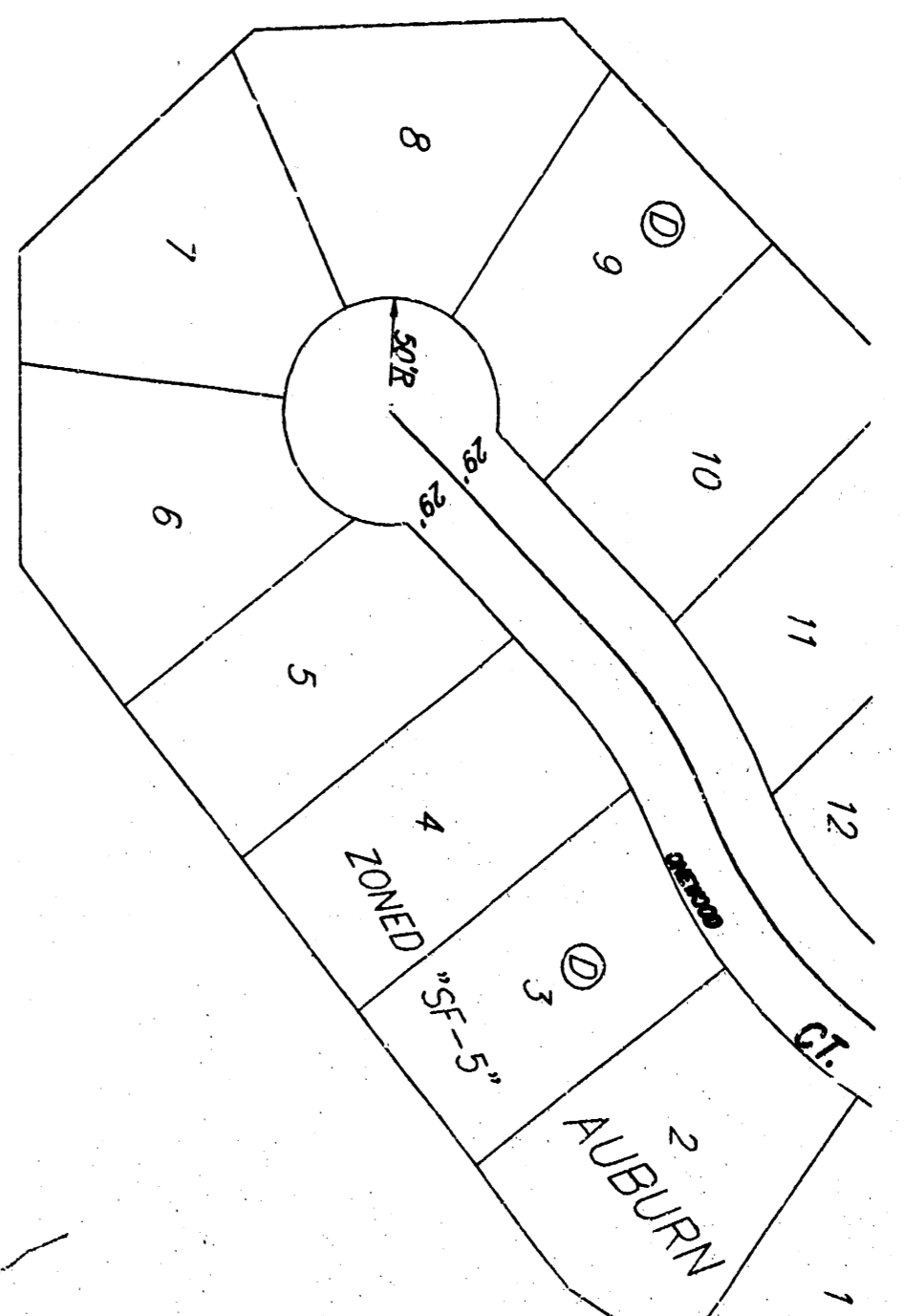
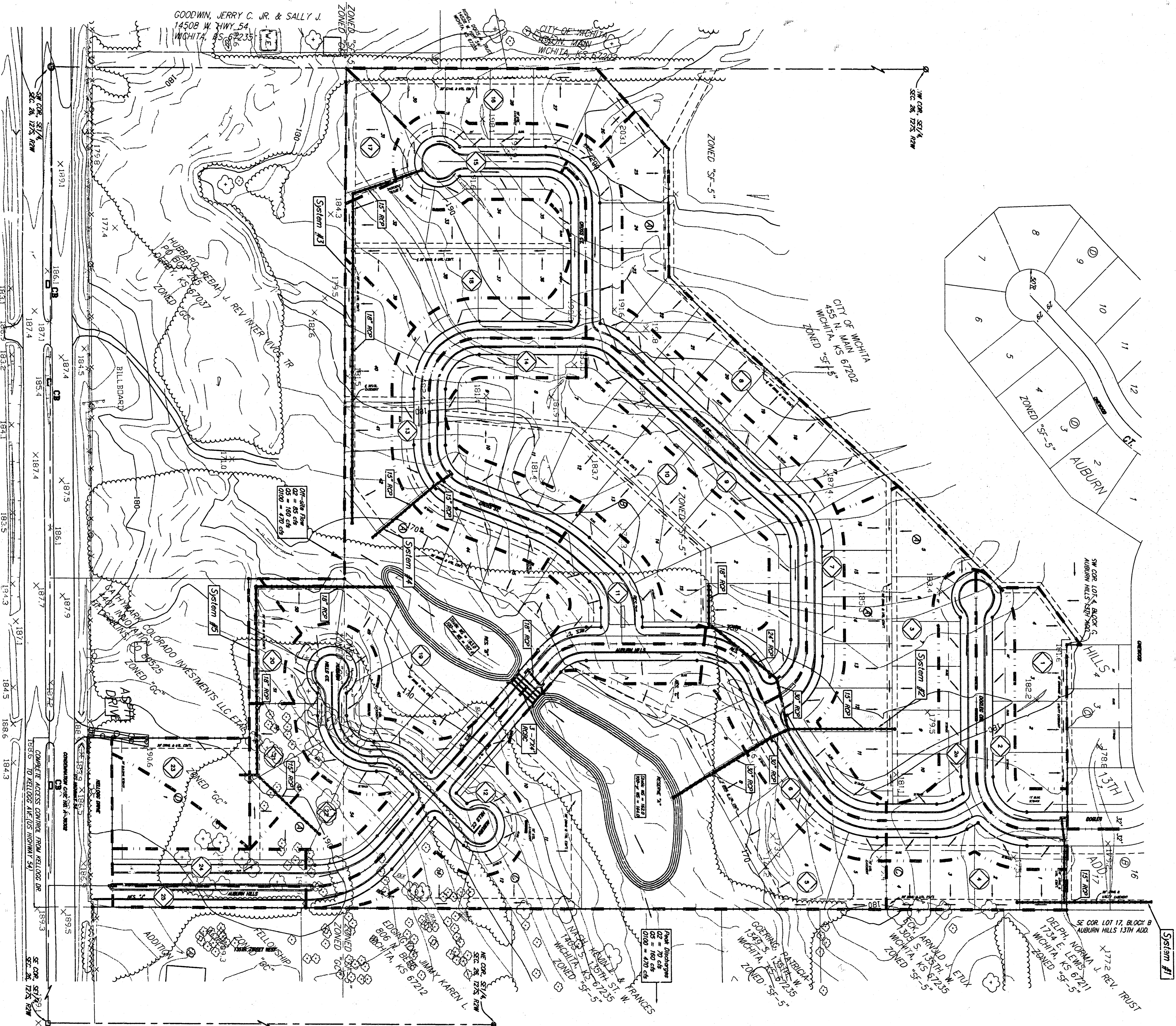
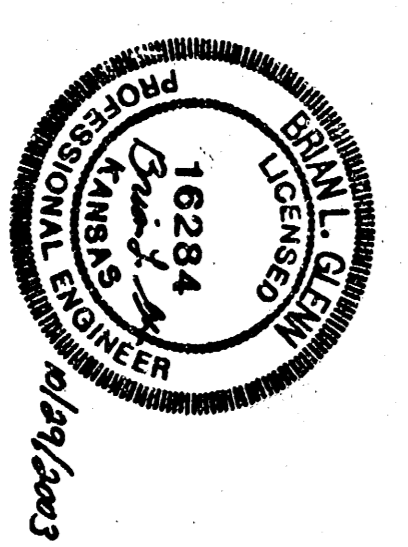


DRAINAGE PLAN AUBURN HILLS 15TH ADDITION WICHITA, SEDGWICK COUNTY, KANSAS

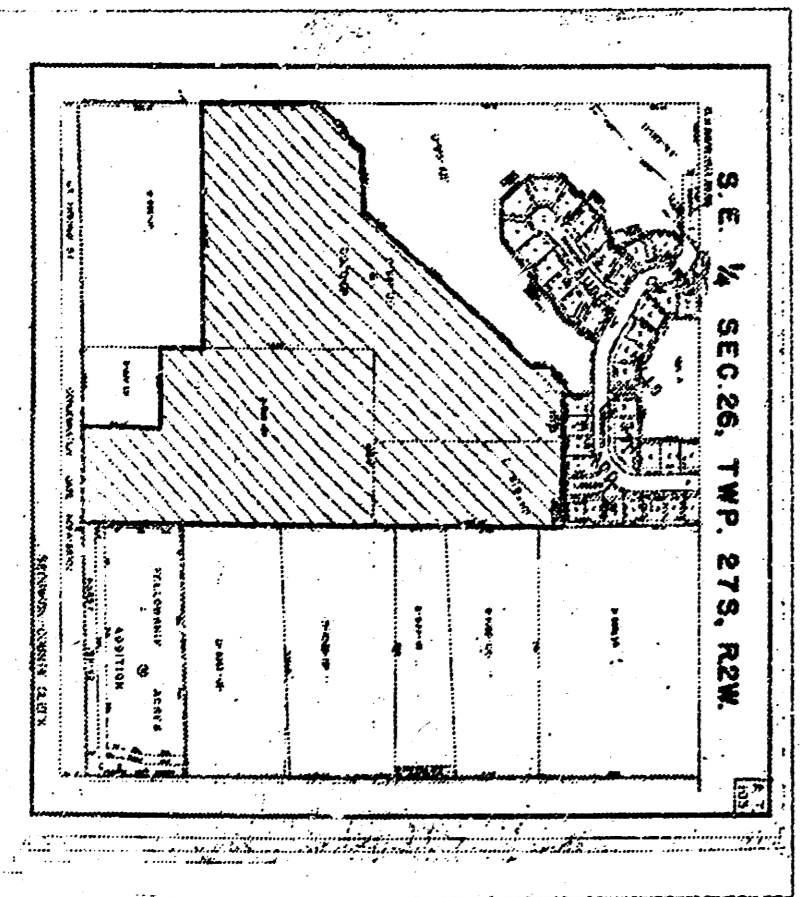
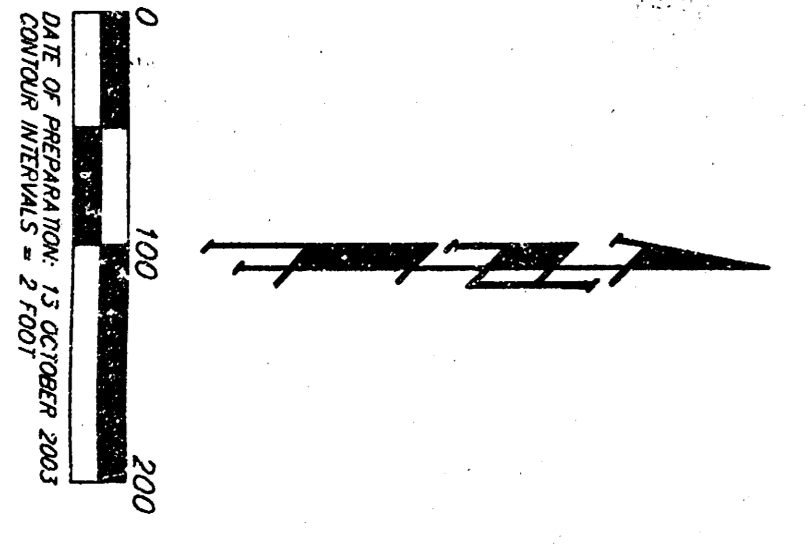


Basin ID	Area	CS	CI00	CS	CI00	CS	CI00	CS	CI00
1	0.9	0.52	0.54	0.07	1.3	2.2	4.4		
2	1.2	0.52	0.54	0.07	2.4	3.0	5.9		
2a	1.4	0.52	0.54	0.07	2.5	3.4	6.9		
3	2.7	0.52	0.54	0.07	5.3	6.5	13.3		
4	0.8	0.52	0.54	0.07	1.5	1.6	3.0		
5	1.0	0.52	0.54	0.07	2.0	2.5	4.9		
6	2.8	0.52	0.54	0.07	5.8	6.9	13.9		
7	2.2	0.52	0.54	0.07	4.4	5.4	10.9		
8	1.7	0.52	0.54	0.07	3.4	4.2	8.4		
9	3.3	0.52	0.54	0.07	6.8	8.1	16.3		
10	3.3	0.52	0.54	0.07	6.8	8.1	16.3		
11	3.3	0.52	0.54	0.07	6.8	8.1	16.3		
12	1.9	0.52	0.54	0.07	3.8	4.7	9.4		
13	1.9	0.52	0.54	0.07	3.8	4.7	9.4		
14	1.9	0.52	0.54	0.07	3.8	4.7	9.4		
15	1.2	0.52	0.54	0.07	2.4	3.0	5.9		
16	1.2	0.52	0.54	0.07	2.4	3.0	5.9		
17	0.5	0.52	0.54	0.07	1.0	1.2	2.5		
18	2.0	0.52	0.54	0.07	4.0	4.9	9.9		
19	4.5	0.52	0.54	0.07	9.0	11.1	22.2		
20	0.4	0.52	0.54	0.07	0.8	1.0	2.0		
21	0.4	0.52	0.54	0.07	0.8	1.0	2.0		
22	1.4	0.52	0.54	0.07	2.8	3.4	6.9		
23	0.7	0.52	0.54	0.07	1.4	1.7	3.5		
24	0.7	0.52	0.54	0.07	1.4	1.7	3.5		
25	0.4	0.52	0.54	0.07	0.8	1.0	2.0		



BRAND MARKS:
 CITY OF WICHITA, KANSAS
 CITY ENGINEER, WICHITA, KS
 7-27-5 P.O. BOX 24
 WICHITA, KS 67201
 ELEV. = 1560.0 FT. DRAIN
 1561.0 FT. FIN.

MANHOLE BUILDING 300' ELEVATIONS FOR	LOT	BLOCK	GRID DATA
MANHOLE ELEVATION	42-50	A	1720
MANHOLE ELEVATION	6-2	C	1720



BAUGHMAN COMPANY P. A.
 ENGINEERING, SURVEYING & PLANNING
 3101 W. 22nd St., Suite 200, Wichita, Kansas 67211
 Phone: 99-677099, 2003
 Fax: 99-677099, 2003
 Revised: 12 OCTOBER 2003

BENCHMARKS:
 City Disc In T.C. Adj to F.H. 38'
 South of intersection of Onewood
 and Auburn Hills.
 Elev. = 178.48 (City Datum)

"□" cut in south curb of Onewood
 272' west of C.L. Auburn Hills.
 Elev. = 179.73 (City Datum)

NOTES:

A master grading plan for drainage has been developed for the subdivision and is on file with the City of Wichita, Kansas. Construction of residential structures must follow the master site grading plan elevations which are higher than the minimum pad requirement.

All drainage easements, rights-of-way, or reserves shall remain at established grades or as modified with the approval of the City Engineer of the City of Wichita, Kansas. No obstructions which impede the flow of this drainage system shall be allowed.

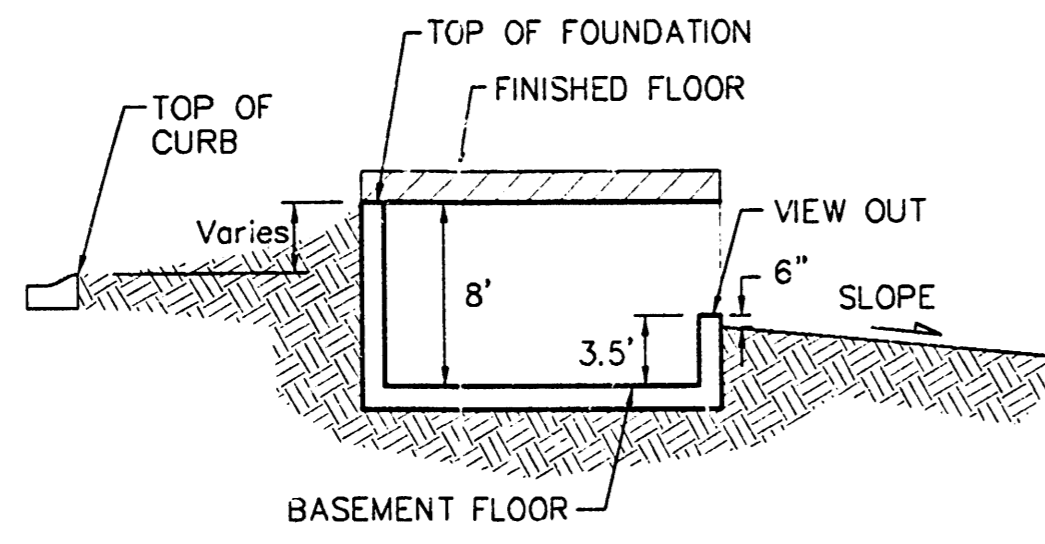
Proposed top of foundation elevations are shown on plans. Contractor to set finished floor elevations.

All street elevations shown on plans are for top of curb (full-height). Typically roll-type curbs are constructed. Deduct 0.25' from top of curb (full-height).

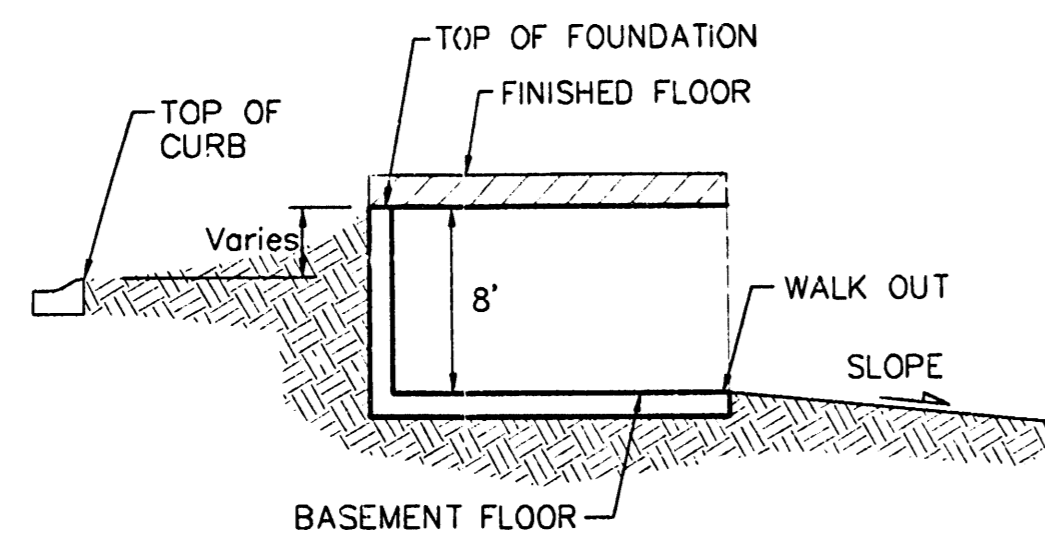
This Grading Plan is designed with View-Out and Walk-Out Basements. Elevations shown at Rear of House (XX.X V.O. and XX.X W.O.) are for minimum opening.

All elevations shown on plans are City of Wichita Datum.

* Extra-deep foundation shall be required for Lots 8-9, Block D.

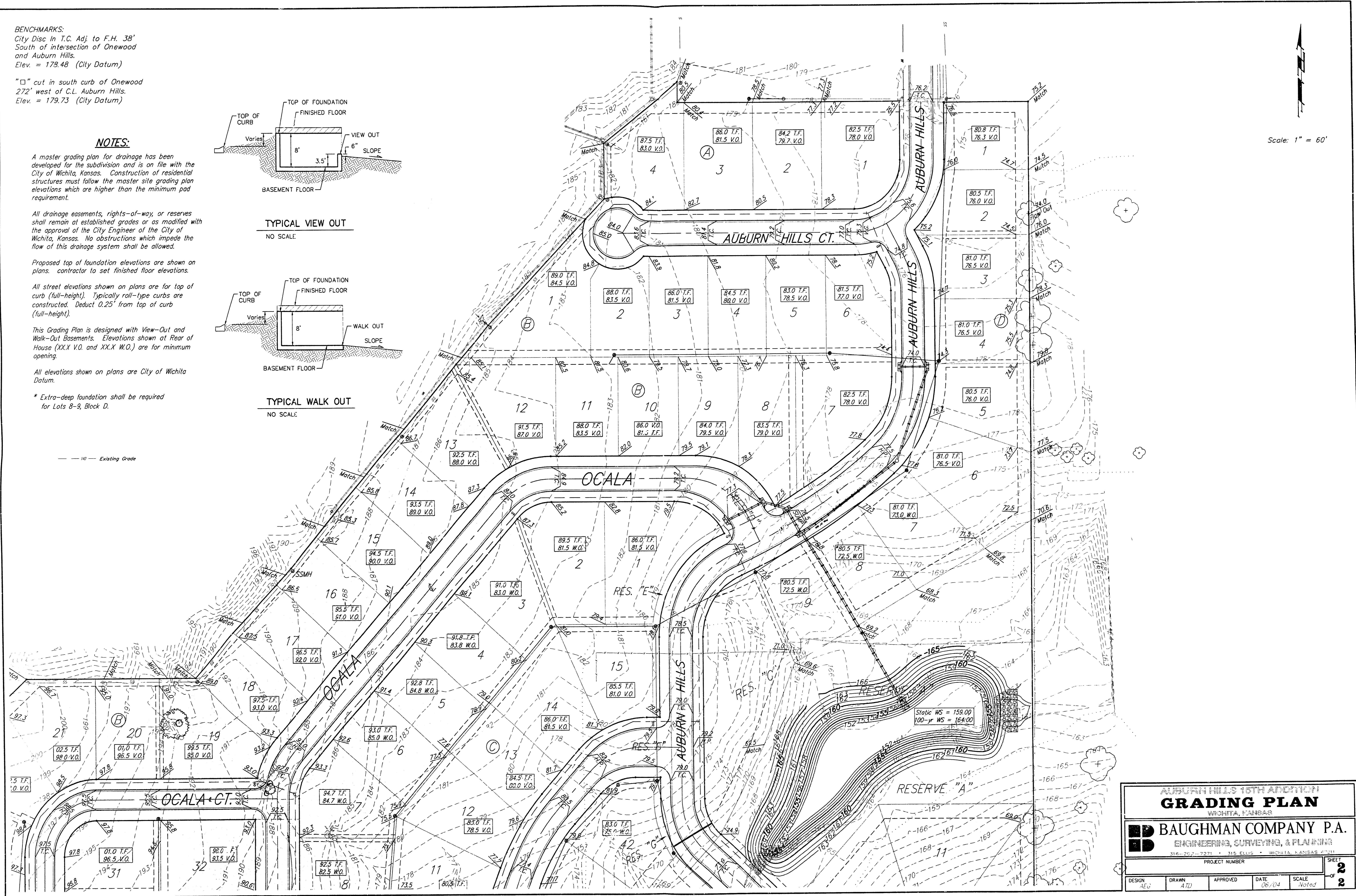


TYPICAL VIEW OUT
NO SCALE



TYPICAL WALK OUT
NO SCALE

Scale: 1" = 60'



AUBURN HILLS 15TH ADDITION
GRADING PLAN
 WICHITA, KANSAS

BAUGHMAN COMPANY P.A.
 ENGINEERING, SURVEYING, & PLANNING
 214-267-2224 • 115 ELLIS • WICHITA, KANSAS 67201

DESIGN	DRAWN	APPROVED	DATE
LEG	ATD		06/04
PROJECT NUMBER			SCALE
			Noted
SHEET			2
OF			2