
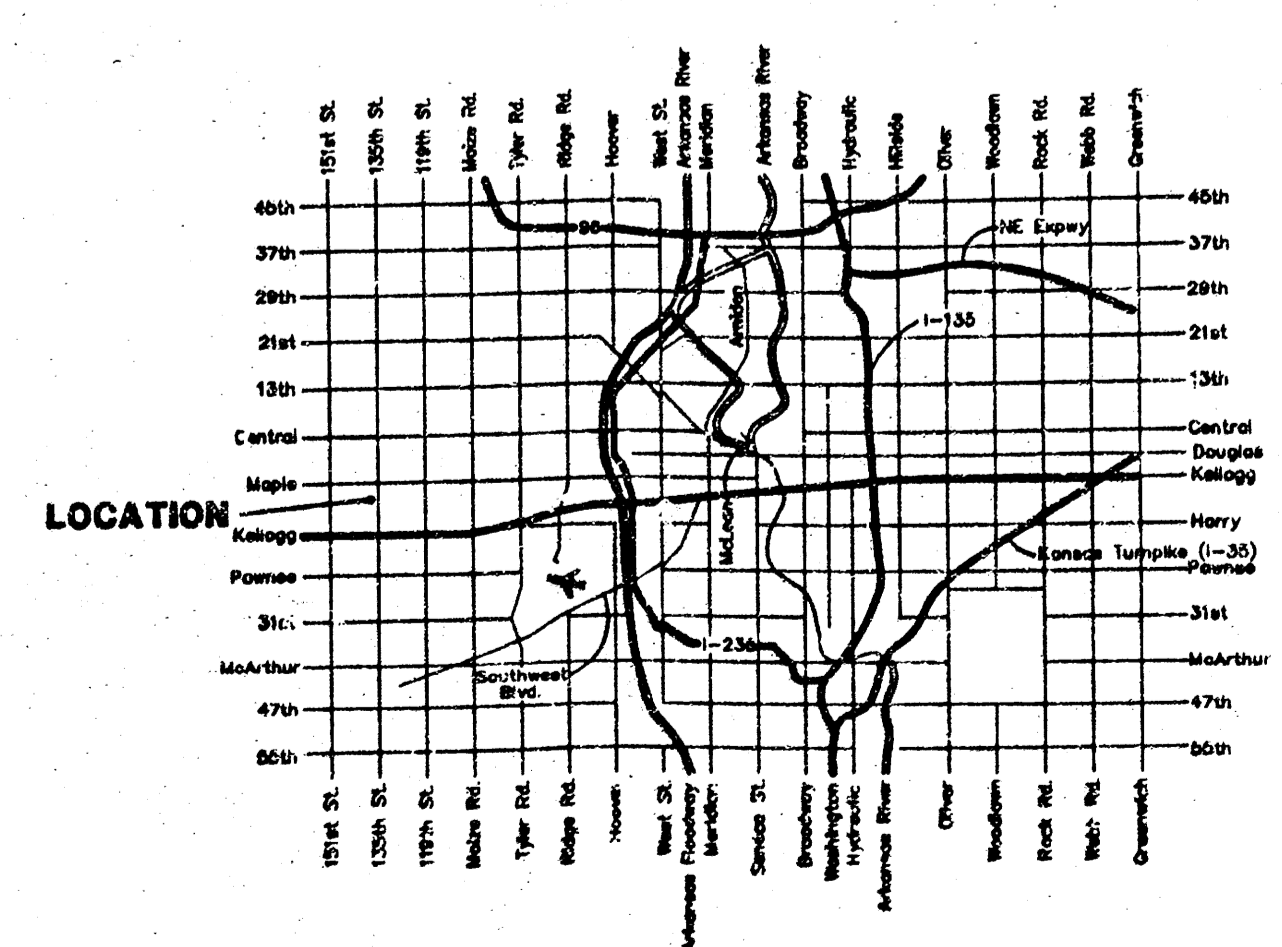
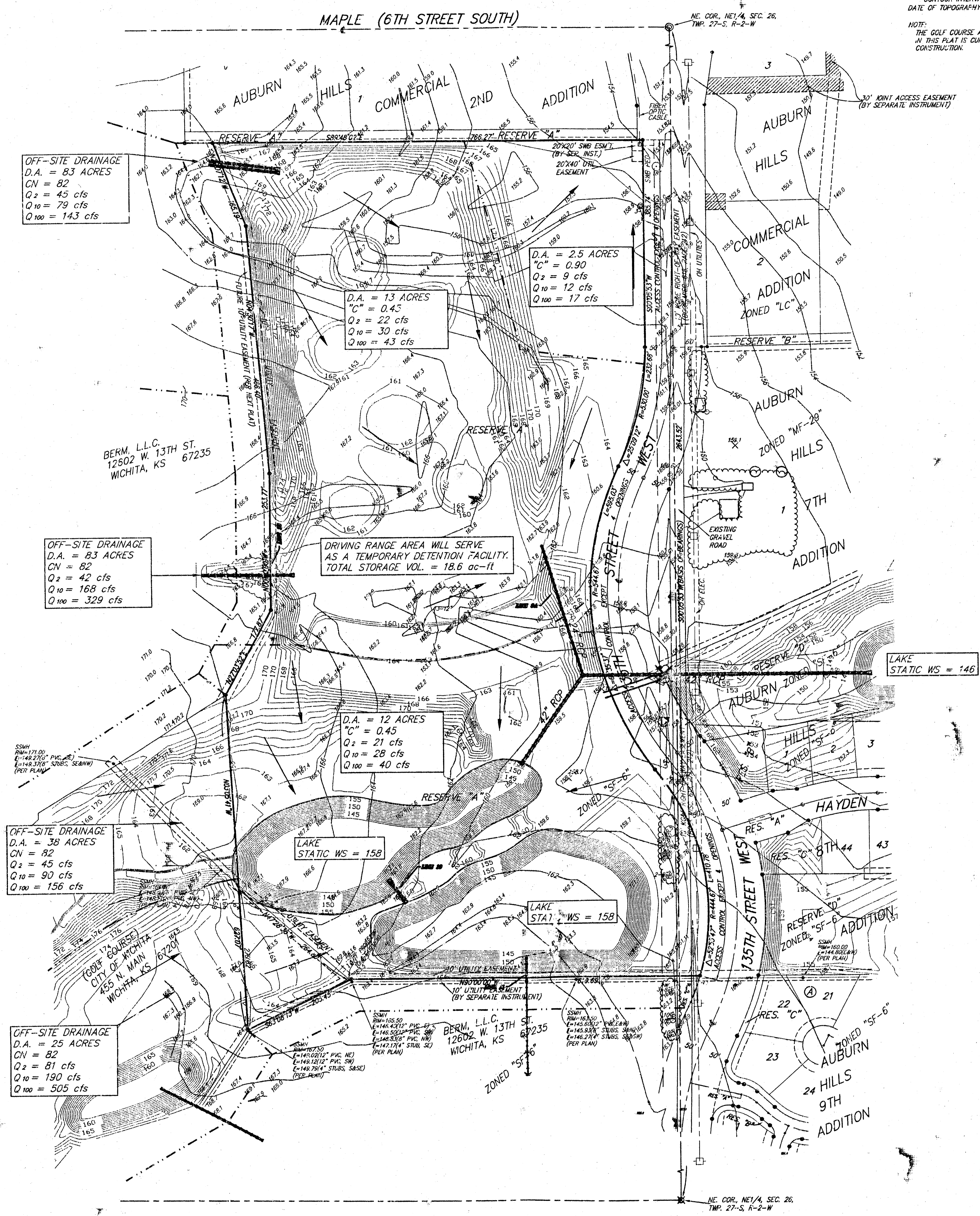


# DRAINAGE PLAN

## AUBURN HILLS CLUBHOUSE ADDITION

### WICHITA, SEDGWICK COUNTY, KANSAS

  
 0 100 200  
 CONTOUR INTERVAL = 2 FT.  
 DATE OF TOPOGRAPHY = 6-12-1987  
 NOTE:  
 THE GOLF COURSE AREA CONTAINED  
 IN THIS PLAN IS CURRENTLY UNDER  
 CONSTRUCTION.



Pond Design and Grading by  
DYE DESIGNS INTERNATIONAL  
550 East Yale Avenue  
Denver, CO 80222

Additional Grading by  
Randall Steiner

NOTE: The proposed drainage plan provided herein is a generally defined plan to follow for design. It is recognized and assumed that upon the final design of parking and storm sewer improvements within this plot that the designer will modify or alter the general drainage plan as necessary in order to implement the installation of the improvements to obtain the most economical design and construction possible.

12 118 1989

**BAUGHMAN COMPANY P. A.**  
ENGINEERING, SURVEYING, & PLANNING  
316-222-7721 • 315 ELLIS • WICHITA, KANSAS 67221