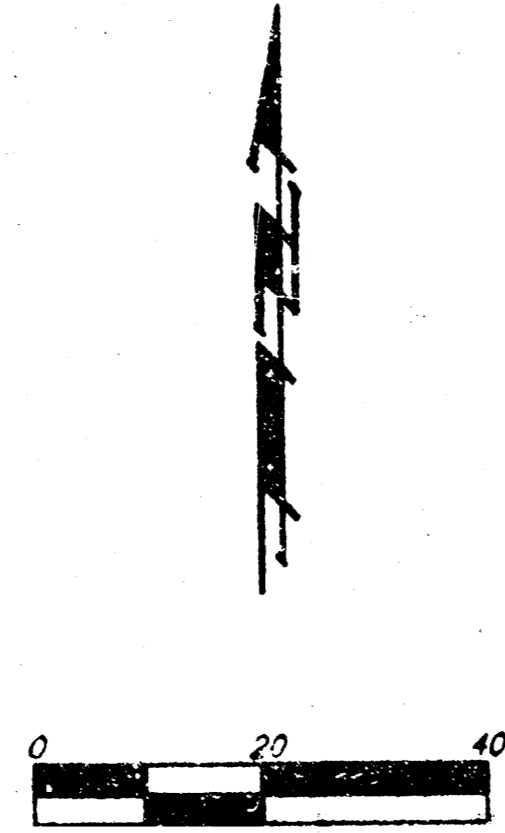


# DRAINAGE PLAN

## AUBURN HILLS POOL HOUSE ADDITION

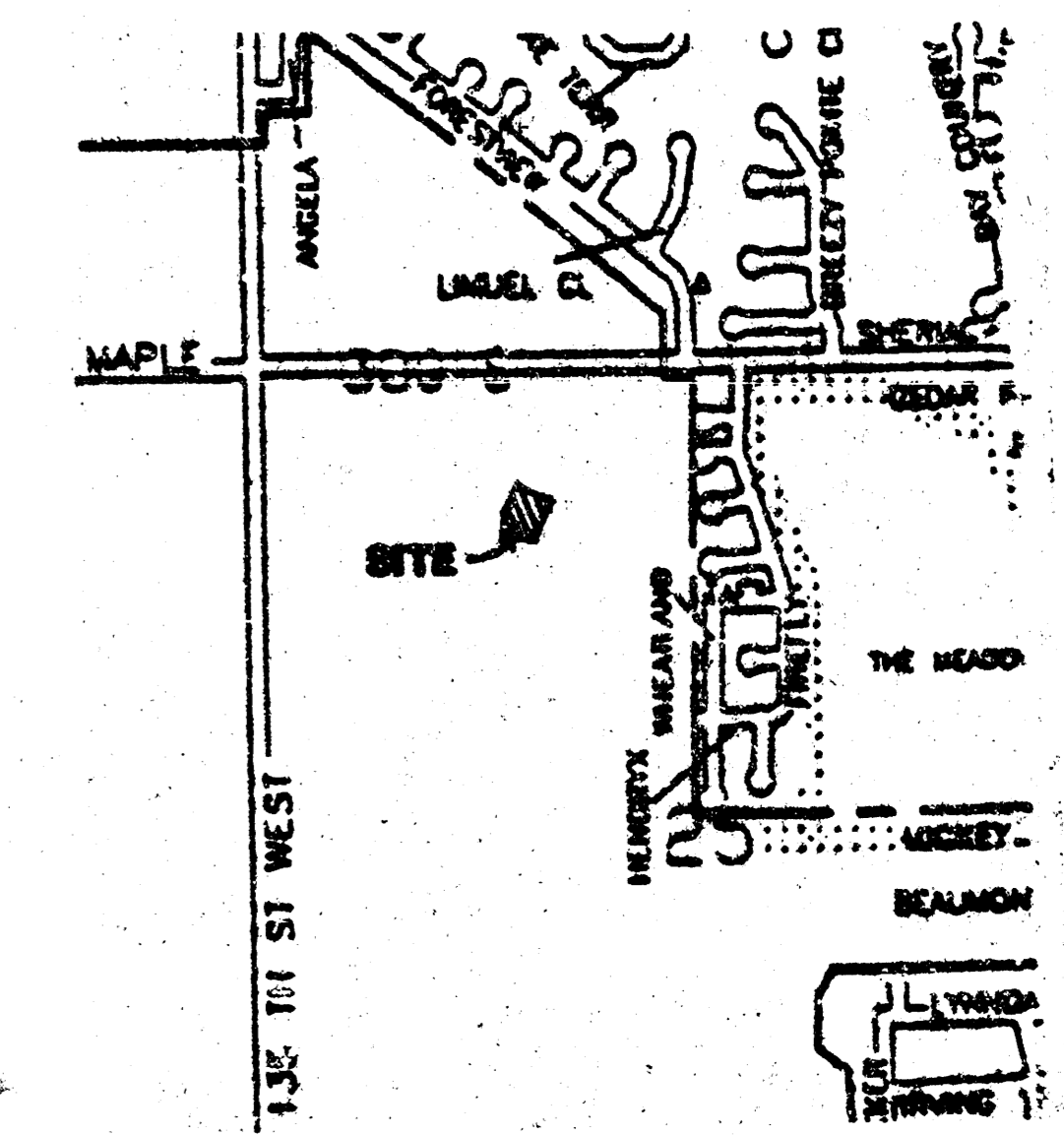
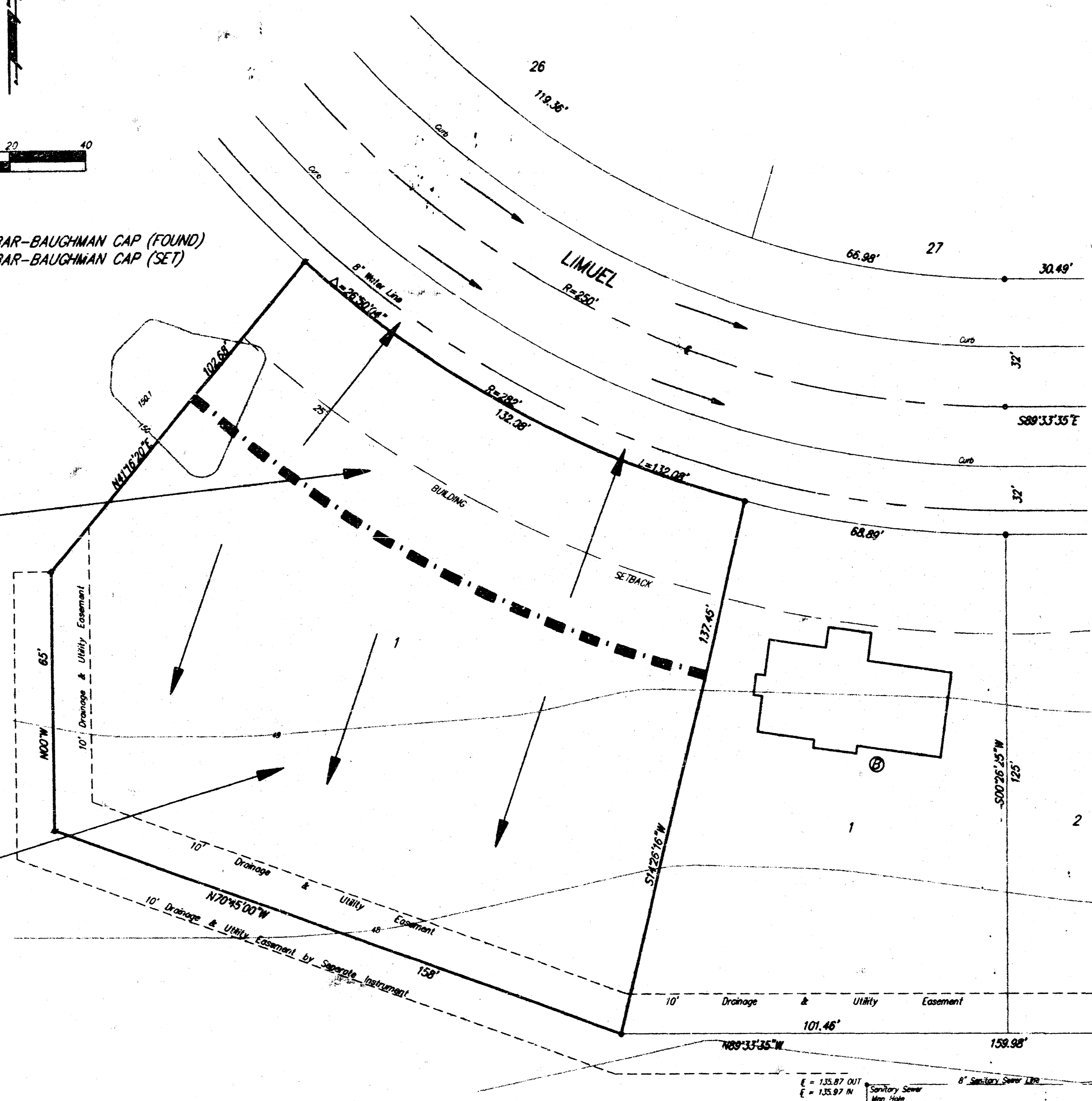
### WICHITA, SEDGWICK COUNTY, KANSAS



- = #4 REBAR-BAUGHMAN CAP (FOUND)
- = #4 REBAR-BAUGHMAN CAP (SET)

DRAINAGE AREA = 0.15 Ac.  
 $C = 0.6$   
 $Q_p = 0.4$  cfs  
 $Q_{100} = 0.7$  cfs

DRAINAGE AREA = 0.38 Ac.  
 $C = 0.6$   
 $Q_p = 0.9$  cfs  
 $Q_{100} = 1.7$  cfs



VICINITY MAP

MINIMUM BUILDING PAD ELEVATIONS FOR LOWEST OPENING TO STRUCTURES

LOT	ELEVATION	
	CITY DATUM	M.S.L.
1	147.00	1334.40