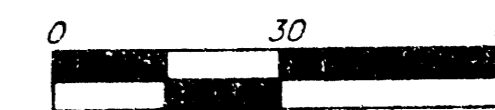
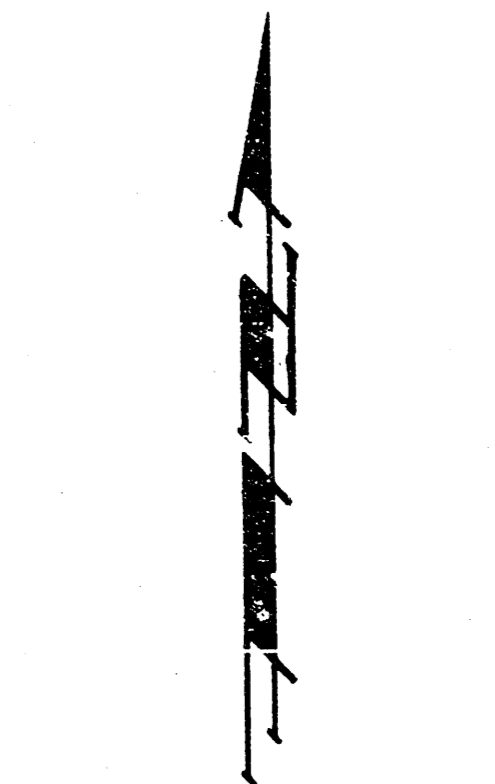
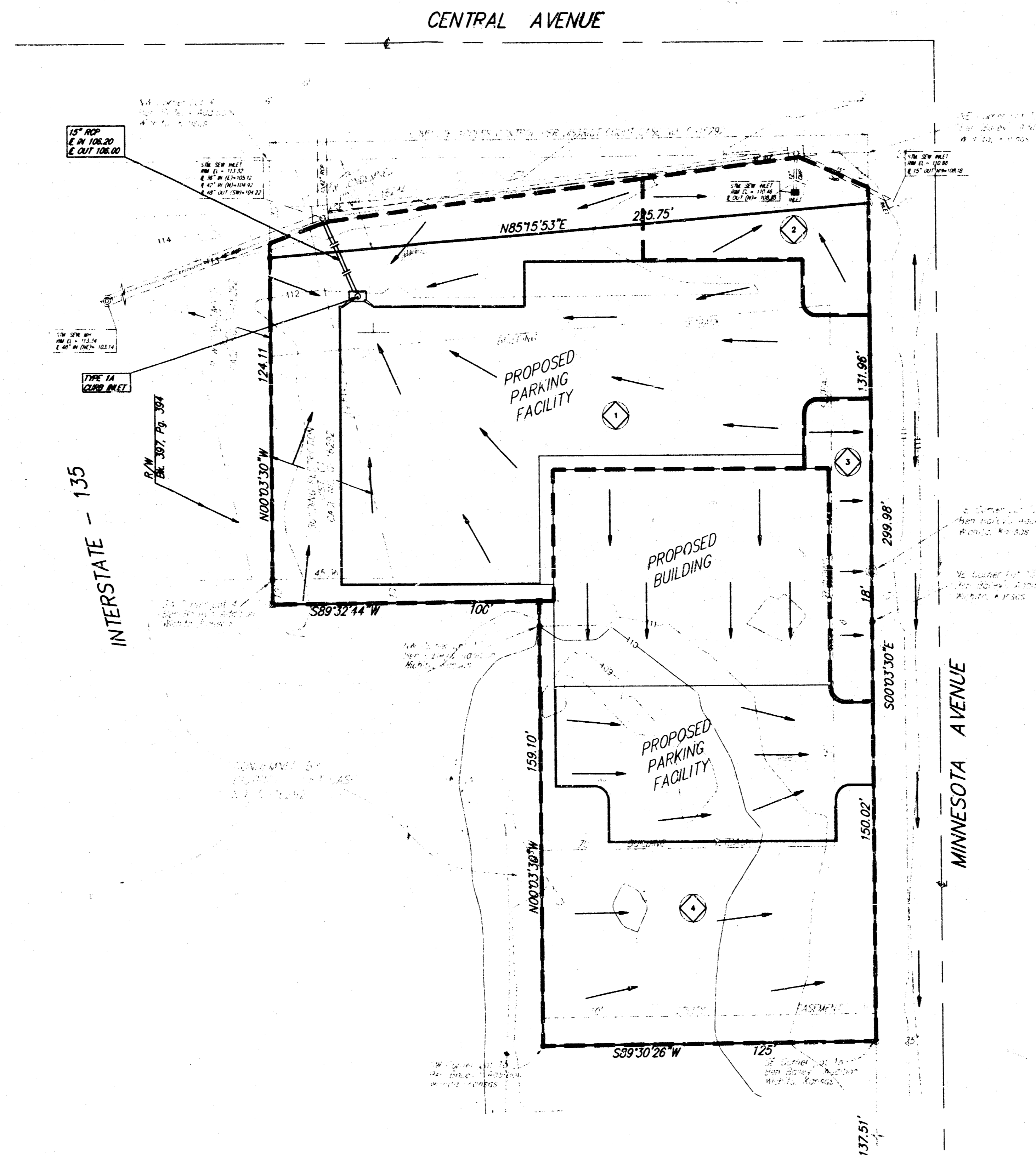


# DRAINAGE PLAN

## AUTOZONE 2ND ADDITION

### WICHITA, SEDGWICK COUNTY, KANSAS



**BENCHMARK**  
 □ CUT TOP OF CURB AT E. END OF MEDIAN  
 AT INTERSECTION OF CENTRAL & MINNESOTA  
 ELEV. = 112.63 CITY DATUM

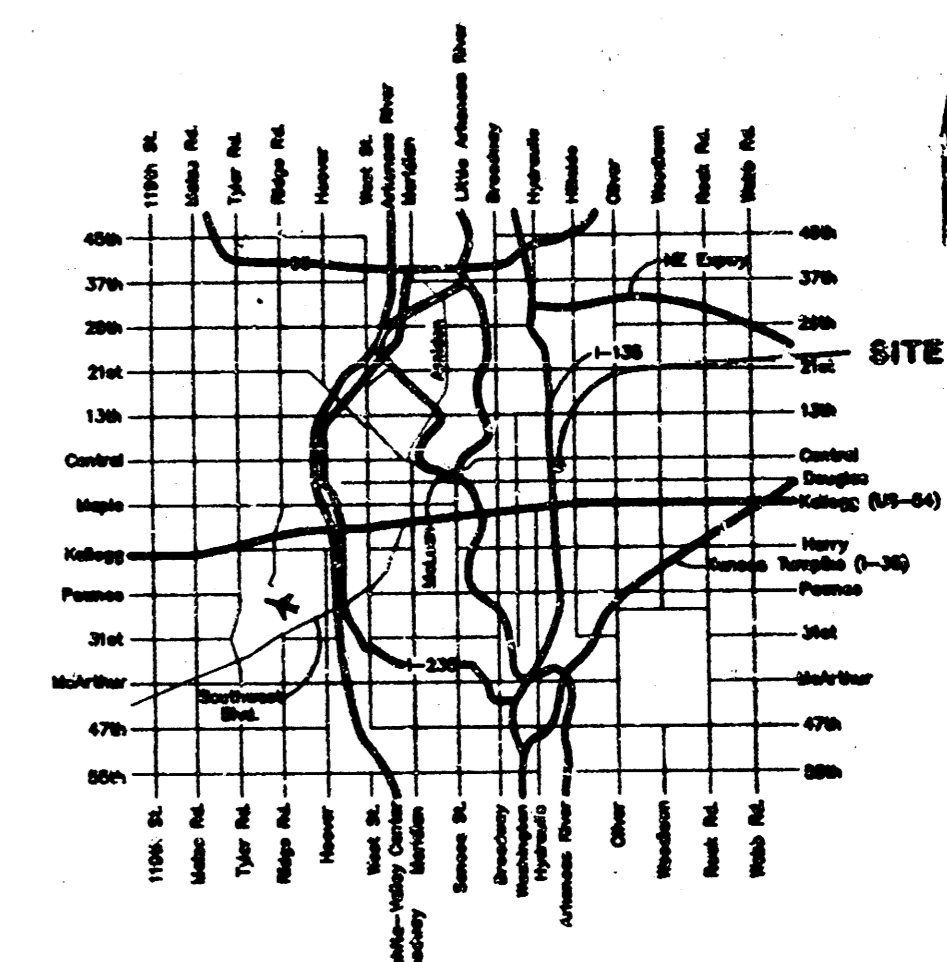
LOT	ELEVATION	
	CITY DATUM	MSL
1	111.1	1298.5

Drainage Area	Area (acres)	C <sub>s</sub>	C <sub>100</sub>	T <sub>c</sub> (min.)	I <sub>100</sub> (in/hr)	I <sub>100</sub> (in/hr)	Q <sub>100</sub> (cfs)	Q <sub>100</sub> (cfs)
1	0.56	0.75	0.82	15	3.83	7.37	1.6	3.4
2	0.10	0.52	0.68	15	3.83	7.37	0.2	0.5
3	0.05	0.52	0.68	15	3.83	7.37	0.1	0.3
4	0.56	0.70	0.81	15	3.83	7.37	1.5	3.3

The "Drainage Plan" being submitted herein is intended to serve as a guide for the design of storm water improvements. Modifications to structures, pipes, etc. may be necessary during the final design to obtain the most economical design and construction possible.

The property located on the Southwest corner of the intersection of Central Avenue and Minnesota, is to be developed as an Autozone retail auto parts store.

Peak flow runoff analysis for this site was determined by the "rational method" using an area weighted "C" value. The weighted coefficient was calculated by the sum of the C.O.W. recommended land use "C" values multiplied by the percentage of the drainage basin for the specified use.



VICINITY MAP

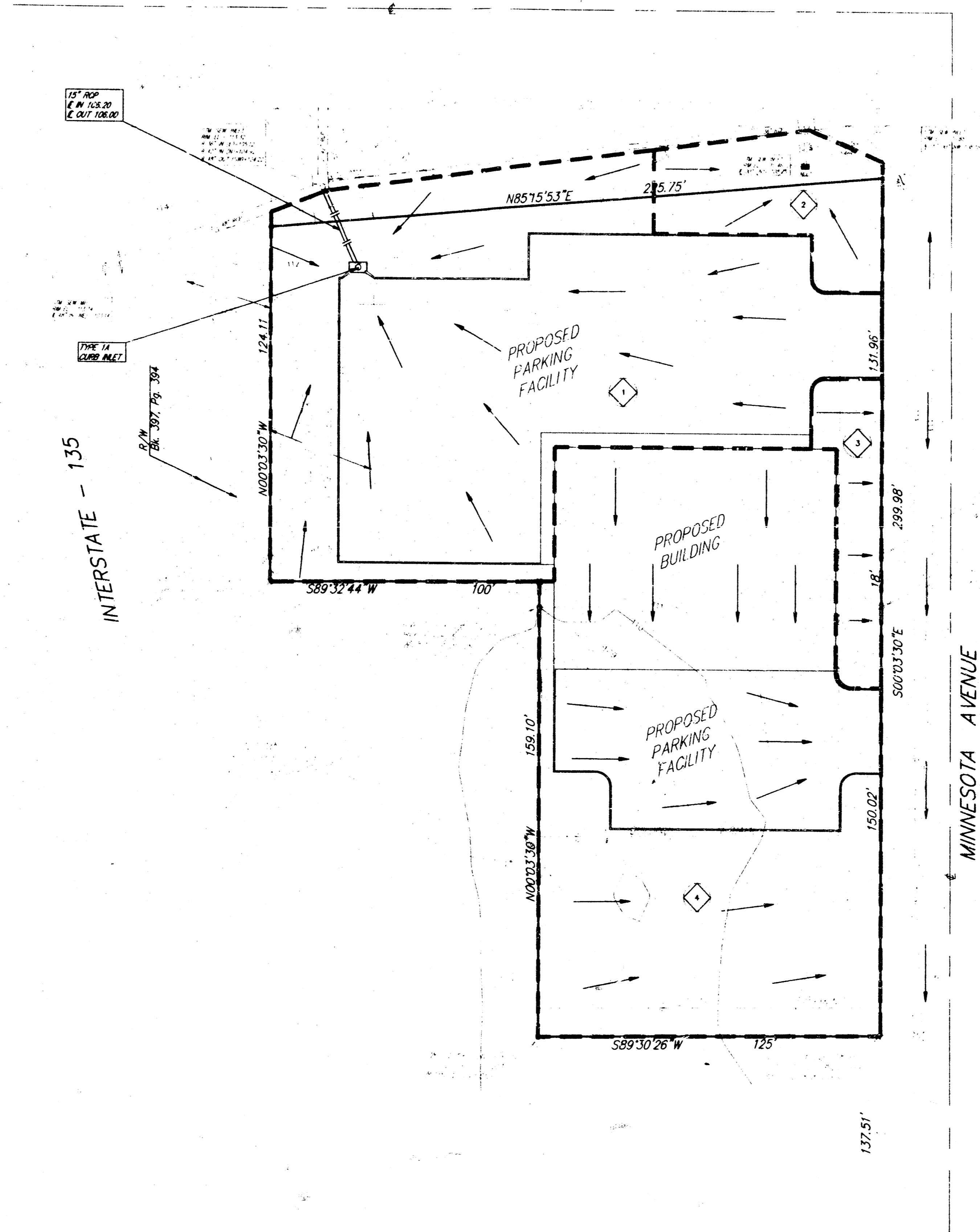
**BAUGHMAN COMPANY P. A.**  
 ENGINEERING, SURVEYING, & PLANNING  
 316-262-7271 • 315 ELLIS • WICHITA, KANSAS 67211

# DRAINAGE PLAN

## AUTOZONE 2ND ADDITION

### WICHITA, SEDGWICK COUNTY, KANSAS

CENTRAL AVENUE



Drainage Area	Area (acres)	C <sub>s</sub>	C <sub>100</sub>	T <sub>c</sub> (min.)	I <sub>2</sub> (in/hr)	I <sub>100</sub> (in/hr)	Q <sub>2</sub> (cfs)	Q <sub>100</sub> (cfs)
1	0.56	0.75	0.82	15	3.83	7.37	1.6	3.4
2	0.10	0.52	0.68	15	3.83	7.37	0.2	0.5
3	0.05	0.52	0.68	15	3.83	7.37	0.1	0.3
4	0.56	0.70	0.81	15	3.83	7.37	1.5	3.3

The "Drainage Plan" being submitted herein is intended to serve as a guide for the design of storm water improvements. Modifications to structures, pipes, etc. may be necessary during the final design to obtain the most economical design and construction possible.

The property located on the Southwest corner of the intersection of Central Avenue and Minnesota, is to be developed as an Autozone retail auto parts store.

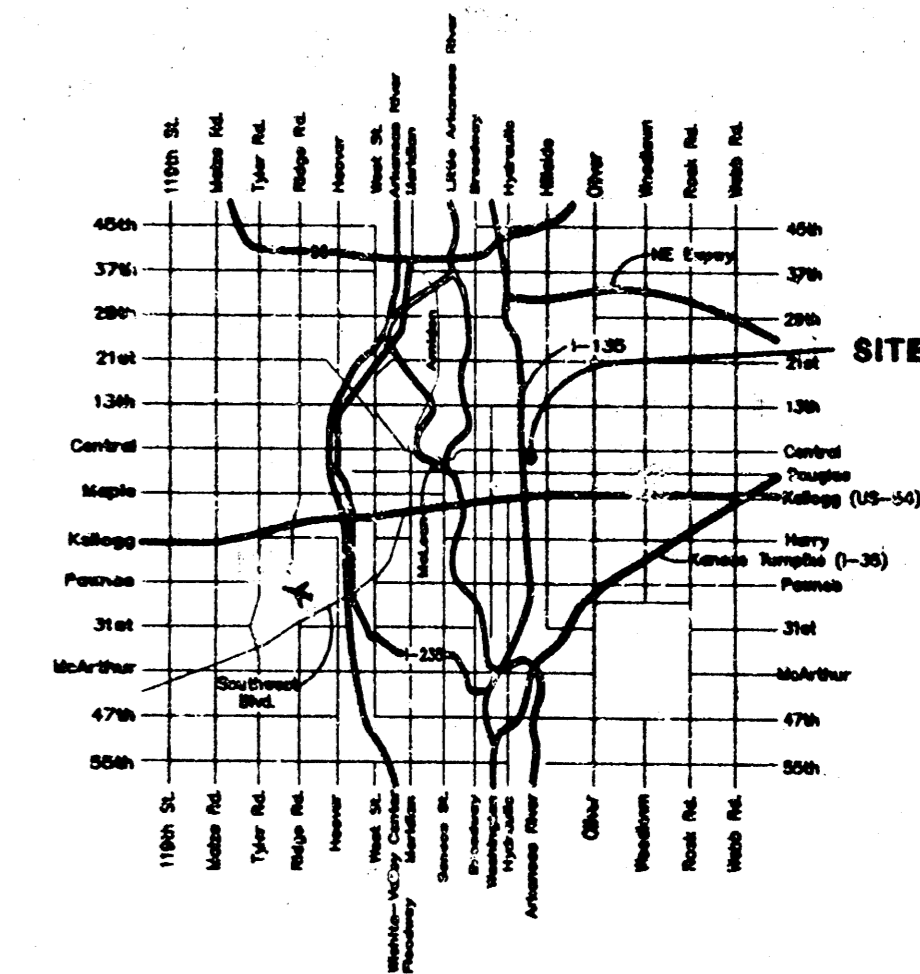
Peak flow runoff analysis for this site was determined by the "rational method" using an area weighted "C" value. The weighted coefficient was calculated by the sum of the C.O.M. recommended land use "C" values multiplied by the percentage of the drainage basin for the specified use.



**BENCHMARK**  
 □ CUT TOP OF CURB AT E. END OF MEDIAN AT INTERSECTION OF CENTRAL & MINNESOTA  
 ELEV. = 112.03 CITY DATUM

MINIMUM BUILDING PAD ELEVATION FOR LOWEST OPENING TO THE STRUCTURES

LOT	ELEVATION	
	CITY DATUM	MSL
1	111.1	1285



VICINITY MAP

**BAUGHMAN COMPANY P.A.**  
 ENGINEERING, SURVEYING, & PLANNING  
 1100 W. 26th Street • Wichita, Kansas 67211