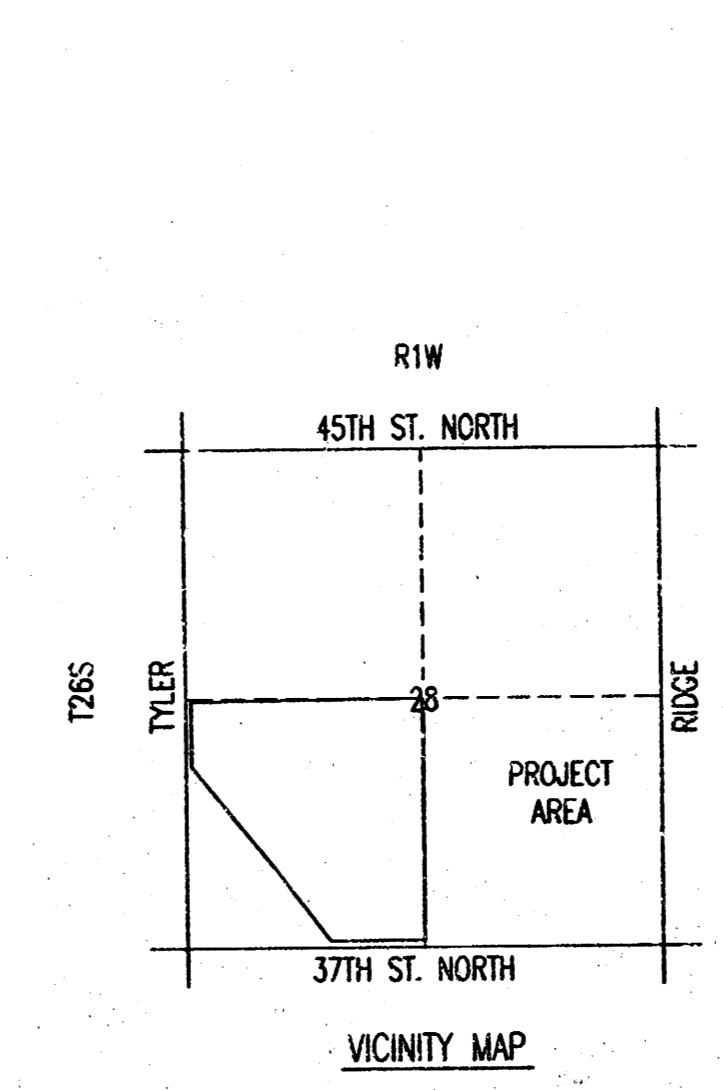


**DRAINAGE PLAN FOR  
AVALON PARK  
AN ADDITION TO WICHITA  
SEDGWICK COUNTY, KANSAS**

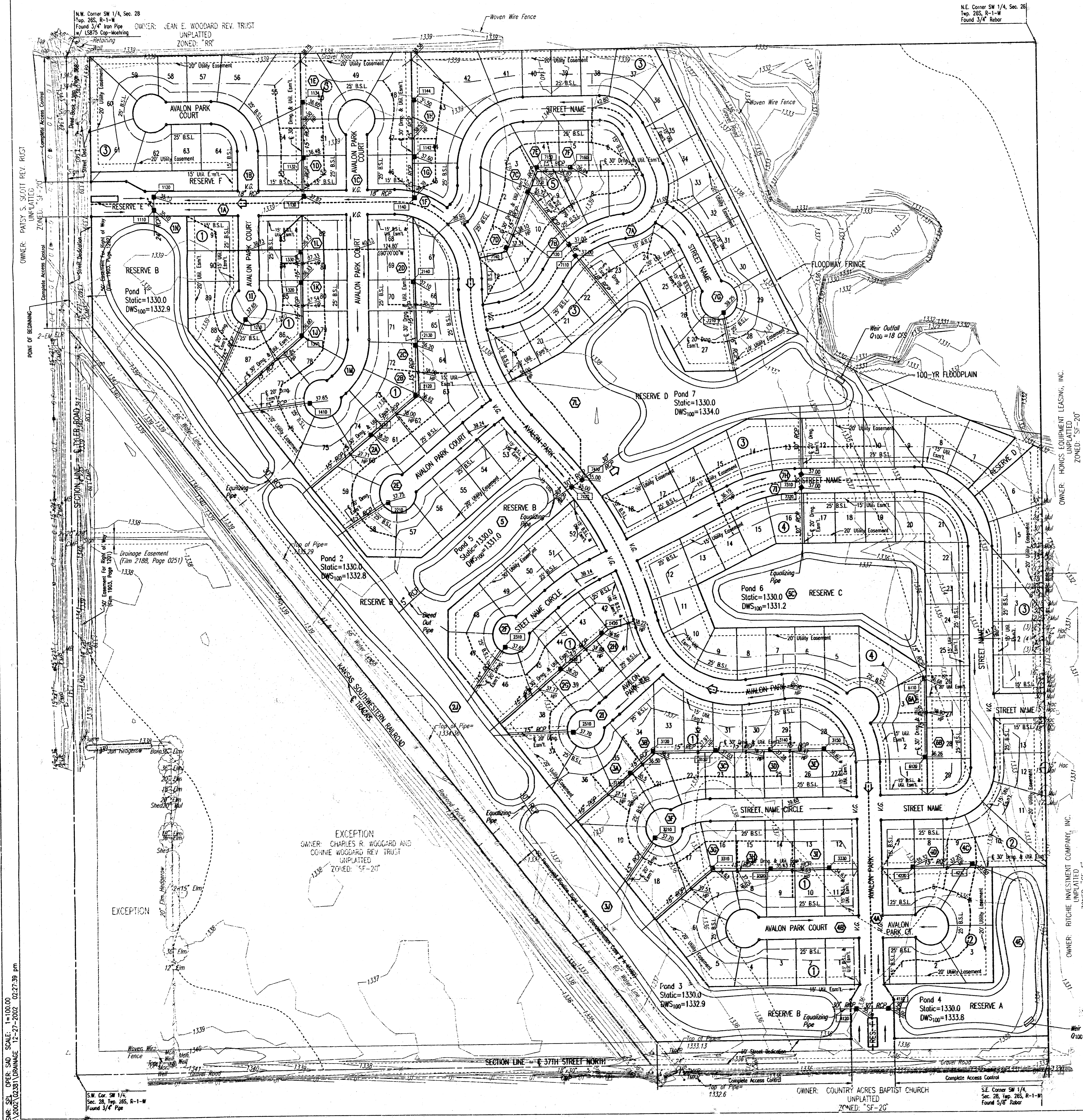
SCALE: 1" = 100'  
ADD 1300 TO SPOT ELEVATIONS FOR N.G.V.D. ELEVATION  
• = 3/4" IRON PIPE W/PEE CAP UNLESS OTHERWISE NOTED



- LEGEND**
- SOIL GROUP BOUNDARY
  - Ⓜ BASIN IDENTIFIER
  - MINOR BASIN BOUNDARY
  - MAJOR BASIN BOUNDARY
  - ➡ MAJOR STORM WATER OVERFLOW (O100)
  - ➡ MINOR STORM WATER FLOW (O2)
  - NODE IDENTIFIER
  - STORM SEWER AND INLET
  - PRIVATE STORM SEWER AND INLET (BY OWNER)
  - STORM SEWER AND MANHOLE
  - SPOT ELEVATION
  - ▲ HIGH POINT ELEVATION
  - MATCH EXISTING ELEVATION

- BASIN 1 SHALL BE GRADED TO DRAIN TO PROPOSED POND #1 VIA APPROVED DRAINAGE CONVEYANCE METHODS.
- BASIN 2 SHALL BE GRADED TO DRAIN TO PROPOSED POND #2 VIA APPROVED DRAINAGE CONVEYANCE METHODS.
- BASIN 3 SHALL BE GRADED TO DRAIN TO PROPOSED POND #3 VIA APPROVED DRAINAGE CONVEYANCE METHODS.
- BASIN 4 SHALL BE GRADED TO DRAIN TO PROPOSED POND #4 VIA APPROVED DRAINAGE CONVEYANCE METHODS.
- BASIN 5 SHALL BE GRADED TO DRAIN TO PROPOSED POND #5 VIA APPROVED DRAINAGE CONVEYANCE METHODS.
- BASIN 6 SHALL BE GRADED TO DRAIN TO PROPOSED POND #6 VIA APPROVED DRAINAGE CONVEYANCE METHODS.
- BASIN 7 SHALL BE GRADED TO DRAIN TO PROPOSED POND #7 VIA APPROVED DRAINAGE CONVEYANCE METHODS.

MINIMUM OPENINGS	ELEVATION (N.G.V.D.)	CITY DATUM
<b>BLOCK 1</b>		
LOTS 1-6, 18-19, 36-38, 46-59, 75-77, 87-91	1330.00	150.6
LOTS 8-15, 20-22, 33-35	1330.20	150.8
LOTS 7, 16-17	1330.30	150.9
LOTS 80-85	1330.60	151.2
LOTS 39, 44-45, 60-61, 74	1330.90	151.5
LOTS 40-43, 78-79, 86	1330.90	151.5
LOTS 23, 31-32, 62-65, 71-73	1330.90	151.5
LOTS 66-69	1330.70	151.3
LOTS 24-?	1330.70	151.3
<b>BLOCK 2</b>		
LOTS 1-4, 10-13	1330.00	150.6
LOTS 5-8	1330.20	150.8
<b>BLOCK 3</b>		
LOTS 1-36	1338.00	150.6
LOTS 67-68	1338.00	150.6
LOTS 69-85	1338.20	150.8
LOTS 43-45	1340.00	152.6
LOTS 37-42	1340.50	153.1
LOTS 56-61	1341.00	153.6
<b>BLOCK 4</b>		
LOTS 3-26	1338.00	150.6
LOTS 1-2, 27-29	1338.00	150.6
<b>BLOCK 5</b>		
LOTS 2-4, 9-10	1338.40	151.0
LOTS 5-8	1338.50	151.1
LOTS 1, 11-12	1338.10	151.7



N.W. Corner SW 1/4, Sec. 28  
Top 265, R-1-W  
Found 3/4" Iron Pipe  
w/ 1.5875 Cap-Working  
UNPLATTED  
ZONED: "RR"

OWNER: JEAN E. WOODARD REV. TRUST

OWNER: Patsy S. Scott Rev. Trust

OWNER: CHARLES R. WOODARD AND  
CORINE WOODARD REV. TRUST  
UNPLATTED  
ZONED: "SF-20"

OWNER: COUNTRY ACRES BAPTIST CHURCH  
UNPLATTED  
ZONED: "SF-20"

OWNER: FITCHE INVESTMENT COMPANY, INC.  
UNPLATTED  
ZONED: "SF-5"

OWNER: HONGS EQUIPMENT LEASING, INC.  
UNPLATTED  
ZONED: "SF-20"

SE. Corner SW 1/4, Sec. 28, Top 265, R-1-W  
Found 3/4" Rebar