

# DRAINAGE PLAN BAHA'I ADDITION

## WICHITA, SEDGWICK COUNTY, KANSAS

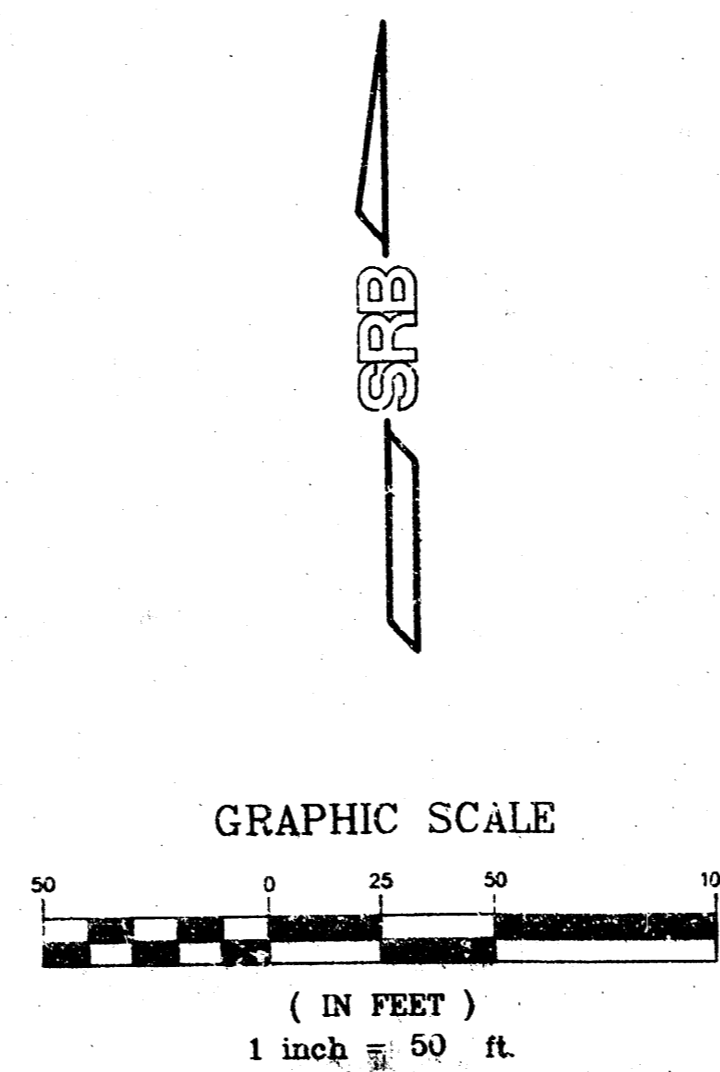
**LEGAL DESCRIPTION:**

That part of the South 2 acres of the North 6 acres of Lot 12, Russell Tracts, Sedgwick County, Kansas, described as follows: Beginning at the S.E. Corner of said North 6 acres of Lot 12; thence West along the south line of said North 6 acres of Lot 12, a distance of 317.475 feet; thence North, 137.23 feet to the North line of the South 2 acres of the North 6 acres of said Lot 12; thence East along said line 317.375 feet to the East line of said Lot 12; thence South along said East line to Point of Beginning, Except the east 40 feet.

The Spiritual Assembly of The BAHA'I of Wichita  
 ATTN: Richard Vore  
 4926 Port West Ct.  
 Wichita, Kansas 67204

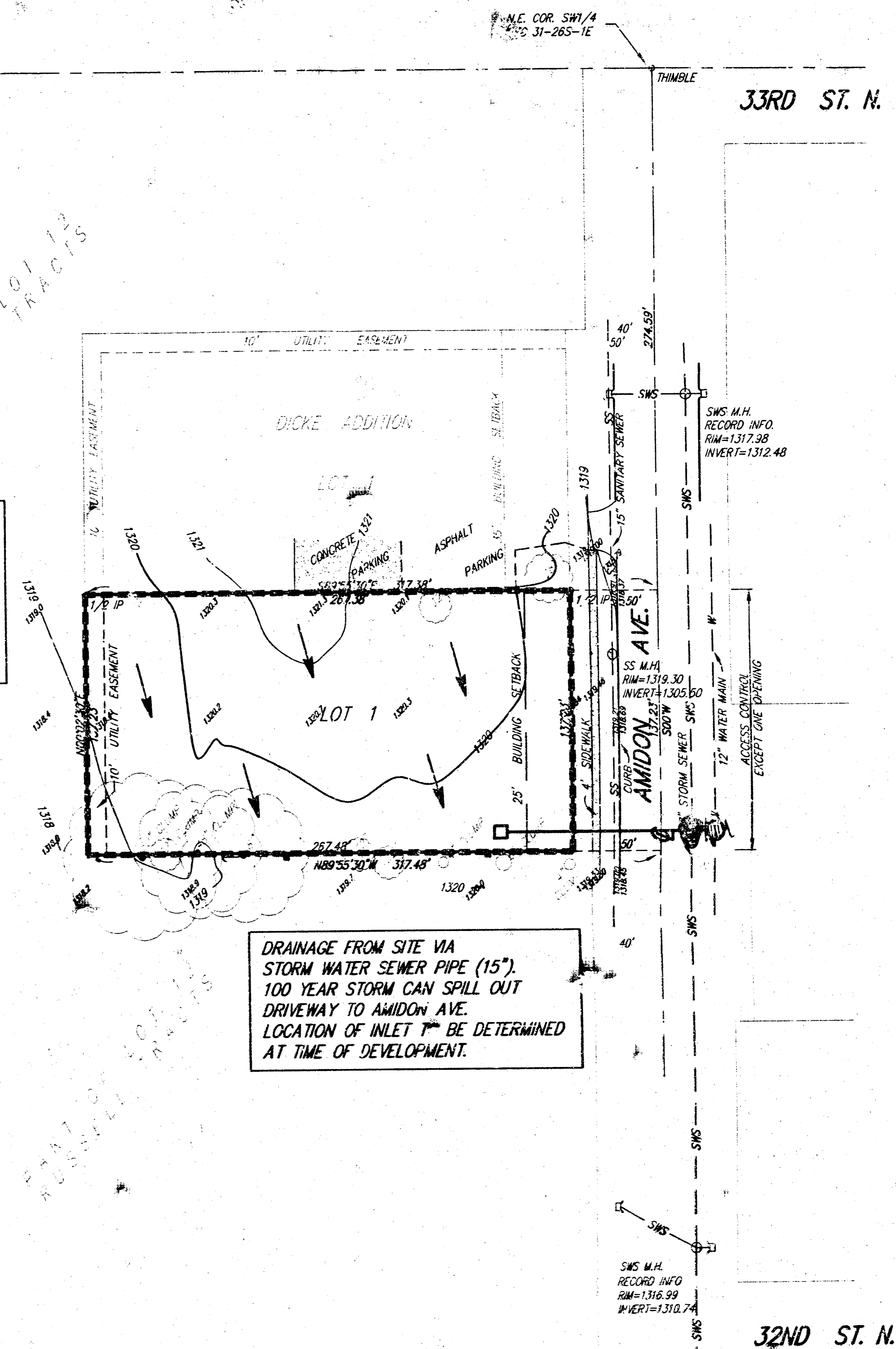
**GROSS SIZE:**  
 38,077.86 Sq. Ft.±  
 0.87 Acres±

**NET SIZE:**  
 36,705.56 Sq. Ft.±  
 0.84 Acres±

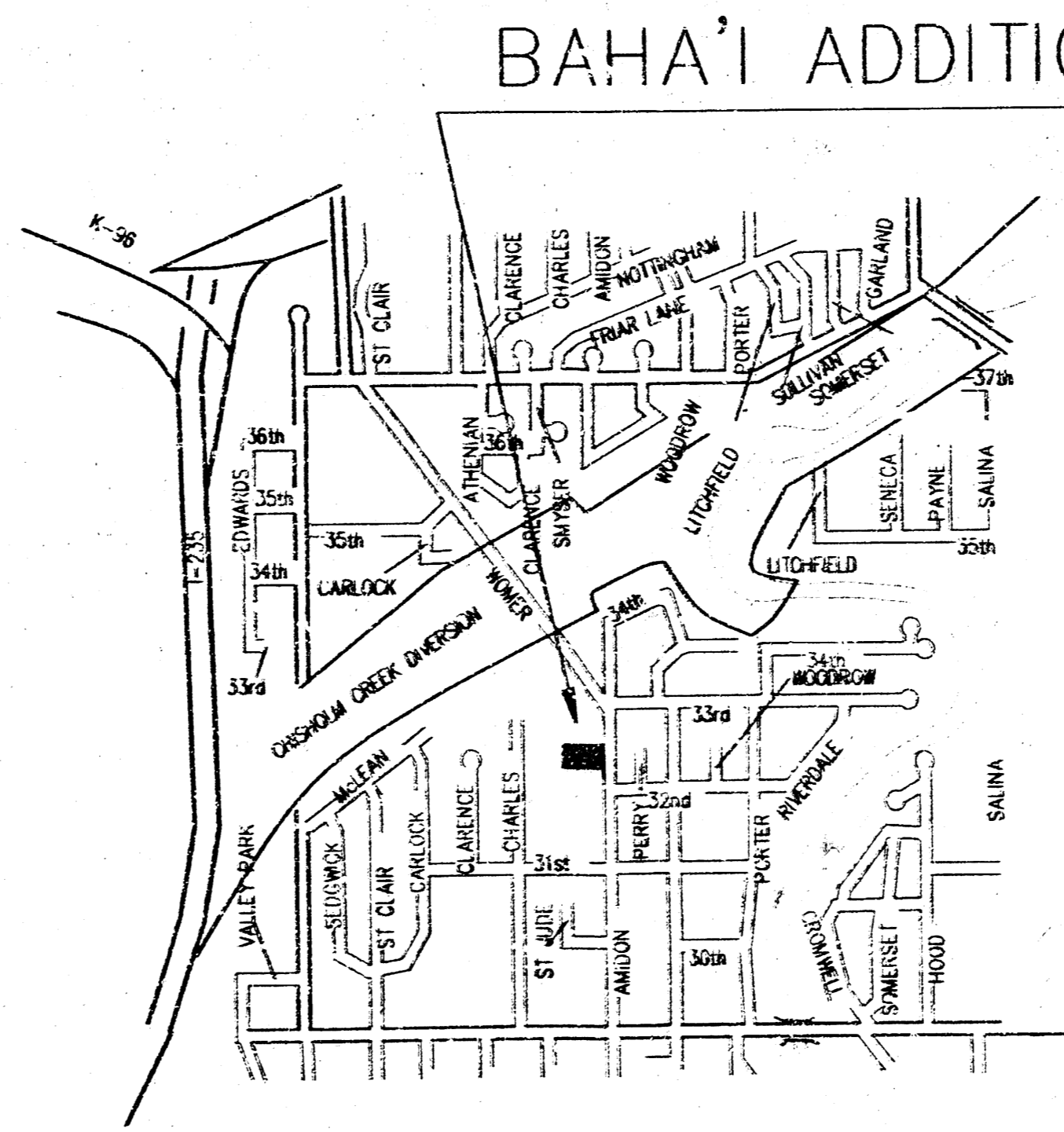


BENCH MARK: CITY OF WICHITA STD DISC  
 42" E. & 34" N. OF CENTER LINE INTERSECTION  
 OF 33RD ST. N. & AMIDON  
 ELEV.=1318.76 (N.G.V.D.)

Area = 0.84 Acres  
 Tc = 15 Minutes  
 Cs = 0.69  
 C100 = 0.69  
 Is = 4.56 in/hr  
 I100 = 7.37 in/hr  
 Q5 = 2.7 cfs  
 Q100 = 5.0 cfs



DRAINAGE FROM SITE VIA  
 STORM WATER SEWER PIPE (15")  
 100 YEAR STORM CAN SPILL OUT  
 DRIVEWAY TO AMIDON AVE.  
 LOCATION OF INLET TO BE DETERMINED  
 AT TIME OF DEVELOPMENT.



VICINITY MAP