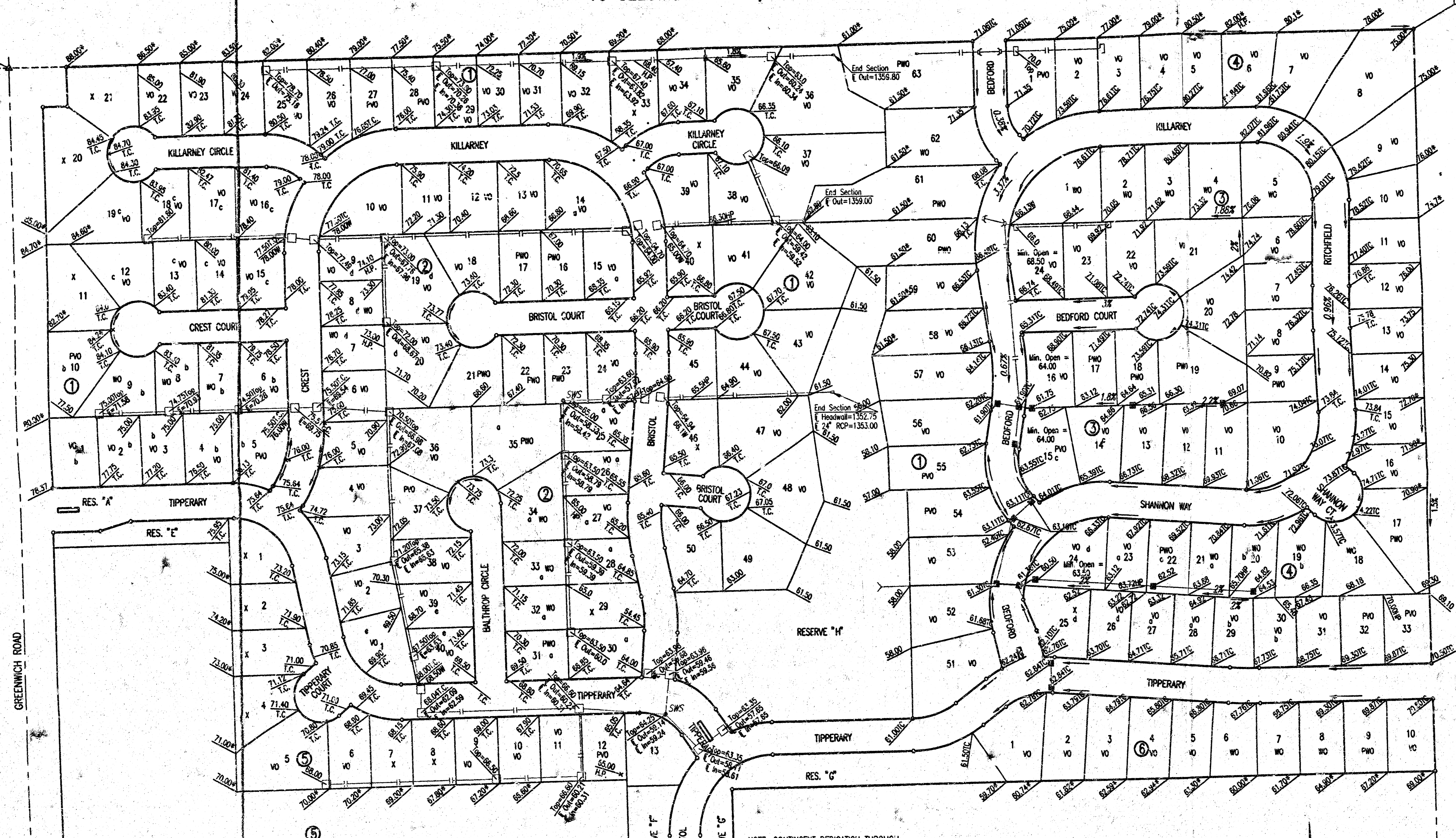


# FOUR CORNER LOT GRADING BALTHROP ADDITION TO SEDGWICK COUNTY, KANSAS

N.W. Corner, S.W. 1/4  
Sec. 15, T27S, R2E  
of the 6th P.M.  
Fd. 3/4" I.P.

N.E. Corner, S.W. 1/4  
Sec. 15, T27S, R2E  
of the 6th P.M.  
Fd. 3/4" I.P.



DSNR: S&D OPER. S&D SCALE: 1"=100.00' 08/22/28 cm  
G: Lot Grading/Balthrop 4corner 09-12-2001

- LEGEND**
- 65.00 ELEVATION (ADD 1300 FOR M.S.L. DATUM)
  - \* MATCH EXISTING ELEVATION
  - TC TOP OF CURB ELEVATION
  - W WALK GRADE ELEVATION
  - HP HIGH POINT
  - VO VIEW-OUT BASEMENT LOT
  - WO WALK-OUT BASEMENT LOT
  - PVO POSSIBLE VIEW-OUT BASEMENT LOT
  - PWO POSSIBLE WALK-OUT BASEMENT LOT
  - X RANCH BASEMENT LOT
  - STORM WATER SEWER
  - FLOW DIRECTION

NOTE: 2 ACCESS ENTRANCES TO LOT 14 THROUGH RESERVE "F" (SEE TEXT).

- MINIMUM OPENINGS FOR:**
- LOTS 1-50, BLOCK 1,
  - LOTS 1-40, BLOCK 2,
  - LOTS 1-13, BLOCK 5
- a Minimum Opening for View-out or Walk-out = 1366.0
  - b Minimum Opening for View-out or Walk-out = 1377.0
  - c Minimum Opening for View-out or Walk-out = 1379.0
  - d Minimum Opening for View-out or Walk-out = 1374.0
  - e Minimum Opening for View-out or Walk-out = 1369.5

NOTE: CONTINGENT DEDICATION THROUGH RESERVE "G" (SEE TEXT).

SCALE: 1"=100'  
= IRON SET

B.M. - CHISELED "X" IN CENTER CONCRETE HEADWALL TO R.C.B. 24.5' SOUTH AND 56.7' WEST OF THE INTERSECTION OF THE CENTERLINES OF CENTRAL AND GREENWICH.  
ELEV. 188.828 CITY DATUM

MINIMUM PAD ELEVATIONS (LOWEST OPENING) AS FOLLOWS:  
LOTS 36-63, BLOCK 1 = ELEV. 1362.00 M.S.L.  
LOTS 14&15, BLOCK 5 = ELEV. 1362.00 M.S.L.

**APPROVED  
DRAINAGE PLAN**

- MINIMUM OPENINGS FOR:  
LOTS 51-56, BLOCK 1,  
LOT 10-15, BLOCK 3  
LOTS 16-33, BLOCK 4  
LOTS 1-10, BLOCK 6
- a MINIMUM OPENING FOR VIEW-OUT OR WALK-OUT 1364.2
  - b MINIMUM OPENING FOR VIEW-OUT OR WALK-OUT 1366.3
  - c MINIMUM OPENING FOR VIEW-OUT OR WALK-OUT 1364.0
  - d MINIMUM OPENING FOR VIEW-OUT OR WALK-OUT 1363.5
  - e MINIMUM OPENINGS FOR LOTS 51-63, BLOCK 1 = 1362.0 M.S.L.

REVISED 9-12-2001 **BALTHROP ADDN**