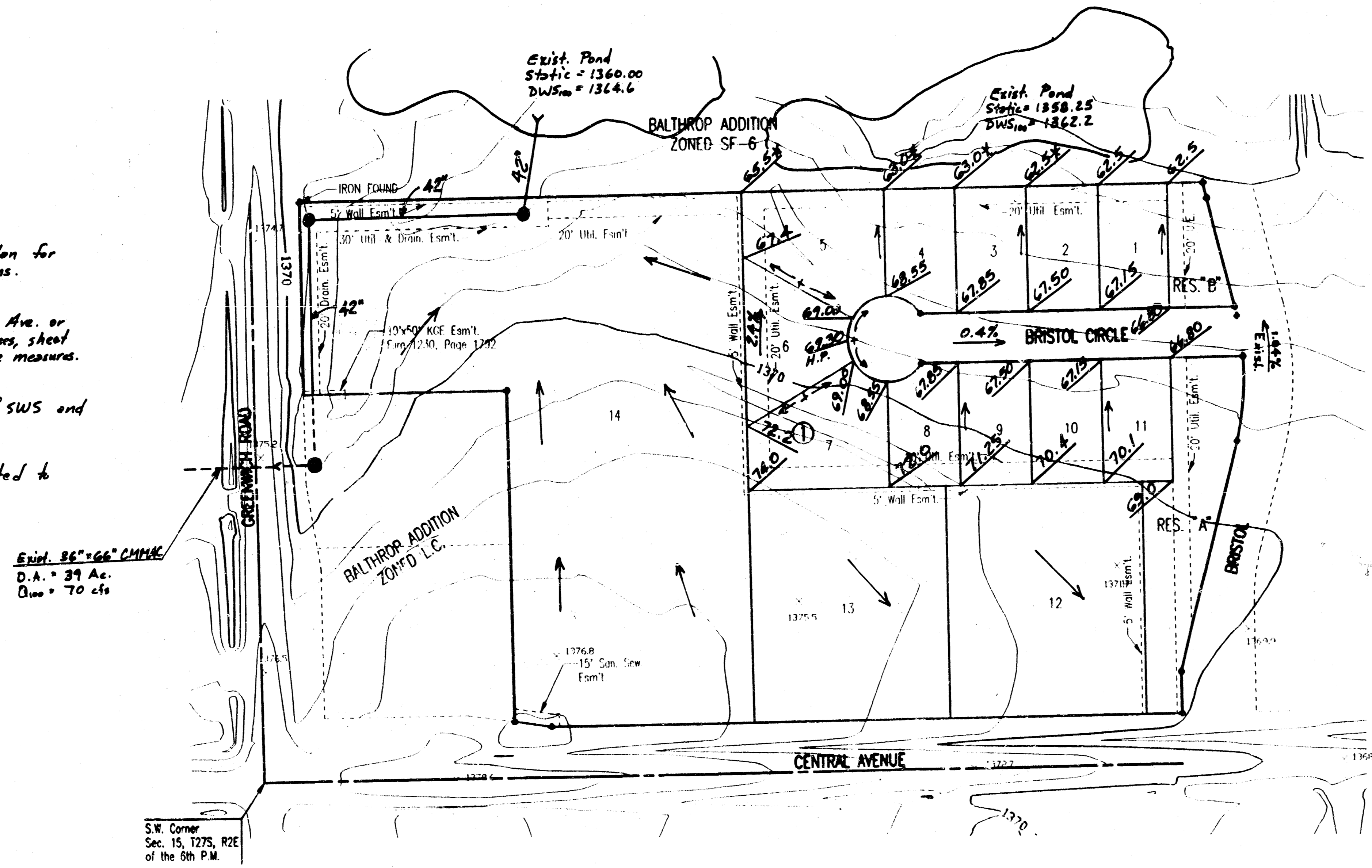


DRAINAGE PLAN  
**BALTHROP 2ND ADDITION**  
 TO WICHITA, SEDGWICK COUNTY, KANSAS

1. Reference Balthrop Addition Drainage Plan for hydrology and hydraulic computations.
2. Lots 12 & 13 shall drain to Central Ave. or Bristol Street via storm sewers, flumes, sheet flow, ditches, or other approved drainage measures.
3. Lot 14 shall be drained to proposed 42" SWS and inlets.
4. Commercial properties will not be permitted to drain across residential lots.



LEGEND

- $\frac{10}{1}$  - 4-Corner Lot Elevation
  - - Flow Direction
  - - SWS MH or Inlet
- Min. Pad for Lot 14 = 1366.0  
 Min. Pad for Lots 1-5 = 1364.0