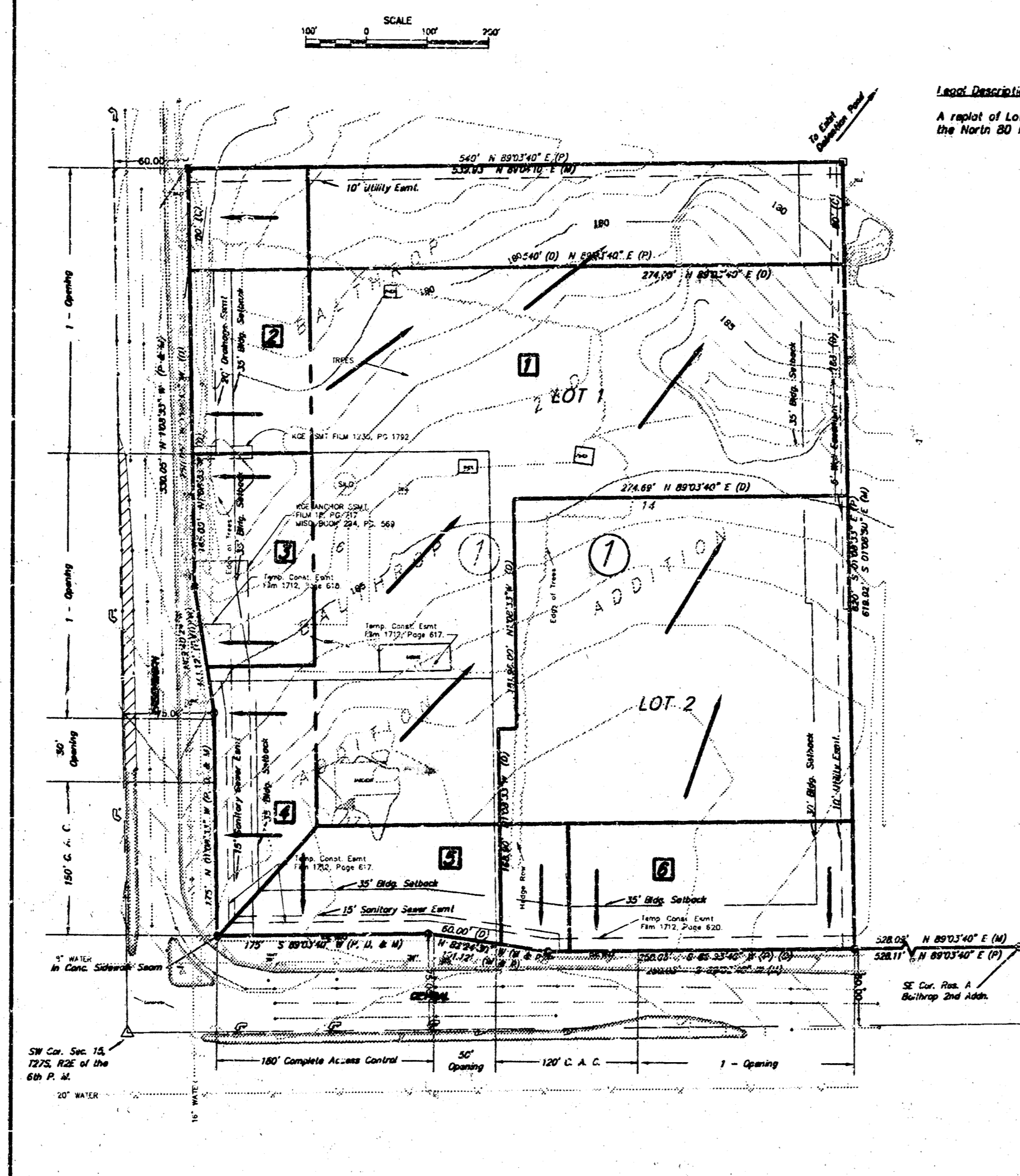


BALTHROP THIRD ADDITION DRAINAGE PLAN



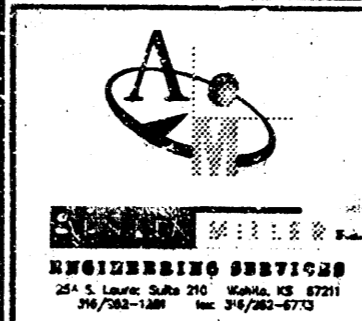
Land Description
A report of Lots 16 and 17 and Block 3, Balthrop Addition and Lot 14, Block 1, the North 80 feet thereof, Block 1, Balthrop Second Addition to Sedgewick County, Kansas.

Area #	Area	S	Developed			Undeveloped	
			100	Q _s	Q ₁₀₀	Q _s	Q ₁₀₀
1	5.10	4.36	7.37	18.9	31.9	10.0	19.5
2	0.50	4.36	7.37	1.9	3.1	1.0	1.7
3	0.60	4.36	7.37	2.2	3.8	1.2	2.0
4	0.40	4.36	7.37	1.5	2.5	0.8	1.3
5	0.56	4.36	7.37	2.1	3.5	1.1	1.9
6	0.54	4.36	7.37	2.0	3.4	1.1	1.8

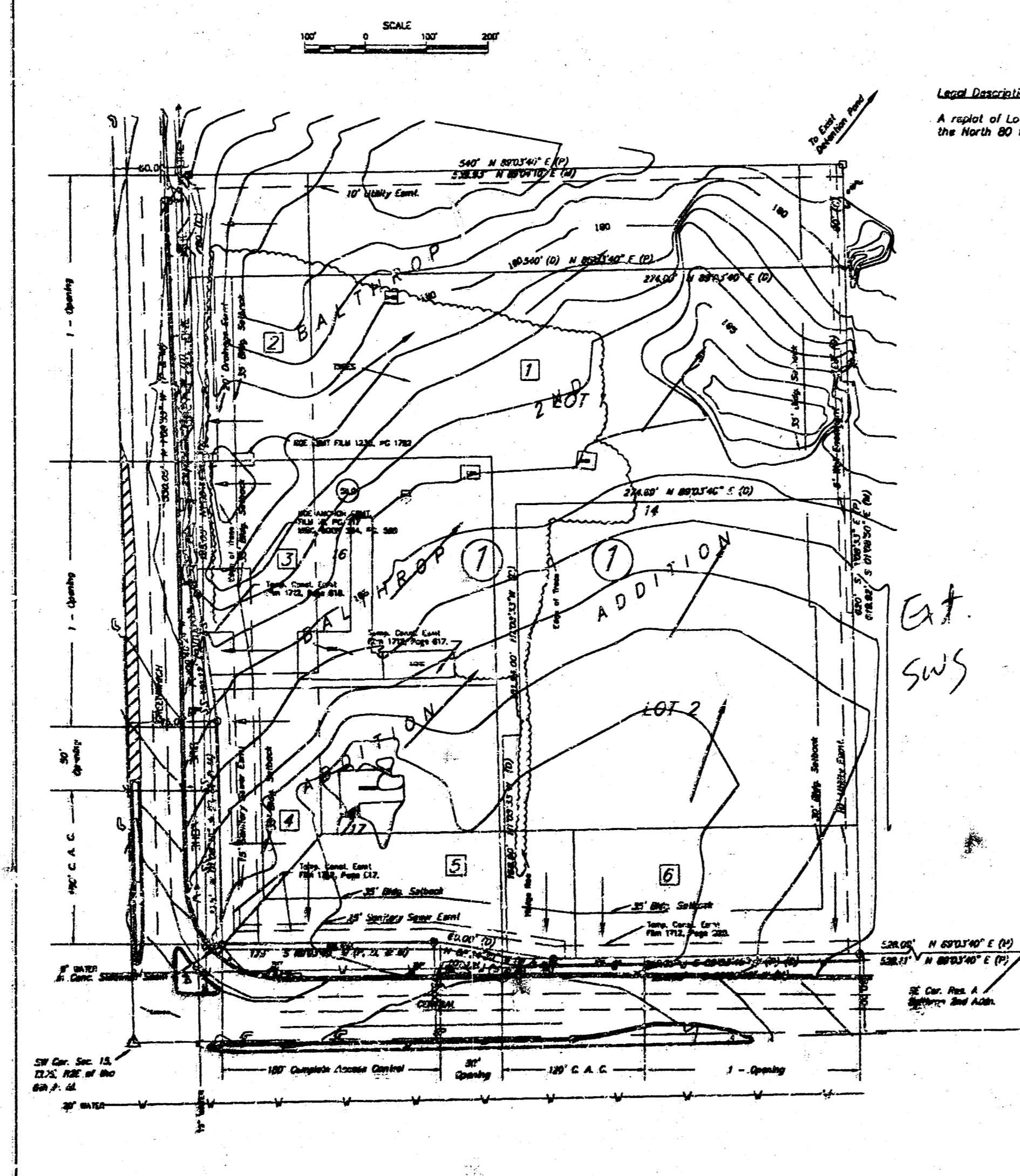
*Ext. private SWS
System at site dev.
Cross lot drainage
& off-site
drainage agreement*



- LEGEND**
- C.A.C. - Complete Access Control
 - Power Pole
 - Telephone Pedestal
 - Traffic Markers
 - Sign
 - - 1/2" Rubber Found w/ 10" Cap
 - - 1/2" Rubber Set w/ 1.5" 10" Cap
 - - 1/2" Rubber Found w/ "PEC" 10" Cap
 - ⊕ - Cut on Curb
 - ▣ - Pipe Found w/ "PEC" 10" Cap
 - (D) - Described per Title Commitment
 - (M) - Measured
 - (P) - Plotted
 - (C) - Calculated



BALTHROP THIRD ADDITION DRAINAGE PLAN



Land Description
A report of Lots 16 and 17 and Block 3, Balthrop Addition and Lot 14, Block 1, the North 80 feet thereof, Block 1, Balthrop Second Addition to Sedgewick County, Kansas.

Area #	Area	S	Developed			Undeveloped	
			100	Q _s	Q ₁₀₀	Q _s	Q ₁₀₀
1	5.10	4.36	7.37	18.9	31.9	10.0	19.5
2	0.50	4.36	7.37	1.9	3.1	1.0	1.7
3	0.60	4.36	7.37	2.2	3.8	1.2	2.0
4	0.40	4.36	7.37	1.5	2.5	0.8	1.3
5	0.56	4.36	7.37	2.1	3.5	1.1	1.9
6	0.54	4.36	7.37	2.0	3.4	1.1	1.8

*Ext.
SWS*

LEGEND

- C.A.C. - Complete Access Control
- Power Pole
- Telephone Pedestal
- Traffic Markers
- Sign
- - 1/2" Rubber Found w/ 10" Cap
- - 1/2" Rubber Set w/ 1.5" 10" Cap
- - 1/2" Rubber Found w/ "PEC" 10" Cap
- ⊕ - Cut on Curb
- ▣ - Pipe Found w/ "PEC" 10" Cap
- (D) - Described per Title Commitment
- (M) - Measured
- (P) - Plotted
- (C) - Calculated

