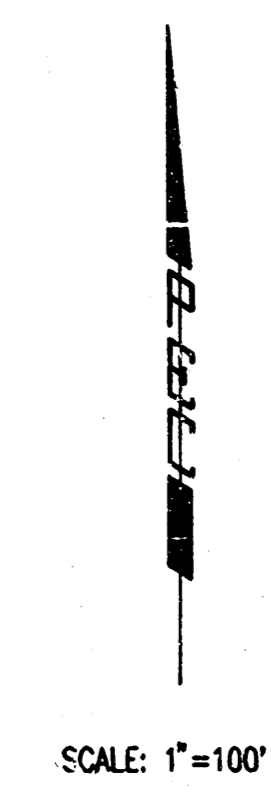


DRAINAGE PLAN FOR
BALTHROP 4TH ADDITION
 TO WICHITA, SEDGWICK COUNTY, KANSAS
 PART OF SE 1/4 SEC. 15, T 27S, R2E.

- NOTES
1. BRACKEN/TIPPERARY/WHITE TAIL LOOP USES 6 5/8" CURB AND 0.7' WALK GRADE.
 2. OTHER STREETS ARE 3 5/8" CURB AND 0.4' WALK GRADE.
 3. ALL PIPES AND BOX CULVERTS CONCRETE (n=0.013)



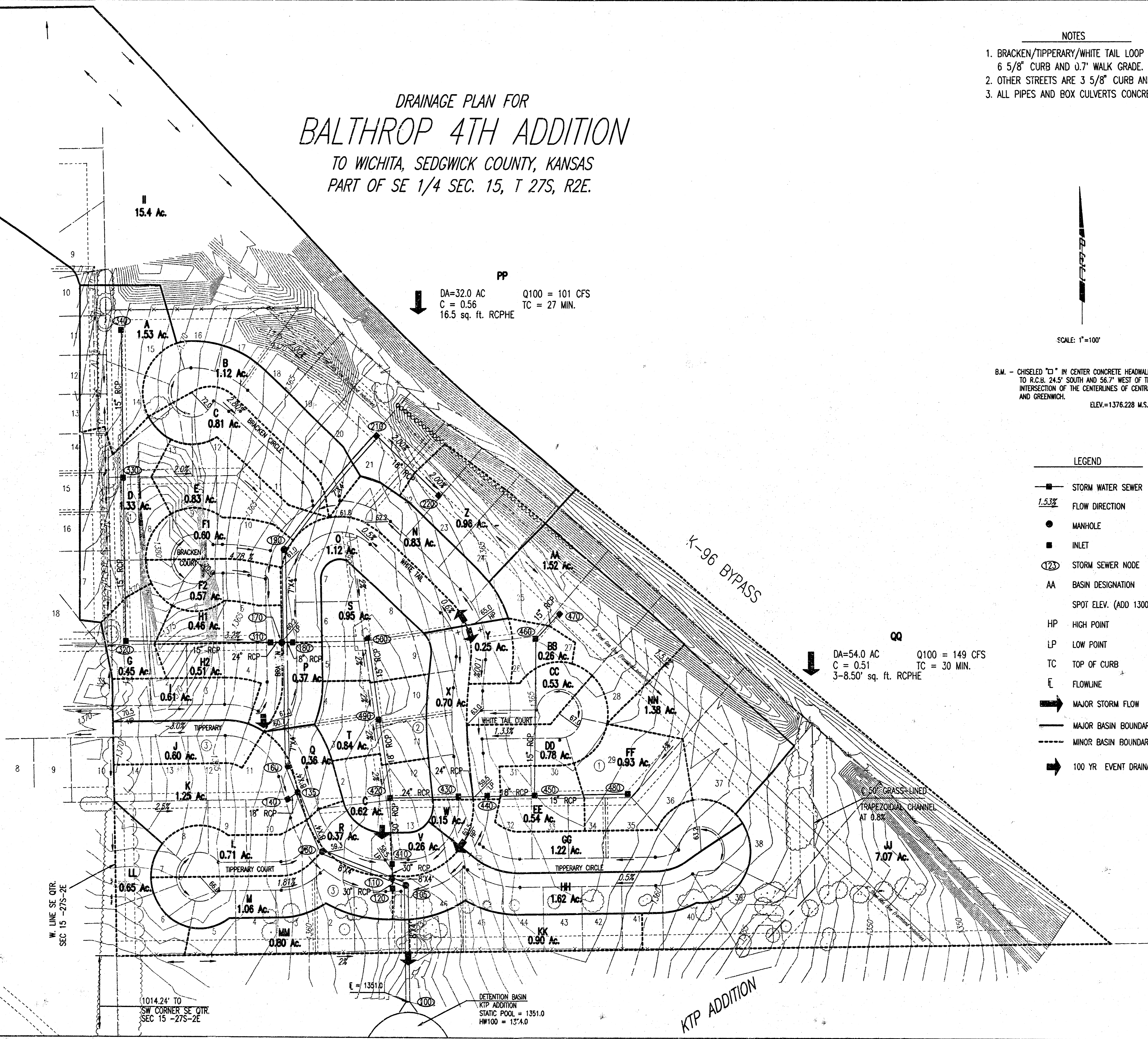
B.M. - CHISELED "C" IN CENTER CONCRETE HEADWALL TO R.C.B. 24.5' SOUTH AND 56.7' WEST OF THE INTERSECTION OF THE CENTERLINES OF CENTRAL AND GREENWICH.
 ELEV.=1376.228 M.S.L.

LEGEND

- STORM WATER SEWER
- 1.53% FLOW DIRECTION
- MANHOLE
- INLET
- ⊙ STORM SEWER NODE
- AA BASIN DESIGNATION
- SPOT ELEV. (ADD 1300 FOR MSL)
- HP HIGH POINT
- LP LOW POINT
- TC TOP OF CURB
- ℓ FLOWLINE
- ➔ MAJOR STORM FLOW
- MAJOR BASIN BOUNDARY
- - - MINOR BASIN BOUNDARY
- ➔ 100 YR EVENT DRAINAGE

PP
 DA=32.0 AC Q100 = 101 CFS
 C = 0.56 TC = 27 MIN.
 16.5 sq. ft. RCPHE

QQ
 DA=54.0 AC Q100 = 149 CFS
 C = 0.51 TC = 30 MIN.
 3-8.50' sq. ft. RCPHE



SEE SUPPORTING CALCULATIONS FOR HYDROLOGY

Michael W. Deery
 1-29-02

DSNR: OPER: MWN SCALE: 1"=100.00
 F:\2001\01545 (Wg) FINAL\drain_plan_01-29-2002_03:33:34_pm