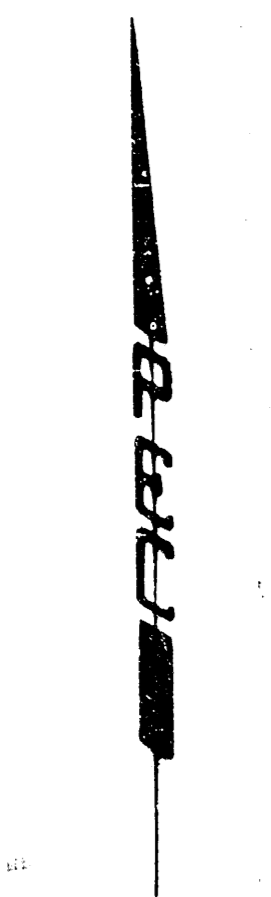


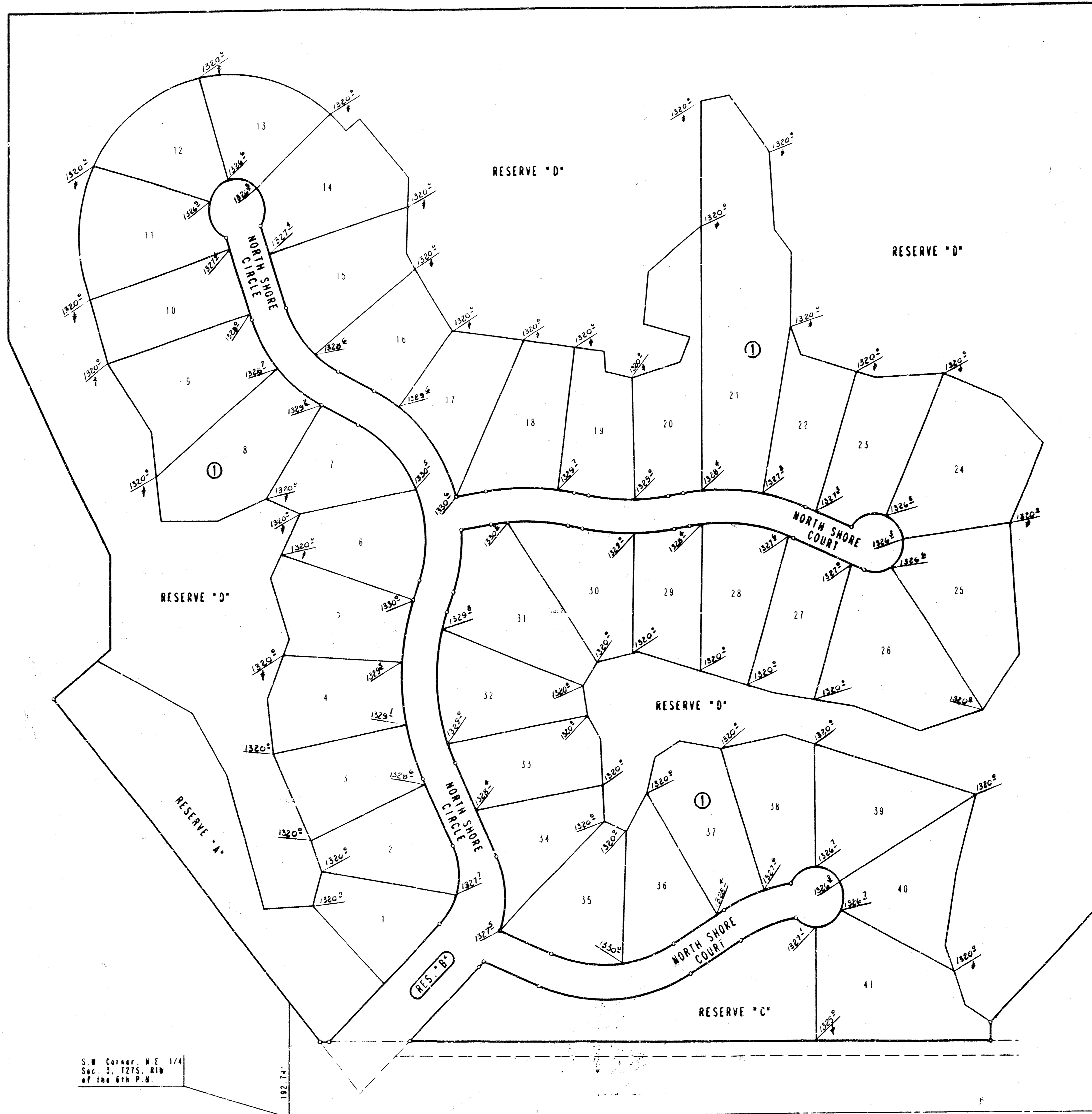
FOUR CORNER LOT GRADING
 BAREFOOT BAY
 AN ADDITION TO WICHITA,
 SEDGWICK COUNTY, KANSAS



SCALE 1" = 100'
 0" IRON SET

B.M. - HOOVER AND 21ST STREET NORTH
 CITY OF WICHITA BENCH MARK DISC.
 50 FEET NORTH AND 37 FEET EAST OF
 THE INTERSECTION OF THE CENTERLINE
 OF BOTH. ELEV. - 139.891 CITY DATUM

- MATCH EXISTING GROUND

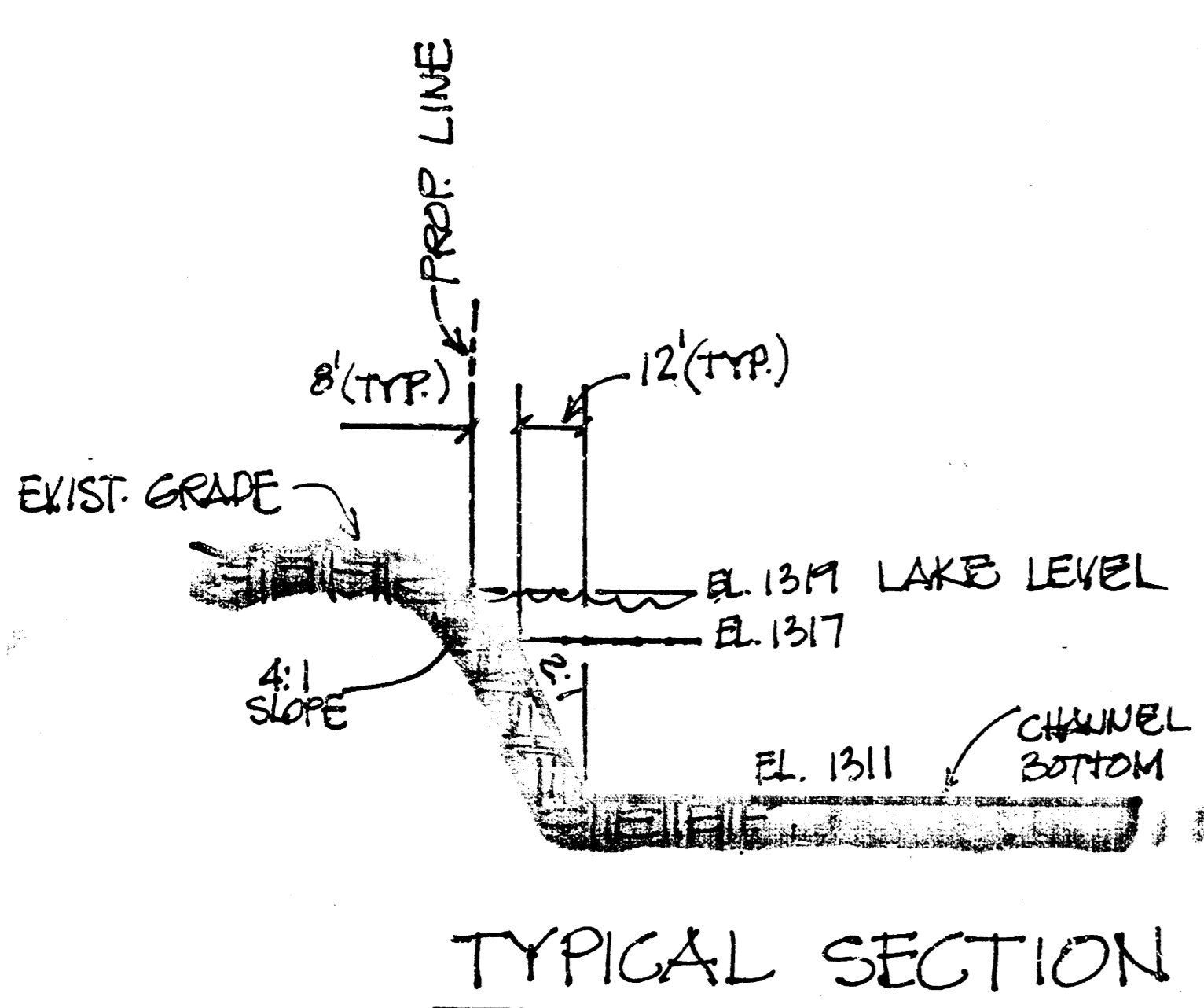


S.W. Corner, N.E. 1/4
 Sec. 3, T27S, R1W
 of the 6th P.M.

APPROVED
DRAINAGE PLAN

BAREFOOT BAY

AN ADDITION TO WICHITA, SEDGWICK COUNTY, KANSAS



SCALE: 1"=100'
 ○ = IRON SET

B.M. #1 - HOOPER AND 21ST STREET NORTH, CITY OF WICHITA BENCH MARK DISC, 39 FEET NORTH AND 37 FEET EAST OF THE INTERSECTION OF THE CENTERLINE OF BOTH.
 ELEV. +139.991 CITY DATUM
 ELEV. +1327.17 M.S.L.

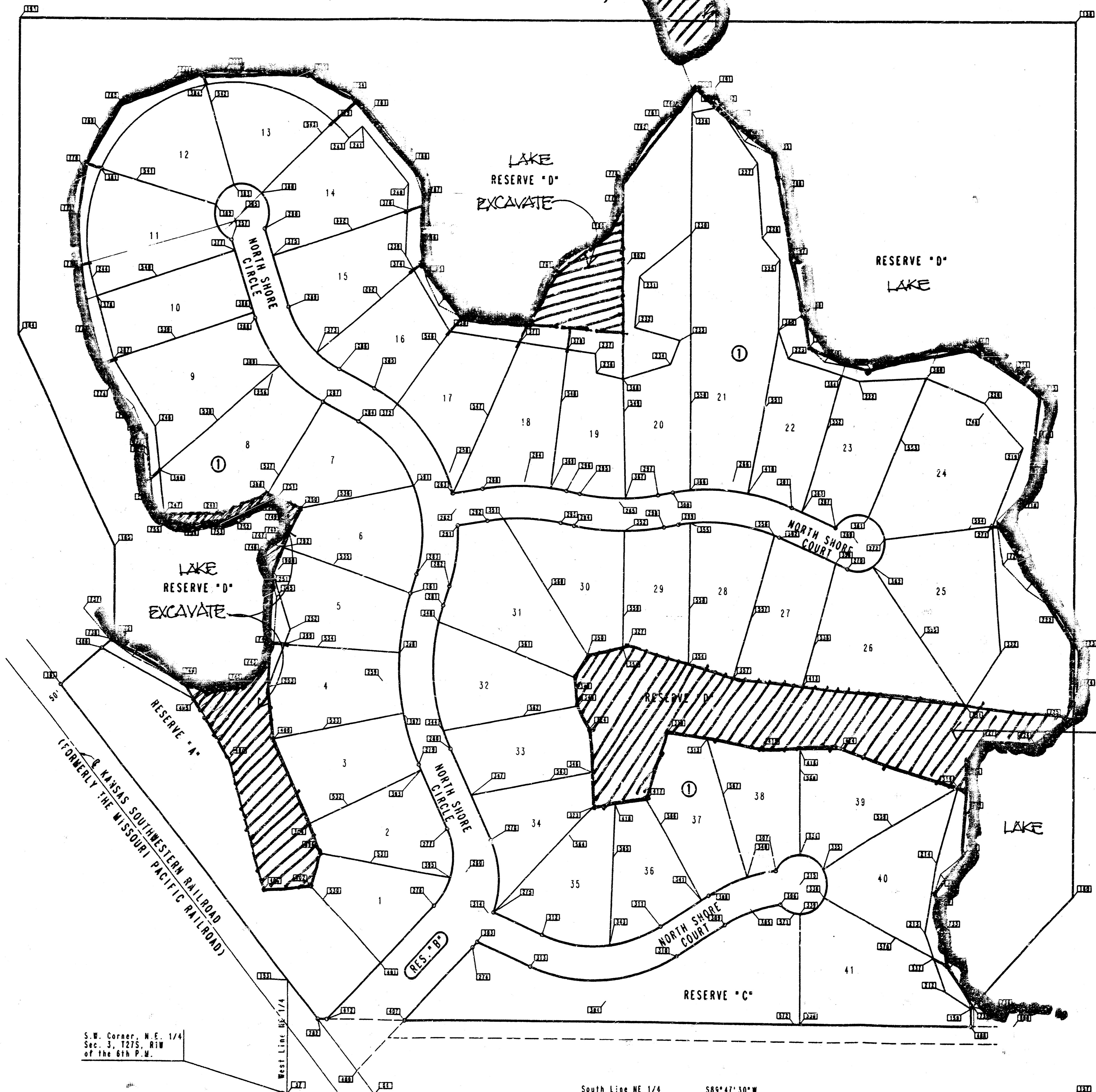
B.M. #2 - CHISELED "0" NE CORNER 3-7'-3" RCB BRIDGE ON RIDGE ROAD 175' NORTH OF SE CORNER, NE 1/4, SEC. 4, T27S, R1W.
 ELEV. +138.46 CITY DATUM
 ELEV. +1325.64 M.S.L.

MINIMUM PAD ELEVATION (LOWEST OPENING) FOR ALL LOTS SHALL BE 1325.4 M.S.L. OR 139.2 CITY DATUM.

LOWEST FLOOR ELEVATION FOR ALL LOTS SHALL BE 1324.5 M.S.L. OR 137.3 CITY DATUM.

NOTE: MONUMENTS FOR RESERVE BOUNDARIES NOT SET UNLESS OTHERWISE NOTED.

APPROVED AS NOTED
 By CITY ENGINEER OF WICHITA
EXCAVATION
 Boundary Sewers VRH 9/28/94
 Storm Sewers _____
 Driveway Approaches _____
 Water Mains _____
 Paving _____



S.W. Corner, N.E. 1/4
 Sec. 3, T27S, R1W
 of the 6th P.M.

South Line NE 1/4 S89°47'30"W