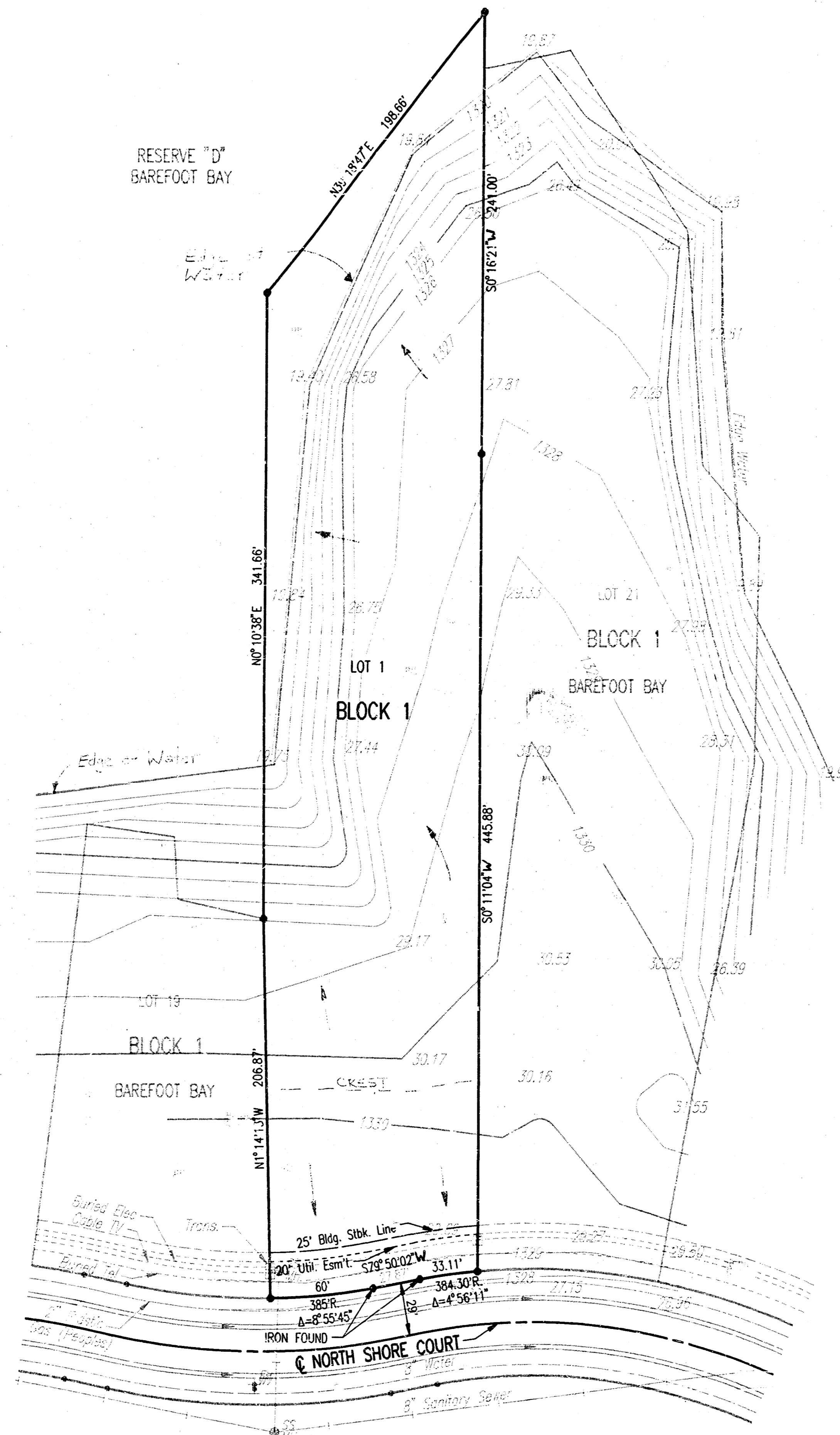


VICINITY MAP
BAREFOOT BAY 3RD ADDITION
 TO WICHITA, SEDGWICK COUNTY, KANSAS



SCALE: 1"=50'
 ● = IRON SET

B.M. #1: HOOVER AND 21ST STREET NORTH, CITY OF WICHITA BENCH MARK DISC, 30 FEET NORTH AND 37 FEET EAST OF THE INTERSECTION OF THE CENTERLINES OF BOTH.
 ELEV.=139.991 CITY DATUM
 ELEV.=1327.17 M.S.L.

B.M. #2: CHISELED "G" NE CORNER, 3-47x3' RCB BRIDGE ON RIDGE ROAD 175' NORTH OF SE CORNER, NE 1/4, SEC. 4, T27S, R1W.
 ELEV.=138.46 CITY DATUM
 ELEV.=1325.84 M.S.L.

MINIMUM PAD ELEVATION (LOWEST OPENING) SHALL BE 1325.5 M.S.L. OR 138.3 CITY DATUM.
 LOWEST FLOOR ELEVATION SHALL BE 1325.5 M.S.L. OR 138.3 CITY DATUM.

	10-YR.	100-YR.
Proposed Area	1.77 Ac.	1.72 Ac.
Existing Improvements	0.44	0.61
Proposed 300' Radius	3.80 Ac.	7.56 Ac.
TOTAL IMPROVEMENTS	5.91 Ac.	9.89 Ac.

All the ramp will remain within the existing lot lines and the proposed 300' radius will be within the 100' setback line.

O:\1996\96390\BARE3RD.DWG 06-07-1996 2:55:15 pm