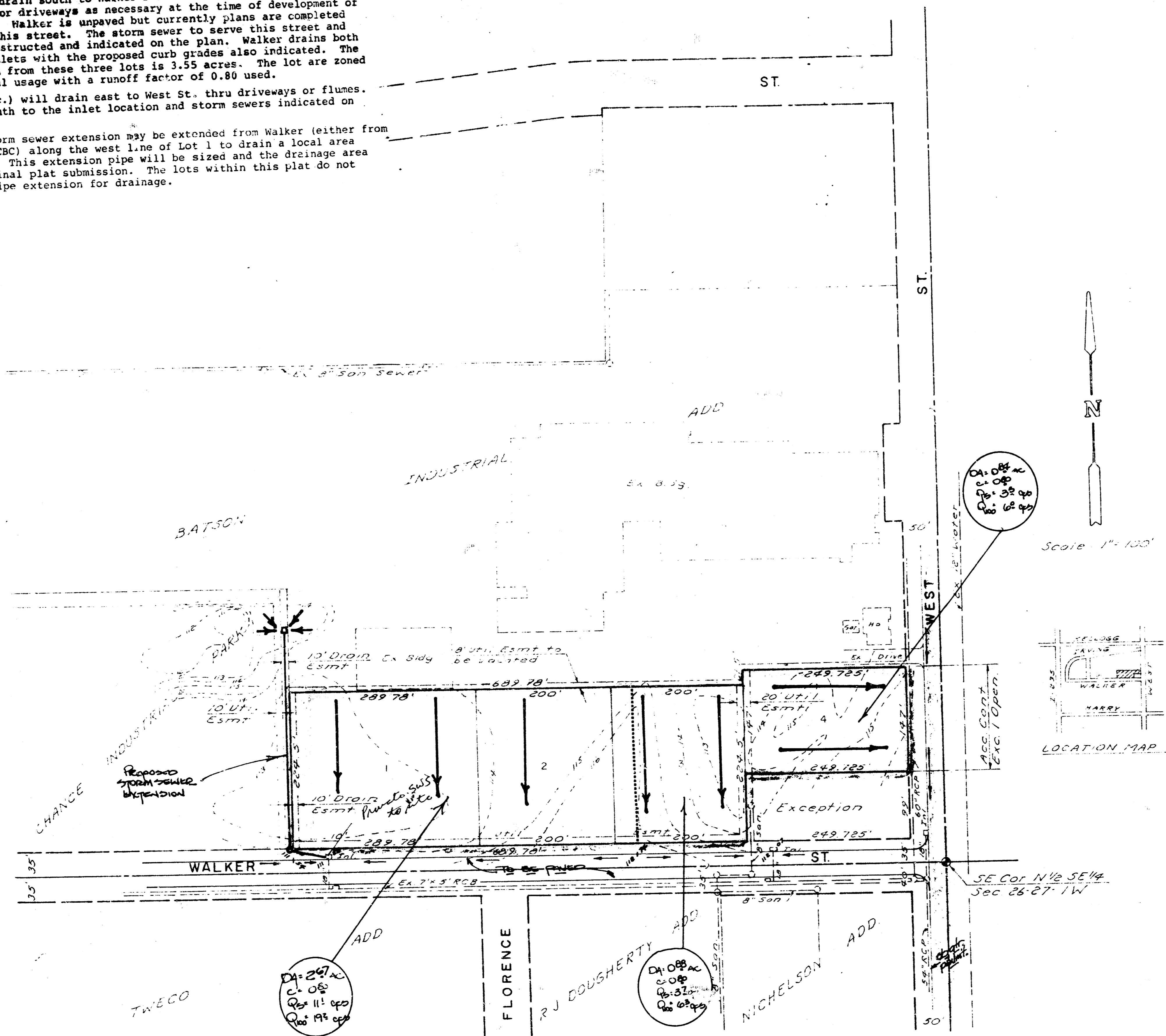


**DRAINAGE NOTES**

Lots 1-3 will drain south to Walker Street and discharge to the street thru either flumes or driveways as necessary at the time of development of each of these lots. Walker is unpaved but currently plans are completed for the paving of this street. The storm sewer to serve this street and area is already constructed and indicated on the plan. Walker drains both east and west to inlets with the proposed curb grades also indicated. The total drainage area from these three lots is 3.55 acres. The lot are zoned for light industrial usage with a runoff factor of 0.80 used.

Lot 4 (0.84 Ac.) will drain east to West St. thru driveways or flumes. West St. drains south to the inlet location and storm sewers indicated on the plan.

A proposed storm sewer extension may be extended from Walker (either from the inlet or the RCBC) along the west line of Lot 1 to drain a local area outside this plat. This extension pipe will be sized and the drainage area defined for the final plat submission. The lots within this plat do not depend upon this pipe extension for drainage.



PRELIMINARY PLAT  
**BATSON INDUSTRIAL 2ND ADDITION**

PART OF THE SE 1/4 SEC. 26-27-1W  
OWNER- BATSON PROPERTIES

**DRAINAGE PLAN**

B.M. City disc 43' W & 34' N  
E Irving & West.  
E.I. 113.10

Feb 20 1985  
**ED BAUGHMAN COMPANY, P.A.**  
SURVEYING & ENGINEERING  
346 262-7271 • 330 LAURA • WICHITA, KANSAS 67211