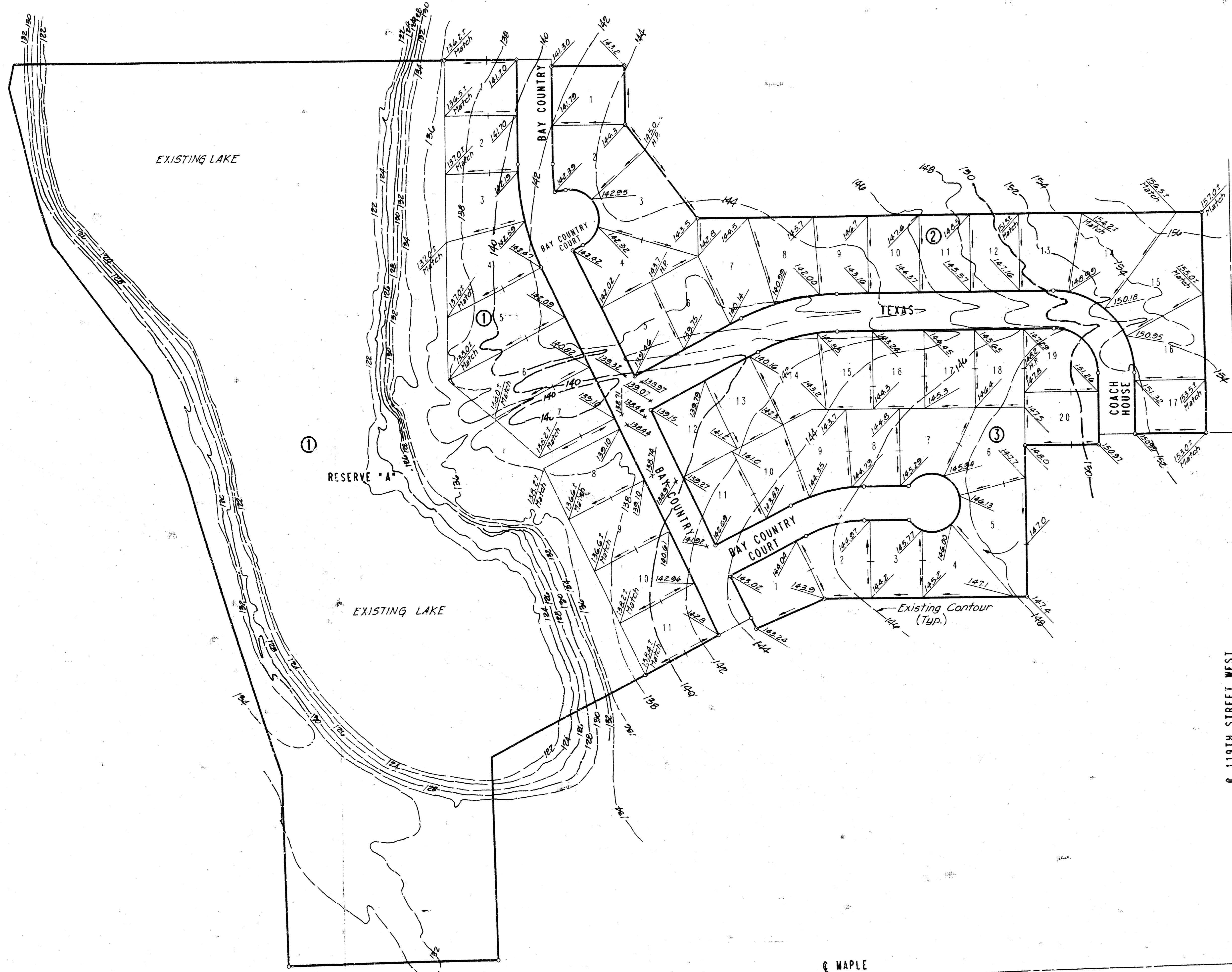




# BAY COUNTRY ESTATES 2ND ADDITION

TO WICHITA, SEDGWICK COUNTY, KANSAS

PROJECT NO.	SHEET NO.	TOTAL SHEETS
# 412-76-245-8 -000-000-001		



SCALE: 1" = 100'

- = IRON SET
- C.A.C. = COMPLETE ACCESS CONTROL
- B.S.L. = BUILDING SETBACK LINE
- S.S. ESM.T. = SANITARY SEWER EASEMENT
- B.M. = DISK 40' EAST AND 46' SOUTH OF INTERSECTION AT 6' OF CENTRAL WITH E OF 119TH STREET WEST CITY DATUM ELEV. -156.93

MINIMUM PAD ELEVATION (LOWEST OPENING) FOR LOTS 1 THROUGH 11, BLOCK 1, SHALL BE 1523.00 W.S.L. OR 155.60 (CITY DATUM).

PLAN	DATE
BY	
DATE	
BY	
DATE	
BY	
DATE	

DRAWING NAME: 22-92103 PLAT  
 CLEAR COORDINATES:  
 ROTATION ANGLE: ON  
 SPECIAL INSTRUCTIONS:

**APPROVED**  
**DRAINAGE PLAN**

BAY COUNTRY ESTATES 2ND ADDITION

**DETAIL LOT GRADING PLAN**

PROFESSIONAL ENGINEERING CONSULTANTS, P.A.  
 ENGINEERS  
 WICHITA, KANSAS

Designed by	Checked by
Drawn by DEP	Date: JUNE, 1992 Job No.

S.E. Cor. Sec. 24,  
 T27S, R2W of the 61N P.M.

S. Line SE 1/4, Sec. 24, T27S, R2W