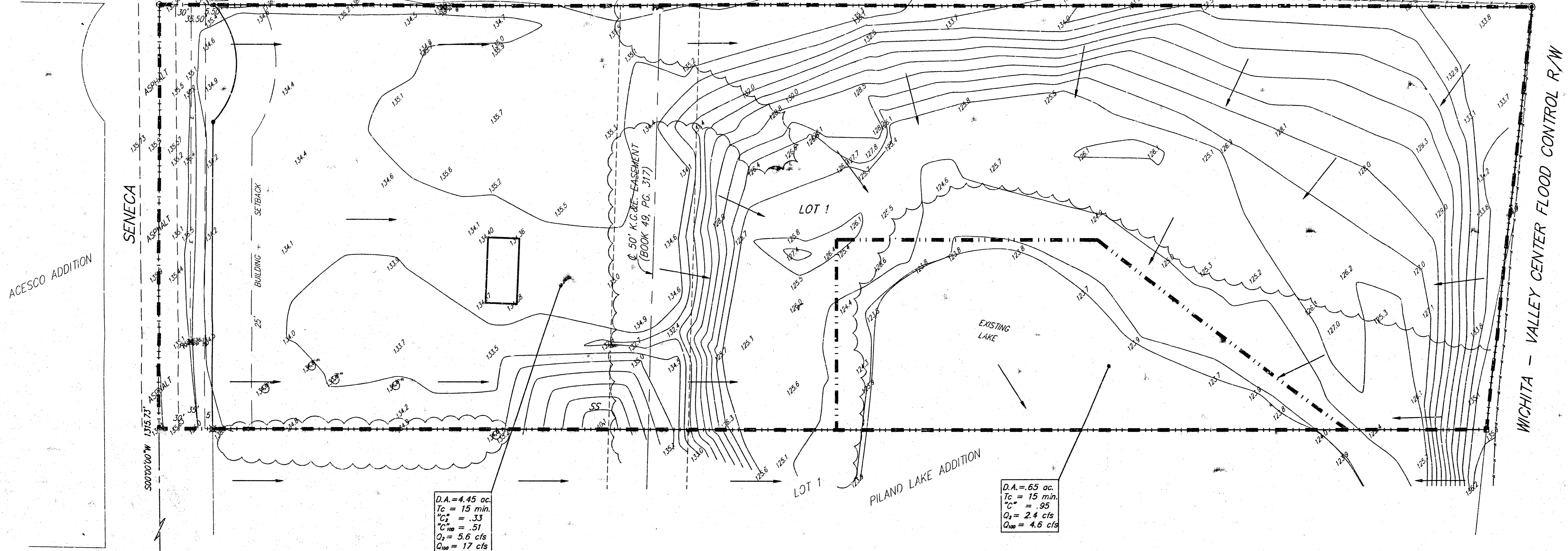


DRAINAGE PLAN BELLOWS ADDITION WICHITA, SEDGWICK COUNTY, KANSAS

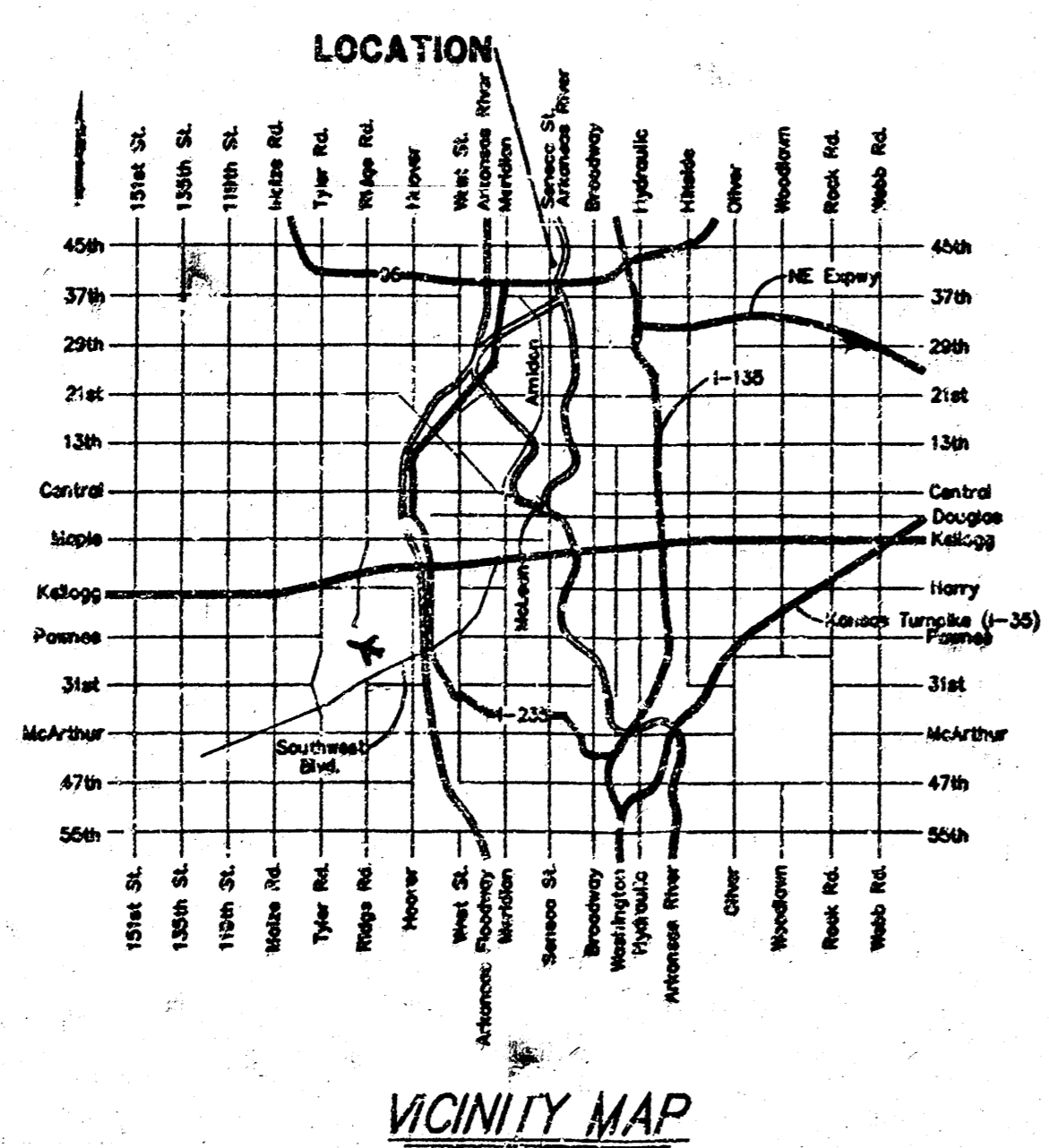
KANSAS GAS & ELECTRIC CO.
% HARVEY SIEMENS
BOX 208
WICHITA, KS 67201

NW COR. SW 1/4, NW 1/4,
SEC. 29, TWP. 26-S, R-1-E



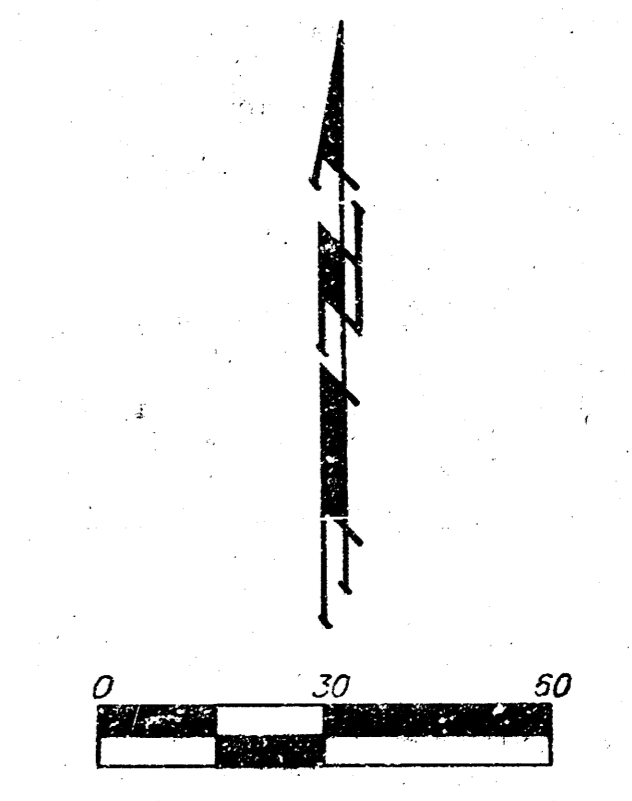
D.A. = 4.45 ac.
Tc = 15 min.
Cp = .33
C100 = .51
Q2 = 5.6 cfs
Q100 = 17 cfs

D.A. = 65 ac.
Tc = 15 min.
Cp = .95
Q2 = 2.4 cfs
Q100 = 4.6 cfs



State of Kansas)
Sedgwick County) We, Baughman Company, P.A., Surveyors in
aforesaid county and state do hereby certify that we have surveyed and
platted "BELLOWS ADDITION", Wichita, Sedgwick County, Kansas and that
the accompanying plat is a true and correct exhibit of the property
surveyed, described as the north 257.50 feet of the part of the SW 1/4
of the NW 1/4 of Sec. 29, Twp. 26-S, R-1-E of the 6th P.M., Wichita,
Sedgwick County, Kansas, lying west of the Wichita-Valley Center Flood
Control Right of Way.

- PP □ = Power Pole
- ⊙ = 4" REBAR W/ "BAUGHMAN" CAP (SET)
- ⊙ = MONUMENT (FOUND)
- ⊗ = IRON PIPE (FOUND)
- = 1/2" IRON (FOUND)
- ⊠ = 3/4" IRON PIPE (FOUND)
- (M) = MEASURED
- (D) = DESCRIBED
- (P) = PLATTED
- (C) = CALCULATED
- (C-PI) = CALCULATED PER PLATTED INFO
- (C-D) = CALCULATED PER DEED INFO.



MINIMUM BUILDING PAD ELEVATIONS FOR LOWEST OPENING TO THE STRUCTURES	
LOT	ELEVATION
1	1324