

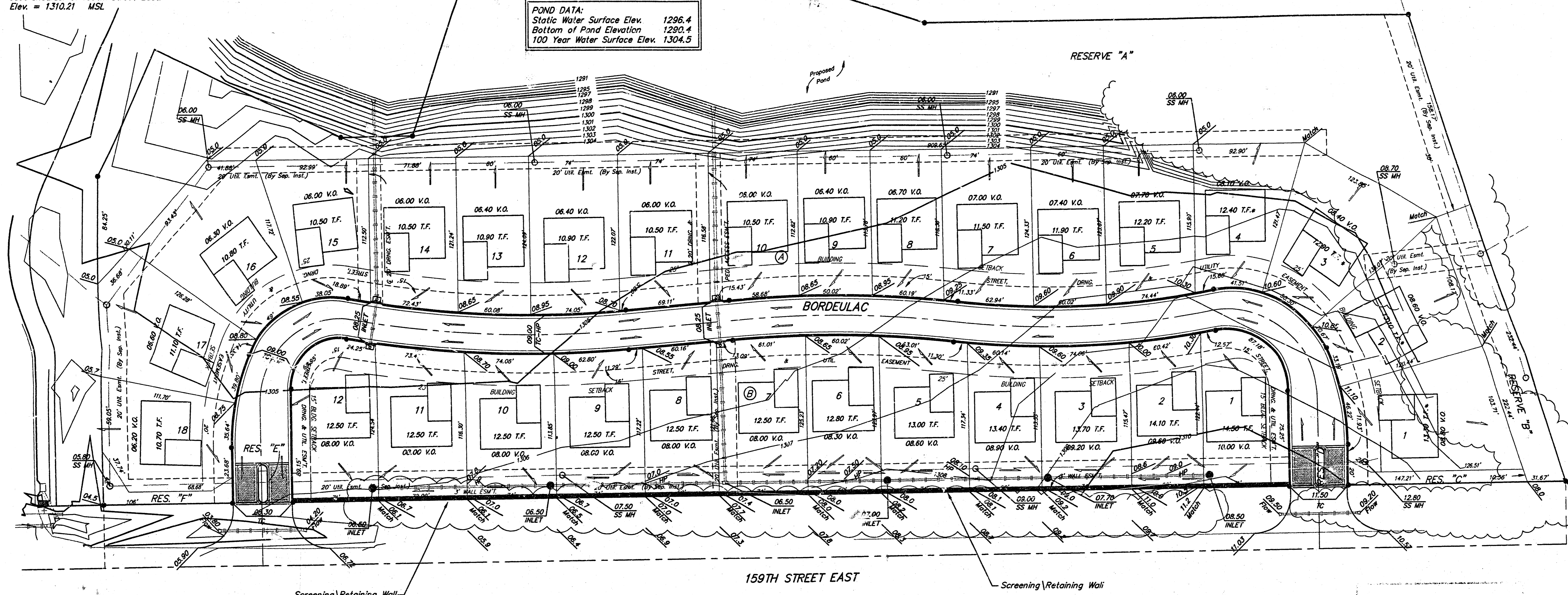
BENCHMARK:
 BM #1: RR spike in PP east of 159th Street East, south of SE corner of Belriv Addition.
 Elev. = 1304.55 MSL

BM #2: "□" cut in top of curb at the west end of the south curb of median on Elm Street east of 159th Street East.
 Elev. = 1313.04 MSL

BM #3: Concrete nail in pavement at centerline of Lakeside Drive on the east shoulder of 159th Street East.
 Elev. = 1310.21 MSL

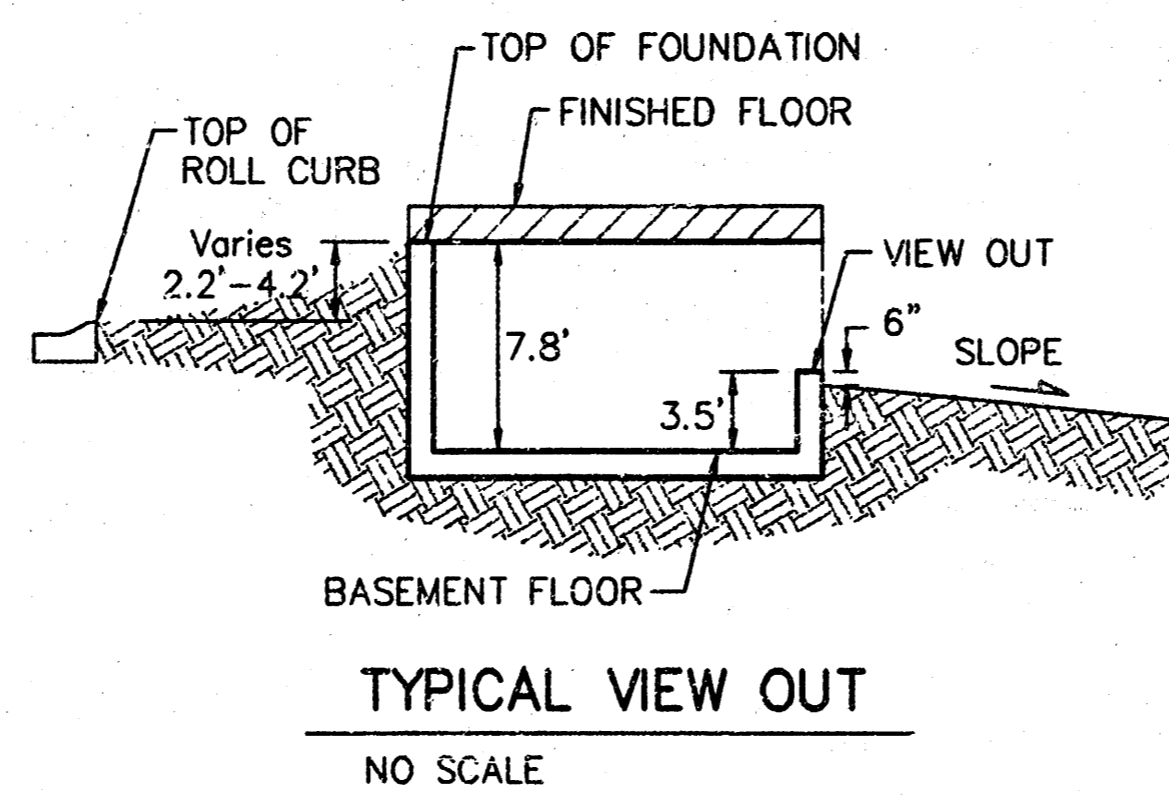
Scale: 1" = 40'
 • = Iron

POND DATA:
 Static Water Surface Elev. 1296.4
 Bottom of Pond Elevation 1290.4
 100 Year Water Surface Elev. 1304.5



MINIMUM BUILDING PAD ELEVATIONS FOR LOWEST OPENING TO THE STRUCTURES

LOT	BLOCK	ELEVATION
1,2,3	A	1307
4-17	A	1306



NOTE:
 Proposed top of foundation and minimum view-out elevations are shown on plans. Contractor to set finish floor elevation.
 All street elevations shown on plans are for top of curb (full height).
 View-out elevations are denoted as XX.X V.O.
 * Extra deep foundations may be required on Lots 1-4, Block A.

APPROVED
 DRAINAGE PLAN

Revised 12\30\99 by TMG per BLP
 Revised 12\29\99 by TMG per NBW

SEDWICK COUNTY, KANSAS
BAUGHMAN COMPANY P.A.
 ENGINEERING, SURVEYING, & PLANNING
 316-562-7271 • 315 ELLIS • WICHITA, KANSAS 67211

DESIGN	DRAWN	APPROVED	DATE	SCALE	SHEET
BF	TMG		10-99	1"=40'	OF

Print each page at 13 5/16" x 19 1/2"