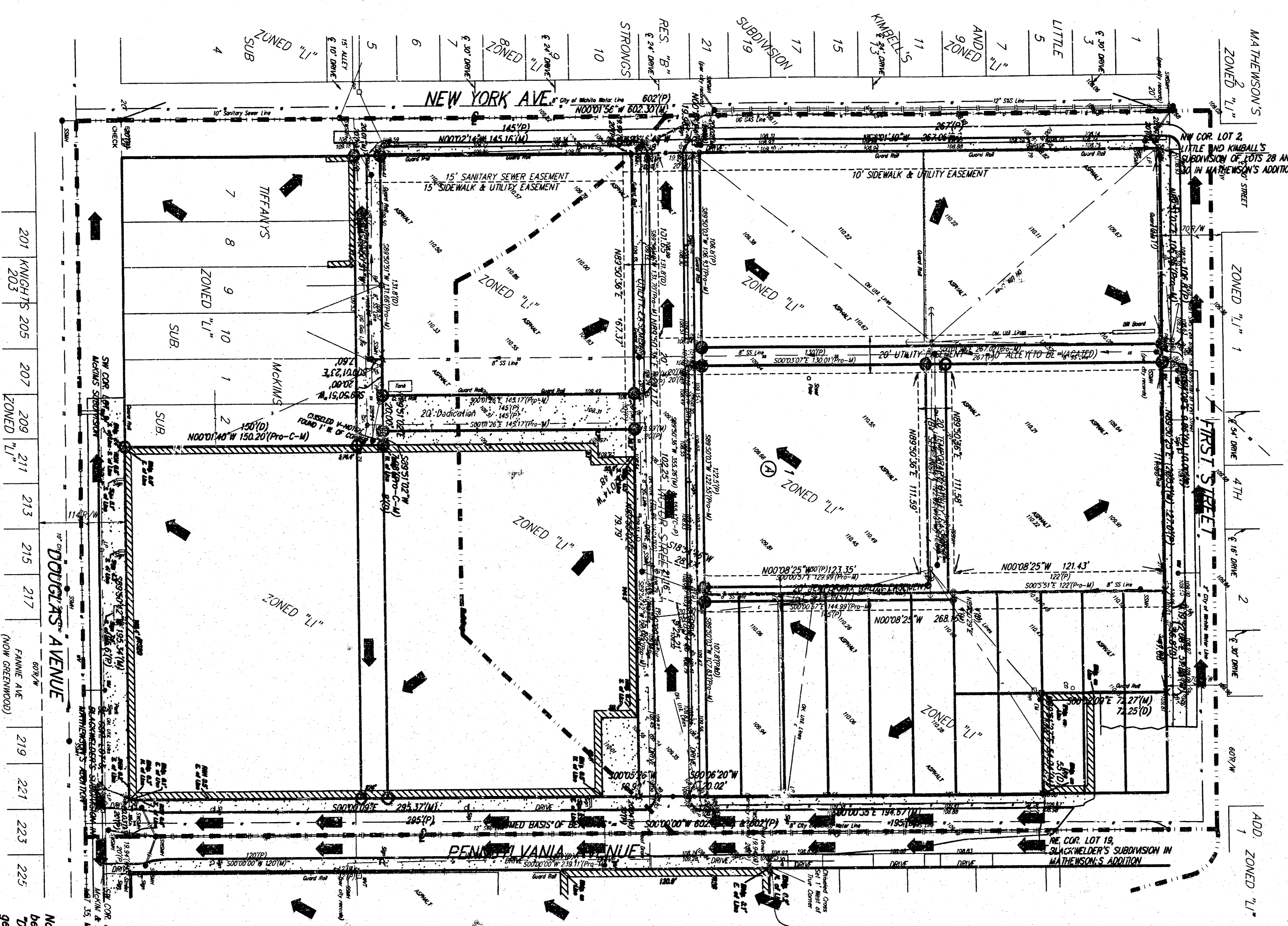


DRAINAGE PLAN BIG DOG MOTORCYCLES ADDITION WICHITA, SEDGWICK COUNTY, KANSAS



GENERAL NOTE: SW CORNER OF INTERSECTION, NW CORNER OF THE BASE OF TRAFFIC SIGNAL LIGHT, 30.0' WEST OF CENTER LINE OF DOUGLAS AVENUE, AND 15.0' WEST OF CENTER LINE OF NEW YORK AVE (CITY DATA)

201	KINGDA'S	205	207	209	211	213	215	217	219	221	223	225
				ZONED "L1"								

Note: Stormwater runoff rates have not been calculated for this project. This Drainage Plan depicts the existing general flow patterns. Currently, the area is nearly 100% impervious. Construction efforts will not change the hydrologic conditions.

30 JUNE 2003

BAUGHMAN COMPANY P.A.
ENGINEERING, SURVEYING & PLANNING
1727 WEST 21ST AVENUE, SUITE 200
WICHITA, KANSAS 67211

DINCO MOTORCYCLES, INC.
1200 E. DOUGLAS
WICHITA, KS 67214
316-261-5121

