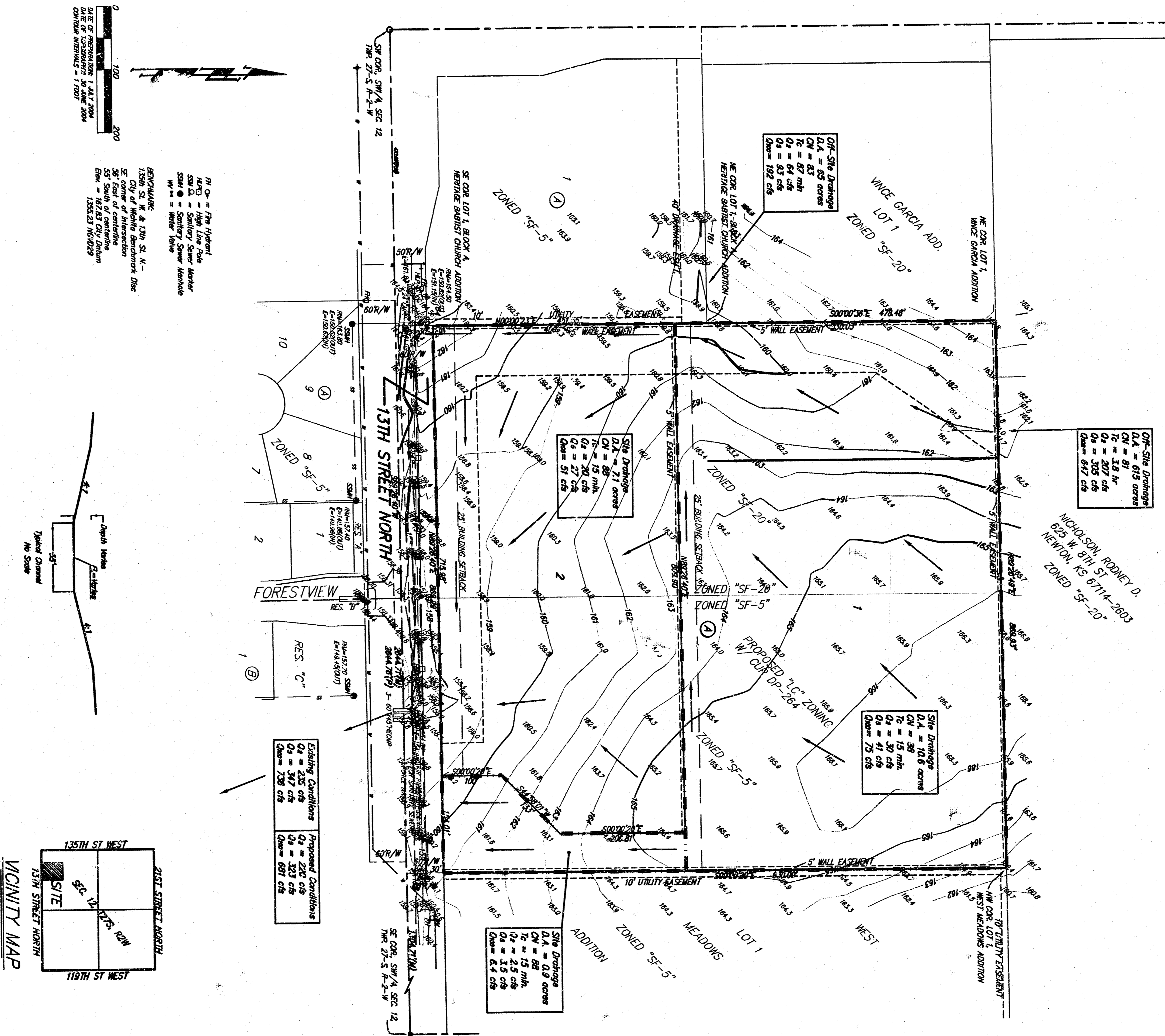


DRAINAGE PLAN BLATTNER ADDITION WICHITA, SEDGWICK COUNTY, KANSAS



LEGEND
 DISTANCE BUILDING STORIES PER COMMUNITY UNIT
 PLAN 10'-3/4"

NOTE: A precise grading plan for drainage has been indicated for this subdivision. The drainage system shown on this plan is based on the proposed ground surface, which is shown on the attached site plan. The drainage system shown on this plan is based on the proposed ground surface, which is shown on the attached site plan. The drainage system shown on this plan is based on the proposed ground surface, which is shown on the attached site plan.

NOTE: Road drainage rates were determined using the "Road Drainage Rates" from the "Road Drainage Rates" manual. The drainage rates for the five basins of the hydrograph are shown in the table below.

Vicinity Map

21st Street North
 23rd Street North
 13th St West
 11th St West
 SITE
 VICINITY MAP

Braughman Company, P.A.
 3123B Wakarusa Street, Parkersburg, PA 15656-4149
 Telephone: (724) 865-1111
 Fax: (724) 865-1112
 E-mail: braughman@braughman.com
 Website: www.braughman.com

Braughman
 PROJECT: BLATTNER ADDITION / DRAINAGE PLAN

Revised: 27 JULY 2004