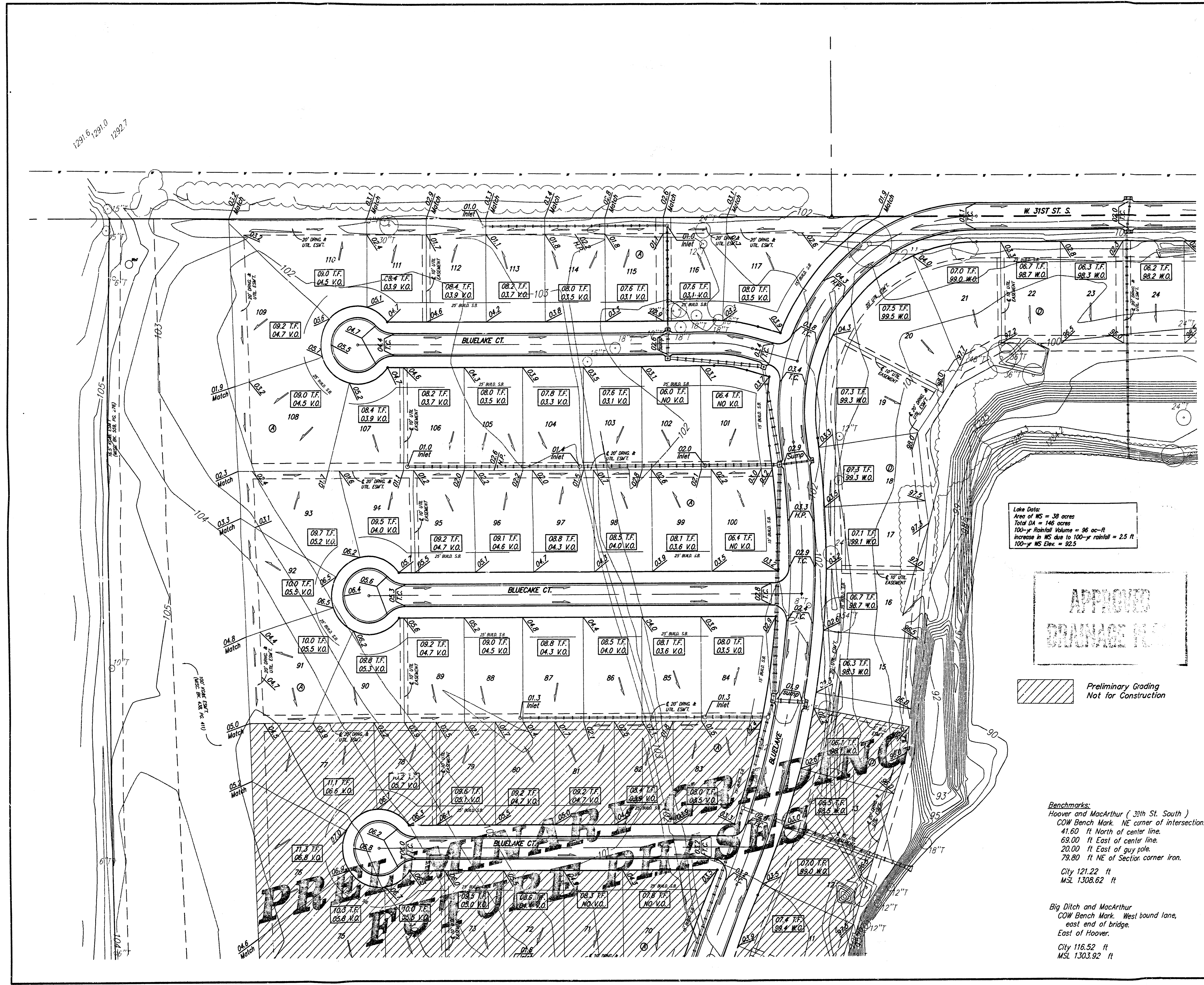
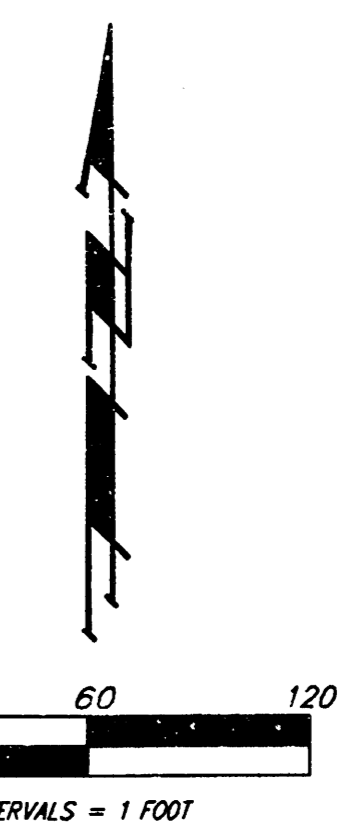


1291.8, 1291.0, 1292.7



Lake Data:
 Area of WS = 38 acres
 Total DA = 146 acres
 100-yr Rainfall Volume = 96 ac-ft
 Increase in WS due to 100-yr rainfall = 2.5 ft
 100-yr NS Elev = 92.5

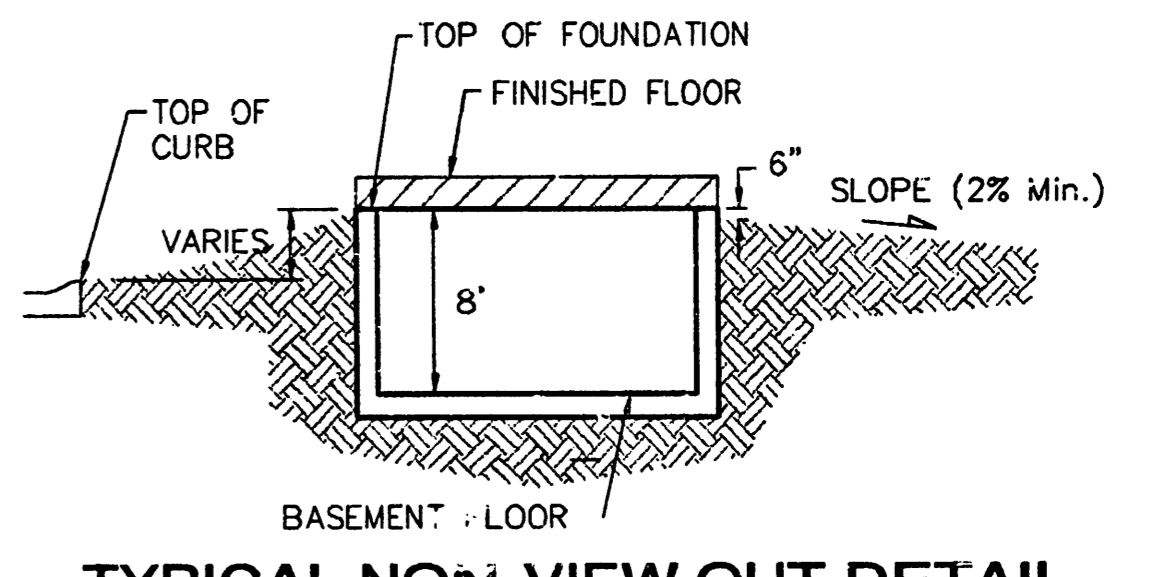
**APPROVED
 DRAINAGE PLAN**

Preliminary Grading
 Not for Construction

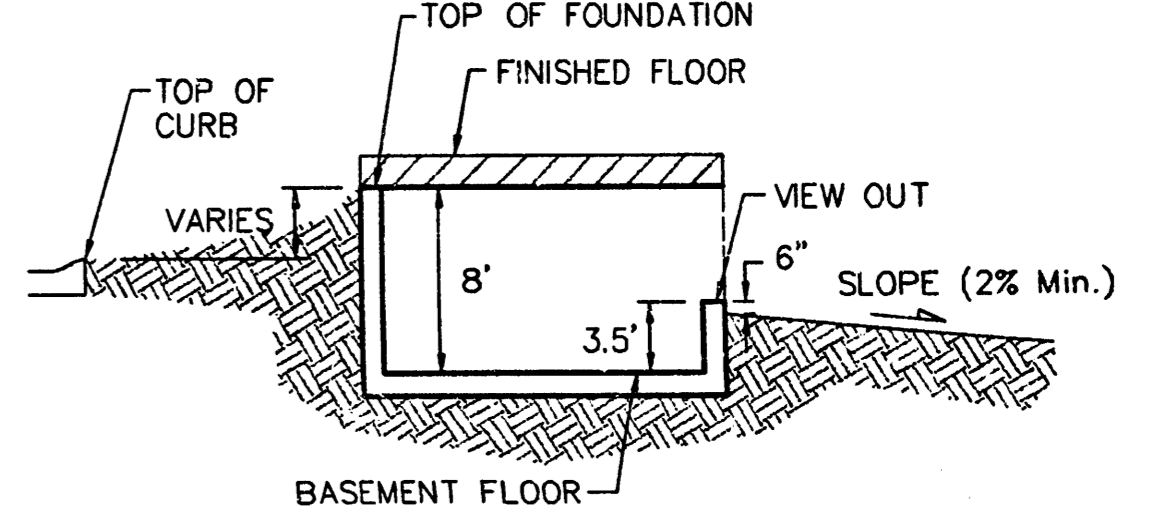
Benchmarks:
 Hoover and MacArthur (33rd St. South)
 COW Bench Mark, NE corner of intersection.
 41.60 ft North of center line.
 63.00 ft East of center line.
 20.00 ft East of guy pole.
 79.80 ft NE of Section corner iron.

City 121.22 ft
 MSL 1308.62 ft

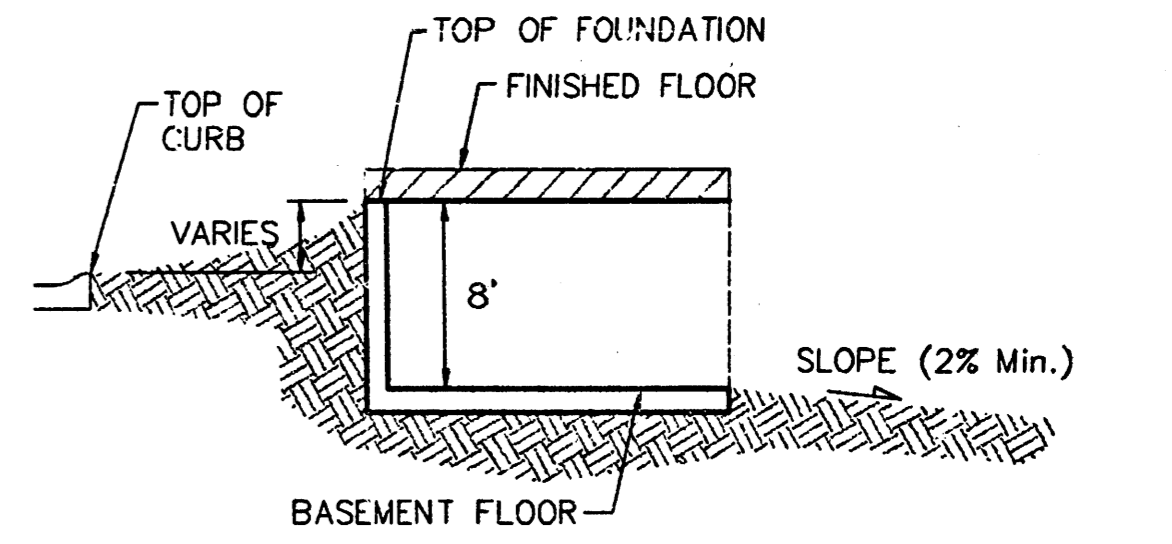
Big Ditch and MacArthur
 COW Bench Mark, West bound lane,
 east end of bridge.
 East of Hoover.
 City 116.52 ft
 MSL 1303.92 ft



TYPICAL NON-VIEW OUT DETAIL
 NO SCALE



TYPICAL VIEW OUT DETAIL
 NO SCALE



TYPICAL WALK OUT DETAIL
 NO SCALE

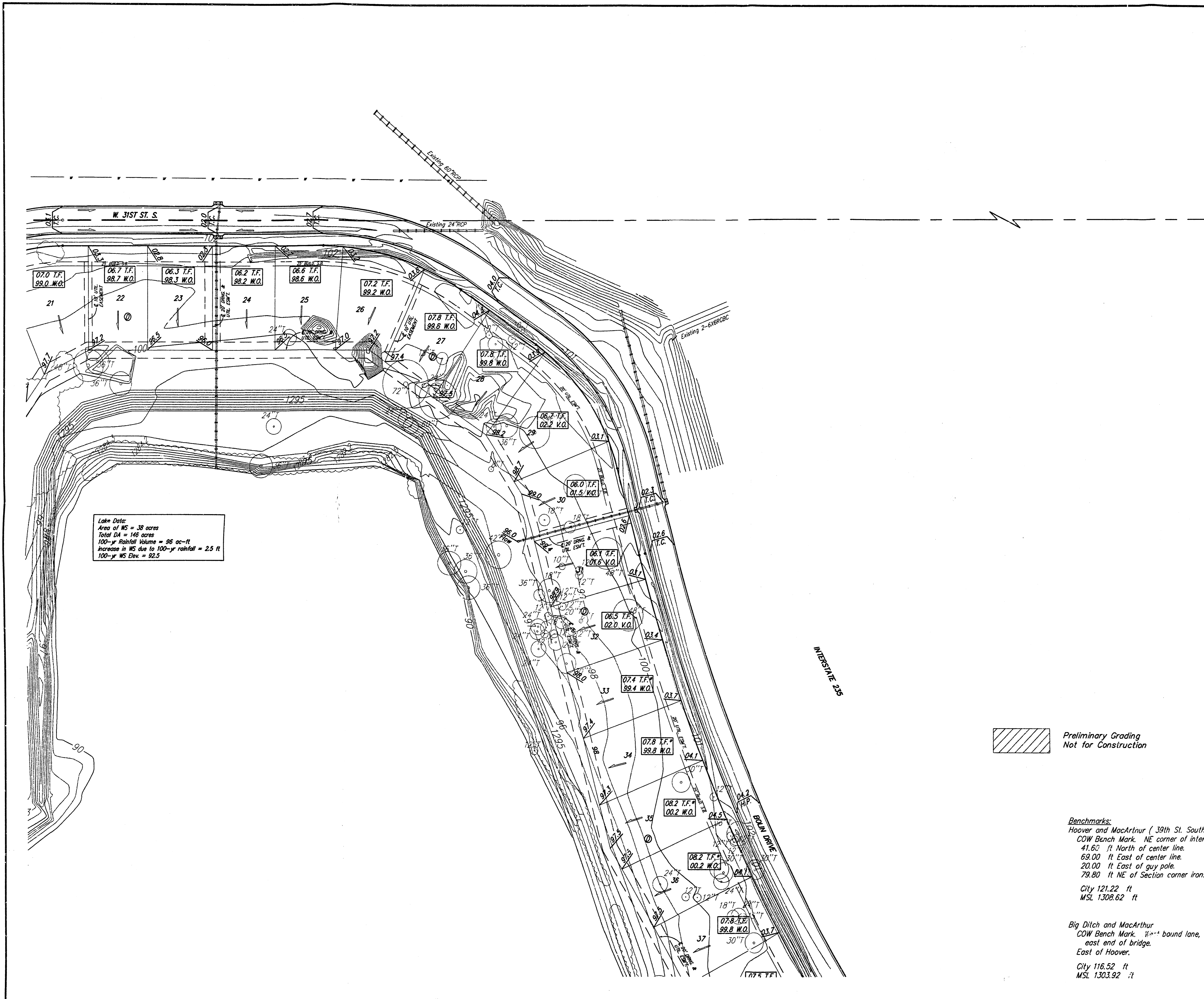
NOTES:
 Proposed Top of Foundation Elevations Are Shown On Plans. Contractor to Set Finished Floor Elevations.
 All Street Elevations Shown on Plans Are for Top of Curb (Full-Height).

This Grading Plan is Designed with View-Out and Walk-Out structures. Elevations for View-Outs are shown as XX.X V.O. Elevations for Walk-Outs are shown as XX.X W.O.

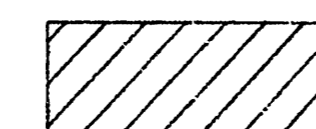
Lot dimensions have been omitted on this plan, refer to the recorded plat for this information.

Lots depicted as XX.X T.F.* indicates that Deep footings or Foundations are required. The deep footing requirement may be waived if the contractor can provide proof that the area has been compacted to a minimum of 95% of optimum density.

BLUE LAKE ADDITION			
GRADING PLAN			
WICHITA, KANSAS			
BAUGHMAN COMPANY P.A.			SHEET 1 OF 9
ENGINEERING, SURVEYING, & PLANNING			
316-262-7271 • 315 ELLIS • WICHITA, KANSAS 67211			
PROJECT NUMBER		SCALE	
DESIGN BLG	DRAWN BLG	APPROVED	DATE 5-03-04

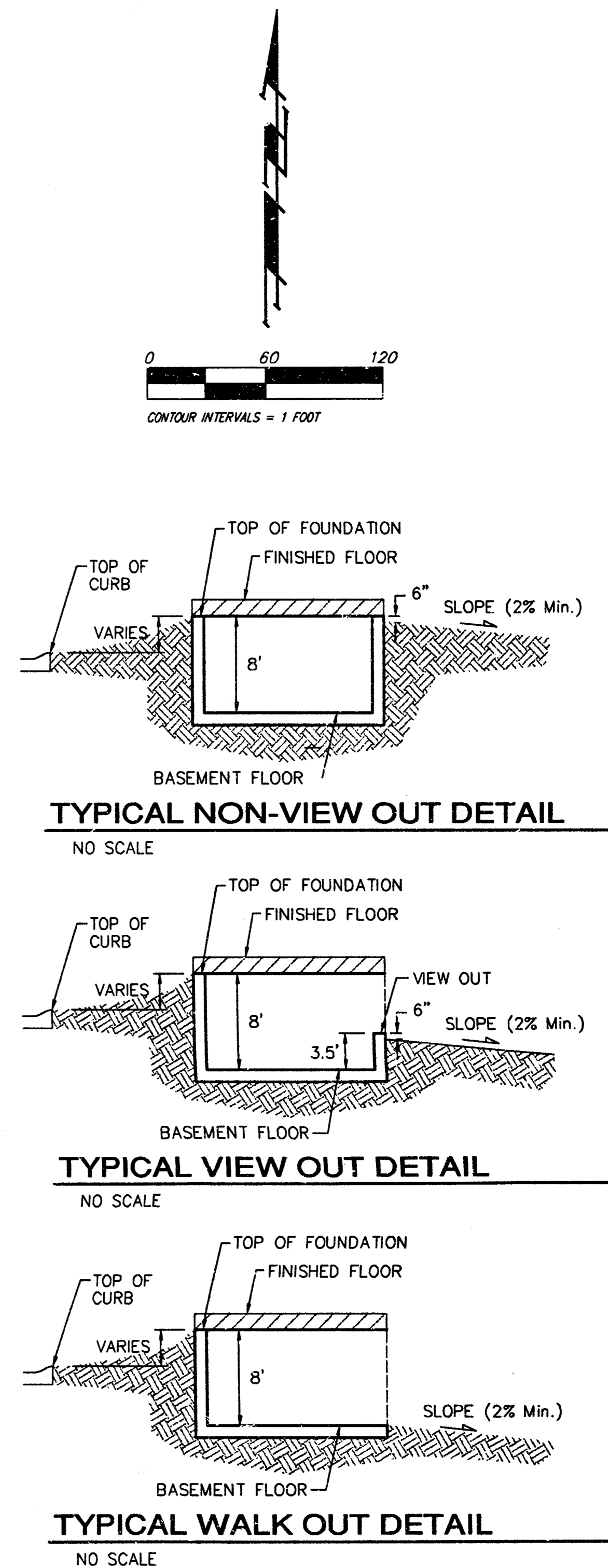


Lake Data:
 Area of WS = 38 acres
 Total DA = 146 acres
 100-yr Rainfall Volume = 96 ac-ft
 Increase in WS due to 100-yr rainfall = 2.5 ft
 100-yr WS Elev. = 92.5

 Preliminary Grading
 Not for Construction

Benchmarks:
 Hoover and MacArthur (39th St. South)
 COW Bench Mark, NE corner of intersection.
 41.60 ft North of center line.
 69.00 ft East of center line.
 20.00 ft East of guy pole.
 79.80 ft NE of Section corner iron.
 City 121.22 ft
 MSL 1308.62 ft

Big Ditch and MacArthur
 COW Bench Mark, 1/2" bound lane,
 east end of bridge,
 East of Hoover.
 City 116.52 ft
 MSL 1303.92 ft

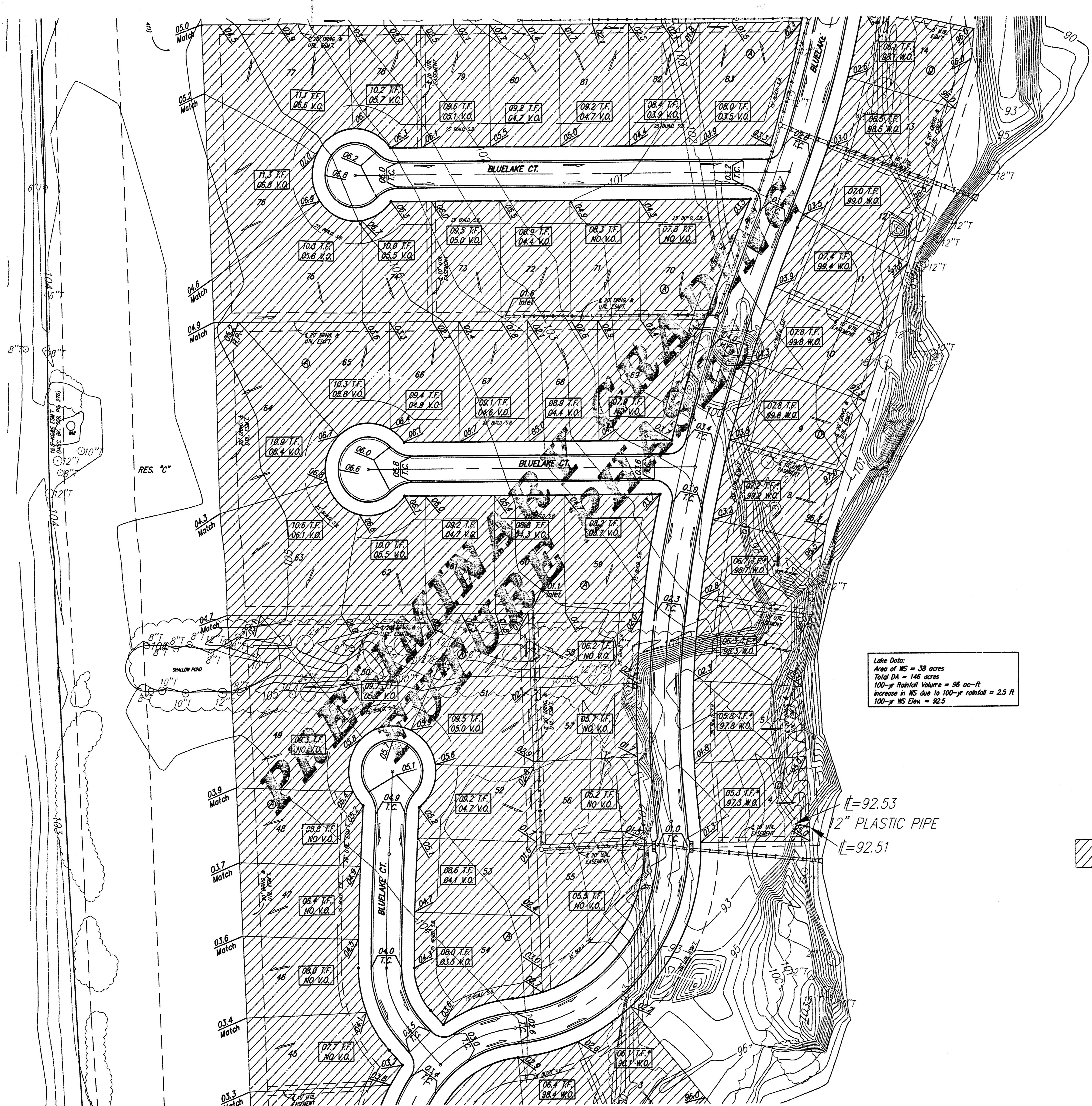


NOTES:
 Proposed Top of Foundation Elevations Are Shown On Plans. Contractor to Set Finished Floor Elevations.
 All Street Elevations Shown on Plans Are for Top of Curb (Full-Height).
 This Grading Plan is Designed with View-Out and Walk-Out structures. Elevations for View-Outs are shown as XXX V.O. Elevations for Walk-Outs are shown as XXX W.O.
 Lot dimensions have been omitted on this plan, refer to the recorded plat for this information.
 Lots depicted as XXX T.F.* indicates that Deep footings or Foundations are required. The deep footing requirement may be waived if the contractor can provide proof that the area has been compacted to a minimum of 95% of optimum density.

BLUE LAKE ADDITION
GRADING PLAN
 WICHITA, KANSAS

BAUGHMAN COMPANY P.A.
 ENGINEERING, SURVEYING, & PLANNING
 316-262-7271 • 315 ELLIS • WICHITA, KANSAS 67211

DESIGN BLG	DRAWN BLG	APPROVED	DATE 5-03-04
PROJECT NUMBER			SHEET 2 OF 9
			SCALE noted



Lake Data:
 Area of BS = 33 acres
 Total DA = 146 acres
 100-yr Rainfall Volume = 85 ac-ft
 Increase in MS due to 100-yr rainfall = 2.5 ft
 100-yr MS Elev. = 92.5

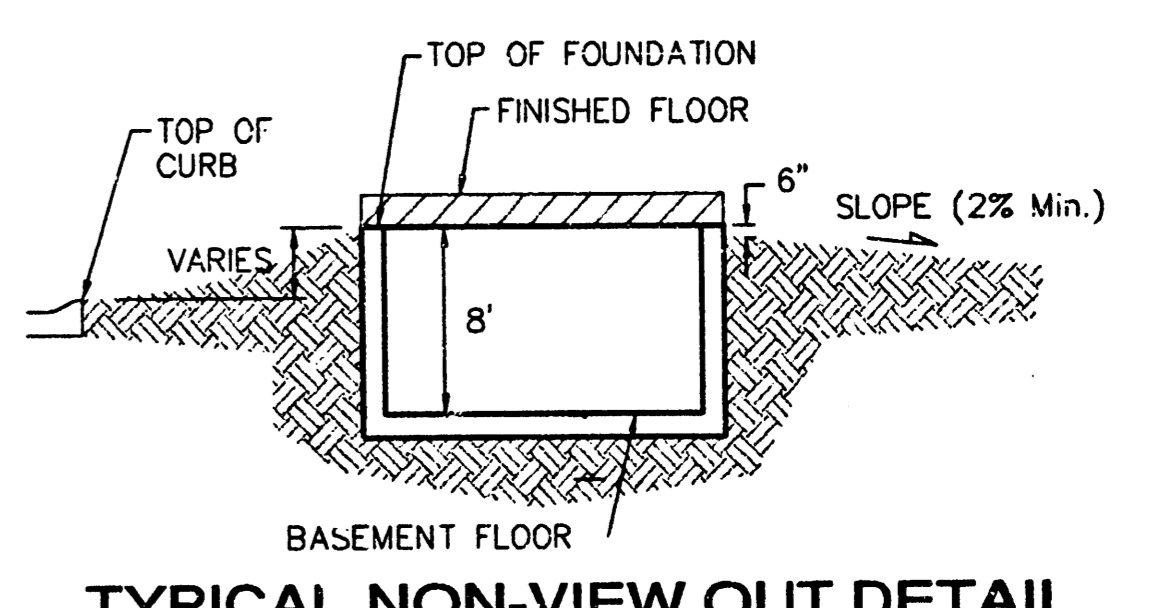
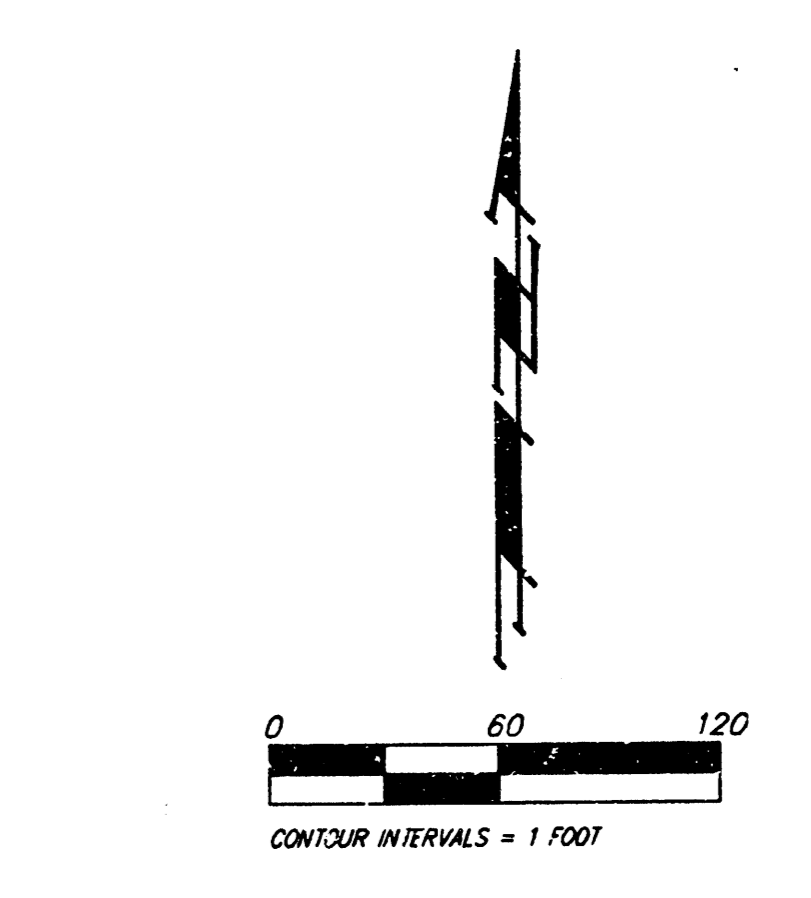
RESERVE "A"

Preliminary Grading
 Not for Construction

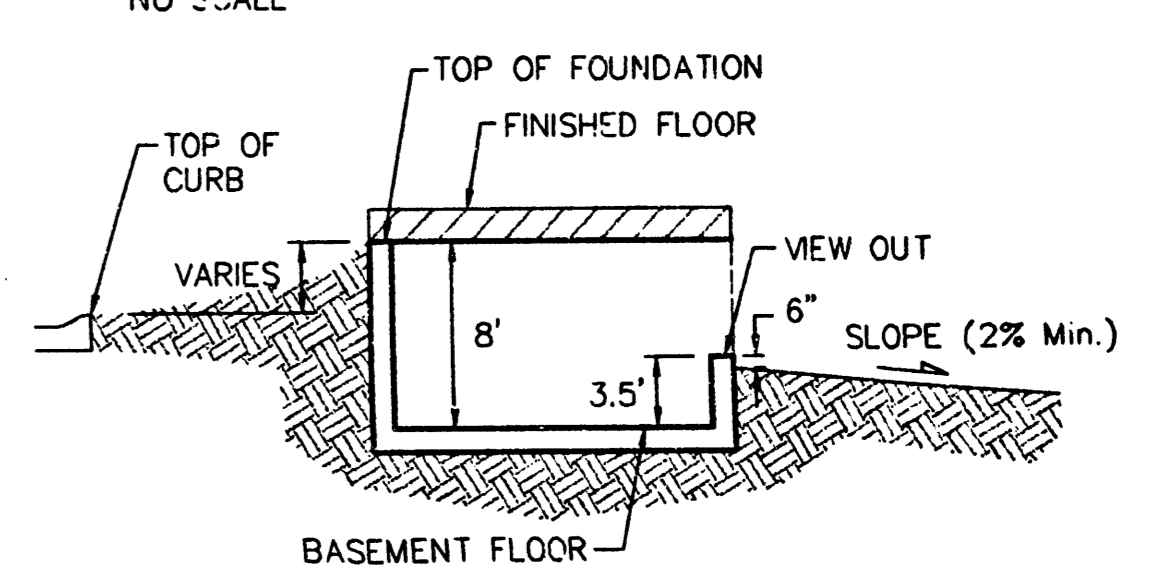
Benchmarks:
 Hoover and MacArthur (.39th St. South)
 COW Bench Mark, NE corner of intersection.
 41.60 ft North of center line.
 69.00 ft East of center line.
 20.00 ft East of guy pole.
 79.80 ft NE of Section corner iron.

City 121.22 ft
 MSL 1308.62 ft

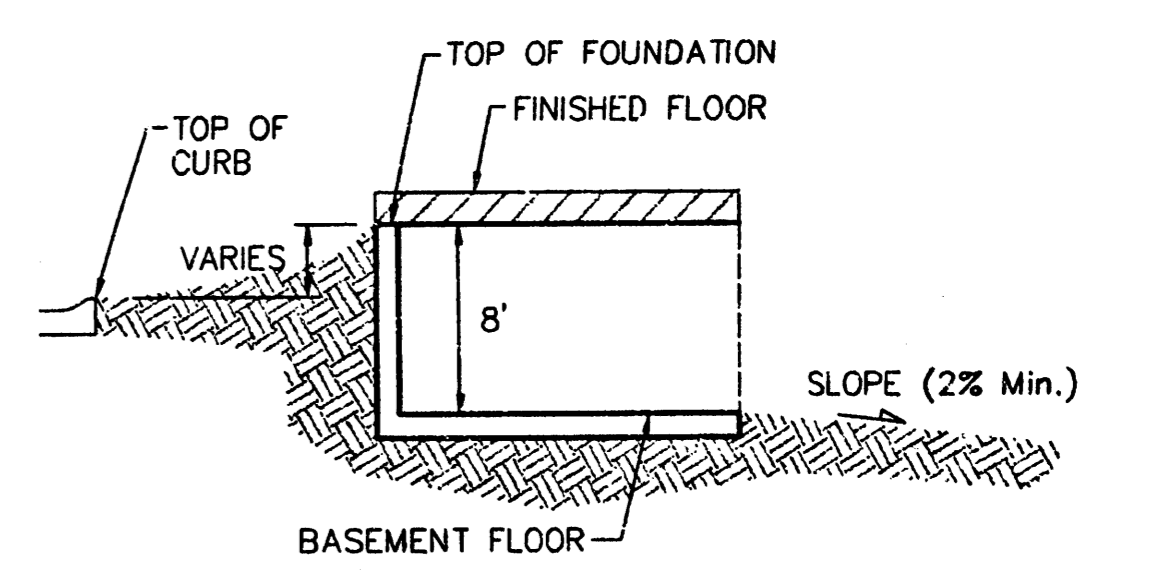
Big Ditch and MacArthur
 COW Bench Mark, West bound lane,
 east end of bridge.
 East of Hoover.
 City 116.52 ft
 MSL 1303.92 ft



TYPICAL NON-VIEW OUT DETAIL
 NO SCALE



TYPICAL VIEW OUT DETAIL
 NO SCALE



TYPICAL WALK OUT DETAIL
 NO SCALE

NOTES:

Proposed Top of Foundation Elevations Are Shown On Plans. Contractor to Set Finished Floor Elevations.

All Street Elevations Shown on Plans Are for Top of Curb (Full-Height).

This Grading Plan is Designed with View-Out and Walk-Out structures. Elevations for View-Outs are shown as XX.X V.O. Elevations for Walk-Outs are shown as XX.X W.O.

Lot dimensions have been omitted on this plan, refer to the recorded plat for this information.

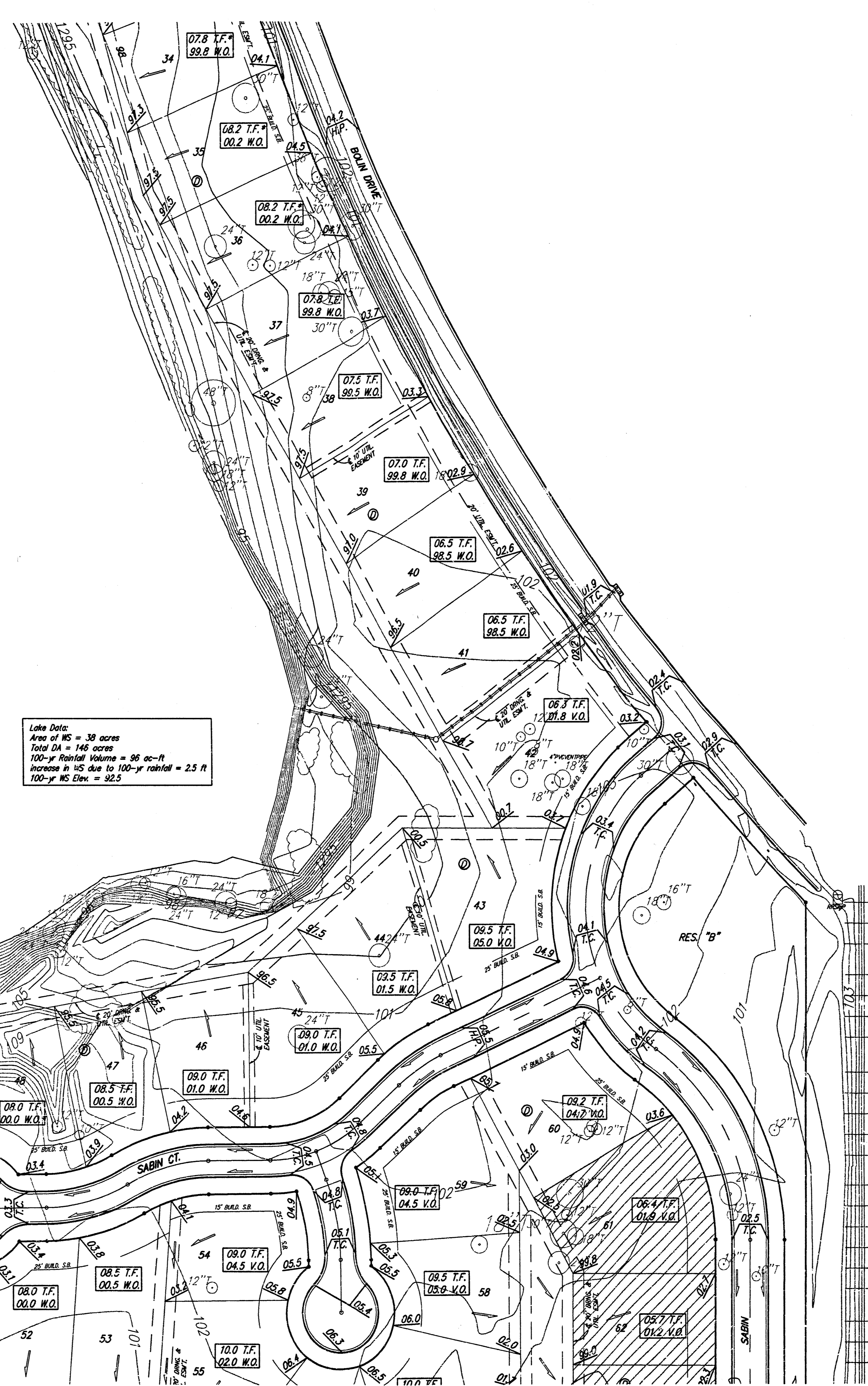
Lots depicted as XX.X T.F.* indicates that Deep footings or Foundations are required. The deep footing requirement may be waived if the contractor can provide proof that the area has been compacted to a minimum of 95% of optimum density.

BLUE LAKE ADDITION
GRADING PLAN
 WICHITA, KANSAS

BAUGHMAN COMPANY P.A.
 ENGINEERING, SURVEYING, & PLANNING
316-262-7271 • 319 ELLIS • WICHITA, KANSAS 67211

PROJECT NUMBER _____ SHEET **3** OF **9**

DESIGN BLG	DRAWN BLG	APPROVED	DATE 5-03-04
			SCALE noted



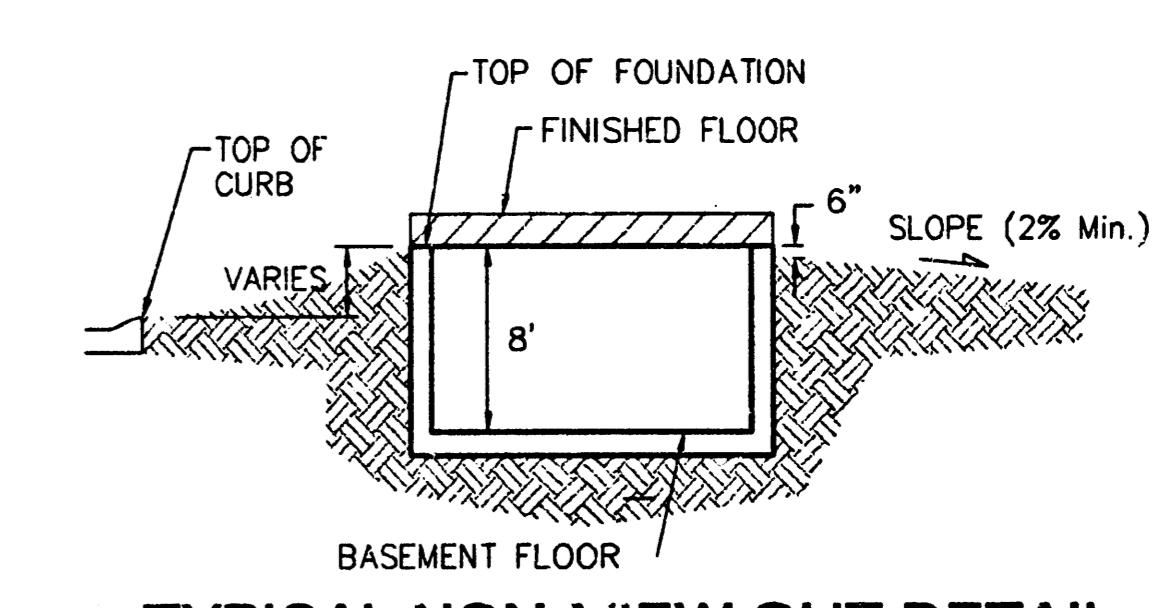
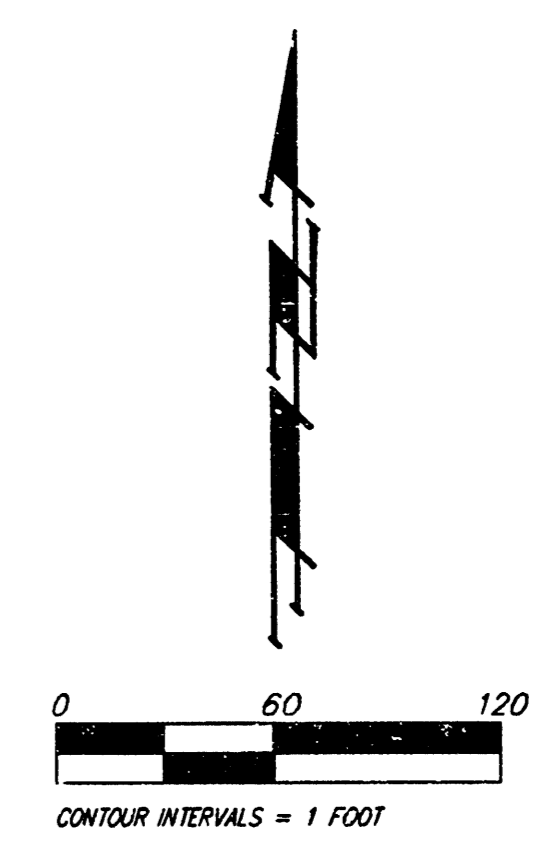
Late Date:
 Area of MS = 39 acres
 Total DA = 146 acres
 100-yr Rainfall Volume = 96 ac-ft
 Increase in MS due to 100-yr rainfall = 2.5 ft
 100-yr MS Elev. = 92.5

RESERVE "A"

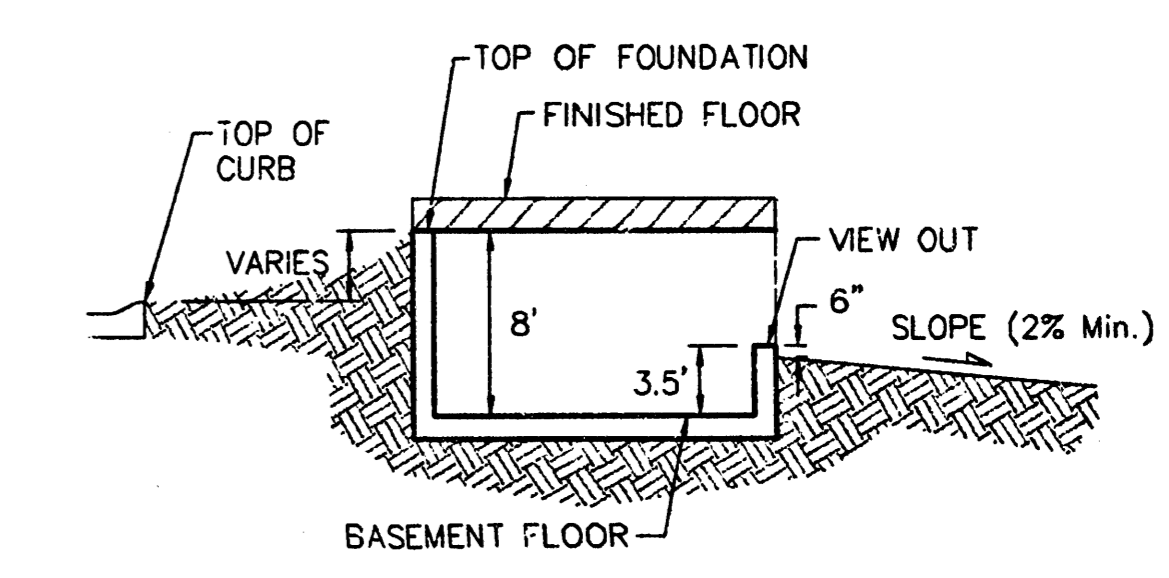
Preliminary Grading
 Not for Construction

Benchmarks:
 Hoover and MacArthur (39th St. South)
 COW Bench Mark, NE corner of intersection.
 41.60 ft North of center line.
 69.00 ft East of center line.
 20.00 ft East of guy pole.
 79.80 ft NE of Section corner iron.
 City 121.22 ft
 MSL 1308.62 ft

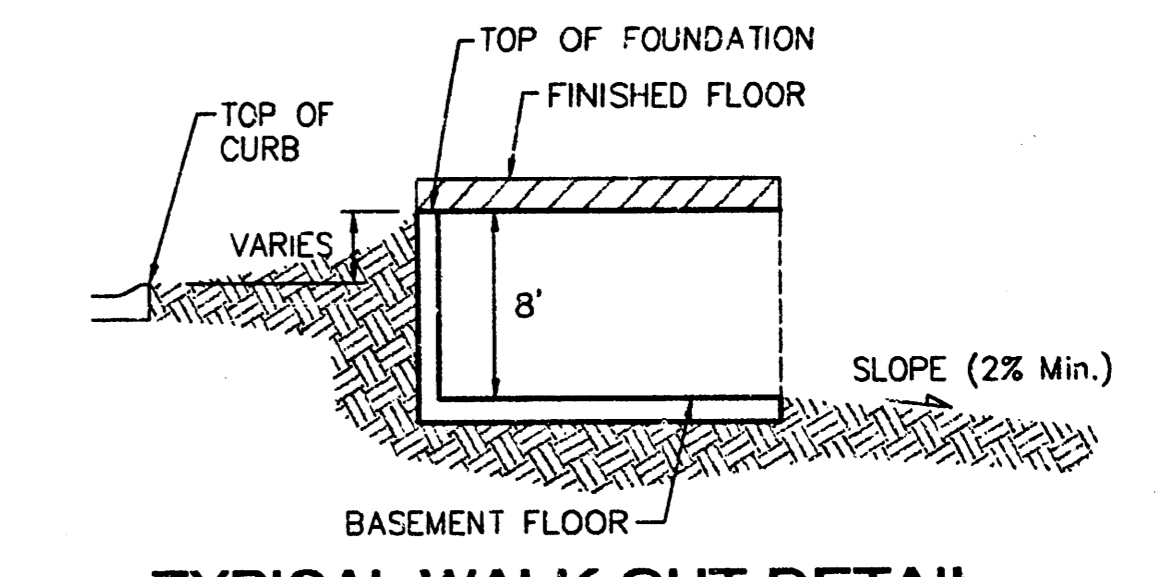
Big Ditch and MacArthur
 COW Bench Mark, West bound lane,
 east end of bridge.
 East of Hoover.
 City 116.52 ft
 MSL 1303.92 ft



TYPICAL NON-VIEW OUT DETAIL
NO SCALE



TYPICAL VIEW OUT DETAIL
NO SCALE



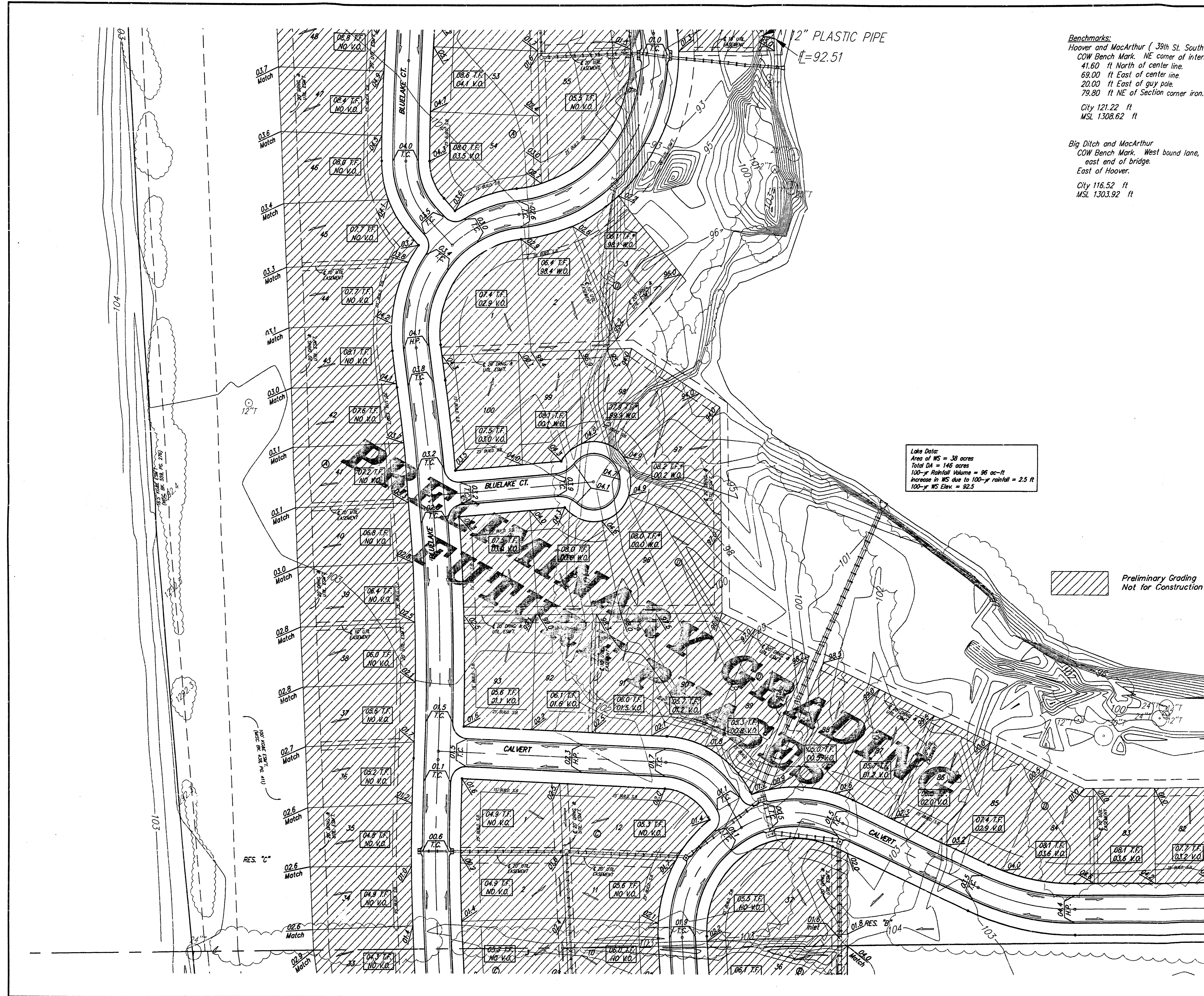
TYPICAL WALK OUT DETAIL
NO SCALE

NOTES:
 Proposed Top of Foundation Elevations Are Shown On Plans. Contractor to Set Finished Floor Elevations.
 All Street Elevations Shown on Plans Are for Top of Curb (Full-Height).
 This Grading Plan is Designed with View-Out and Walk-Out structures. Elevations for View-Outs are shown as XX.X V.O. Elevations for Walk-Outs are shown as XX.X W.O.
 Lot dimensions have been omitted on this plan, refer to the recorded plat for this information.
 Lots depicted as XX.X T.F.* indicates that Deep footings or Foundations are required. The deep footing requirement may be waived if the contractor can provide proof that the area has been compacted to a minimum of 95% of optimum density.

BLUE LAKE ADDITION
GRADING PLAN
 WICHITA, KANSAS

BAUGHMAN COMPANY P.A.
 ENGINEERING, SURVEYING, & PLANNING
 318-282-7271 • 315 ELLIS • WICHITA, KANSAS 67211

DESIGN BLG	DRAWN BLG	APPROVED	DATE 5-03-04
PROJECT NUMBER			SHEET 4 OF 9
			SCALE noted

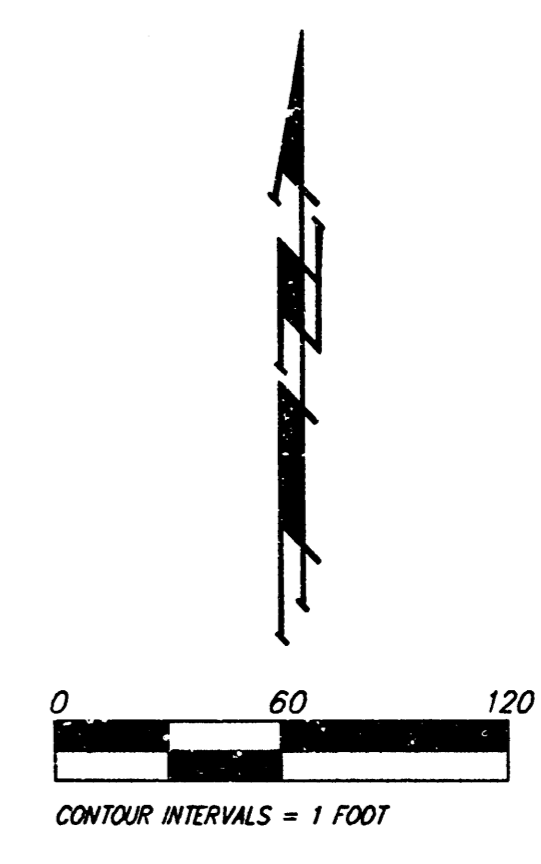


Benchmarks:
 Hoover and MacArthur (39th St. South)
 COW Bench Mark, NE corner of intersection.
 41.60 ft North of center line.
 69.00 ft East of center line.
 20.00 ft East of guy pole.
 79.80 ft NE of Section corner iron.

City 121.22 ft
 MSL 1308.62 ft

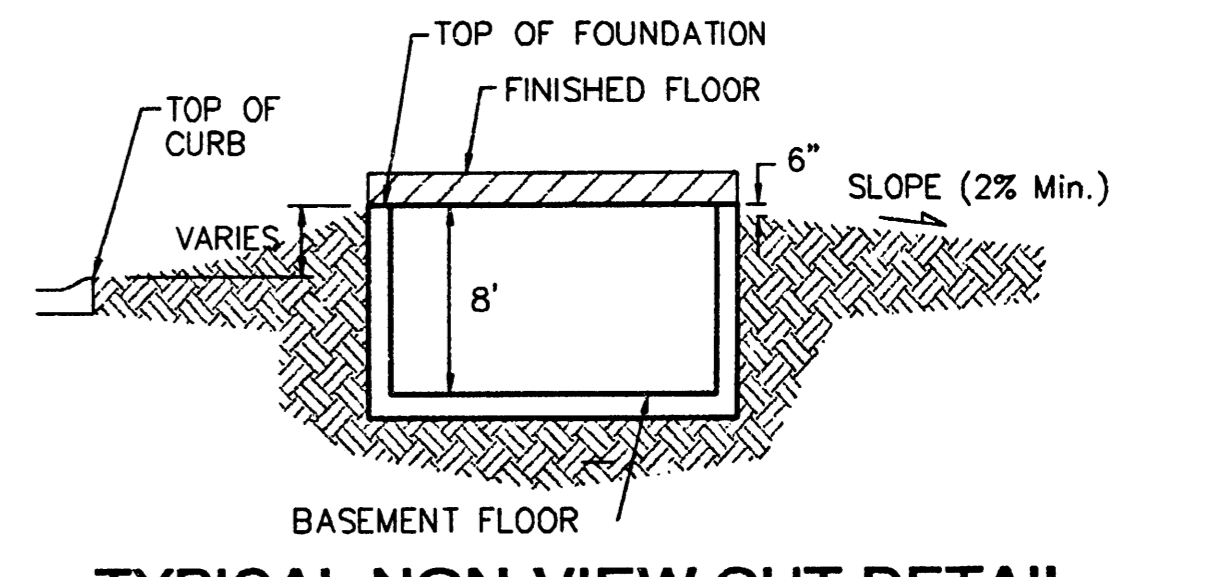
Big Ditch and MacArthur
 COW Bench Mark, West bound lane,
 east end of bridge.
 East of Hoover.

City 116.52 ft
 MSL 1303.92 ft

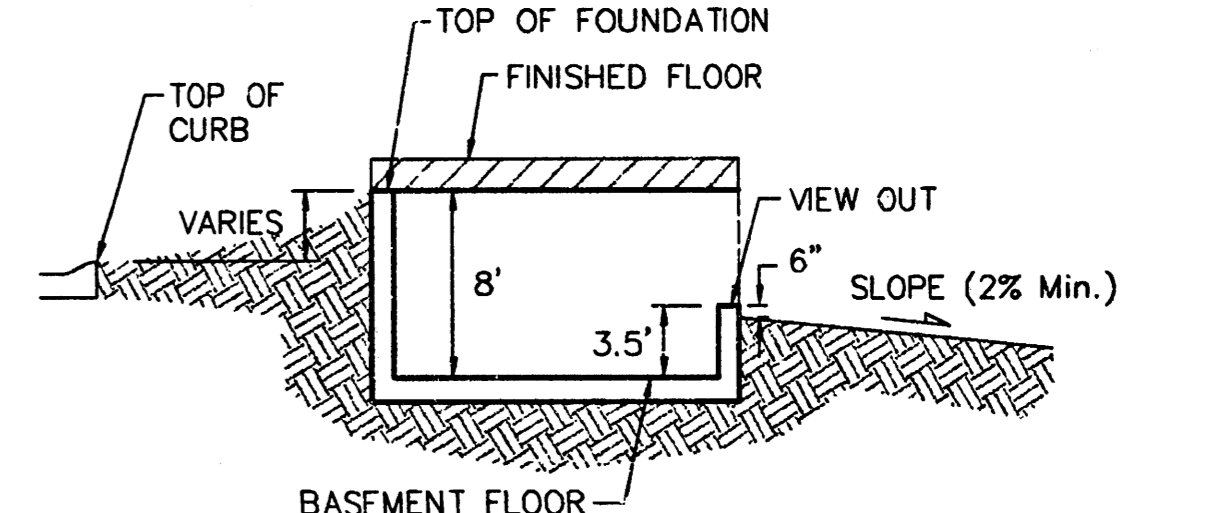


Lake Data:
 Area of WS = 38 acres
 Total DA = 146 acres
 100-yr Rainfall Volume = 96 ac-ft
 Increase in WS due to 100-yr rainfall = 2.5 ft
 100-yr WS Elev. = 92.5

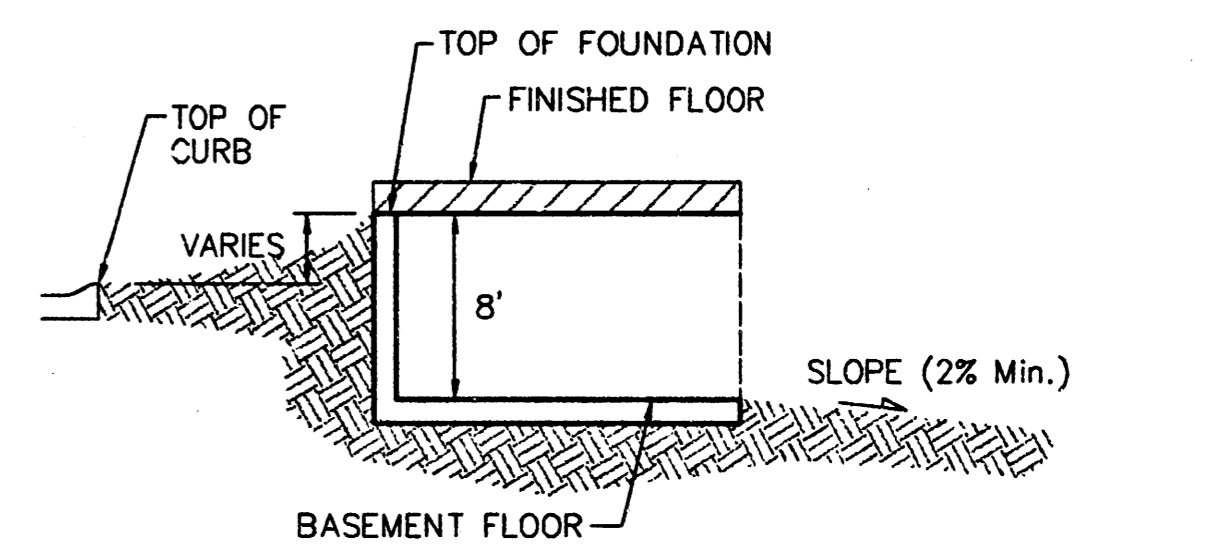
Preliminary Grading
 Not for Construction



TYPICAL NON-VIEW OUT DETAIL
 NO SCALE



TYPICAL VIEW OUT DETAIL
 NO SCALE



TYPICAL WALK OUT DETAIL
 NO SCALE

NOTES:
 Proposed Top of Foundation Elevations Are Shown On Plans. Contractor to Set Finished Floor Elevations.
 All Street Elevations Shown on Plans are for Top of Curb (Full-Height).
 This Grading Plan is Designed with View-Out and Walk-Out structures. Elevations for View-Outs are shown as XX.X V.O. Elevations for Walk-Outs are shown as XX.X W.O.
 Lot dimensions have been omitted on this plan, refer to the recorded plat for this information.
 Lots depicted as XX.X T.F.* indicates that Deep Footings or Foundations are required. The deep footing requirement may be waived if the contractor can provide proof that the area has been compacted to a minimum of 95% of optimum density.

**BLUE LAKE ADDITION
 GRADING PLAN
 WICHITA, KANSAS**

BAUGHMAN COMPANY P.A.
 ENGINEERING, SURVEYING, & PLANNING
 316-262-7271 • 315 ELLIS • WICHITA, KANSAS 67211

DESIGN BLG	DRAWN BLG	APPROVED	DATE 5-03-04
			SCALE noted
PROJECT NUMBER			SHEET 5
			OF 9

BPC-grading.dwg

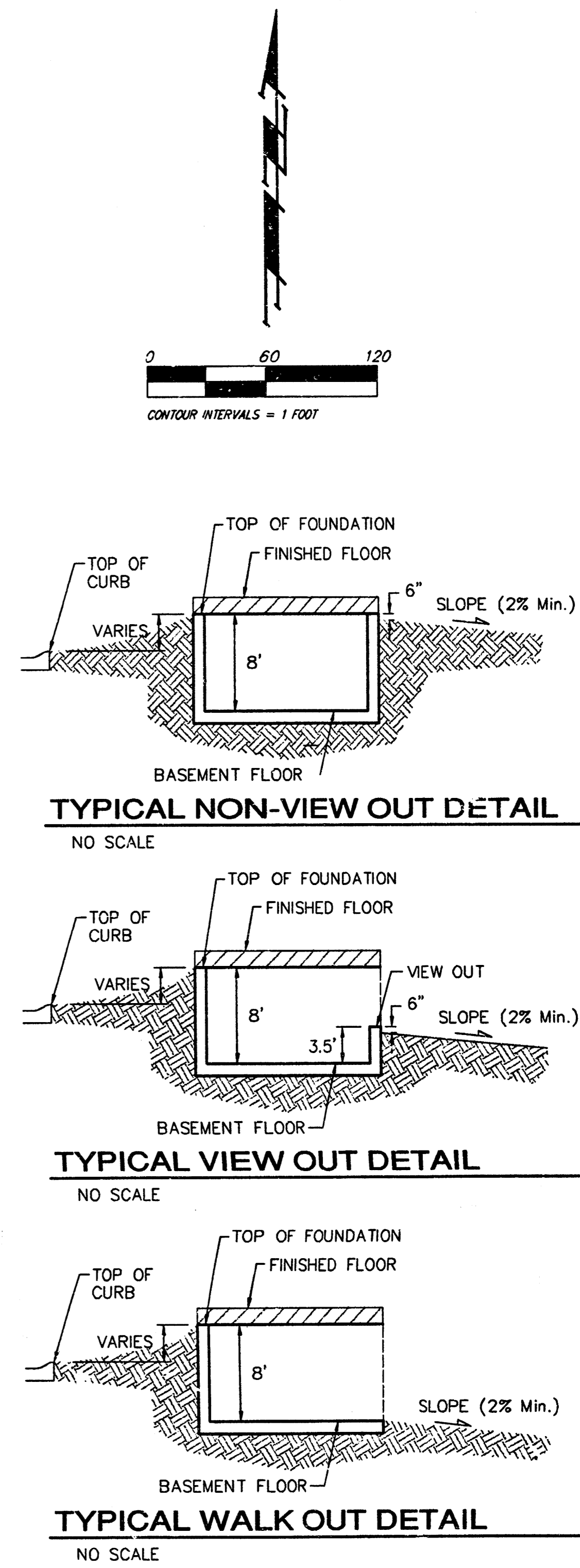
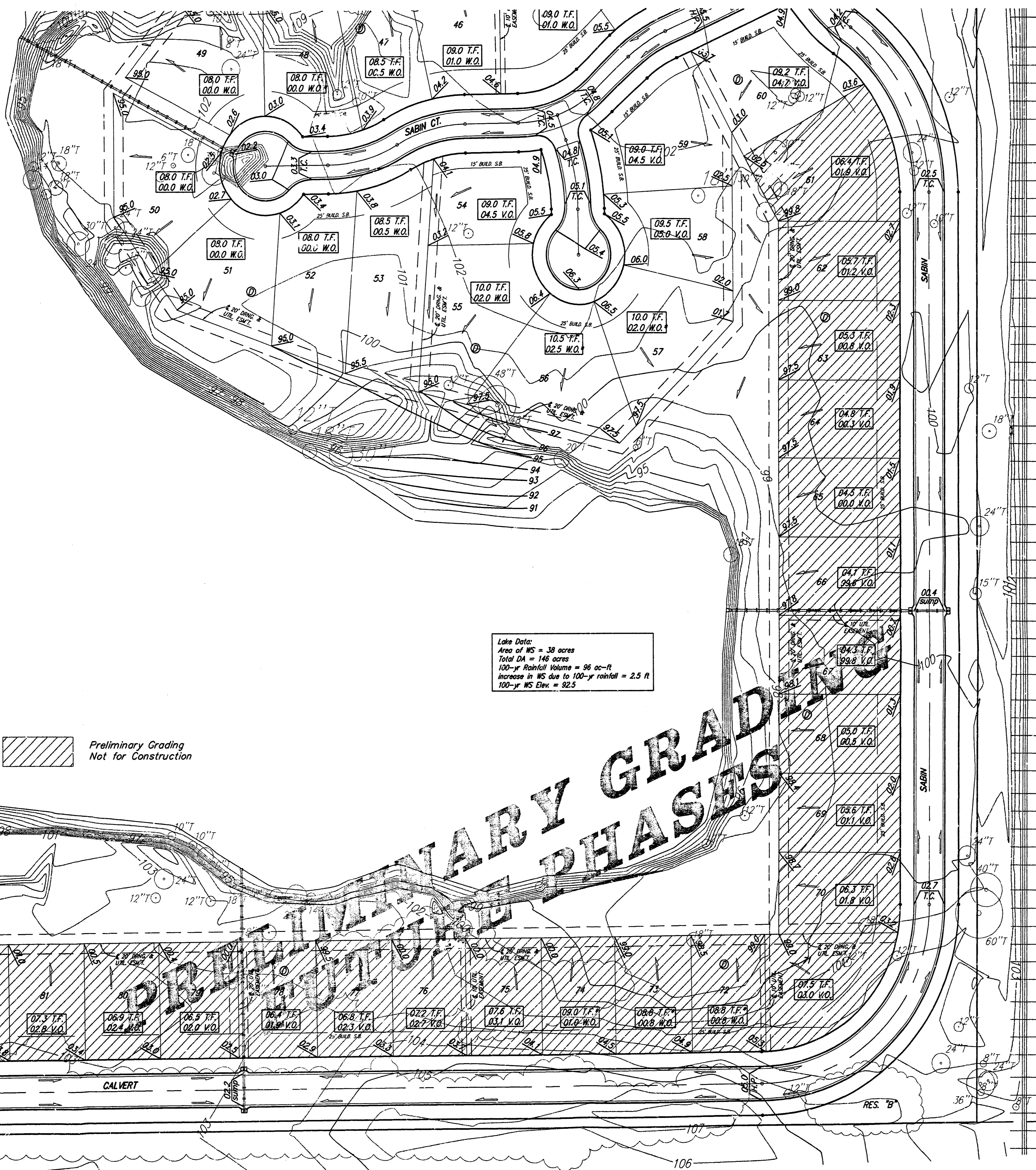
Benchmarks:
 Hoover and MacArthur (39th St. South)
 COW Bench Mark, NE corner of intersection.
 41.60 ft North of center line.
 69.00 ft East of center line.
 20.00 ft East of guy pole.
 79.90 ft NE of Section corner iron.
 City 121.22 ft
 MSL 1308.62 ft

Big Ditch and MacArthur
 COW Bench Mark, West bound lane,
 east end of bridge.
 East of Hoover.
 City 116.52 ft
 MSL 1303.92 ft

cores
 res
 size = 96 ac-ft
 to 100-yr rainfall = 2.5 ft
 92.5

Lake Data:
 Area of WS = 38 acres
 Total DA = 146 acres
 100-yr Rainfall Volume = 96 ac-ft
 increase in WS due to 100-yr rainfall = 2.5 ft
 100-yr WS Elev. = 92.5

 Preliminary Grading
 Not for Construction



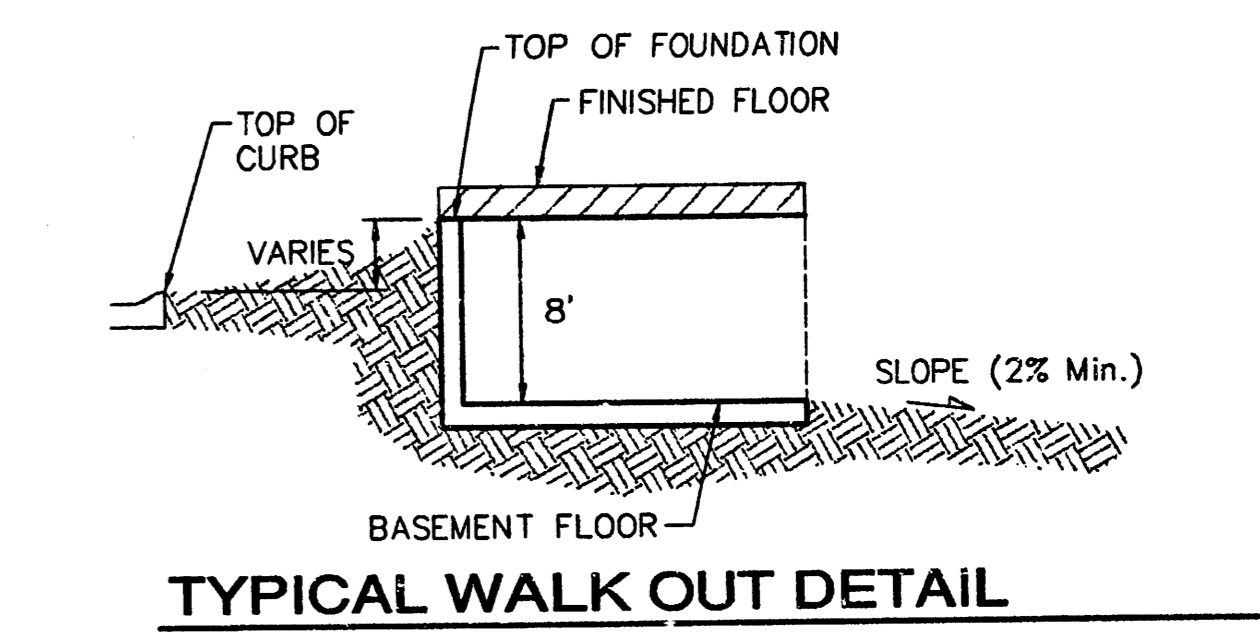
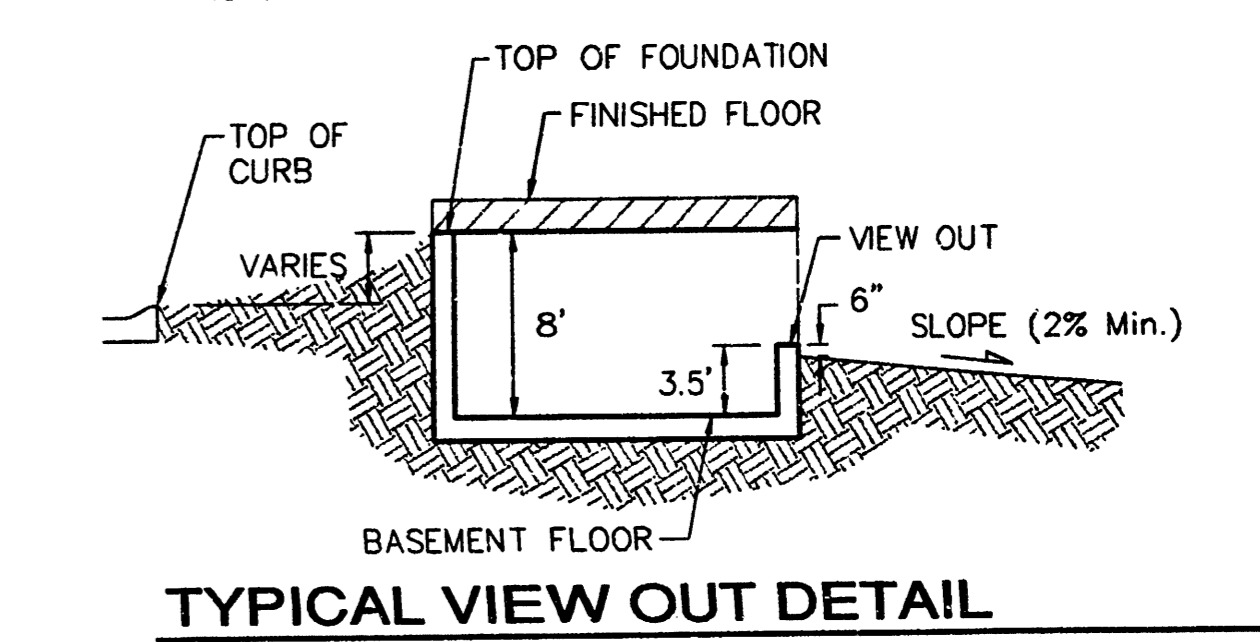
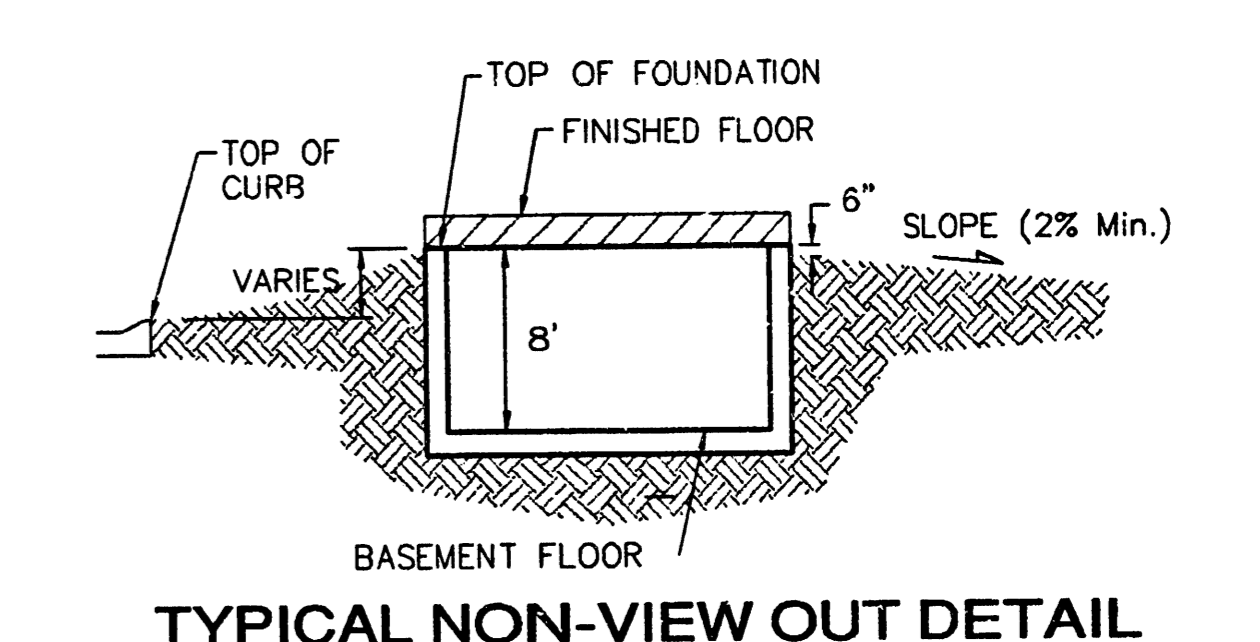
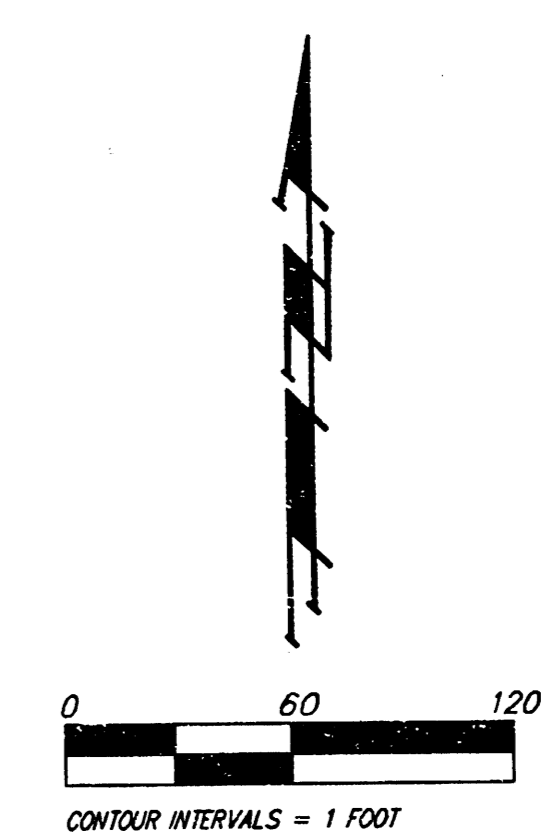
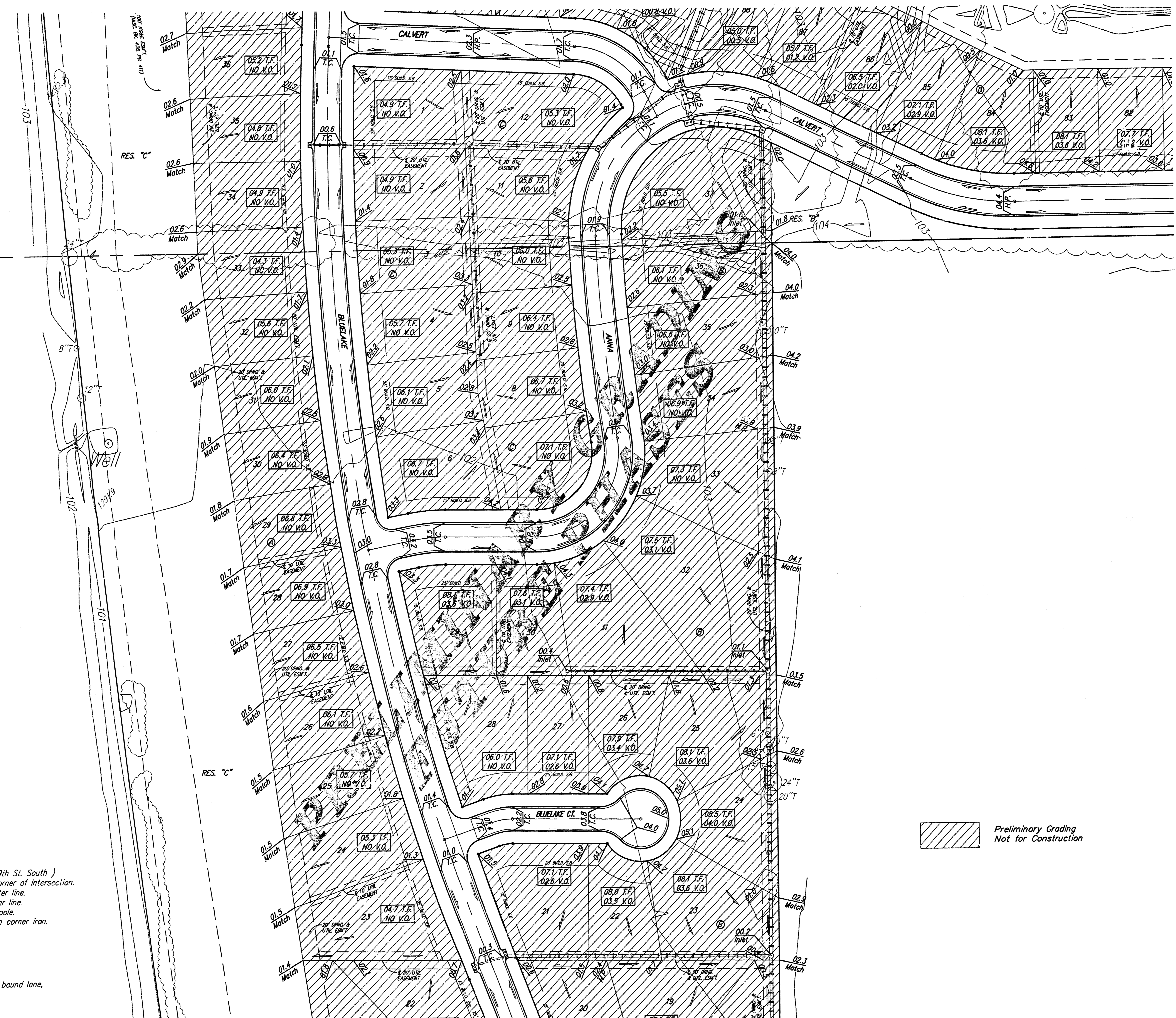
NOTES:
 Proposed Top of Foundation Elevations Are Shown On Plans. Contractor to Set Finished Floor Elevations.
 All Street Elevations Shown on Plans are for Top of Curb (Full-Height).
 This Grading Plan is Designed with View-Out and Walk-Out structures. Elevations for View-Outs are shown as XX.X V.O. Elevations for Walk-Outs are shown as XX.X W.O.
 Lot dimensions have been omitted on this plan, refer to the recorded plat for this information.
 Lots depicted as XX.X T.F.* indicates that Deep footings or Foundations are required. The deep footing requirement may be waived if the contractor can provide proof that the area has been compacted to a minimum of 95% of optimum density.

BLUE LAKE ADDITION
GRADING PLAN
 WICHITA, KANSAS

BAUGHMAN COMPANY P.A.
 ENGINEERING, SURVEYING, & PLANNING
 318-262-7271 • 315 ELLIS • WICHITA, KANSAS 67211

DESIGN BLG	DRAWN BLG	APPROVED	DATE 7-03-04	SCALE noted	SHEET 6 OF 9
---------------	--------------	----------	-----------------	----------------	-----------------------

pre-grades.dwg



NOTES:
Proposed Top of Foundation Elevations Are Shown On Plans. Contractor to Set Finished Floor Elevations.
All Street Elevations Shown on Plans Are for Top of Curb (Full-Height).
This Grading Plan is Designed with View-Out and Walk-Out structures. Elevations for View-Outs are shown as XXX V.O. Elevations for Walk-Outs are shown as XXX W.O.
Lot dimensions have been omitted on this plan, refer to the recorded plat for this information.
Lots depicted as XXX T.F.* indicates that Deep footings or Foundations are required. The deep footing requirement may be waived if the contractor can provide proof that the area has been compacted to a minimum of 95% of optimum density.

Preliminary Grading
Not for Construction

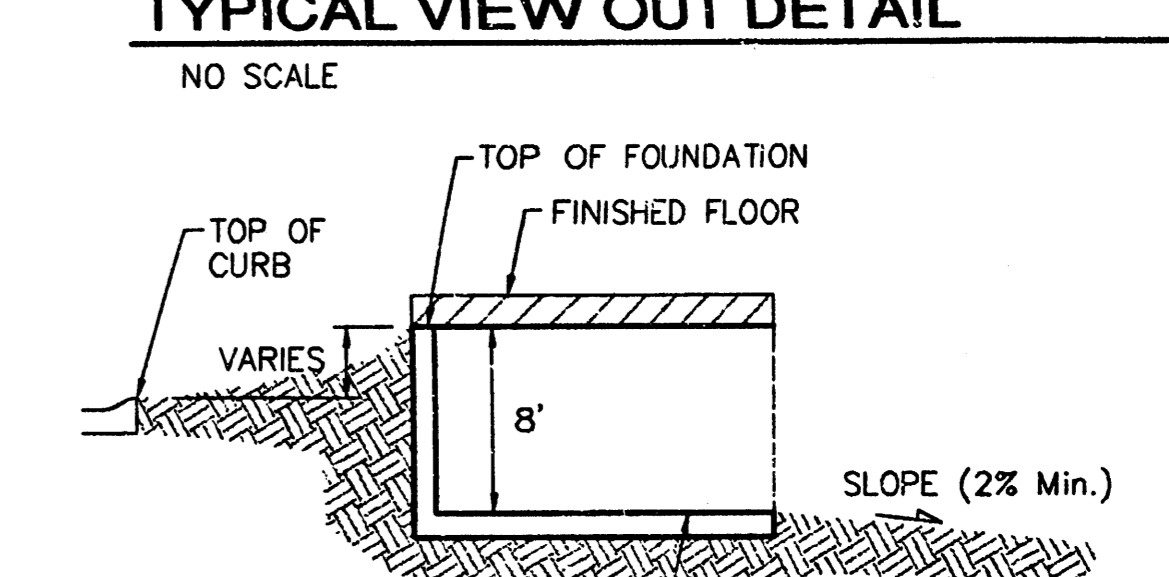
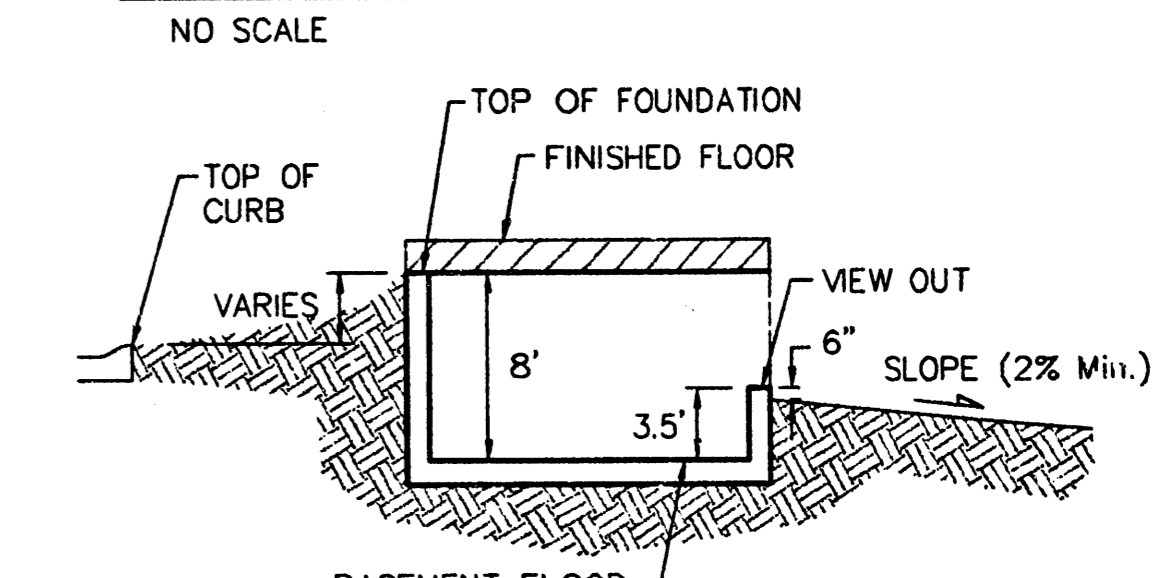
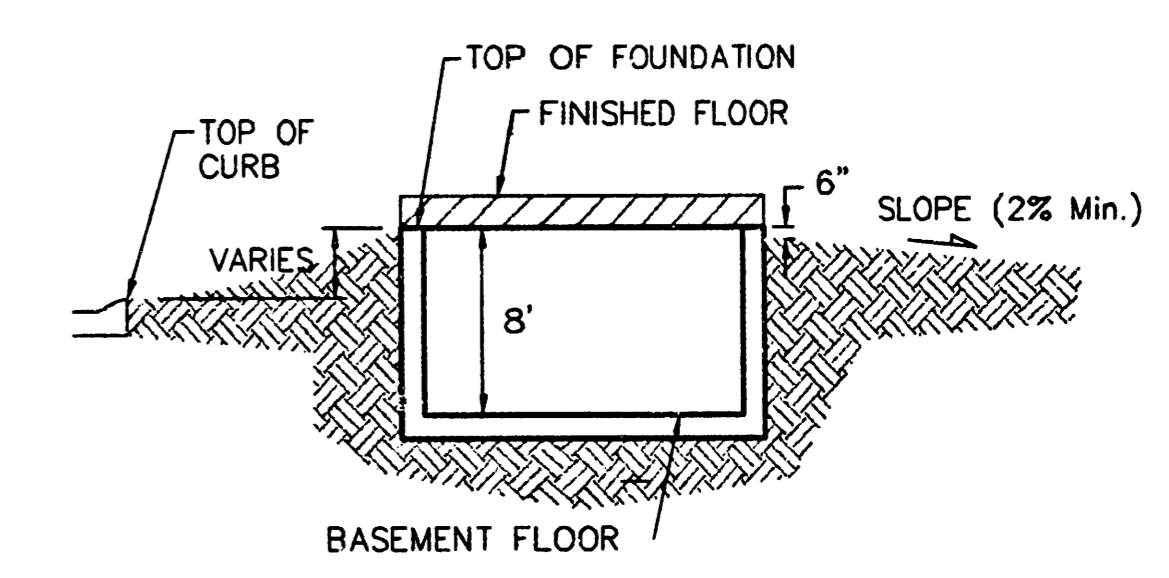
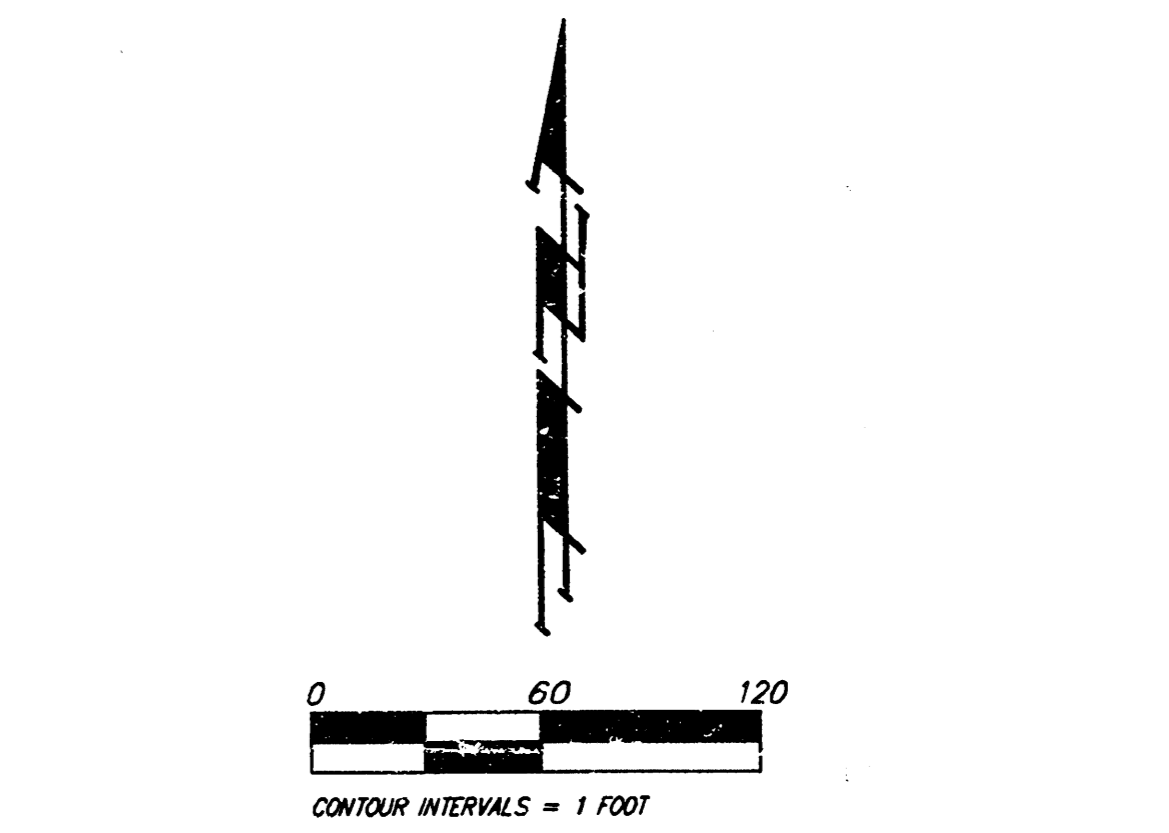
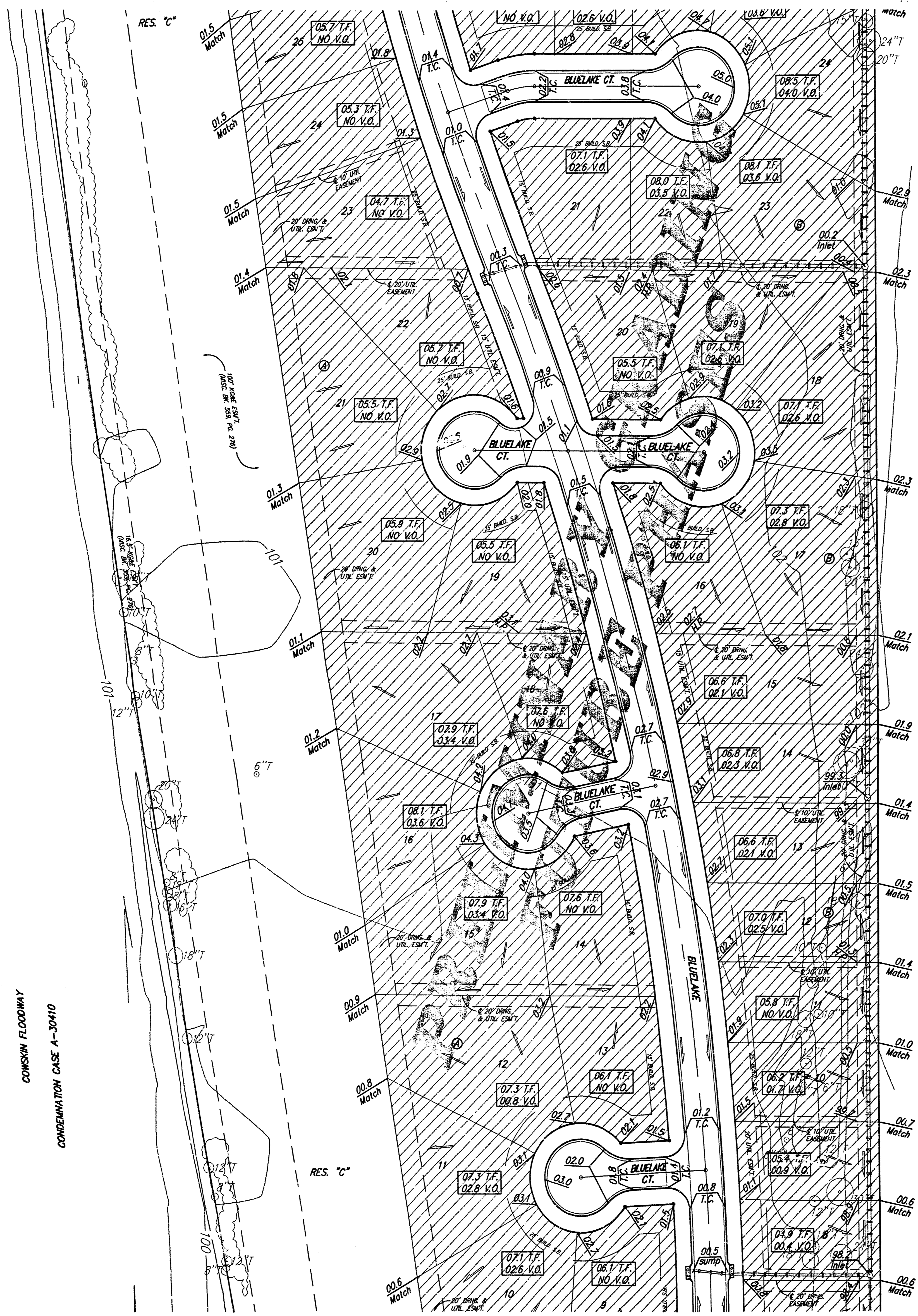
Benchmarks:
Hoover and MacArthur (.39th St. South)
COW Bench Mark, NE corner of intersection.
41.60 ft North of center line.
69.00 ft East of center line.
20.00 ft East of guy pole.
79.80 ft NE of Section corner iron.
City 121.22 ft
MSL 1308.62 ft

Big Ditch and MacArthur
COW Bench Mark, West bound lane,
east end of bridge.
East of Hoover.
City 116.52 ft
MSL 1303.92 ft

BLUE LAKE ADDITION			
GRADING PLAN			
WICHITA, KANSAS			
BAUGHMAN COMPANY P.A.		ENGINEERING, SURVEYING, & PLANNING	
318-262-7271 • 315 ELLIS • WICHITA, KANSAS 67211		PROJECT NUMBER	
DESIGN BLG	DRAWN BLG	APPROVED	DATE 5-03-04
		SCALE noted	SHEET 7 OF 8

Benchmarks:
 Hoover and MacArthur (39th St. South)
 COW Bench Mark. NE corner of intersection.
 41.60 ft North of center line.
 69.00 ft East of center line.
 20.00 ft East of guy pole.
 79.80 ft NE of Section corner iron.
 City 121.22 ft
 MSL 1308.62 ft

Big Ditch and MacArthur
 COW Bench Mark. West bound lane,
 east end of bridge.
 East of Hoover.
 City 116.52 ft
 MSL 1303.92 ft



NOTES:
 Proposed Top of Foundation Elevations Are Shown On Plans. Contractor to Set Finished Floor Elevations.
 All Street Elevations Shown on Plans Are for Top of Curb (Full-Height).
 This Grading Plan is Designed with View-Out and Walk-Out structures. Elevations for View-Outs are shown as XX.X V.O. Elevations for Walk-Outs are shown as XX.X W.O.
 Lot dimensions have been omitted on this plan, refer to the recorded plat for this information.
 Lots depicted as XX.X T.F.* indicates that Deep footings or Foundations are required. The deep footing requirement may be waived if the contractor can provide proof that the area has been compacted to a minimum of 95% of optimum density.

Preliminary Grading
 Not for Construction

BLUE LAKE ADDITION
GRADING PLAN
 WICHITA, KANSAS

BAUGHMAN COMPANY P.A.
 ENGINEERING, SURVEYING, & PLANNING
 316-262-7271 • 315 ELLIS • WICHITA, KANSAS 67211

PROJECT NUMBER _____ SHEET **8** OF **9**

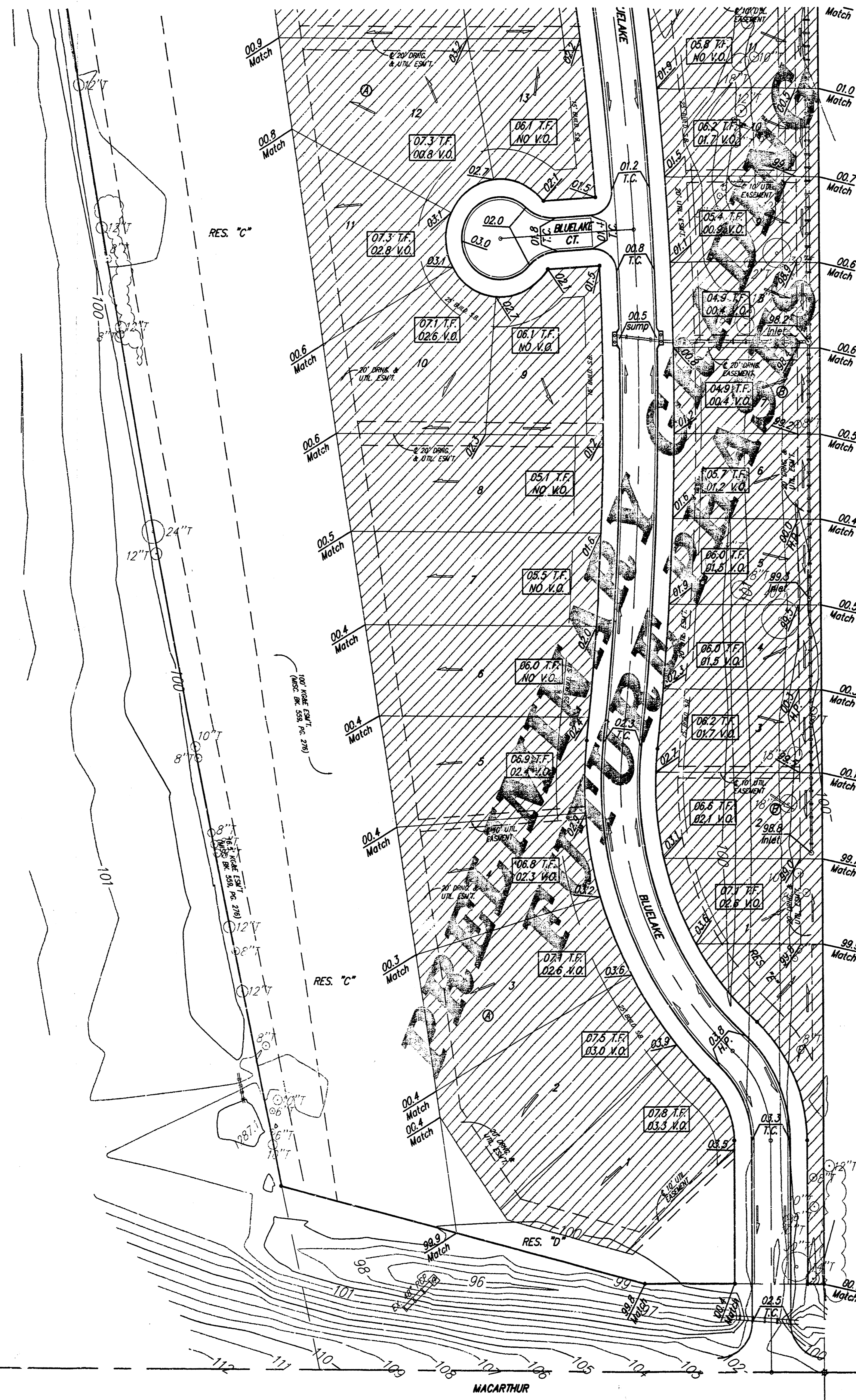
DESIGN B.L.C.	DRAWN B.L.C.	APPROVED	DATE 5-03-04
		SCALE noted	

CONKIN FLOODWAY
 CONDEMNATION CASE A-30410

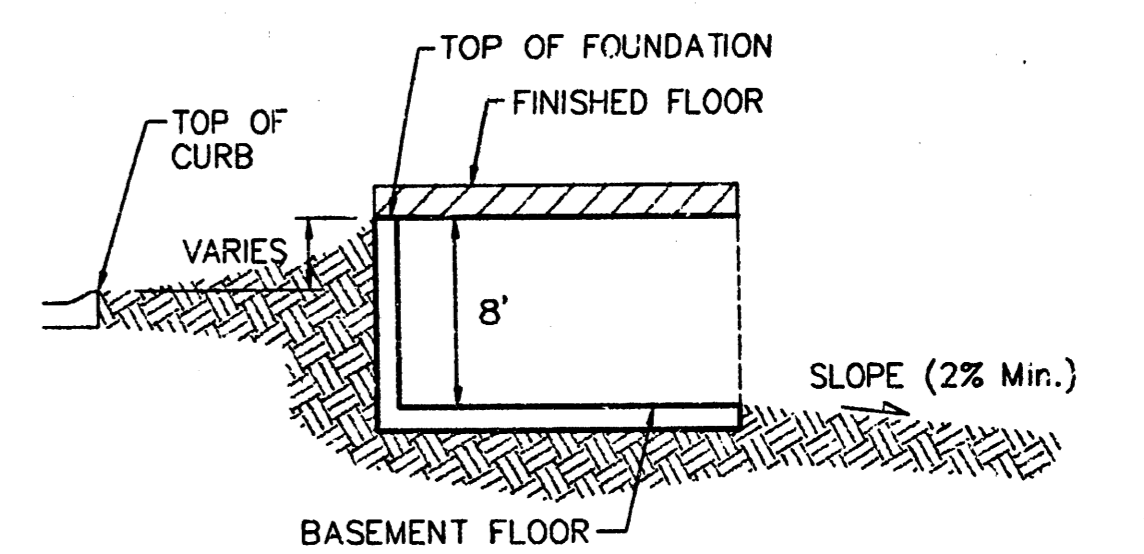
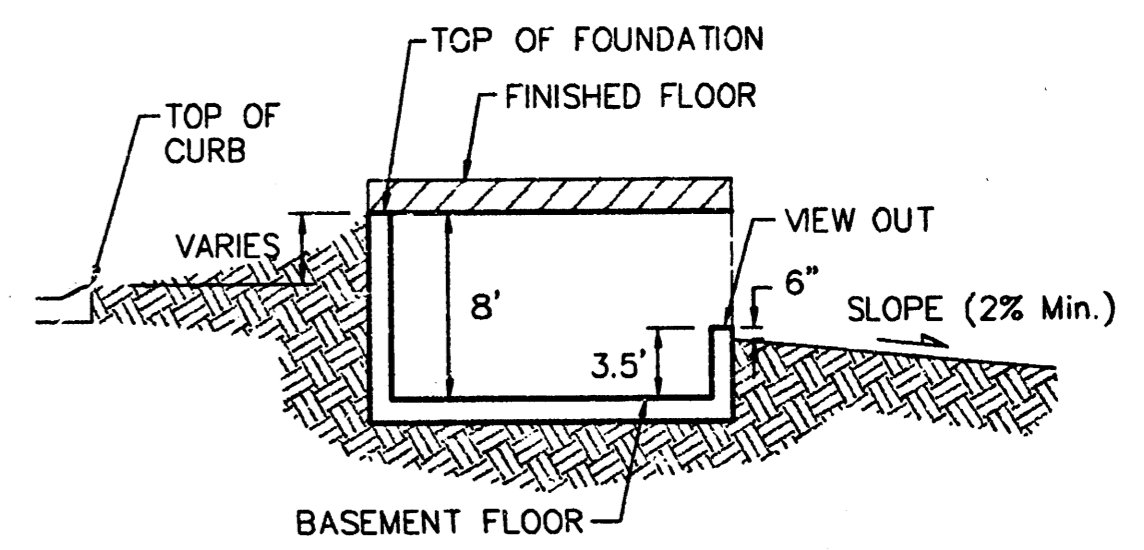
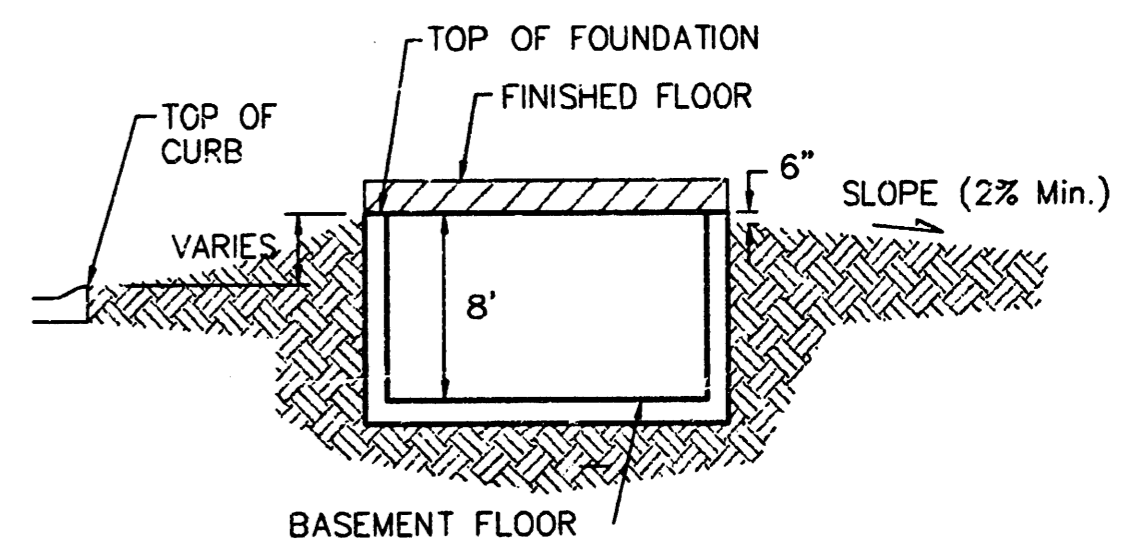
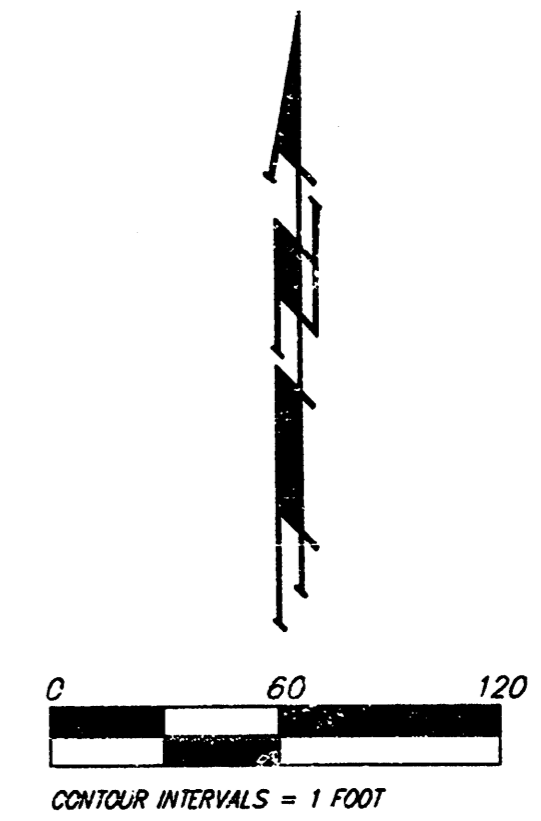
Benchmarks:
 Hoover and MacArthur (.39th St. South)
 COW Bench Mark, NE corner of intersection.
 41.60 ft North of center line.
 69.00 ft East of center line.
 20.00 ft East of guy pole.
 79.80 ft NE of Section corner iron.
 City 121.22 ft
 MSL 1308.62 ft

Big Ditch and MacArthur
 COW Bench Mark, West bound lane,
 east end of bridge.
 East of Hoover.
 City 116.52 ft
 MSL 1303.92 ft

CONSERVATION FLOODWAY
 CONDEMNATION CASE A-30410



 Preliminary Grading
 Not for Construction



NOTES:
 Proposed Top of Foundation Elevations Are Shown On Plans. Contractor to Set Finished Floor Elevations.
 All Street Elevations Shown on Plans are for Top of Curb (Full-Height).
 This Grading Plan is Designed with View-Out and Walk-Out structures. Elevations for View-Outs are shown as XXX V.O. Elevations for Walk-Outs are shown as XXX W.O.
 Lot dimensions have been omitted on this plan, refer to the recorded plat for this information.
 Lots depicted as XXX T.F.* indicates that Deep footings or Foundations are required. The deep footing requirement may be waived if the contractor can provide proof that the area has been compacted to a minimum of 95% of optimum density.

BLUE LAKE ADDITION
GRADING PLAN
 WICHITA, KANSAS

BAUGHMAN COMPANY P.A.
 ENGINEERING, SURVEYING, & PLANNING
 318-282-7271 • 315 ELLIS • WICHITA, KANSAS 67211

DESIGN BLG	DRAWN BLG	APPROVED	DATE 5-03-04	SCALE noted	SHEET 9 OF 9
---------------	--------------	----------	-----------------	----------------	-------------------------------------

pre-9-0406.dwg