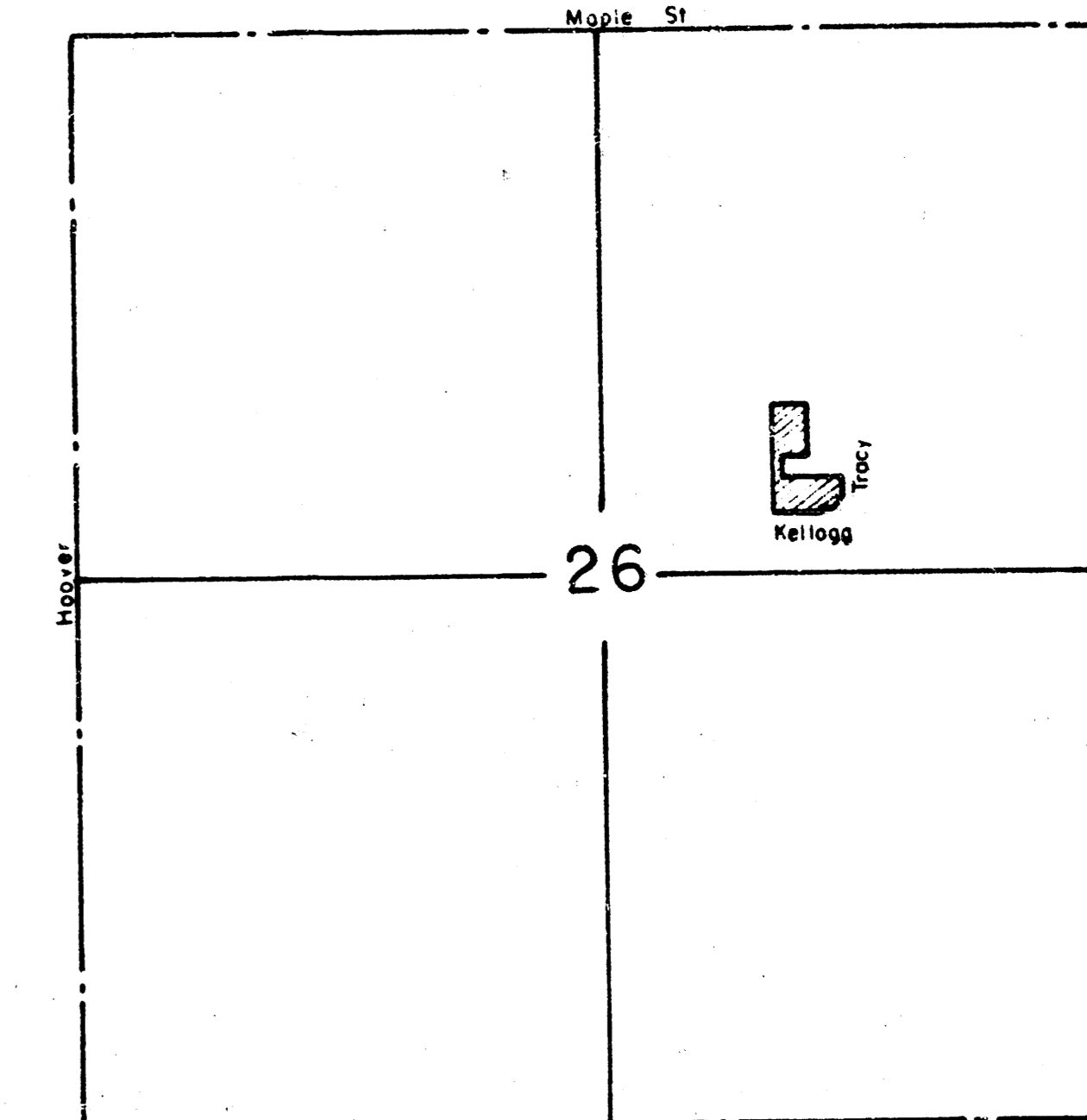


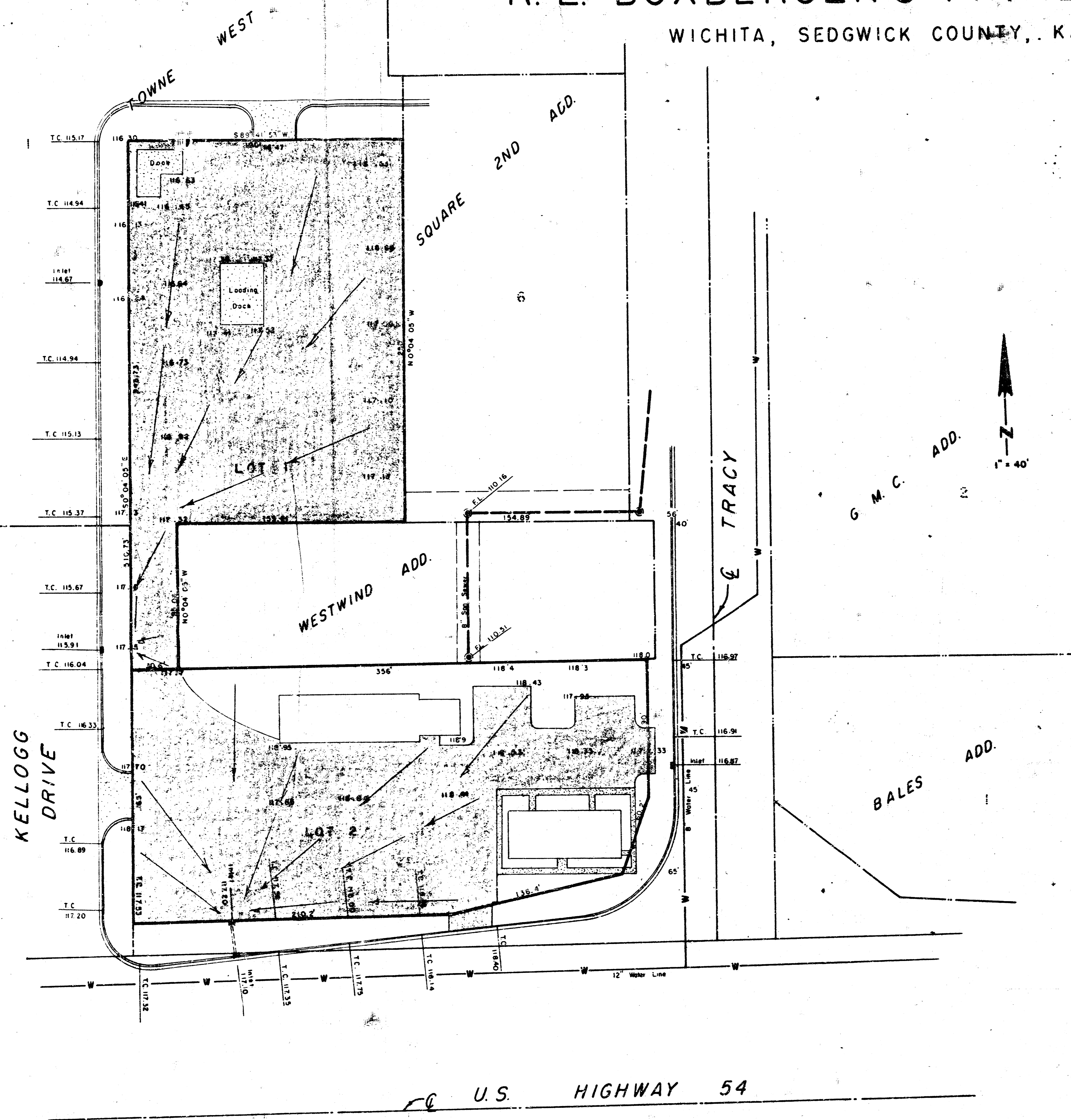
PRELIMINARY PLAT R. E. BOXBERGER'S FINAL EDITION

WICHITA, SEDGWICK COUNTY, KANSAS



VICINITY MAP
1" = 1000'

B.M. - ELEV. 116.97 " " ON TOP CURB ON WEST
SIDE AT THE NE COR.
CAPTION PROPERTY.



FOR: DEPARTMENT OF TRANSPORTATION

LOT GRADING PLAN

- LOT 1 - GRADE LOT TO DRAIN TO PUBLIC STREET
- LOT 2 - GRADE LOT TO DRAIN TO EXISTING INLET AT THE SW CORNER OF LOT 2.

LOWELL D. HIGH, L.S.
1542 S. ST. FRANCIS
WICHITA, KANSAS 67211

TOPO MADE AUGUST 11, 1987

FILMED FROM THE BEST
AVAILABLE COPY