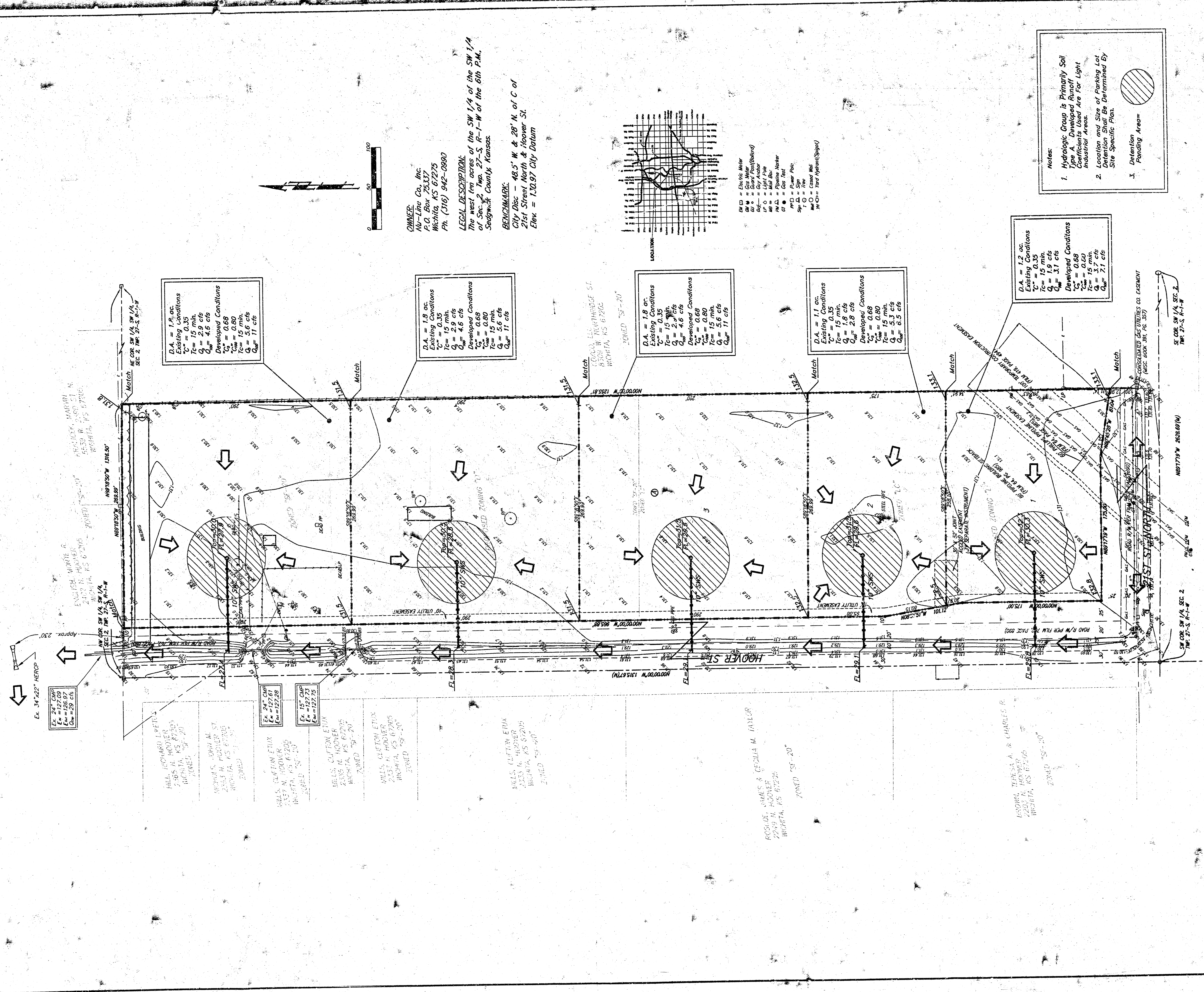


DRAINAGE PLAN

BURLESON ADDITION

WICHITA, SEDGWICK COUNTY, KANSAS



Ex. 34"x22" HEROP
 Ex. 24" CUP
 Ex. = 127.61
 Ex. = 126.97
 Ex. = 127.25

HILL, EDWARD ELLIX
 2385 N. HOOPER
 WICHITA, KS 67203
 ZONED "S-20"

WILLIAMS, JOHN M.
 2354 N. HOOPER ST
 WICHITA, KS 67203
 ZONED "S-20"

HILLS, CLIFTON ELLIX
 2353 N. HOOPER
 WICHITA, KS 67203
 ZONED "S-20"

HILLS, CLIFTON ELLIX
 2353 N. HOOPER
 WICHITA, KS 67203
 ZONED "S-20"

HILLS, CLIFTON ELLIX
 2353 N. HOOPER
 WICHITA, KS 67203
 ZONED "S-20"

AGOS, JAMES & CECILIA M. FAYLER
 2203 N. HOOPER
 WICHITA, KS 67203
 ZONED "S-20"

ANDRUS, THOMAS A. & CHARLES R.
 2203 N. HOOPER
 WICHITA, KS 67203
 ZONED "S-20"

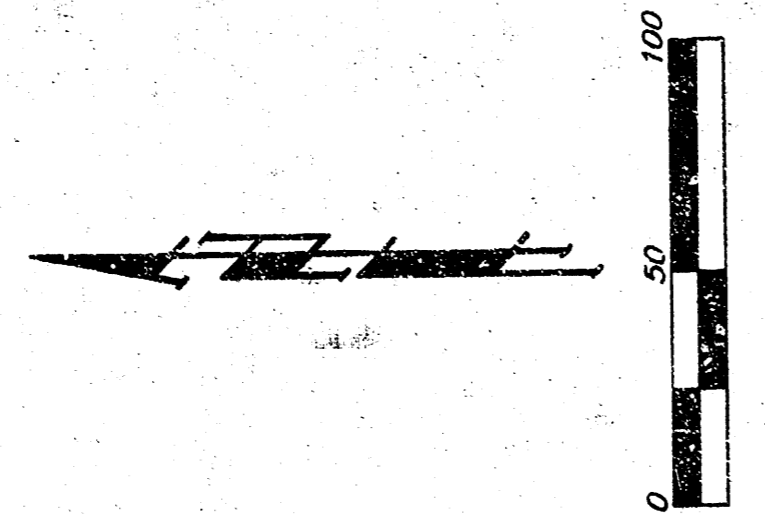
D.A. = 1.8 ac.
 Existing Conditions
 $C^* = 0.35$
 $T_c = 15 \text{ min.}$
 $Q_p = 2.9 \text{ cfs}$
 Developed Conditions
 $C^* = 0.68$
 $T_c = 15 \text{ min.}$
 $Q_p = 11 \text{ cfs}$

D.A. = 1.8 ac.
 Existing Conditions
 $C^* = 0.35$
 $T_c = 15 \text{ min.}$
 $Q_p = 2.9 \text{ cfs}$
 Developed Conditions
 $C^* = 0.68$
 $T_c = 15 \text{ min.}$
 $Q_p = 11 \text{ cfs}$

D.A. = 1.8 ac.
 Existing Conditions
 $C^* = 0.35$
 $T_c = 15 \text{ min.}$
 $Q_p = 2.9 \text{ cfs}$
 Developed Conditions
 $C^* = 0.68$
 $T_c = 15 \text{ min.}$
 $Q_p = 11 \text{ cfs}$

D.A. = 1.1 ac.
 Existing Conditions
 $C^* = 0.35$
 $T_c = 15 \text{ min.}$
 $Q_p = 1.9 \text{ cfs}$
 Developed Conditions
 $C^* = 0.68$
 $T_c = 15 \text{ min.}$
 $Q_p = 5.3 \text{ cfs}$

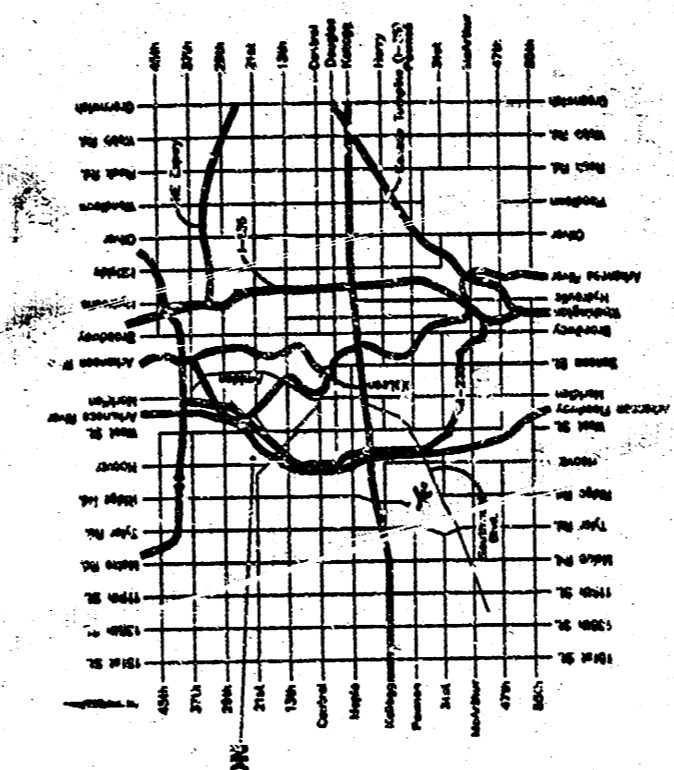
D.A. = 1.2 ac.
 Existing Conditions
 $C^* = 0.35$
 $T_c = 15 \text{ min.}$
 $Q_p = 3.1 \text{ cfs}$
 Developed Conditions
 $C^* = 0.68$
 $T_c = 15 \text{ min.}$
 $Q_p = 7.1 \text{ cfs}$



OWNER:
 AU-Line Co, Inc.
 P.O. Box 25337
 Wichita, KS 67225
 Ph. (316) 942-0800

LEGAL DESCRIPTION:
 The west 1/4 acres of the SW 1/4 of the SW 1/4
 of Sec. 2, Twp. 27-S, R-1-W of the 6th P.M.,
 Sedgwick County, Kansas.

BENCHMARK:
 City Disc - 48.5' W & 28' N. of C of
 21st Street North & Hoover St.
 Elev. = 130.97 City Datum



Legend:
 E.M. = Electric Meter
 G.M. = Gas Meter
 C.P. = Curved Profile
 U.P. = Utility Pole
 M. = Mail Box
 P.M. = Pole Mounted
 P.M. = Pole Mounted
 S.P. = Street Pole
 T.O. = Tree
 M.C. = Manhole (Sign)

Notes:
 1. Hydrologic Group is Primarily Soil Type A Developed Runoff Coefficients Used Are For Light Industrial Areas.
 2. Location and Size of Parking Lot Detention Shall Be Determined By Site Specific Plan.
 3. Detention Ponding Area