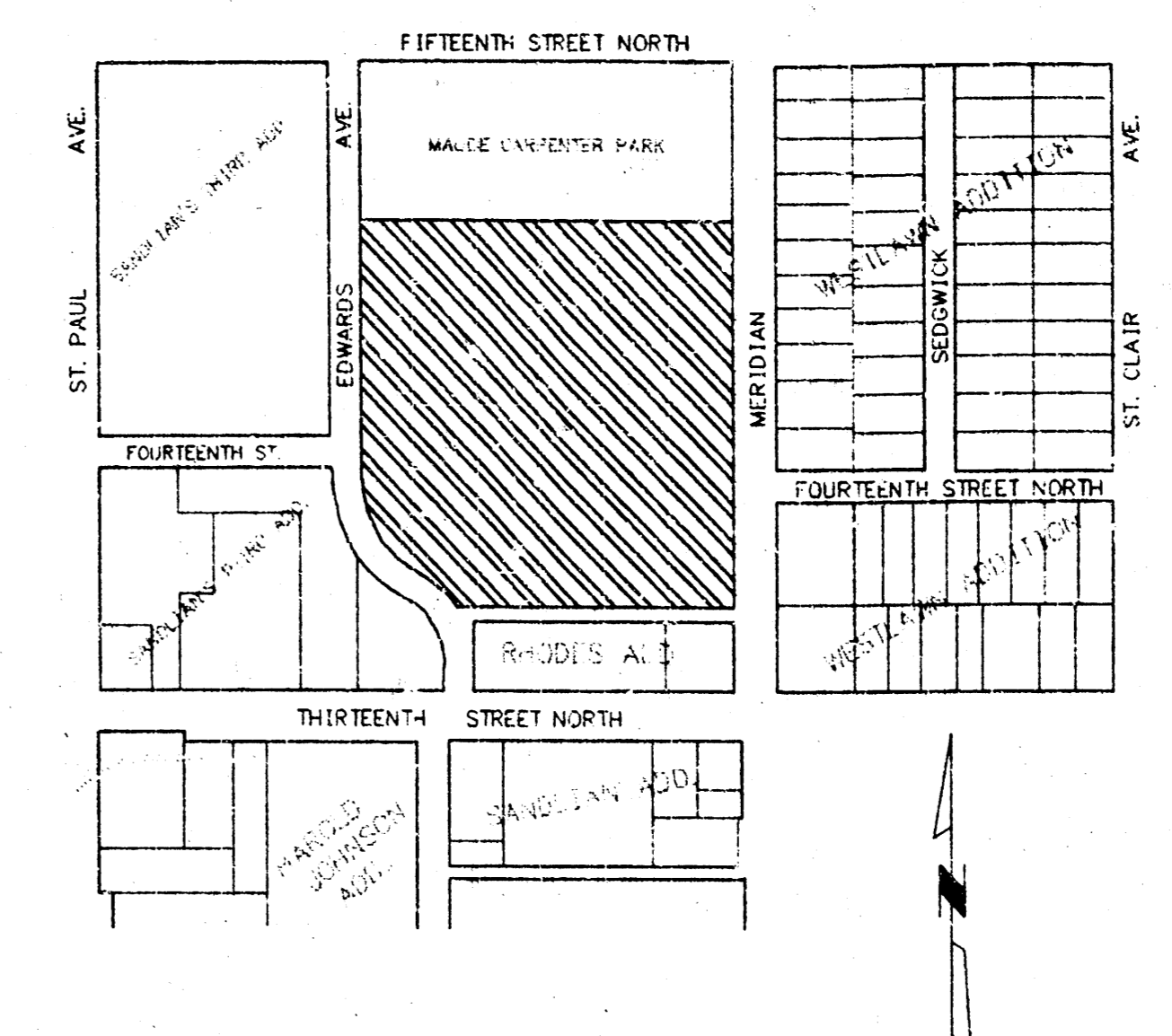
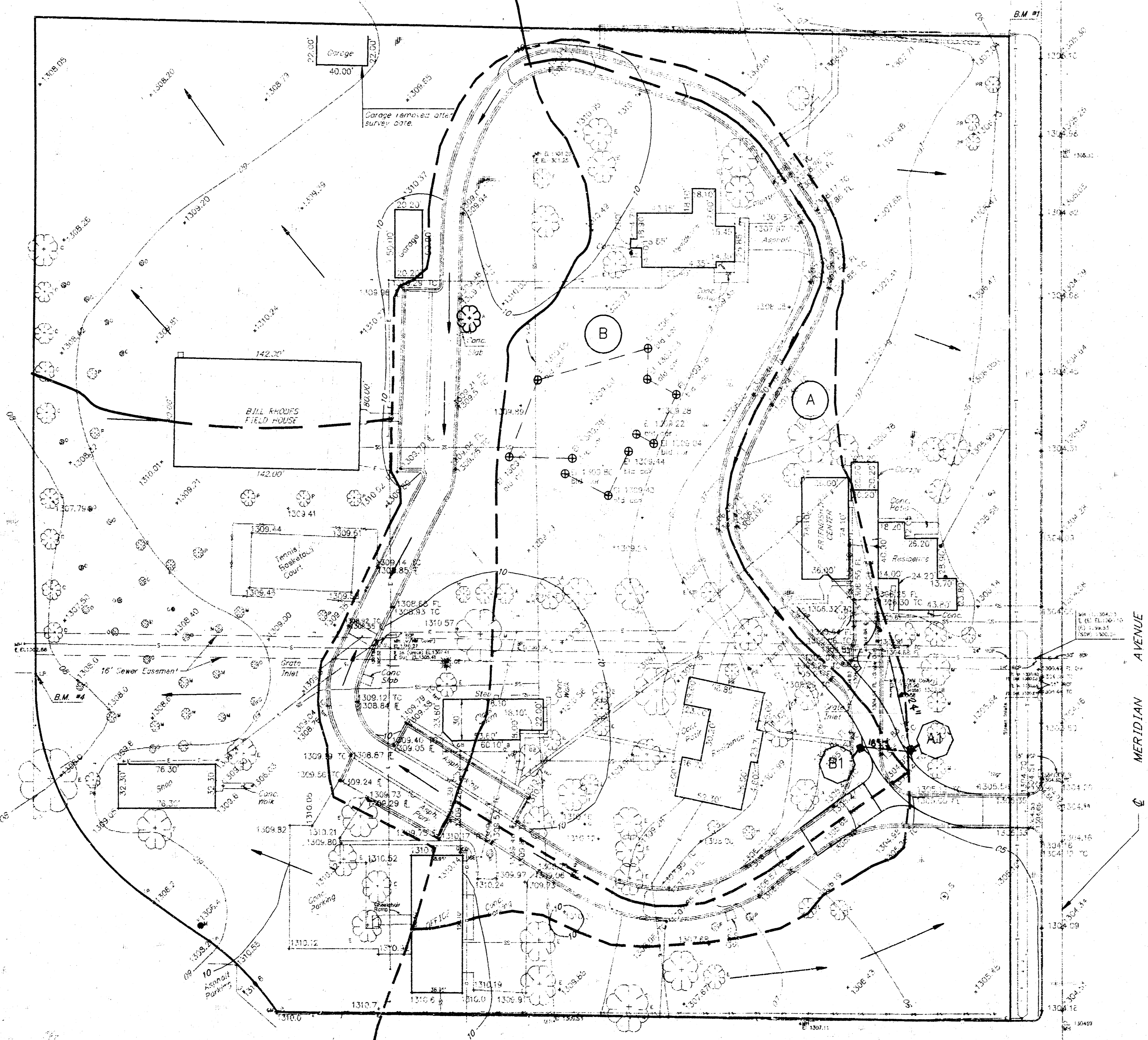


SURV. N.A./Z.G. | PLOT CADD | DES. | DR. G. Blumer | TR. | CKD. N.L.R. | APP. K.M.

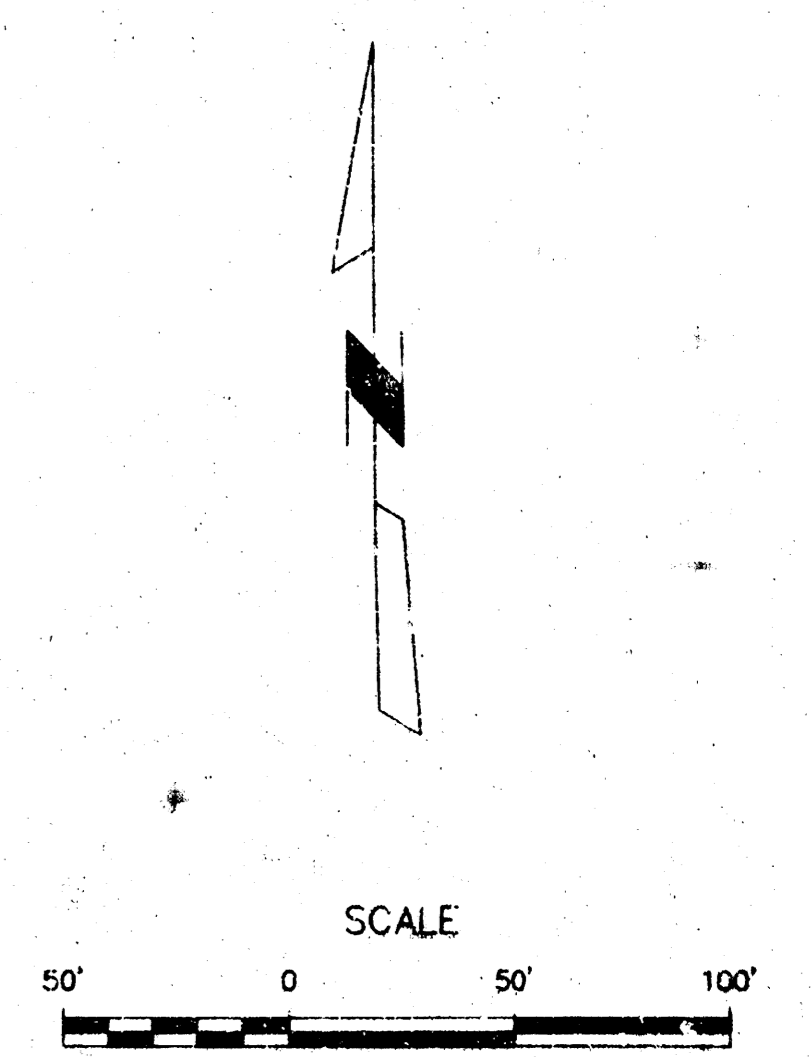
C:\K9521\MCARP2
 SCALE 1"=30'



VICINITY MAP
N.T.S.

LEGEND

- ← DRAINAGE DIRECTIONAL ARROW
- - - DRAINAGE BASIN
- ⊙ A1 DRAINAGE NODE
- ⊙ A DRAINAGE AREA



DRAINAGE SUMMARY

NODE A1

DRAINAGE AREA = 2.93 Ac
 RUNOFF COEFF. = .6
 RETURN PERIOD = 2 YRS.
 INTENSITY = 3.83 IN/HR.
 Q2 = 6.73 CFS

NODE B1

DRAINAGE AREA = 1.02 Ac
 RUNOFF COEFF. = .6
 RETURN PERIOD = 2 YRS.
 INTENSITY = 3.83 IN/HR.
 Q2 = 2.34 CFS

- LEGEND
- IRON OR PIPE SET
 - IRON OR PIPE FOUND
 - ⊙ WM WATER METER
 - ⊙ GM GAS METER
 - ⊙ MR MAN HOLE
 - ⊙ FH FIRE HYDRANT
 - ⊙ LP LIGHT POLE
 - ⊙ JB JUNCTION BOX (TELEPHONE)
 - ⊙ BT POWER POLE
 - DEAD MAN
 - SS- SANITARY SEWER
 - S- STORM SEWER
 - W- WATER LINE
 - G- GAS LINE
 - E- ELECTRIC
 - UE- UNDERGROUND ELECTRIC
 - T- TELEPHONE
 - FENCE
 - ⊙ A ASH
 - ⊙ B BUSH
 - ⊙ C CEDAR
 - ⊙ D COTTONWOOD
 - ⊙ E ELM
 - ⊙ H HEDGE
 - ⊙ L LOCUST
 - ⊙ M MAPLE
 - ⊙ O OAK
 - ⊙ P PEAR
 - ⊙ PR PECAN
 - ⊙ POP POPULAR
 - ⊙ S SYCAMORE
 - ⊙ W WALNUT

- BENCH MARKS**
- REF. B.M. = CITY DISC AT 17TH STREET AND MERIDIAN AVENUE EL. 1310.94
 - B.M. #1 = TOP OF PROPERTY IRON PIN N.E. COR. TRACT 20 EL. 1306.24
 - B.M. #2 = TOP OF PROPERTY IRON AT N.W. COR. OF M. CARPENTER PARK EL. 1308.49
 - B.M. #3 = TOP OF PROPERTY IRON 20' N. OF S.W. COR. M. CARPENTER PARK EL. 1308.93
 - B.M. #4 = TOP OF PROPERTY IRON, P. T. OF CURVE AT EDWARDS STREET EL. 1308.29

MAUDE CARPENTER CHILDREN'S CTR.
 1501 N. MERIDIAN
 WICHITA, KS 67203
DRAINAGE PLAN

Booker ASSOCIATES INC.
 OF KANSAS
 Wichita, Kansas

SCALE 1" = 50' DATE MAY, 1994 DWG. NO. K9549