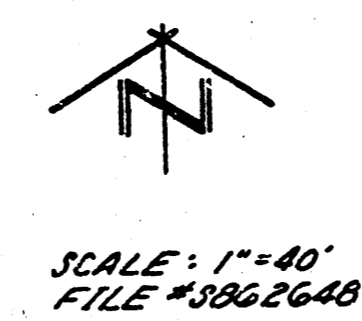
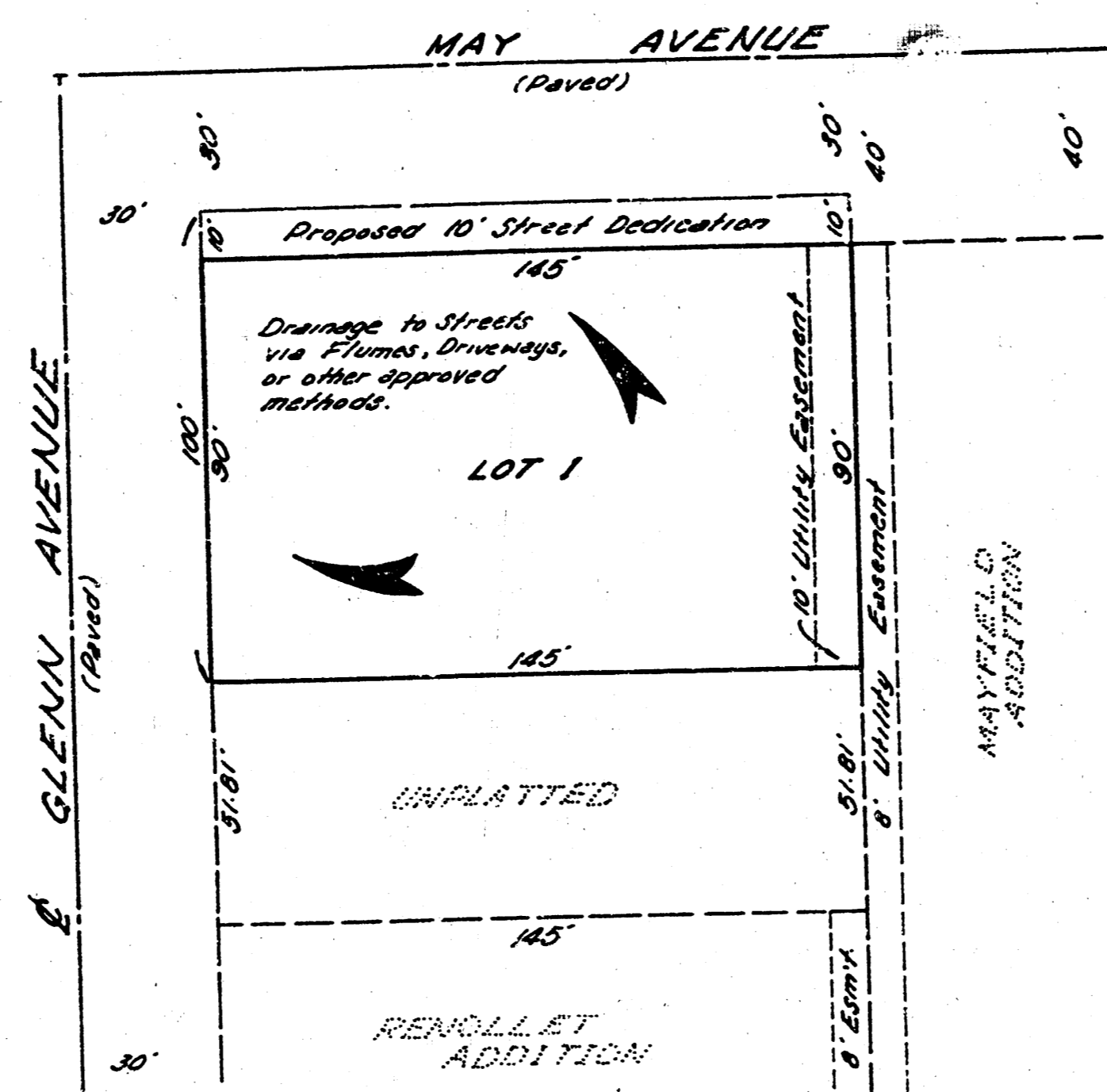


SEA CARPENTER'S ADDITION
(Drainage)

TERRA TECH
LAND SURVEYING INC.

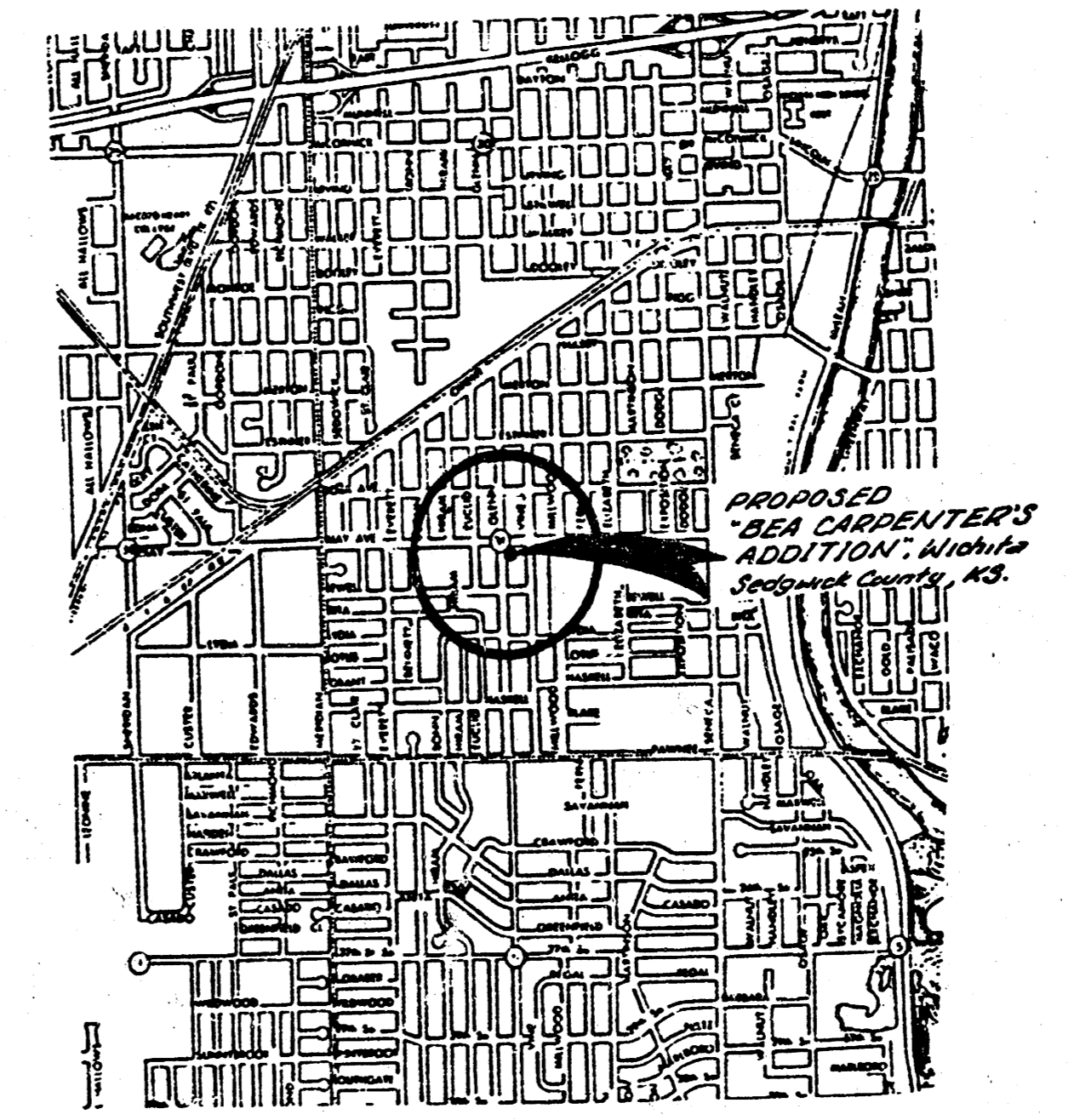
245 West Dewey
Wichita, Kansas 67203-2857
316.267.0744 / 316.267.2348

SITE DRAINAGE PLAN



GENERAL NOTES:
Sanitary Sewer line serving this property located in easement adjoining on East.
Storm Water Inlets located at the NE, NW, and SE Corners of the intersection of May and Glenn.
Water Mains located on the West side of Glenn and the North side of May, with a fire hydrant situated at the Northeast corner of the intersection.
ARKLA Gas Co. reports no lines in the area.
KPL Gas Service reports a 2" steel high pressure main lying E. side of the West lot of Glenn and a 2" steel high pressure main lying W. side of the East property line, as shown previously.

LOCATION MAP



FILMED FROM THE BEST
AVAILABLE COPY