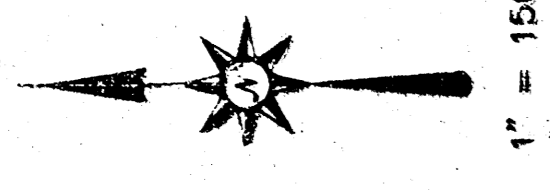


**SITE DRAINAGE PLAN**  
**CENTRAL MAIZE SCHOOLS ADDITION**  
 Sedgwick County, Kansas



▲ = IRON FOUND (UNKNOWN ORIGIN)  
 ● = IRON SET W/ MOEHRRING CAP

THE EAST 1700.00 FEET OF THE N.E. 1/4 OF SECTION 32,  
 TOWNSHIP 26 SOUTH, RANGE 1 WEST OF THE 6TH P.M.,  
 SEDGWICK COUNTY, KANSAS.

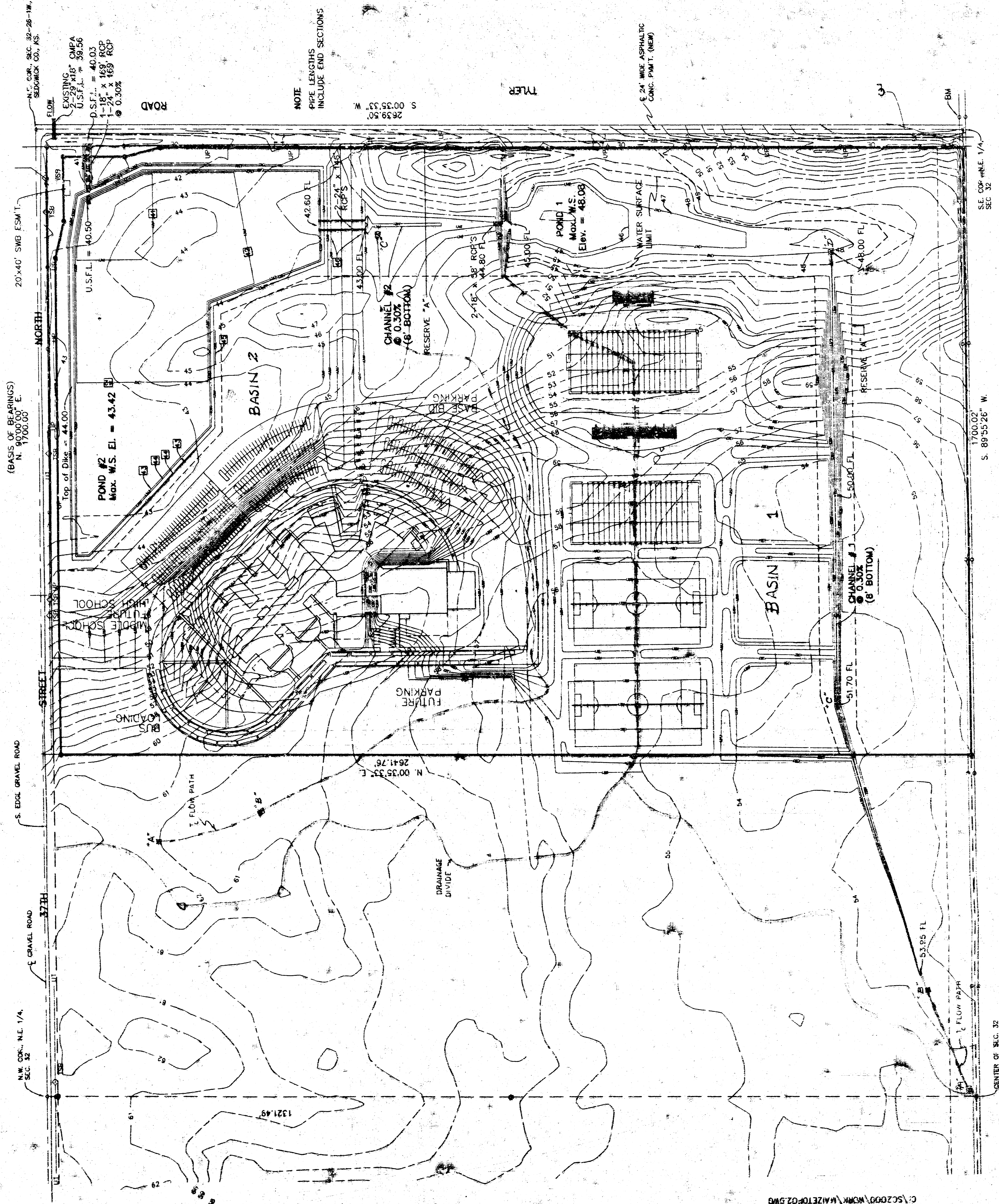
**BENCHMARK**  
 60.4 SPIKE IN NORTH POLE OF "H" FRAME  
 TRANSMISSION LINE, EAST OF S.E. COR., N.E. 1/4,  
 SEC. 32, ELEV. = 1363.49 N.G.V.D.

TOP OF IRON, N.W. COR., N.E. 1/4, N.W. 1/4,  
 SECTION 32, ELEV. = 1353.38 N.G.V.D.  
 ADD 1300.00 TO SPOT ELEV. TO CONVERT TO N.G.V.D.

**LEGEND**

UP = UTILITY POLE  
 OE = OVERHEAD ELECTRIC  
 UT = UNDERGROUND TELEPHONE  
 TSD = TELEPHONE SPLICE BOX

**MOEHRRING & ASSOCIATES**  
 CONSULTING ENGINEERS  
 433 S. HYDRAULIC  
 WICHITA, KS.  
 263-8291



C:\SC2000\MOHR\MAIZET02.DWG