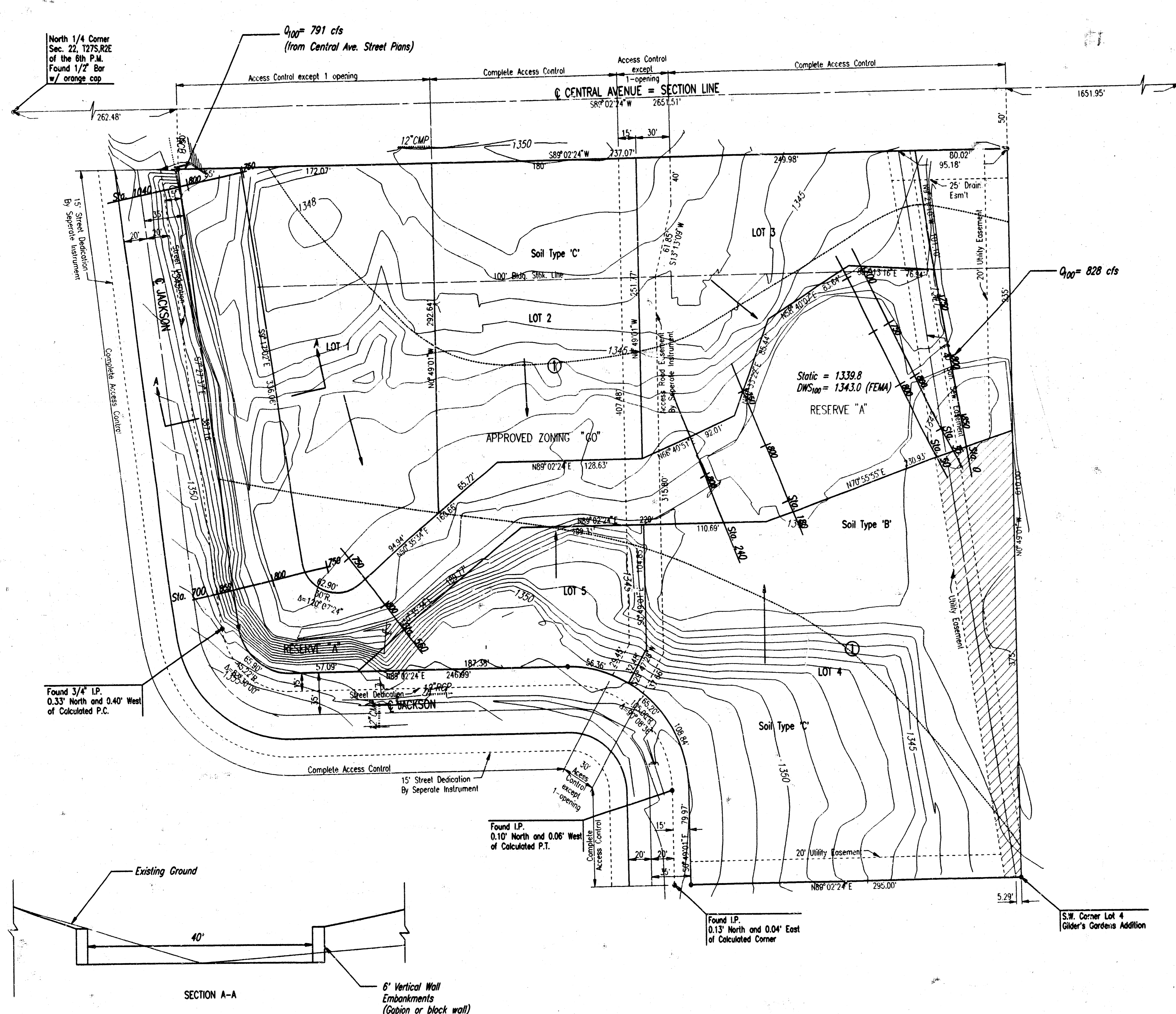


DRAINAGE PLAN

PLAZA CENTRAL OFFICE PARK

AN ADDITION TO WICHITA, SEDGWICK COUNTY, KANSAS



N.E. Corner
Sec. 22, T27S,R2E
of the 8th P.M.
Found Lead Plug
in Concrete

North 1/4 Corner
Sec. 22, T27S,R2E
of the 8th P.M.
Found 1/2" Bar
w/ orange cap

SCALE: 1"=50'
JUNE 1998

B.M. 1: CHISELED "X" ON NORTH RM SANITARY SEWER MANHOLE,
280' SOUTH OF E CENTRAL, 772' EAST OF E JACKSON,
2ND MANHOLE SOUTH OF CENTRAL. ELEV.=1342.77 M.S.L.

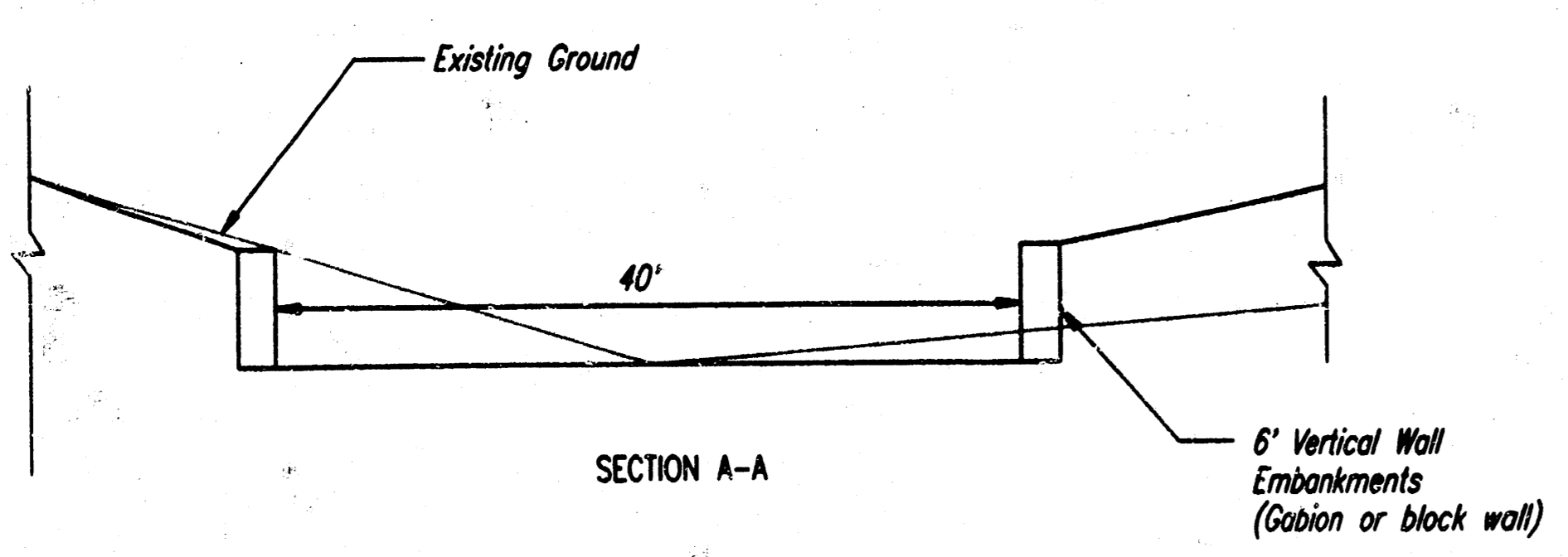
Drainage from Lots 1 through 5 to be routed to
Reserve "A" via drives, parking lots, flumes,
private storm sewers, or other approved
drainage devices.

LEGEND

- Flow Direction
- Soil Type Boundary

Profile Output Table - Standard Table 1
HEC-RAS Plan: Plan 01 River: spring branch tr Reach: 1

Reach	River Sta	Q Total (cfs)	Min Ch D (ft)	W.S. Elev (ft)	Ch W.S. (ft)	E.G. Elev (ft)	E.G. Slope (ft/ft)	Vol Chnl (ft ³ /s)	Flow Area (sq ft)	Top Width (ft)	Froude # Chl
1	1040	820.00	1339.80	1344.86	1345.10	0.001003	3.96	214.82	44.82	0.31	
1	700	820.00	1339.80	1344.41	1344.70	0.001377	4.36	194.56	44.48	0.36	
1	560	820.00	1339.80	1344.16	1344.48	0.001864	4.62	183.42	44.23	0.39	
1	240	820.00	1339.80	1343.01	1343.62	0.004857	6.30	133.30	43.12	0.62	
1	180	820.00	1339.80	1343.30	1343.38	0.005880	2.36	372.14	124.66	0.22	
1	50	820.00	1339.80	1343.25	1343.31	0.000417	1.98	454.78	183.33	0.19	
1	35	820.00	1339.80	1343.02	1343.27	0.003005	4.93	228.92	136.04	0.49	
1	0	820.00	1339.80	1342.80	1342.40	0.004359	5.66	197.56	130.66	0.59	



DSNR, KER, OPER, DAR, SCALE: 1"=50.00
 01/19/98 08:51:57 \draw2_08-17-1998_09:28:01.am

East 1/4 Corner
Sec. 22, T27S,R2E
of the 8th P.M.

S.W. Corner Lot 4
Gilder's Gardens Addition

Found I.P.
0.13' North and 0.04' East
of Calculated Corner

Found I.P.
0.10' North and 0.06' West
of Calculated P.T.

Found 3/4" I.P.
0.33' North and 0.40' West
of Calculated P.C.