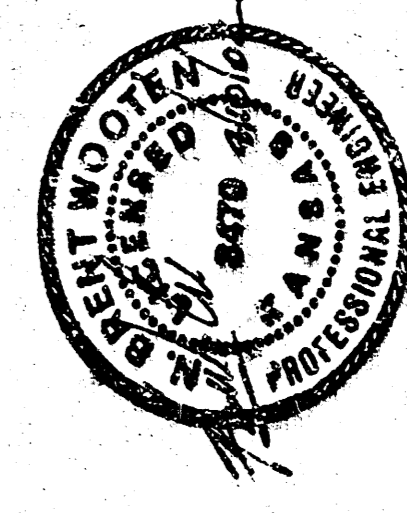
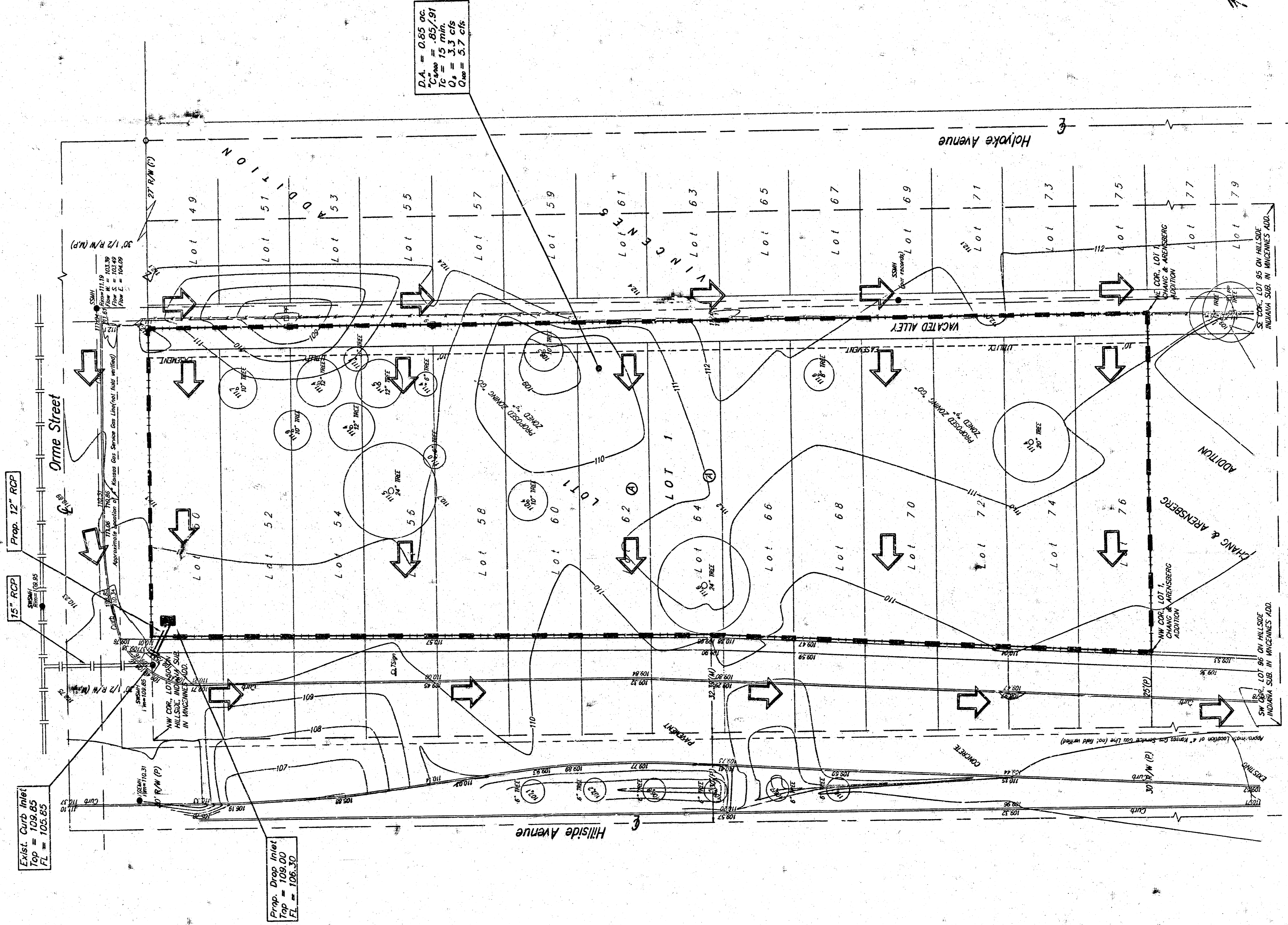
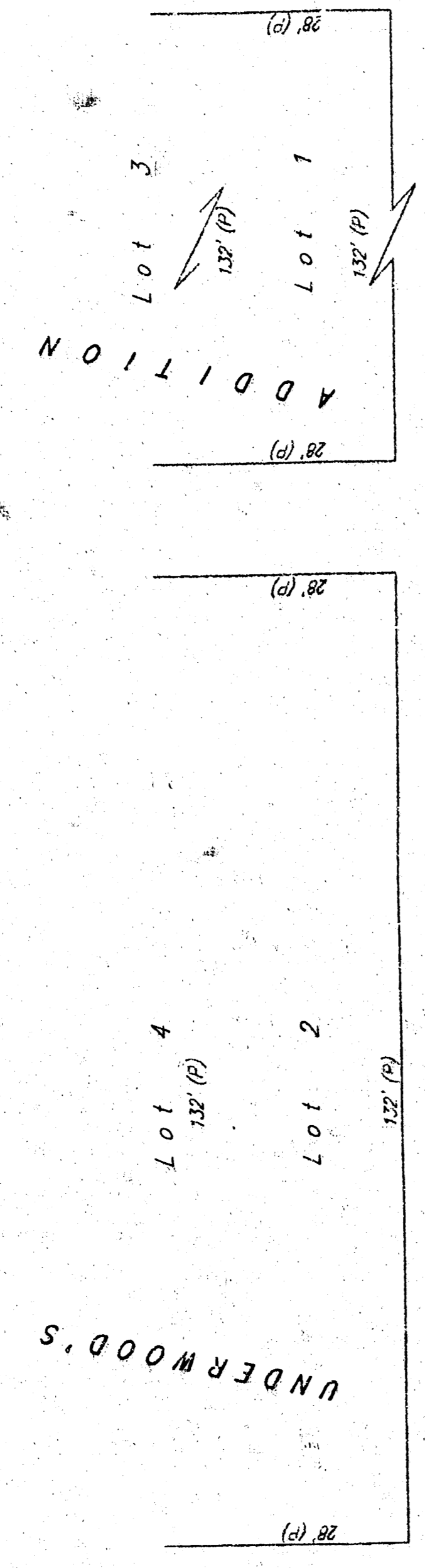


# DRAINAGE PLAN CHANG & ARENSBERG 2ND ADDITION WICHITA, SEDGWICK COUNTY, KANSAS

- (P) = PAVED  
 (A) = ASPHALT  
 (G) = GRASS  
 (C) = CALCULATED PER RESURFACING  
 (C-1) = CALCULATED PER RESURFACING  
 (C-2) = CALCULATED PER RESURFACING  
 (C-3) = CALCULATED PER RESURFACING  
 (C-4) = CALCULATED PER RESURFACING  
 (C-5) = CALCULATED PER RESURFACING  
 (C-6) = CALCULATED PER RESURFACING  
 (C-7) = CALCULATED PER RESURFACING  
 (C-8) = CALCULATED PER RESURFACING  
 (C-9) = CALCULATED PER RESURFACING  
 (C-10) = CALCULATED PER RESURFACING  
 (C-11) = CALCULATED PER RESURFACING  
 (C-12) = CALCULATED PER RESURFACING  
 (C-13) = CALCULATED PER RESURFACING  
 (C-14) = CALCULATED PER RESURFACING  
 (C-15) = CALCULATED PER RESURFACING  
 (C-16) = CALCULATED PER RESURFACING  
 (C-17) = CALCULATED PER RESURFACING  
 (C-18) = CALCULATED PER RESURFACING  
 (C-19) = CALCULATED PER RESURFACING  
 (C-20) = CALCULATED PER RESURFACING  
 (C-21) = CALCULATED PER RESURFACING  
 (C-22) = CALCULATED PER RESURFACING  
 (C-23) = CALCULATED PER RESURFACING  
 (C-24) = CALCULATED PER RESURFACING  
 (C-25) = CALCULATED PER RESURFACING  
 (C-26) = CALCULATED PER RESURFACING  
 (C-27) = CALCULATED PER RESURFACING  
 (C-28) = CALCULATED PER RESURFACING  
 (C-29) = CALCULATED PER RESURFACING  
 (C-30) = CALCULATED PER RESURFACING  
 (C-31) = CALCULATED PER RESURFACING  
 (C-32) = CALCULATED PER RESURFACING  
 (C-33) = CALCULATED PER RESURFACING  
 (C-34) = CALCULATED PER RESURFACING  
 (C-35) = CALCULATED PER RESURFACING  
 (C-36) = CALCULATED PER RESURFACING  
 (C-37) = CALCULATED PER RESURFACING  
 (C-38) = CALCULATED PER RESURFACING  
 (C-39) = CALCULATED PER RESURFACING  
 (C-40) = CALCULATED PER RESURFACING  
 (C-41) = CALCULATED PER RESURFACING  
 (C-42) = CALCULATED PER RESURFACING  
 (C-43) = CALCULATED PER RESURFACING  
 (C-44) = CALCULATED PER RESURFACING  
 (C-45) = CALCULATED PER RESURFACING  
 (C-46) = CALCULATED PER RESURFACING  
 (C-47) = CALCULATED PER RESURFACING  
 (C-48) = CALCULATED PER RESURFACING  
 (C-49) = CALCULATED PER RESURFACING  
 (C-50) = CALCULATED PER RESURFACING  
 (C-51) = CALCULATED PER RESURFACING  
 (C-52) = CALCULATED PER RESURFACING  
 (C-53) = CALCULATED PER RESURFACING  
 (C-54) = CALCULATED PER RESURFACING  
 (C-55) = CALCULATED PER RESURFACING  
 (C-56) = CALCULATED PER RESURFACING  
 (C-57) = CALCULATED PER RESURFACING  
 (C-58) = CALCULATED PER RESURFACING  
 (C-59) = CALCULATED PER RESURFACING  
 (C-60) = CALCULATED PER RESURFACING  
 (C-61) = CALCULATED PER RESURFACING  
 (C-62) = CALCULATED PER RESURFACING  
 (C-63) = CALCULATED PER RESURFACING  
 (C-64) = CALCULATED PER RESURFACING  
 (C-65) = CALCULATED PER RESURFACING  
 (C-66) = CALCULATED PER RESURFACING  
 (C-67) = CALCULATED PER RESURFACING  
 (C-68) = CALCULATED PER RESURFACING  
 (C-69) = CALCULATED PER RESURFACING  
 (C-70) = CALCULATED PER RESURFACING  
 (C-71) = CALCULATED PER RESURFACING  
 (C-72) = CALCULATED PER RESURFACING  
 (C-73) = CALCULATED PER RESURFACING  
 (C-74) = CALCULATED PER RESURFACING  
 (C-75) = CALCULATED PER RESURFACING  
 (C-76) = CALCULATED PER RESURFACING  
 (C-77) = CALCULATED PER RESURFACING  
 (C-78) = CALCULATED PER RESURFACING  
 (C-79) = CALCULATED PER RESURFACING  
 (C-80) = CALCULATED PER RESURFACING  
 (C-81) = CALCULATED PER RESURFACING  
 (C-82) = CALCULATED PER RESURFACING  
 (C-83) = CALCULATED PER RESURFACING  
 (C-84) = CALCULATED PER RESURFACING  
 (C-85) = CALCULATED PER RESURFACING  
 (C-86) = CALCULATED PER RESURFACING  
 (C-87) = CALCULATED PER RESURFACING  
 (C-88) = CALCULATED PER RESURFACING  
 (C-89) = CALCULATED PER RESURFACING  
 (C-90) = CALCULATED PER RESURFACING  
 (C-91) = CALCULATED PER RESURFACING  
 (C-92) = CALCULATED PER RESURFACING  
 (C-93) = CALCULATED PER RESURFACING  
 (C-94) = CALCULATED PER RESURFACING  
 (C-95) = CALCULATED PER RESURFACING  
 (C-96) = CALCULATED PER RESURFACING  
 (C-97) = CALCULATED PER RESURFACING  
 (C-98) = CALCULATED PER RESURFACING  
 (C-99) = CALCULATED PER RESURFACING  
 (C-100) = CALCULATED PER RESURFACING



**DRAINAGE NOTE:**  
 The lot will be served with storm sewer located in the northwest corner of the lot. All runoff shall discharge to the street via driveway one or Neenah storm water curb openings.