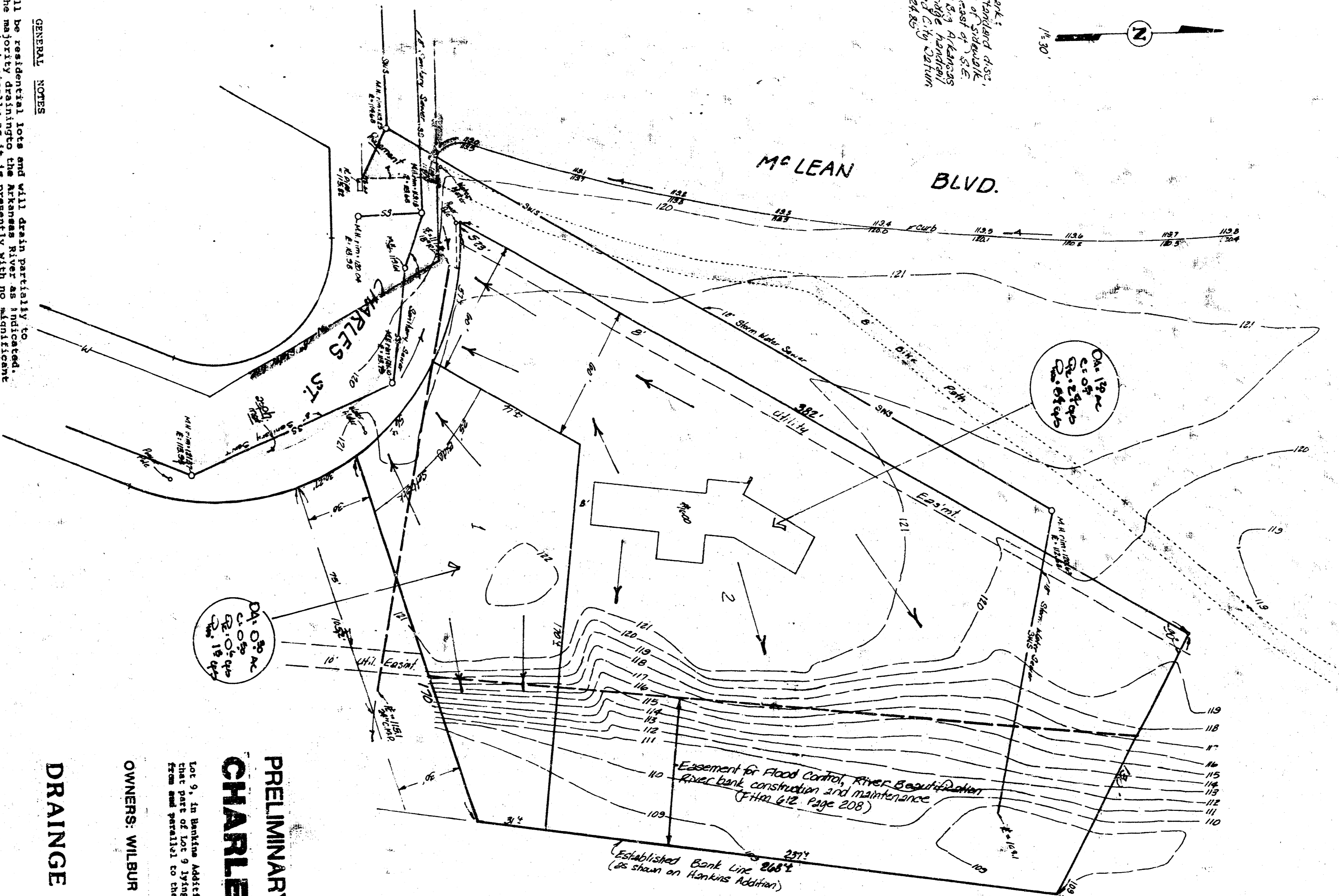
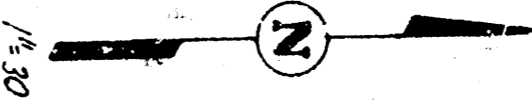


Survey mark:
1/2" x 3/4" galvanized steel,
and set at 3.5
end of 10' x 10' building
foundation in 1971
Elev = 128.80



GENERAL NOTES
The 2 lots will be residential lots and will drain partially to Charles St, with the majority draining to the present storm sewer. The storm sewer to be done within the floodway area. No runoff from these lots into the floodway area will be considered. These two lots are indicated adjacent to the lots.

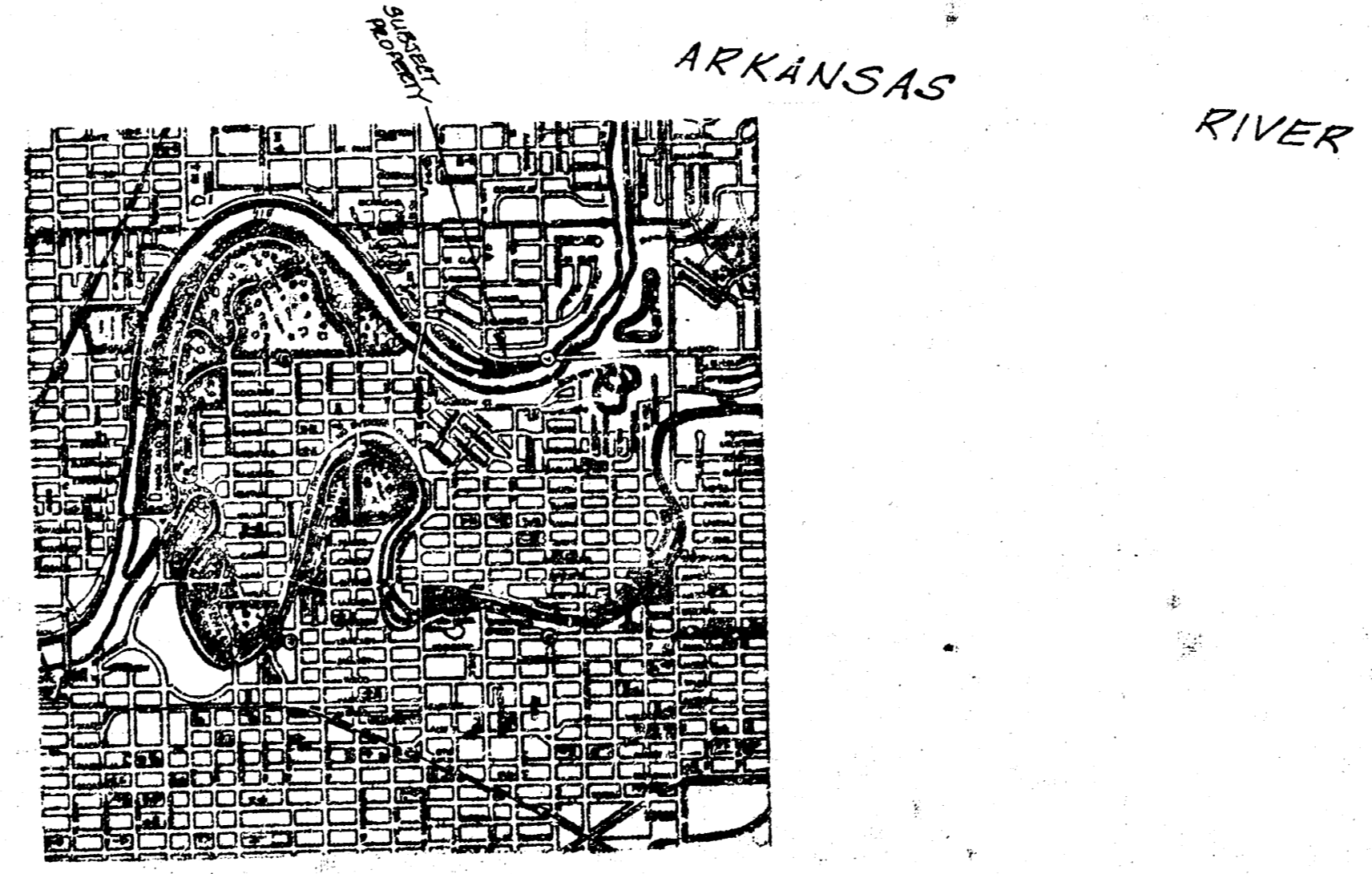
PRELIMINARY PLAT
CHARLES COURT ADDITION

DRAINAGE & UTILITY PLAN

OWNERS: WILBUR F. KRUSE and MARY T. KRUSE

BAUGHMAN COMPANY, P.A.
SURVEYING & ENGINEERING
316282721 • 500 DAWN • WASHINGTON, MISSISSIPPI

MAY 23, 1986



Revised
5/18/86