

DRAINAGE PLAN

CIRCUIT CITY ADDITION

WICHITA, SEDGWICK COUNTY, KANSAS

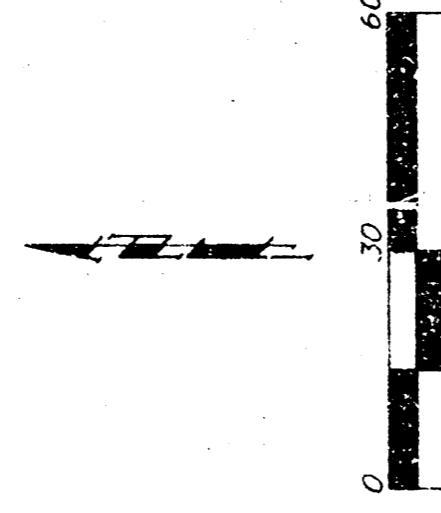
DRAINAGE DATA

Drainage Area (Acres)	C ₁	C ₂	T ₁ (min)	T ₂ (hr)	Q ₁ (cfs)	Q ₂ (cfs)
A	0.81	0.83	15	4.56	7.37	3.2
B	1.02	0.86	0.91	4.56	7.37	4.0
C	1.01	0.87	0.89	4.56	7.37	4.0
D	0.66	0.87	0.89	4.56	7.37	2.6
E	0.35	0.87	0.89	4.56	7.37	1.4
F	0.40	0.69	0.80	4.56	7.37	1.3
G	0.60	0.86	0.91	4.56	7.37	2.4
H	0.15	0.69	0.80	4.56	7.37	0.5

MINIMUM PAD ELEVATIONS

Lot	Block Elevation (NGVD)	Elevation (COM)
1	1.334.0	146.6
2	1.334.0	146.6

NOTE: The proposed drainage plan provided herein is a generally defined plan to follow for design. It is recognized and assumed that upon the final design of street and storm sewer improvements within this plot, that the design of the storm sewer system and the design of the drainage pipe will be implemented to the satisfaction of the improvements to obtain the most economical design and construction possible.

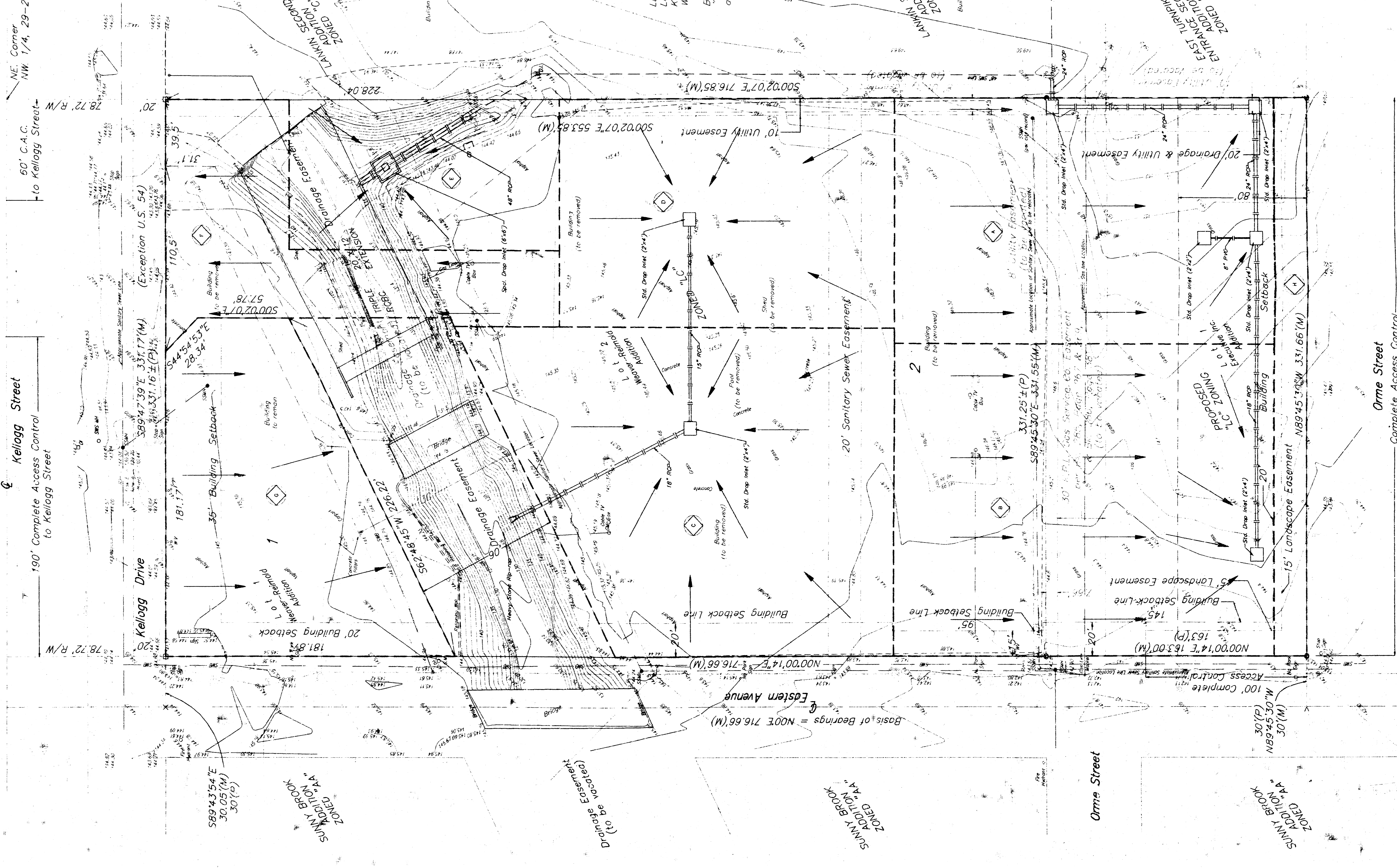


- X = Chiseled Cross Found
- = 1/2" Iron Pipe Found
- = Chiseled V-Notch Found
- = #4 Baughman Rebar Set

PP = Power Pole
 WY = Water Vault
 SSMP = Sanitary Sewer Manhole
 UC, K.C.E. = Underground Electric
 OM = Gas Meter
 SWS MB = Sanitary Sewer Manhole
 CB = Concrete Box
 Datum = Contiguous Elevation
 City Datum = 1182.4 M.S.L. Datum

LEGAL DESCRIPTION:
 Lots 1 and 2, Weaver-Reimold Addition, to Wichita, Kansas Together with Lot 1 Executives Inc. Addition, Wichita, Kansas

BENCHMARK:
 □ cut top of curb, Southeast corner of Orme and Eastern Elevation = 145.21 City Datum



VICINITY MAP

BAUGHMAN COMPANY P.A.
 ENGINEERING, SURVEYING & PLANNING
 January 22, 1996

MANSON-CUMMINGS
 ADDITION
 ZONED "BB"