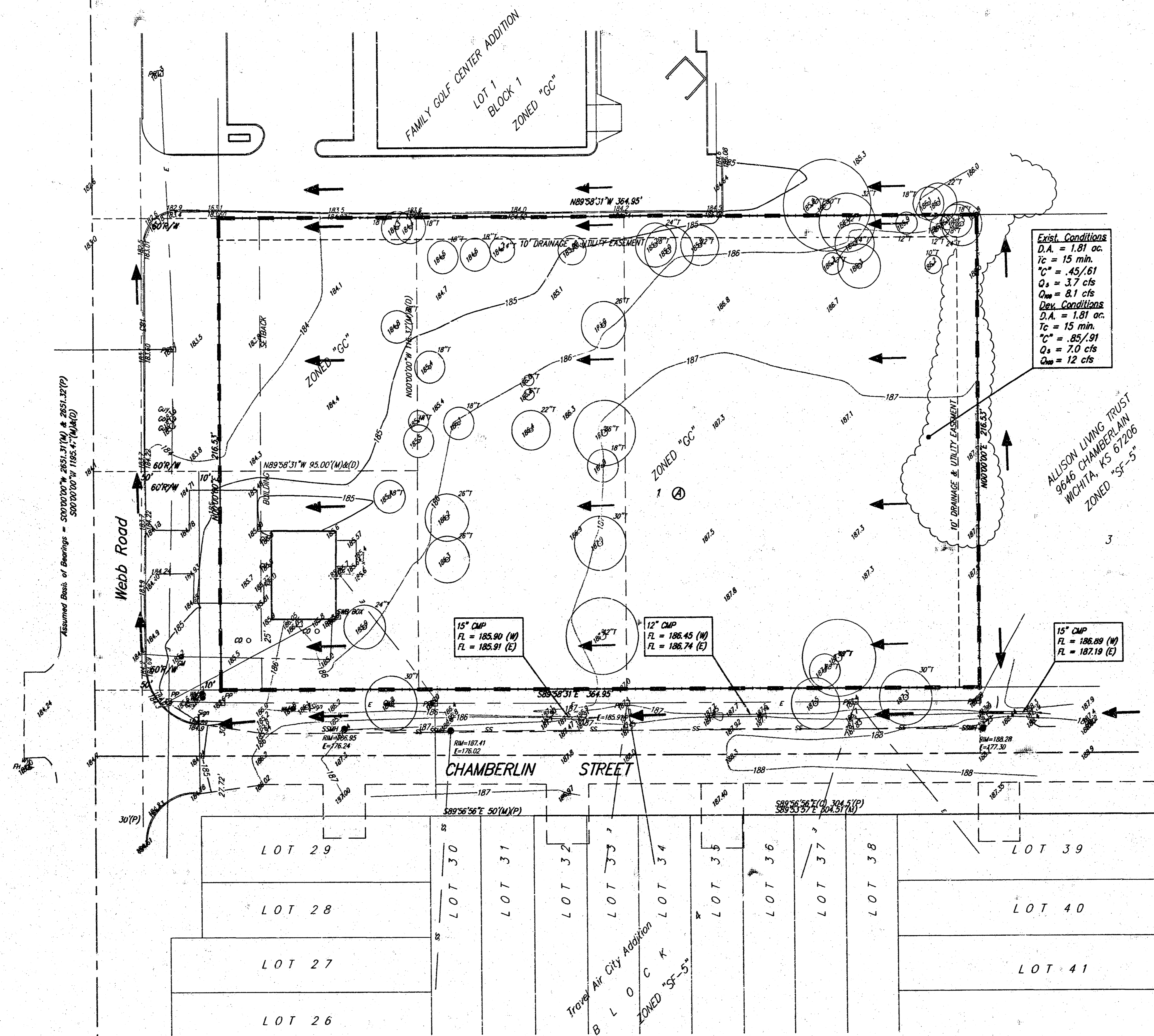


DRAINAGE PLAN CORNEJO EAST ADDITION WICHITA, SEDGWICK COUNTY, KANSAS



USD 259
201 N. WATER
WICHITA, KS 67202
ZONED "SF-5"

Assumed Basis of Bearings = S00°00'00" W 2652.71' (M) & 2651.37' (P)
S89°56'36" E 300.00' (M&P)
S89°56'36" E 300.00' (M&P)

Exist. Conditions
D.A. = 1.81 ft.
Tc = 15 min.
Cc = .45/.61
Qs = 3.7 cfs
Qm = 8.1 cfs

Dev. Conditions
D.A. = 1.81 ft.
Tc = 15 min.
Cc = .65/.91
Qs = 7.0 cfs
Qm = 12 cfs

- = #4 REBAR W/ "BAUGHMAN" CAP (FOUND)
 - = #1 REBAR W/ "BAUGHMAN" CAP (SET)
 - ⊗ = CROSS (FOUND)
 - = 1/2" IRON (FOUND)
 - = "K" HOLE & WASHER (FOUND)
 - (M) = MEASURED
 - (D) = DESCRIBED
 - (P) = PLATED
 - (C) = CALCULATED
- CO ○ = Cleanout
 - FH ○ = Fire Hydrant
 - GP ○ = Guard Post (Ballard)
 - GA ○ = Guy Anchor
 - PP ○ = Power Pole
 - SP ○ = Sign
 - SSMH ○ = Sanitary Sewer Manhole
 - SWP ○ = Southwestern Bell Pedestal
 - T ○ = Tree
 - MM ○ = Meter Meter
 - WV ○ = Water Valve

Benchmark:
RR Spike, East Side of Telephone
Pole Parcel A, Family Golf Center Addition
37' S and 21' West of NW Cor.
Elev. = 181.52 City Datum

