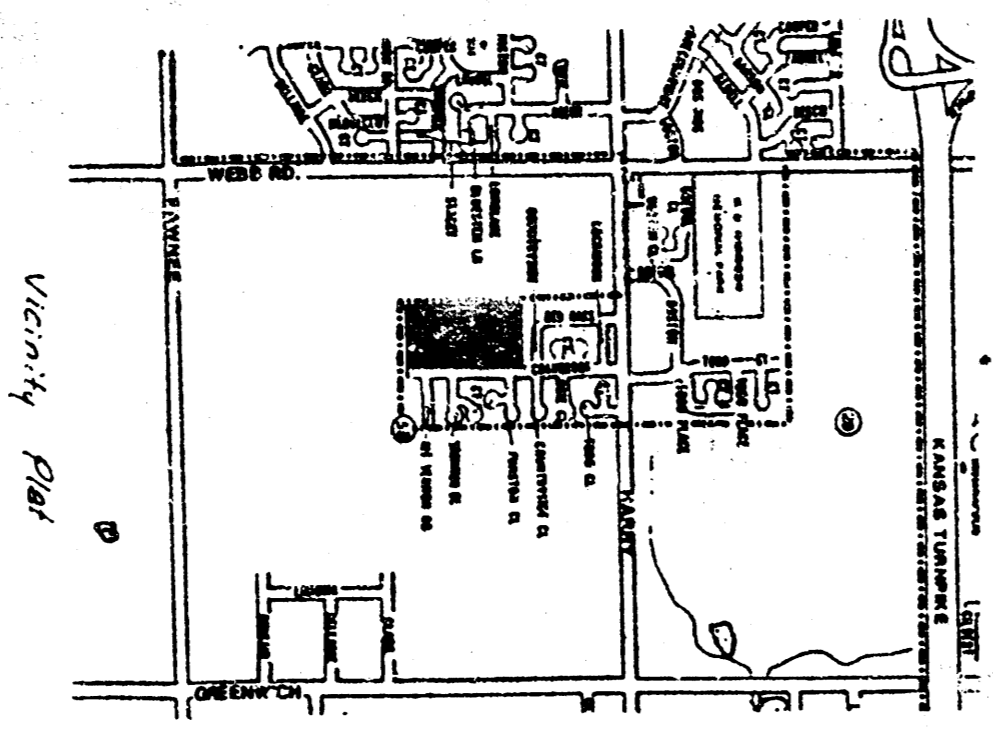
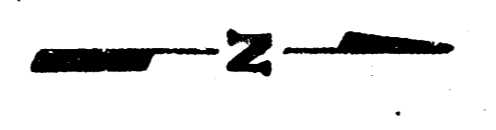


Cranbrook Addn

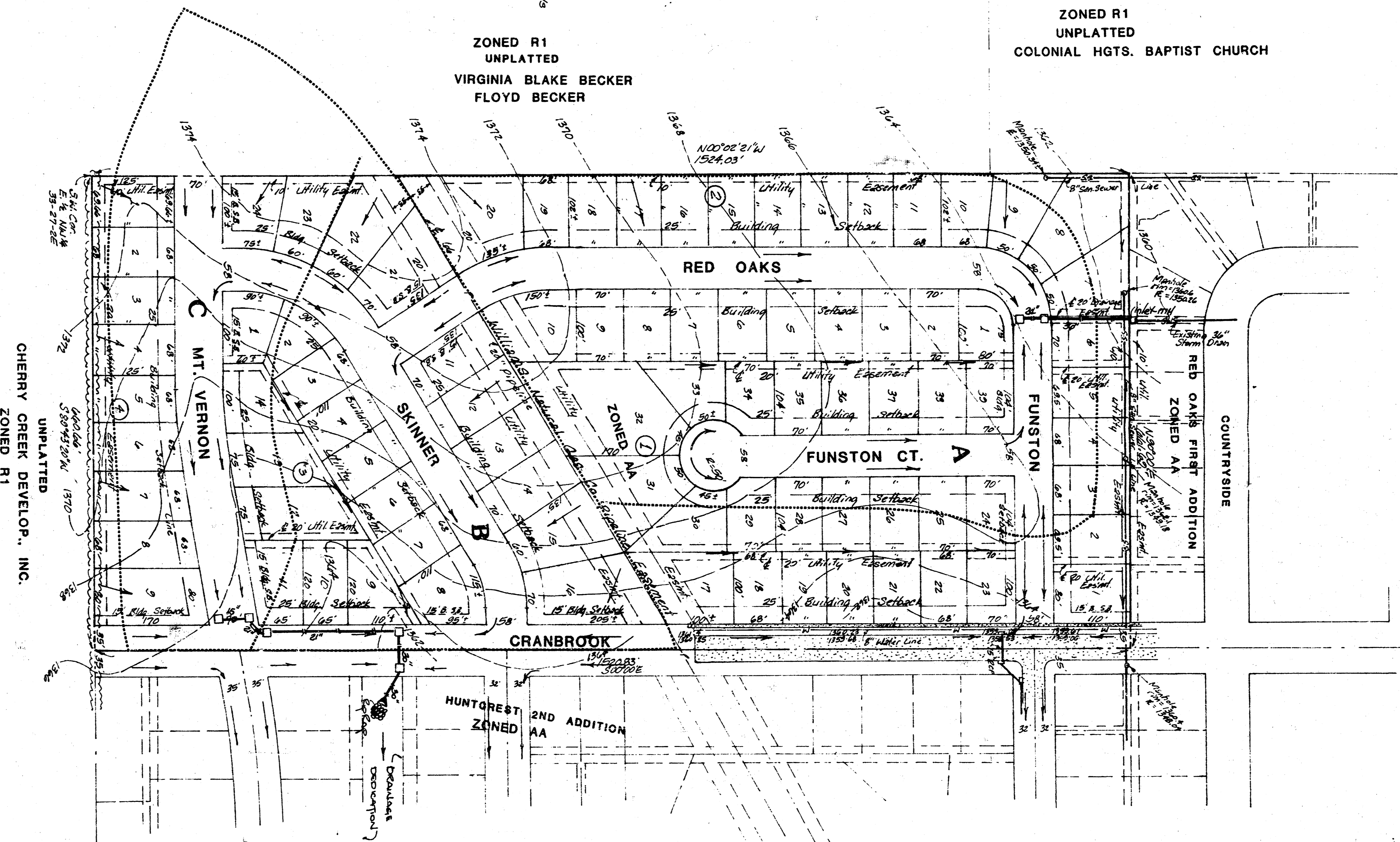


1/4" = 100'
 All contours at 2 foot intervals
 Date of Topo - 1975
 Survey mark: Pointmark
 40' South of NE Cor. NW 1/4
 Elev. = 1343.69 MDC



ZONED R1
 UNPLATTED
 COLONIAL HGTS. BAPTIST CHURCH

ZONED R1
 UNPLATTED
 VIRGINIA BLAKE BECKER
 FLOYD BECKER



PRELIMINARY PLAT
CRANBROOK ADDITION
 A TRACT IN THE E1/2 OF THE
 NW1/4 OF SEC. 33 27-2E
 OWNERS: JIM COHLMA
 SAMMY KHOURI
 HARRY KHOURI JR.

DRAINAGE CALCULATIONS

AREA	ACRES	C2 CFS	Q100 CFS	PIPE DESIGN R.C.P.	NOTES
A	9.2	0.5	27.3	36" AT 0.50%	100 YEAR SUMP DISCHARGE INLET MANHOLE AT REAR LOT
B	5.3	0.5	15.7	30" AT 0.57%	2 YEAR DISCHARGE WITH 100 YR. OVERLEAD TO DITCH
C	5.0	0.5	14.8	21" AT 0.50%	3 YEAR DISCHARGE WITH 100 YEAR BYPASS TO SUMP
				15" AT 0.50%	CROSS-STREET PIPE

DRAINAGE PLAN

BAUGHMAN COMPANY, P.A.
 SURVEYING & ENGINEERING
 1400 S. 17TH ST. SUITE 100, WASHINGTON, D.C. 20001