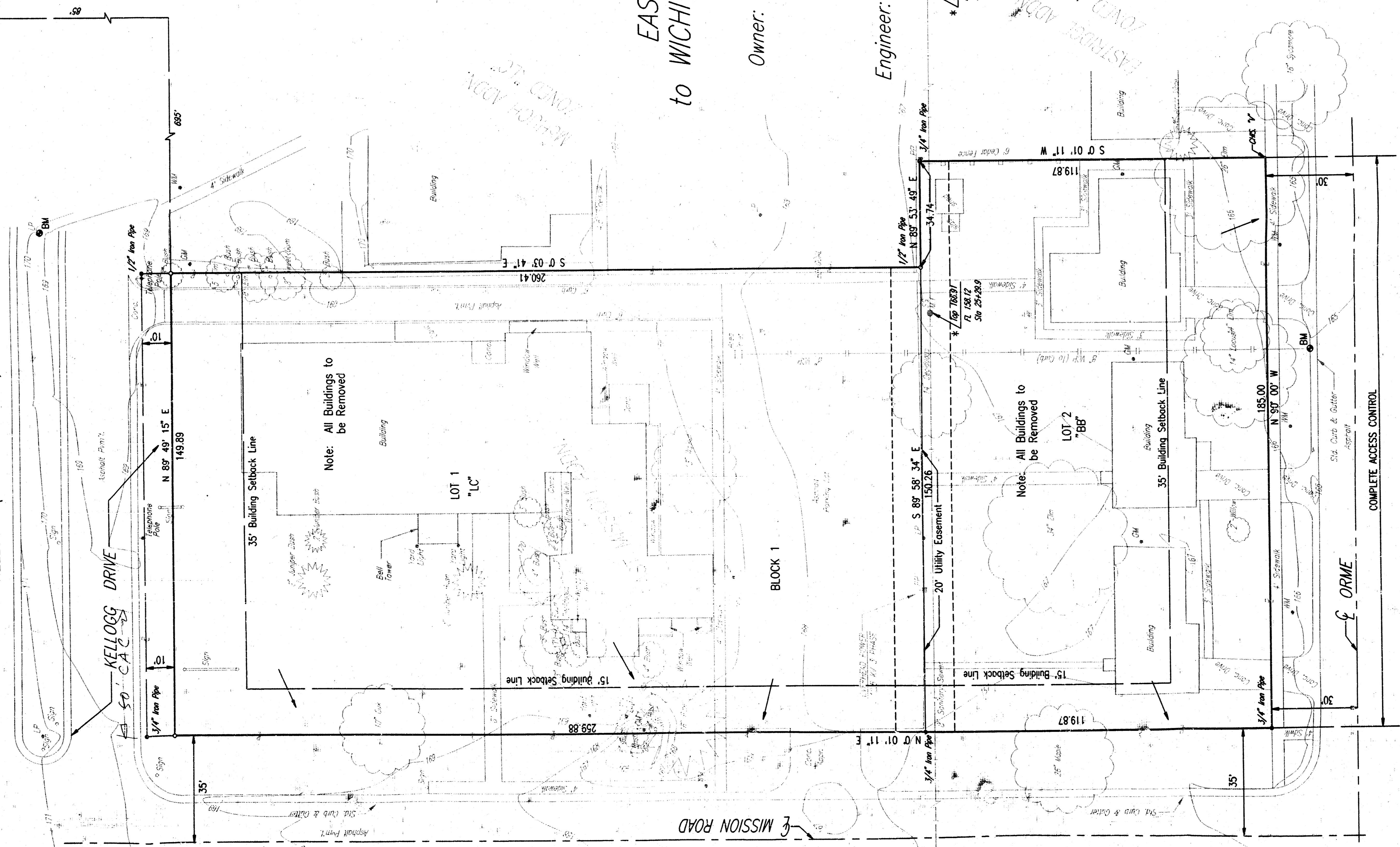


N 1/4 Corner SEC. 30, 127S, R2E
of 6th P.M.

KELLOGG (U.S. 54 HIGHWAY)



Scale 1" = 20'
 August 1, 1994
 O = Set 3/4" I.P.
 ● = Iron Fd.
 * = Record Data Not Field Verified

B.M. Chis. \square T/C West Side Mission St.
 180 Feet \pm North of Centerline Orme
 ELEV. 167.265 City Datum.

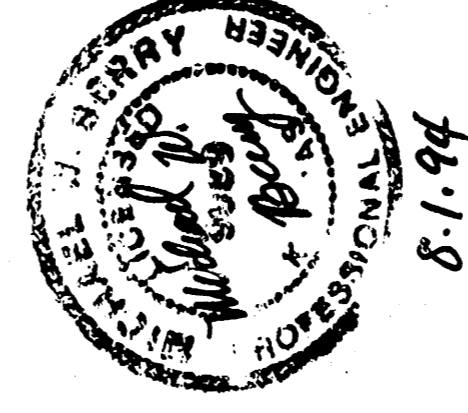
B.M. Chis. \square T/C North Side Orme
 160 Feet \pm East of Centerline Mission
 ELEV. 165.36 City Datum.

Wichita

**DRAINAGE PLAN OF
 EAST MISSION 2ND ADDITION
 to WICHITA, SEDGWICK COUNTY, KANSAS.**

Owner: *Evangelical Lutheran Church
 of the Reformation, Inc.
 c/o Mike Buxton
 314 Rutan, Wichita, KS 67208*

Engineer: *Professional Engineering Consultants p.a.
 303 S. Topeka, Wichita, KS 67202*



NOTE: All lots shall be graded to drain to public streets, public storm sewers, via drives, flumes, private storm sewers or other approved drainage facilities.