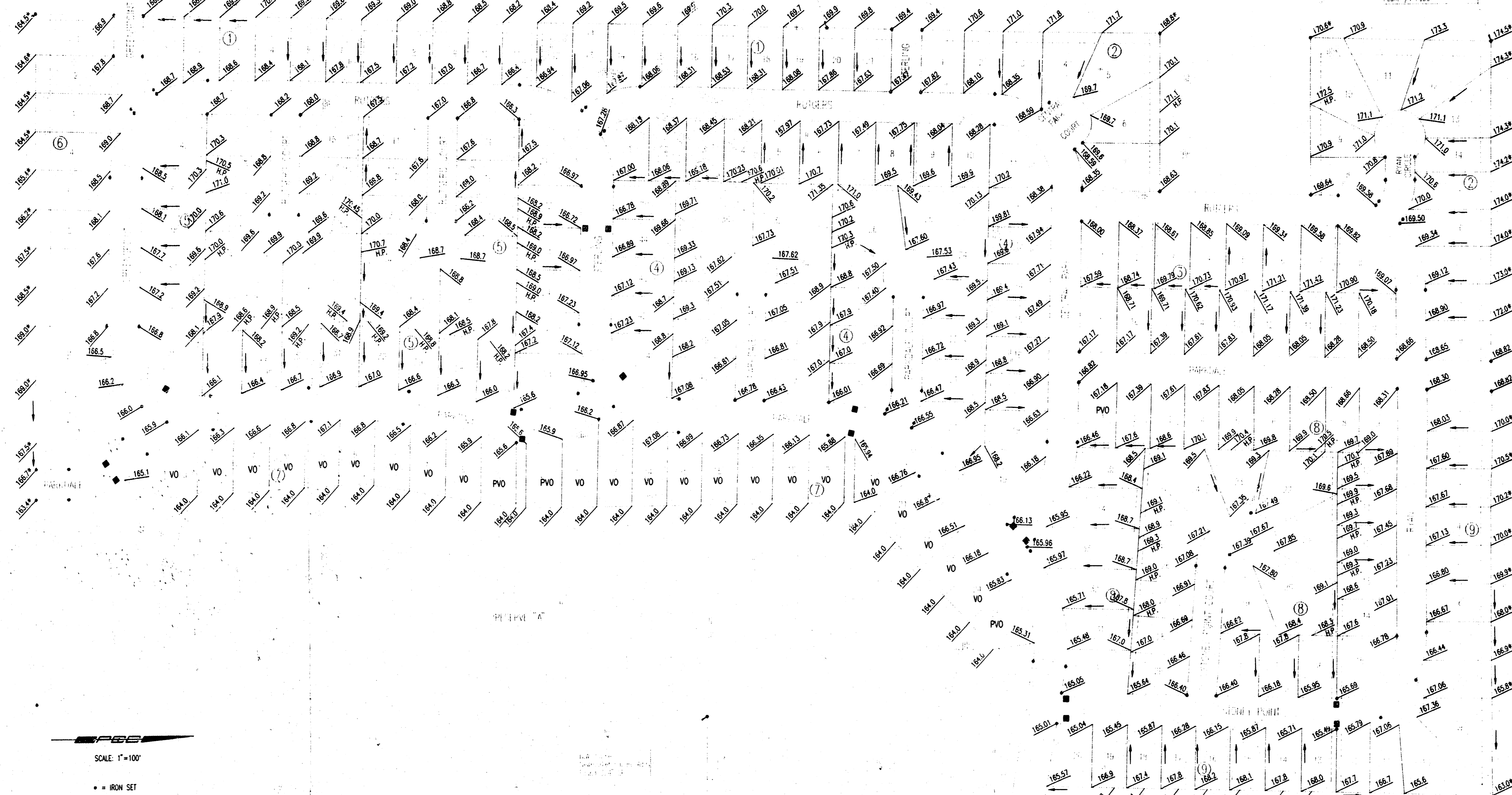


FOUR CORNER LOT GRADING



SCALE: 1"=100'

• = IRON SET

B.M.: CITY OF WICHITA STD BENCH MARK DISC 64" EAST AND 99" SOUTH OF THE INTERSECTION OF THE CENTERLINES MAIZE ROAD AND 21ST STREET NORTH.
ELEV.=164.3 CITY DATUM
ELEV.=1351.7 M.S.L.

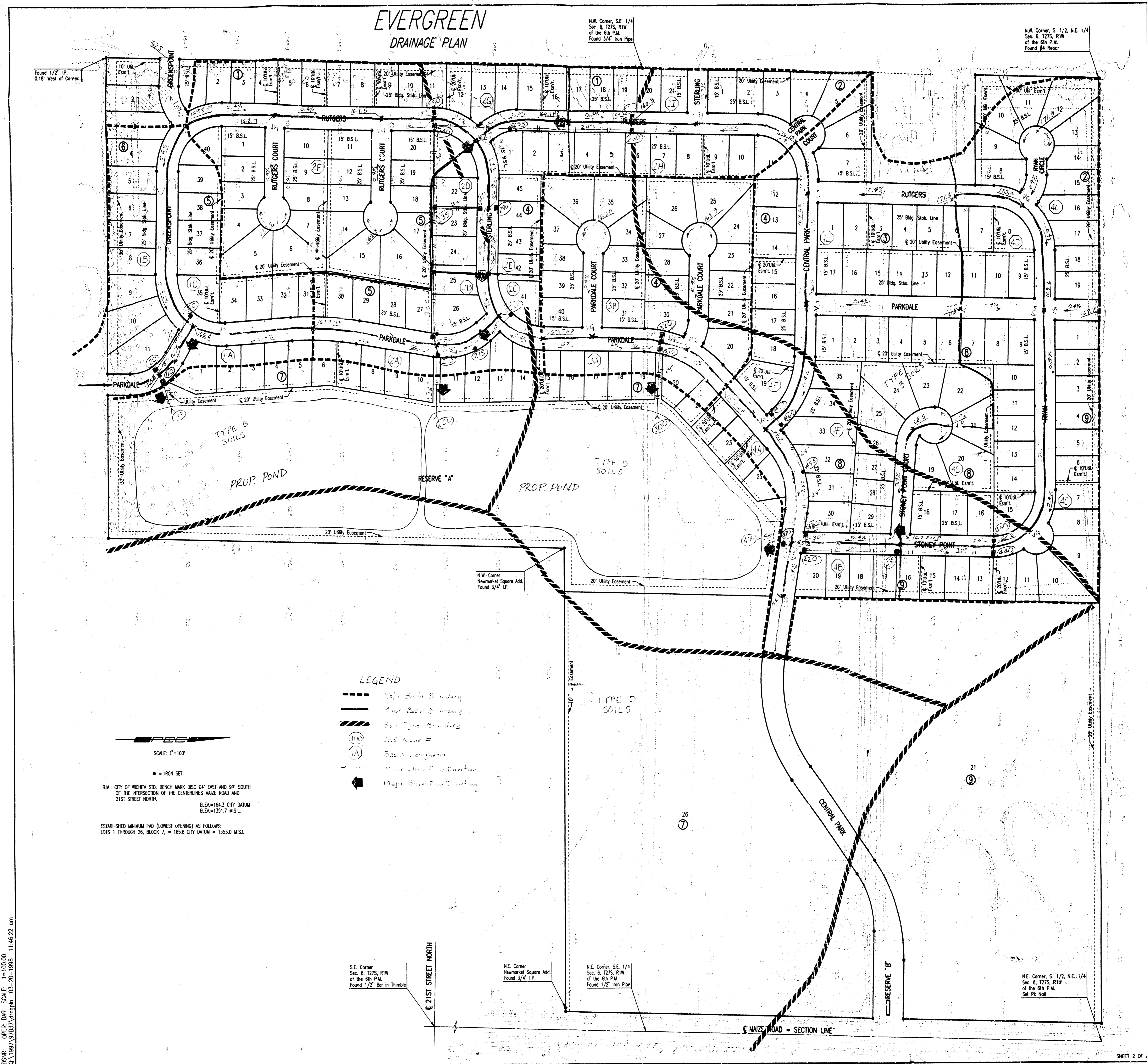
ESTABLISHED MINIMUM PVO (LOWEST OPENING) AS FOLLOWS:
LOTS 1 THROUGH 26, BLOCK 7, = 165.6 CITY DATUM = 1353.0 M.S.L.

- LEGEND**
- * MATCH EXISTING ELEVATION
 - HP HIGH POINT
 - VO VIEW-OUT BASEMENT LOT
 - PVO POSSIBLE VIEW-OUT BASEMENT LOT
 - STORM WATER SEWER
 - FLOW DIRECTION

MAZUR ENGINEERS

EVER GREEN ADDN

EVERGREEN DRAINAGE PLAN



N.W. Corner, S.E. 1/4
Sec. 6, T27S, R1W
of the 6th P.M.
Found 3/4" Iron Pipe

N.W. Corner, S. 1/2, NE. 1/4
Sec. 6, T27S, R1W
of the 6th P.M.
Found #4 Rebar

Found 1/2" I.P.
0.18' West of Corner

N.W. Corner
Newmarket Square Add.
Found 3/4" I.P.

- LEGEND**
- 1/2" Basin Boundary
 - 4" or 6" Basin Boundary
 - Soil Type Boundary
 - (A) Basins Area #
 - Basin Lot Lines
 - Major Storm Flow Direction

SCALE: 1"=100'

• = IRON SET

B.M.: CITY OF WICHITA STD. BENCH MARK DISC 64' EAST AND 99' SOUTH
OF THE INTERSECTION OF THE CENTERLINES MAIZE ROAD AND
21ST STREET NORTH.
ELEV.=164.3 CITY DATUM
ELEV.=1351.7 M.S.L.

ESTABLISHED MINIMUM FAD (LOWEST OPENING) AS FOLLOWS:
LOTS 1 THROUGH 26, BLOCK 7, = 165.6 CITY DATUM = 1353.0 M.S.L.

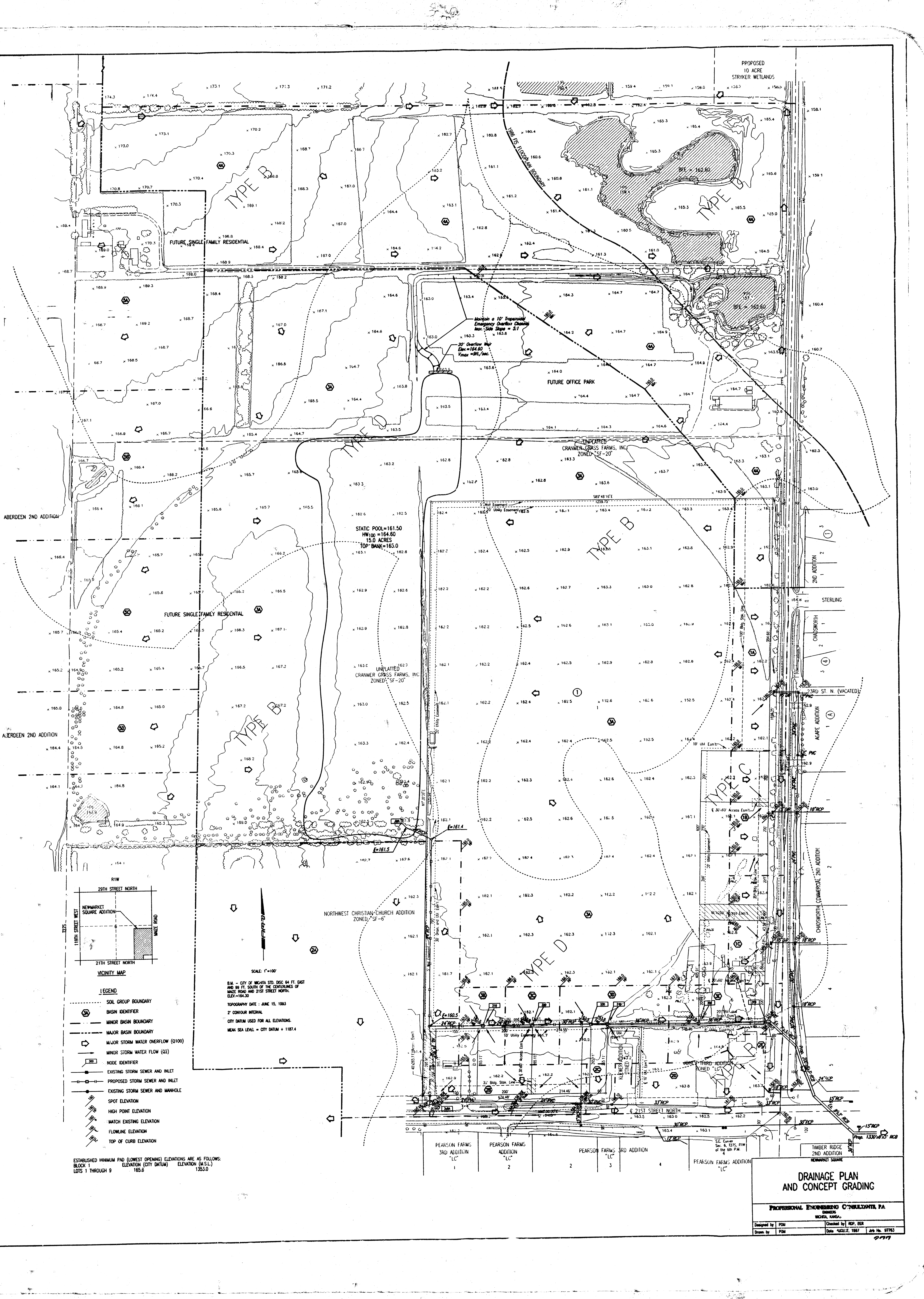
S.E. Corner
Sec. 6, T27S, R1W
of the 6th P.M.
Found 1/2" Bar in Thumb

N.E. Corner
Newmarket Square Add.
Found 3/4" I.P.

N.E. Corner, S.E. 1/4
Sec. 6, T27S, R1W
of the 6th P.M.
Found 1/2" Iron Pipe

N.E. Corner, S. 1/2, NE. 1/4
Sec. 6, T27S, R1W
of the 6th P.M.
Set Pk. Nail

OSWS - GSES, DWP, ESLE, 1-100.00
 0\1997\97537\drainplan_03-20-1998 11:46:22 am



PROPOSED
10 ACRE
STRYKER WETLANDS

TYPE B

TYPE C

TYPE B

TYPE C

TYPE D

FUTURE SINGLE FAMILY RESIDENTIAL

FUTURE OFFICE PARK

UNPLATTED
CRANMER GRASS FARMS, INC.
ZONED "SF-20"

UNPLATTED
CRANMER GRASS FARMS, INC.
ZONED "SF-20"

STATIC POOL = 161.50
HW100 = 164.60
15.0 ACRES
TOP BANK = 163.0

FUTURE SINGLE FAMILY RESIDENTIAL

NORTHWEST CHRISTIAN CHURCH ADDITION
ZONED "SF-6"

STERLING

CHADSWORTH

SRD ST. N. (VACATED)

ACAFE ADDITION

PC

CHADSWORTH COMMERCIAL 2ND ADDITION

15' RCP

15' RCP

15' RCP

15' RCP

15' RCP

15' RCP

15' RCP

15' RCP

15' RCP

15' RCP

15' RCP

15' RCP

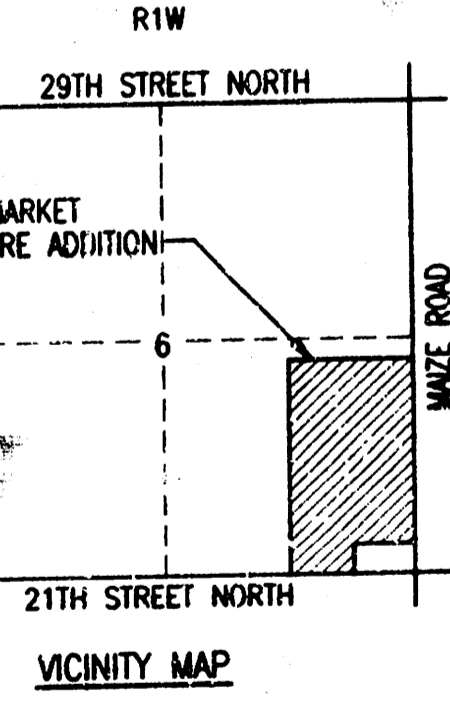
15' RCP

15' RCP

15' RCP

15' RCP

15' RCP



- LEGEND**
- SOIL GROUP BOUNDARY
 - ⊙ BASIN IDENTIFIER
 - MINOR BASIN BOUNDARY
 - MAJOR BASIN BOUNDARY
 - ⊙ MAJOR STORM WATER OVERFLOW (Q100)
 - ⊙ MINOR STORM WATER FLOW (Q2)
 - ⊙ NODE IDENTIFIER
 - EXISTING STORM SEWER AND INLET
 - PROPOSED STORM SEWER AND INLET
 - EXISTING STORM SEWER AND MANHOLE
 - ⊙ SPOT ELEVATION
 - ⊙ HIGH POINT ELEVATION
 - MATCH EXISTING ELEVATION
 - FLOWLINE ELEVATION
 - TOP OF CURB ELEVATION

SCALE: 1"=100'

B.M. - CITY OF WICHITA STD. DISC 64 FT. EAST AND 99 FT. SOUTH OF THE CENTERLINES OF MAIZE ROAD AND 21ST STREET NORTH. ELEV=164.30

TOPOGRAPHY DATE: JUNE 15, 1993

2' CONTOUR INTERVAL

CITY DATUM USED FOR ALL ELEVATIONS.

MEAN SEA LEVEL = CITY DATUM + 1187.4

ESTABLISHED MINIMUM PAD (LOWEST OPENING) ELEVATIONS ARE AS FOLLOWS:
BLOCK 1 ELEVATION (CITY DATUM) ELEVATION (M.S.L.)
LOTS 1 THROUGH 9 165.6 135.0

PEARSON FARMS 3RD ADDITION "LC"	PEARSON FARMS ADDITION "LC"	PEARSON FARMS 3RD ADDITION	PEARSON FARMS 3RD ADDITION	PEARSON FARMS 3RD ADDITION	PEARSON FARMS ADDITION "LC"	TIMBER RIDGE 2ND ADDITION NEWMARKET SQUARE
1	2	2	3	4		

DRAINAGE PLAN AND CONCEPT GRADING

PROFESSIONAL ENGINEERING CONSULTANTS, P.A.
DIANEES WICHITA, KANSAS

Designed by: PDM	Checked by: REP, EER
Drawn by: PDM	Date: AUGUST, 1997 Job No. 97783