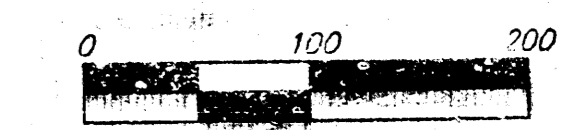
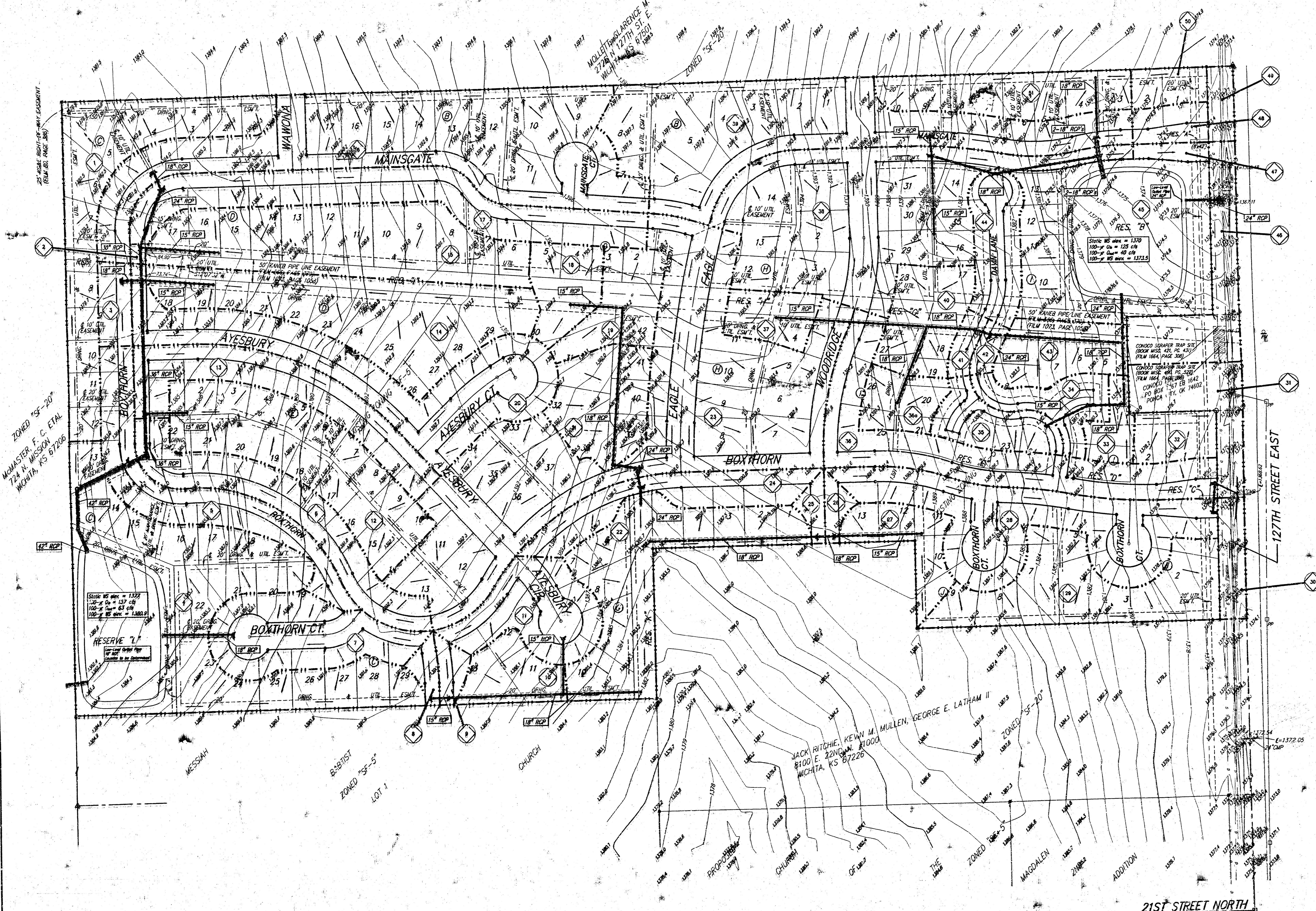


DRAINAGE PLAN THE FAIRMONT

AN ADDITION TO WICHITA, SEDGWICK COUNTY, KANSAS



LOT(S)	BLOCK	CITY DATUM	ELEVATION
14,15,16,22,23	C	196.5	1,381.9
5-10	F	196.5	1,381.3
5-7, 9-13	H	196.0	1,373.4

BENCHMARK
 GREENWICH AND 21ST NORTH
 CITY OF WICHITA BENCHMARK DISK
 41' SOUTH AND 58' WEST OF IRON C.I.R. LINE BORN
 12.0' SW OF ASPHALT, 14.2' EAST OF FACE P.P.
 12.0' WEST OF FACE P.P.
 ELEVATION = 123.58 (CITY DATUM), 1361.58 NGVD

COUNTY "C" CUT, SOUTH HEADWALL
 1/2 MILE WEST OF 127TH ST. EAST
 ON 37TH STREET NORTH
 ELEV. = 185.83 (CITY DATUM), 1373.23 NGVD

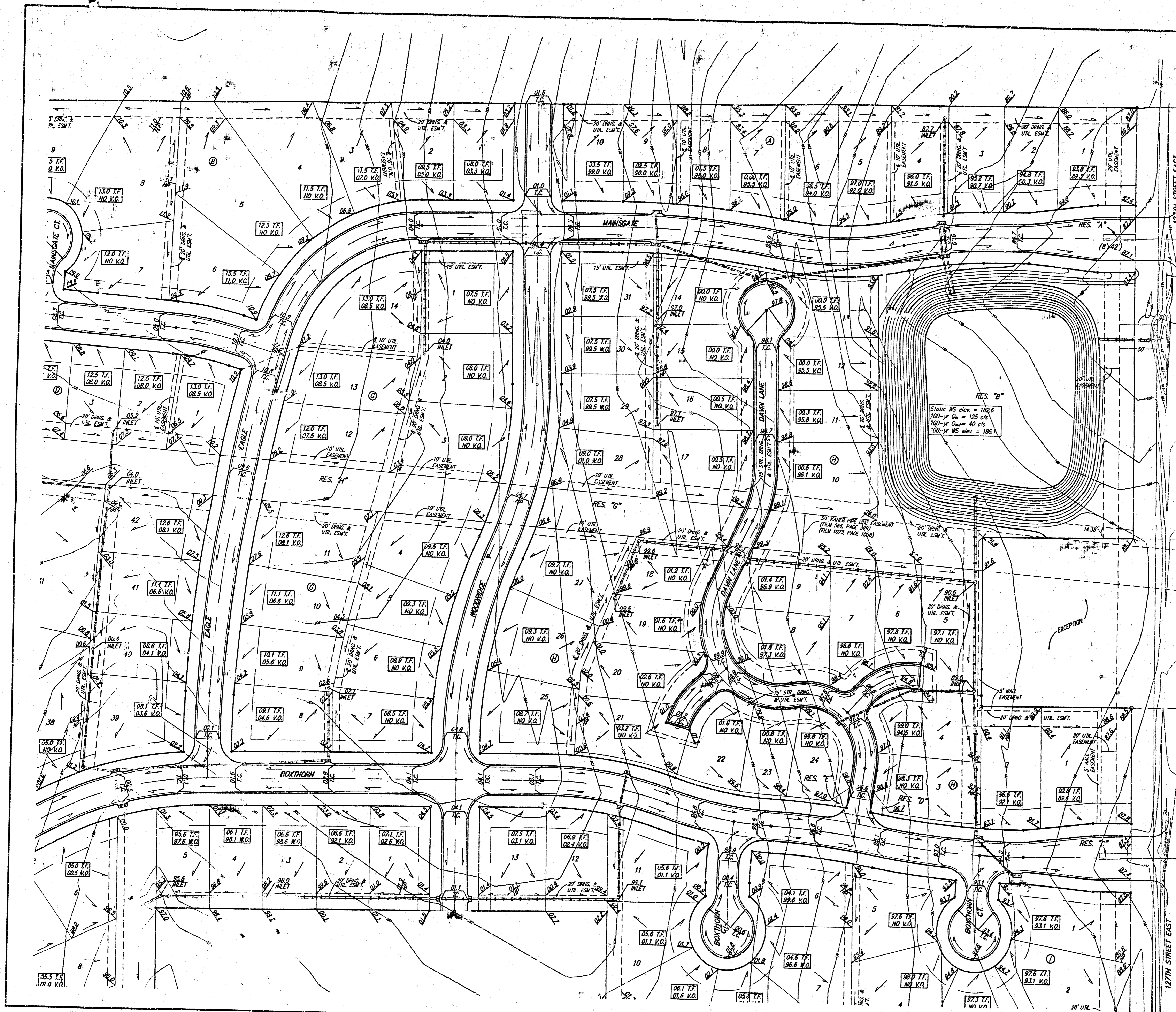
TOP OF IRON - SE COR. SE 1/4 SEC. 3
 TWP. 27-S, R-2-E, (127TH ST. EAST &
 21ST ST. NORTH)
 ELEV. = 198.01 (CITY DATUM), 1385.41 NGVD

Basin	Area acres	Runoff Coefficient			Peak Flowrate		
		2-yr in/hr	5-yr in/hr	100-yr in/hr	2-yr cfs	5-yr cfs	100-yr cfs
1	2.2	0.50	0.54	0.76	4.2	5.4	12
2	0.1	0.50	0.54	0.76	0.2	0.2	0.6
3	0.3	0.50	0.54	0.76	0.6	0.7	1.7
4	0.0	0.61	0.66	0.82	1.2	1.5	4.0
5	1.4	0.50	0.54	0.76	2.7	3.4	10
6	1.5	0.50	0.54	0.76	2.9	3.7	9.4
7	1.5	0.50	0.54	0.76	2.9	3.7	9.4
8	0.2	0.50	0.54	0.76	0.4	0.5	1.1
9	0.2	0.50	0.54	0.76	0.4	0.5	1.1
10	0.6	0.50	0.54	0.76	1.1	1.5	3.4
11	1.2	0.50	0.54	0.76	2.3	3.0	6.7
12	2.3	0.50	0.54	0.76	4.4	5.7	13
13	1.5	0.50	0.54	0.76	2.9	3.7	9.4
14	2.7	0.50	0.54	0.76	3.2	4.1	15
15	2.7	0.50	0.54	0.76	3.2	4.1	15
16	4.6	0.50	0.54	0.76	8.8	11	26
17	2.2	0.50	0.54	0.76	4.2	5.4	12
18	0.7	0.50	0.54	0.76	1.3	1.7	3.5
19	0.6	0.50	0.54	0.76	1.3	2.0	4.5
20	2.6	0.50	0.54	0.76	5.0	6.4	15
21	1.7	0.50	0.54	0.76	3.1	2.7	6.2
22	2.2	0.50	0.54	0.76	4.2	5.4	12
23	5.7	0.50	0.54	0.76	12	16	35
24	1.0	0.50	0.54	0.76	1.9	2.5	6.6
25	0.2	0.50	0.54	0.76	0.4	0.5	1.1
26	0.2	0.50	0.54	0.76	0.4	0.5	1.1
27	0.7	0.50	0.54	0.76	1.3	1.7	3.9
28	2.5	0.50	0.54	0.76	4.8	6.2	14
29	1.9	0.50	0.54	0.76	3.6	4.7	11
30	0.4	0.50	0.54	0.76	0.8	1.0	2.2
31	0.9	0.50	0.54	0.76	1.7	2.2	5.0
32	0.5	0.50	0.54	0.76	1.0	1.2	2.8
33	0.1	0.50	0.54	0.76	0.6	0.7	1.7
34	0.6	0.50	0.54	0.76	1.1	1.5	3.4
35	0.6	0.50	0.54	0.76	1.1	1.5	3.4
36	2.1	0.50	0.54	0.76	3.0	3.9	9.4
36a	0.5	0.50	0.54	0.76	1.0	1.2	2.8
37	0.5	0.50	0.54	0.76	1.0	1.2	2.8
38	4.1	0.50	0.54	0.76	7.9	10	23
39	2.9	0.50	0.54	0.76	5.5	7.1	17
40	0.9	0.50	0.54	0.76	1.7	2.2	5.0
41	0.2	0.50	0.54	0.76	0.4	0.5	1.1
42	0.7	0.50	0.54	0.76	1.3	1.7	3.9
43	0.6	0.50	0.54	0.76	1.1	1.5	3.4
44	0.6	0.50	0.54	0.76	1.1	1.5	3.4
45	3.3	0.61	0.66	0.82	8.0	9.9	20
46	1.1	0.50	0.54	0.76	2.1	2.7	6.2
47	0.1	0.50	0.54	0.76	0.2	0.2	0.6
48	0.7	0.50	0.54	0.76	1.3	1.7	3.9
49	0.7	0.50	0.54	0.76	1.3	1.7	3.9
50	0.3	0.50	0.54	0.76	0.6	0.7	1.7
51	1.1	0.50	0.54	0.76	2.1	2.7	6.2

NOTES:
 Calculations have been omitted from this submittal. Refer to the original submitted for "Drainage Plan" for THE FAIRMONT for hydraulic pond routings.

27 NOVEMBER 2001

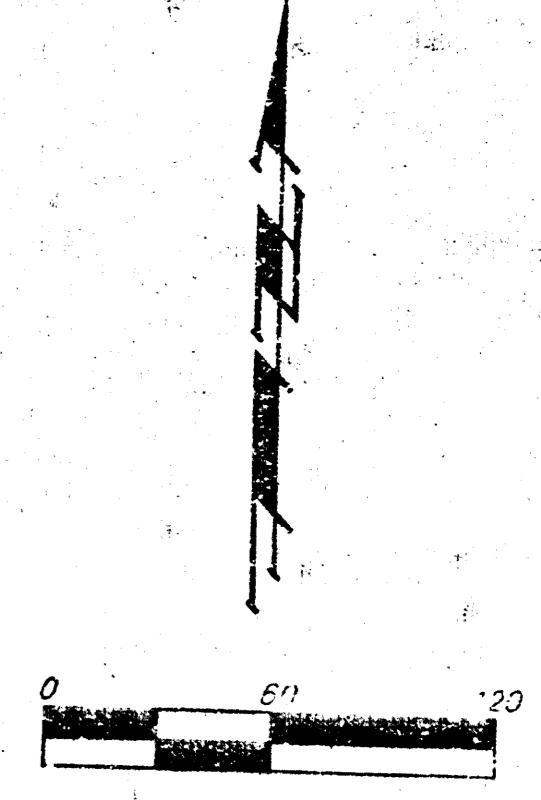
BAUGHMAN COMPANY P. A.
 ENGINEERING, SURVEYING, & PLANNING
 316-262-7271 • 316-262-7272 • 316-262-7273
 1711 THE FAIRMONT DRIVE, FAIRMONT, KANSAS 67201



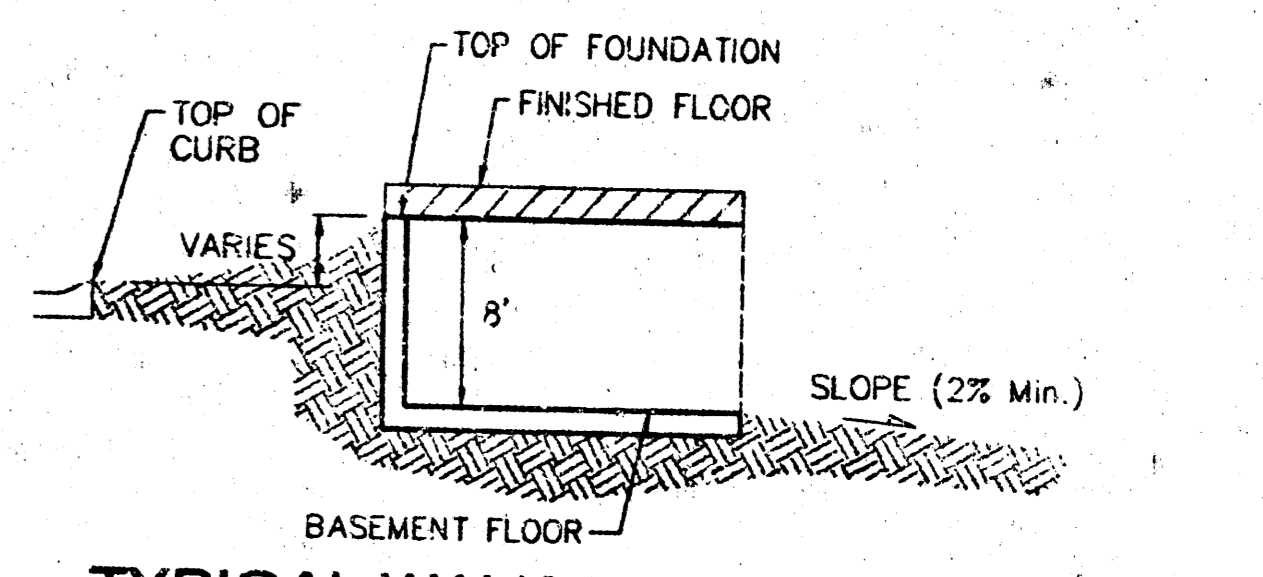
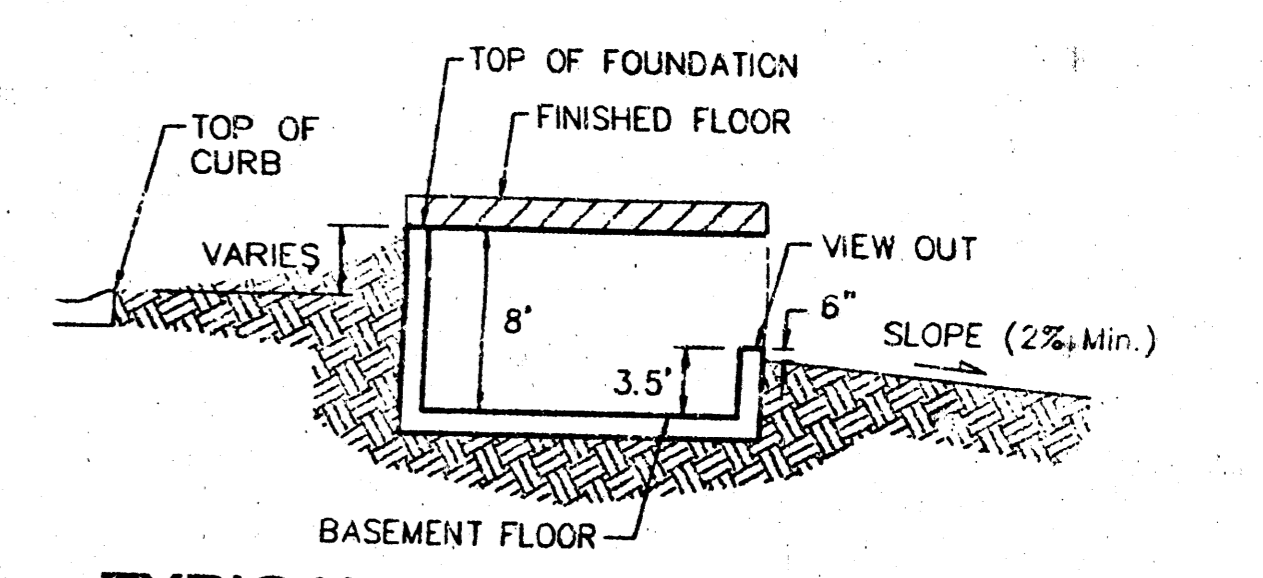
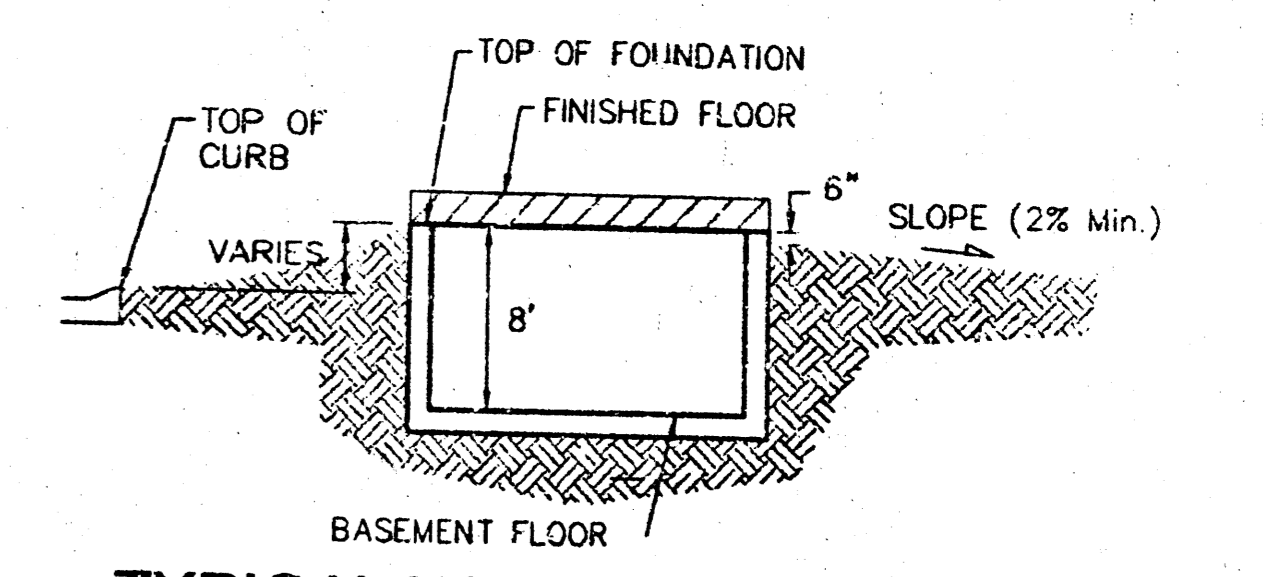
BENCHMARKS
 GREYHORN AND 21ST NORTH
 CITY OF WICHITA BENCHMARK DISC
 41' SOUTH AND 53' WEST OF HIGH CUR. LINE BENCH.
 17.0' SW OF FACE P.P.
 ELEVATION = 173.58 (CITY DATUM), 1361.38 NGVD

COUNTY CUT, SOUTH HEADWALL
 1/2 MILE WEST OF 127TH ST. EAST
 ON 37TH STREET NORTH
 ELEV. = 185.83 (CITY DATUM), 1373.23 NGVD

TOP OF IRON - SE COR. SEC. 3
 TWP. 27-S, R. 9-E, L. (127TH ST. EAST &
 21ST ST. NORTH)
 ELEV. = 198.01 (CITY DATUM), 1385.41 NGVD



50' CONDUIT FURNISH
 COMPANY EASEMENT
 1/4" CONC. ROAD 77 PG.
 (FILM 808, PG. 553)
 (FILM 2001, PG. 581,
 (FILM 1884, PG. 308)



NOTES:
 Proposed Top of Foundation Elevations are Shown On
 Plans. Contractor to Set Finished Floor Elevations.
 All Street Elevations Shown on Plans are for Top of
 Curb (Full-Height).
 This Grading Plan is designed with View-Outs.
 Elevations Shown at Rear of House (X.X' V.O.)
 Lot dimensions have been omitted on this plan,
 refer to the recorded plat for this information.

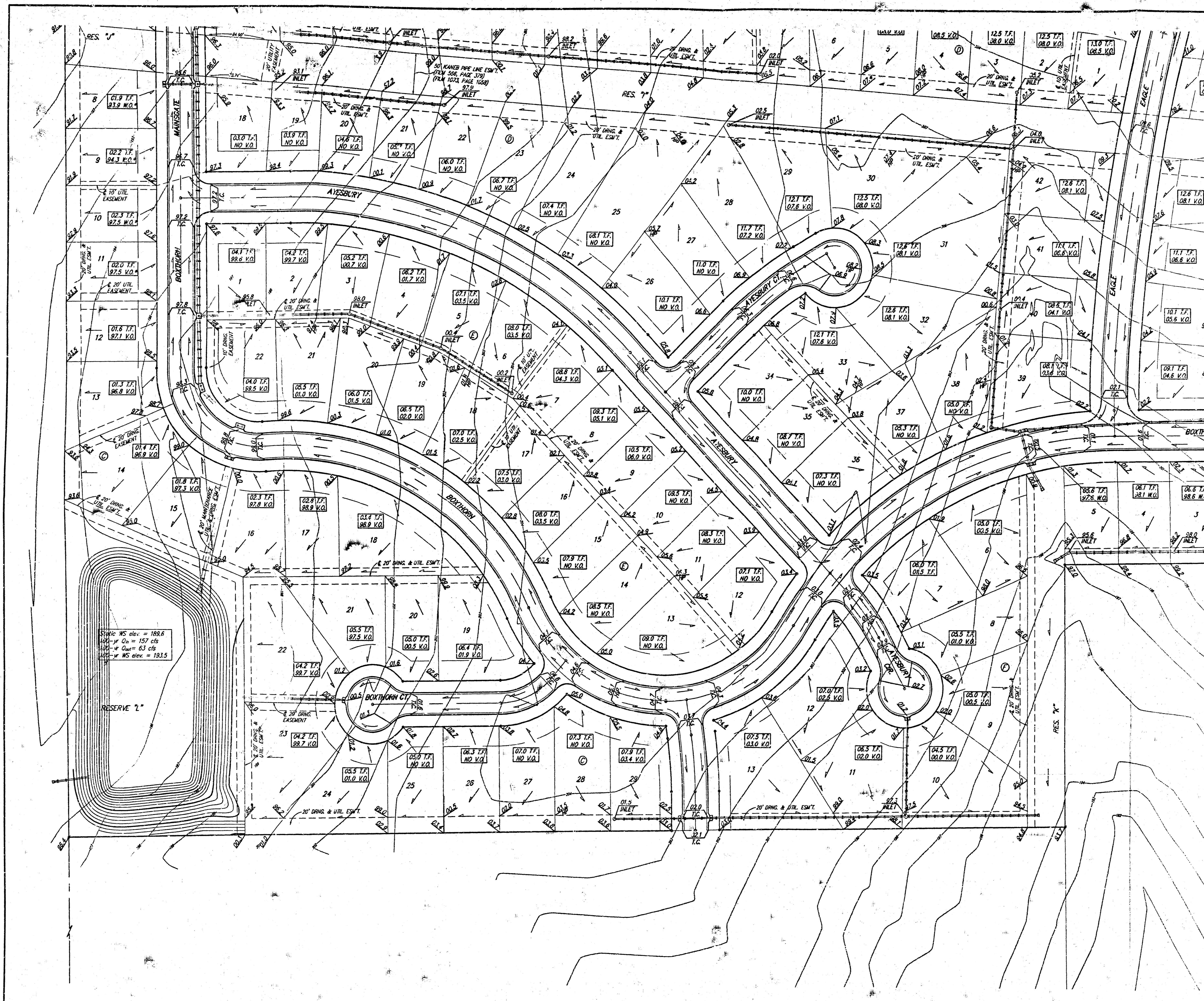
Revised Aug. 2, 2002 - BDT per N3W/SEP Lot 3, Ex 1
 Revised July 17, 2002 - BLC per N3W

THE FAIRMONT
MASTER GRADING PLAN
 WICHITA, KANSAS

BAUGHMAN COMPANY P.A.
 ENGINEERING, SURVEYING, & PLANNING
 316-282-7271 • 315 ELLIS • WICHITA, KANSAS 67211

PROJECT NUMBER: _____ SHEET: **2** OF **4**

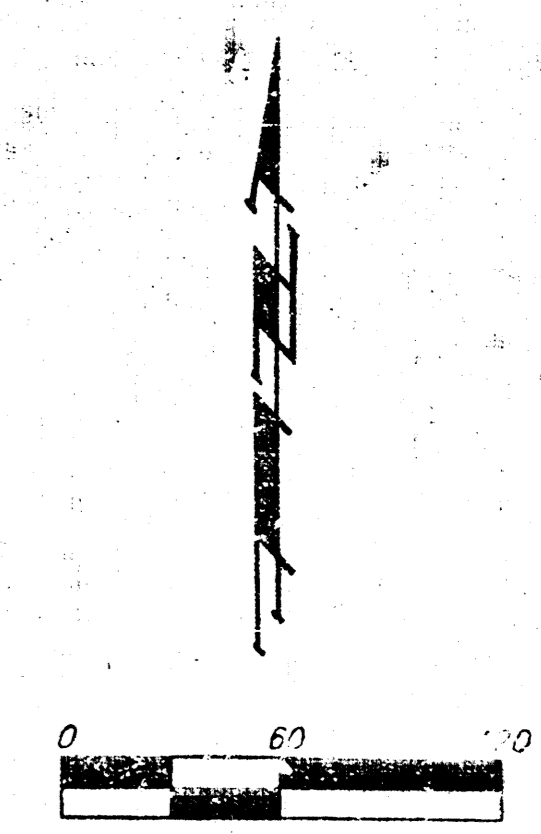
DESIGN	DRAWN	APPROVED	DATE	SCALE
	BLC		20FEB2002	NOTE



BENCHMARKS
 GREENWICH - 21ST NORTH
 CITY OF WICHITA BENCHMARK DISC
 41' SOUTH AND 58' WEST OF IRON CTR. LINE BOTH
 17.0' SW OF ASPHALT, 14.2' EAST OF FACE P.P.
 17.0' WEST OF FACE P.P.
 ELEVATION = 121.96 (CITY DATUM), 1361.38 NGVD

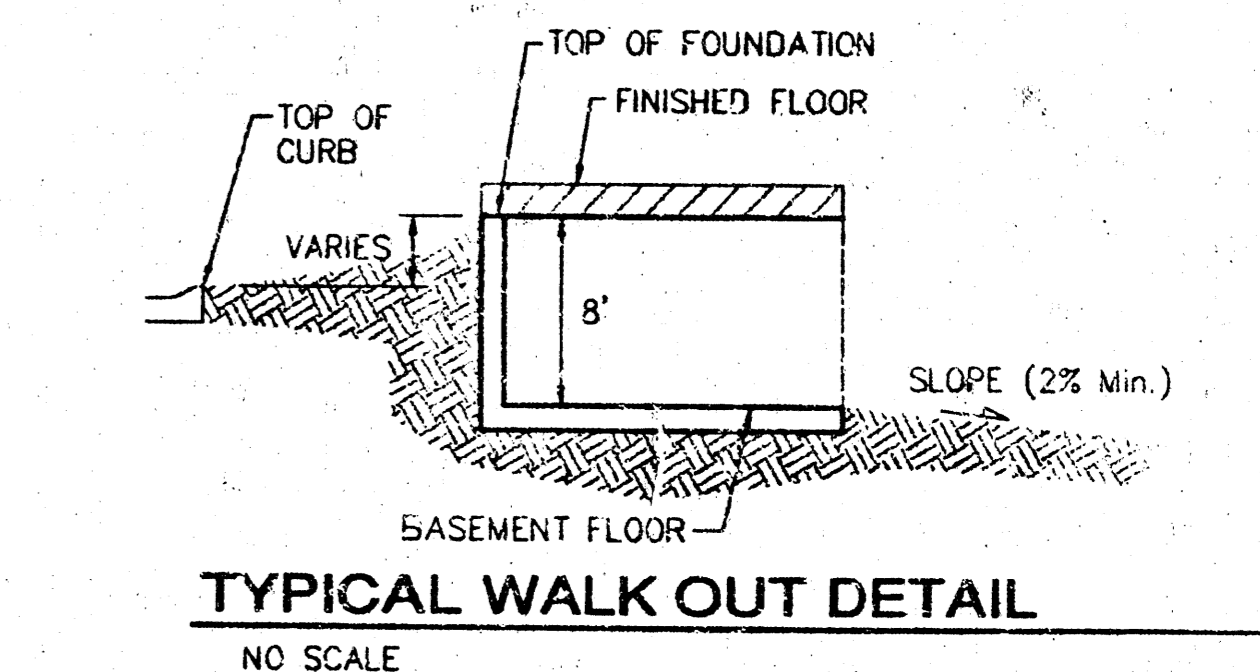
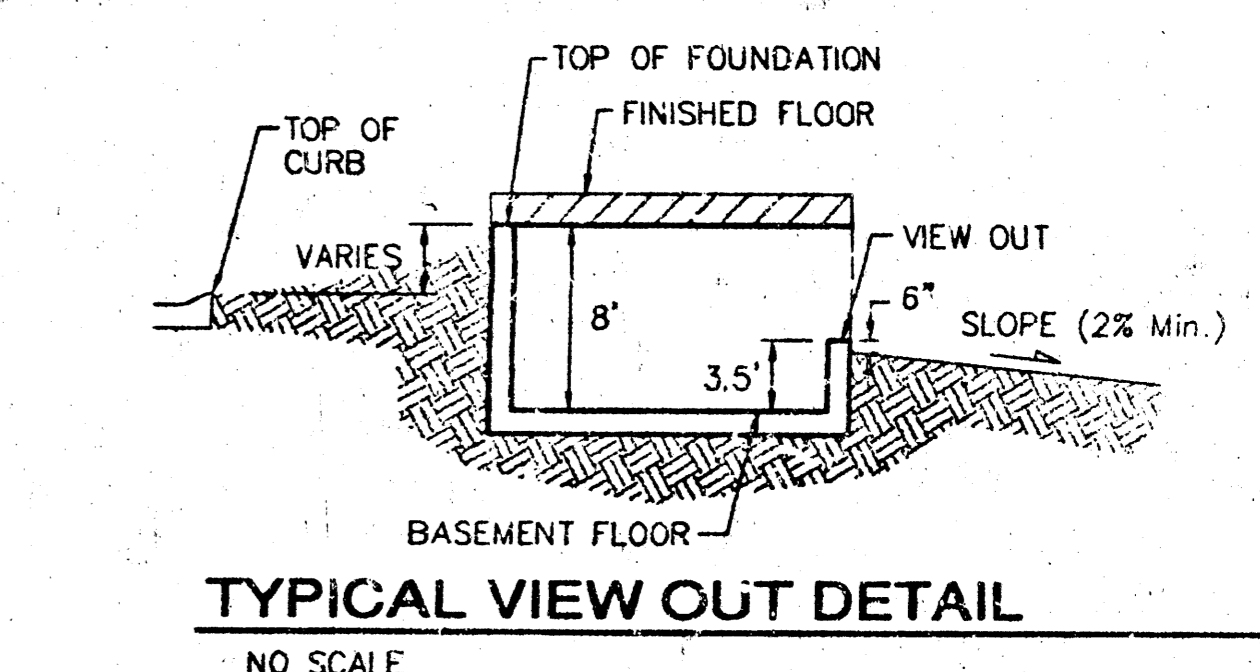
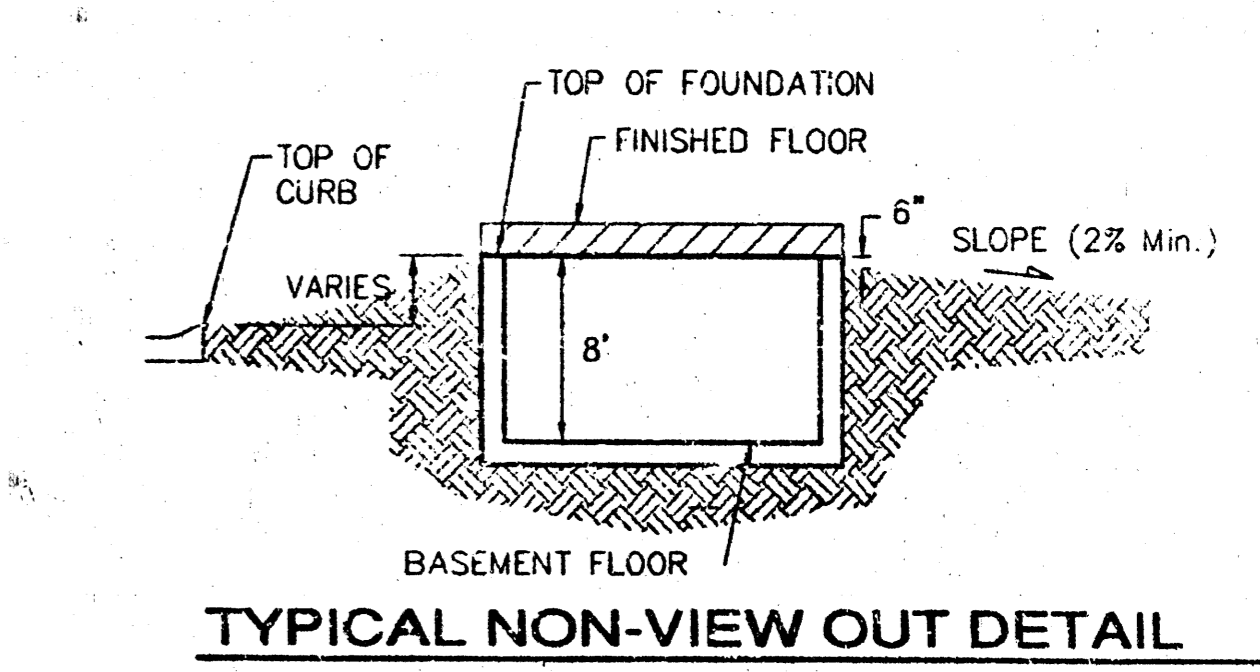
COUNTY "C" CUT, SOUTH HEADMALL
 1/2 MILE WEST OF 127TH ST. EAST
 ON 37TH STREET NORTH
 ELEV. = 165.83 (CITY DATUM), 1373.23 NGVD

TOP OF IRON - SE COR. SE 1/4, SEC. 3,
 TWP. 27-S, R-2-C (127TH ST. EAST &
 21ST ST. NORTH)
 ELEV. = 198.01 (CITY DATUM), 1355.41 NGVD



MINIMUM BUILDING PAD ELEVATIONS FOR
 LOWEST OPENING TO THE STRUCTURES

LOT(S)	BLOCK	CITY DATUM	NGVD
14,15,16,22,23	C	196.5	1,383.9
33,36,38,39,50	C	196.5	1,383.9
1-8	I	186.0	1,373.4
13	L	194.5	1,381.9



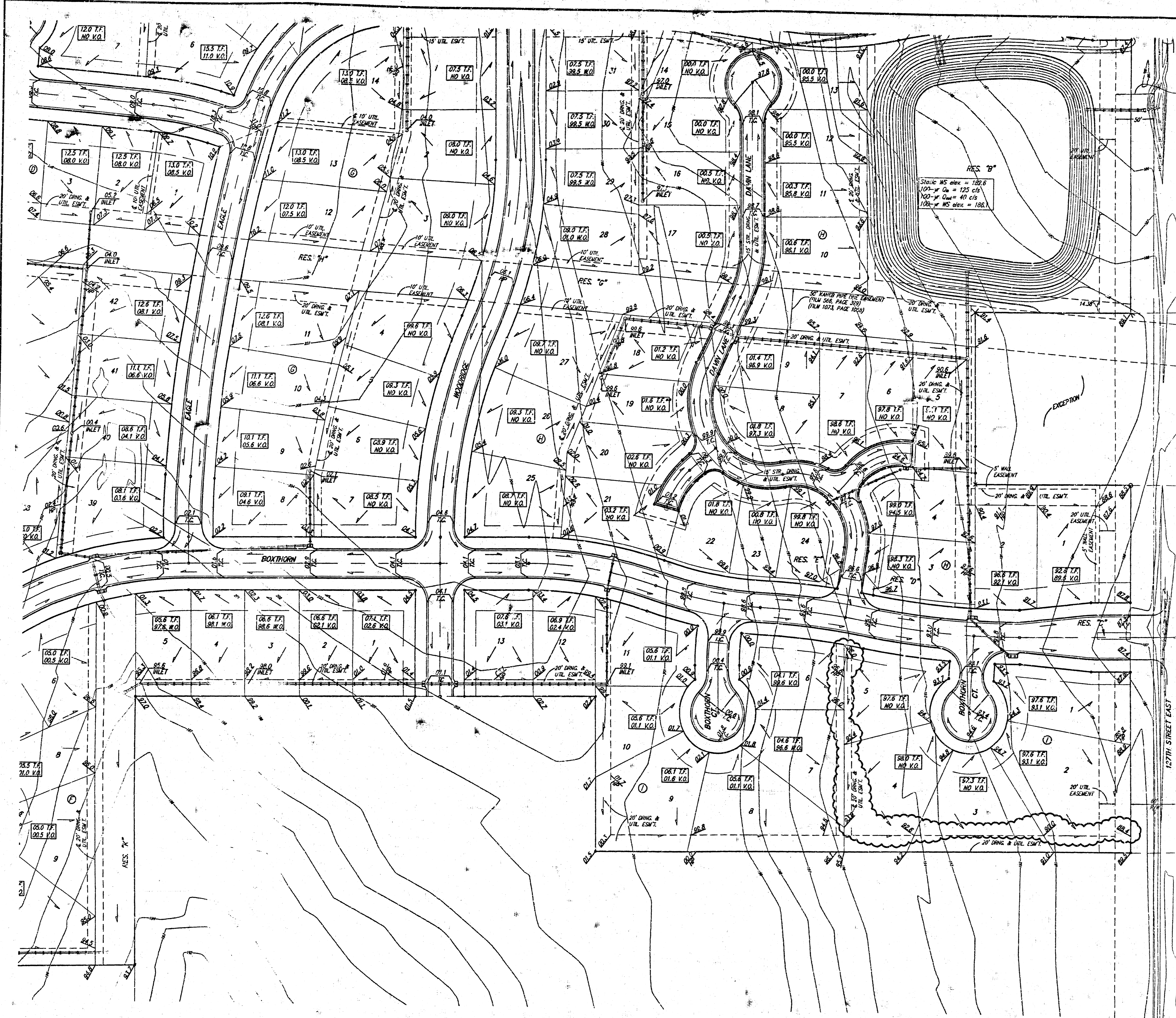
NOTES:
 Proposed Top of Foundation Elevations Are Shown On
 Plans. Contractor to Set Finished Floor Elevations.
 All Street Elevations Shown on Plans Are for Top of
 Curb (Full-Height).
 This Grading Plan is Designed with View-Outs.
 Elevations Shown at Rear of House (XXX V.O.)
 Lot dimensions have been omitted on this plan,
 refer to the recorded plat for this information.

THE FAIRMONT
MASTER GRADING PLAN
 WICHITA, KANSAS

BAUGHMAN COMPANY P.A.
 ENGINEERING, SURVEYING, & PLANNING
 316-262-2271 • 315 ELLIS • WICHITA, KANSAS 67211

DESIGN	DRAWN	APPROVED	DATE	SCALE	SHEET
	BLC		20/FEB/2002	NOTE	3

PROJECT NUMBER: 10642Z-02

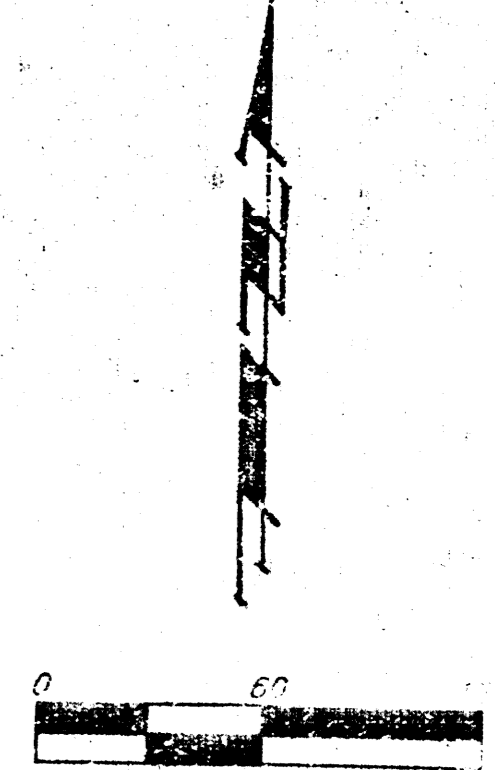


50' CONDUIT PIPELINE COMPANY EASEMENT (MISC. BOOK 27, PG. 48; FILM 606, PG. 353; FILM 2003, PG. 581; FILM 1664, PG. 309)

BENCHMARKS
 GREENWICH AND 21ST NORTH
 CITY OF WICHITA BENCHMARK DISC
 41' SOUTH AND 58' WEST OF IRON CTR. LINE BOTH
 12.0' SW OF A 14.2' EAST OF FACE P.P.
 12.0' WEST OF 7' x 9'
 ELEVATION = 123.98 (CITY DATUM), 1301.39 NGVD

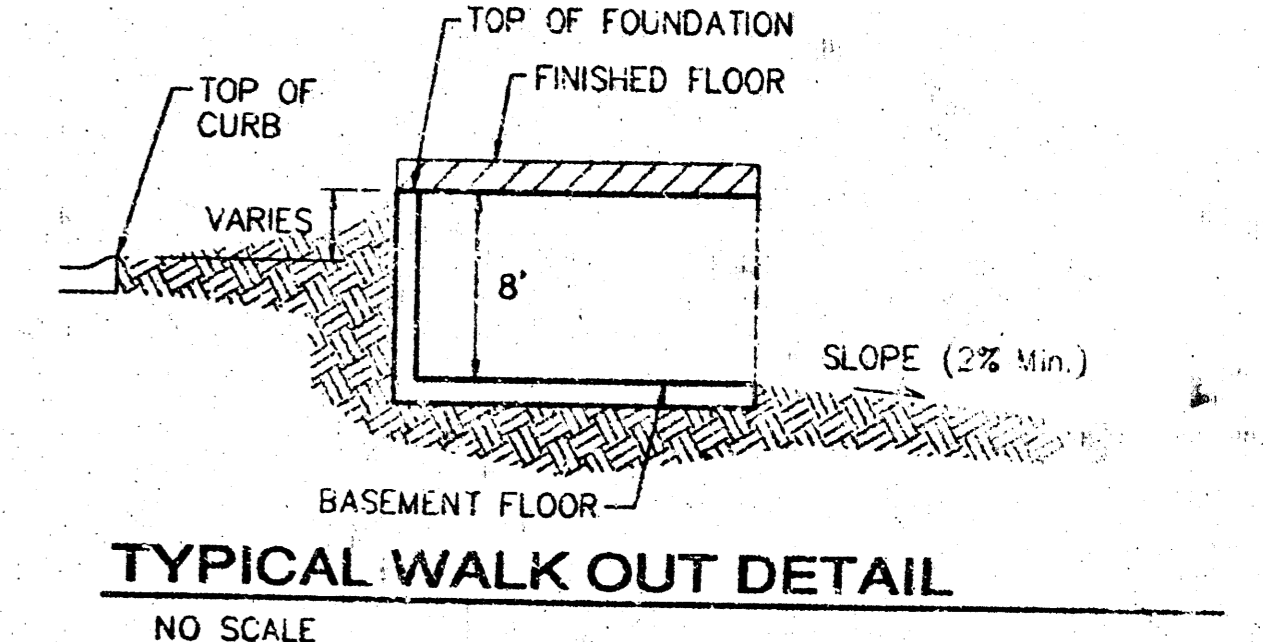
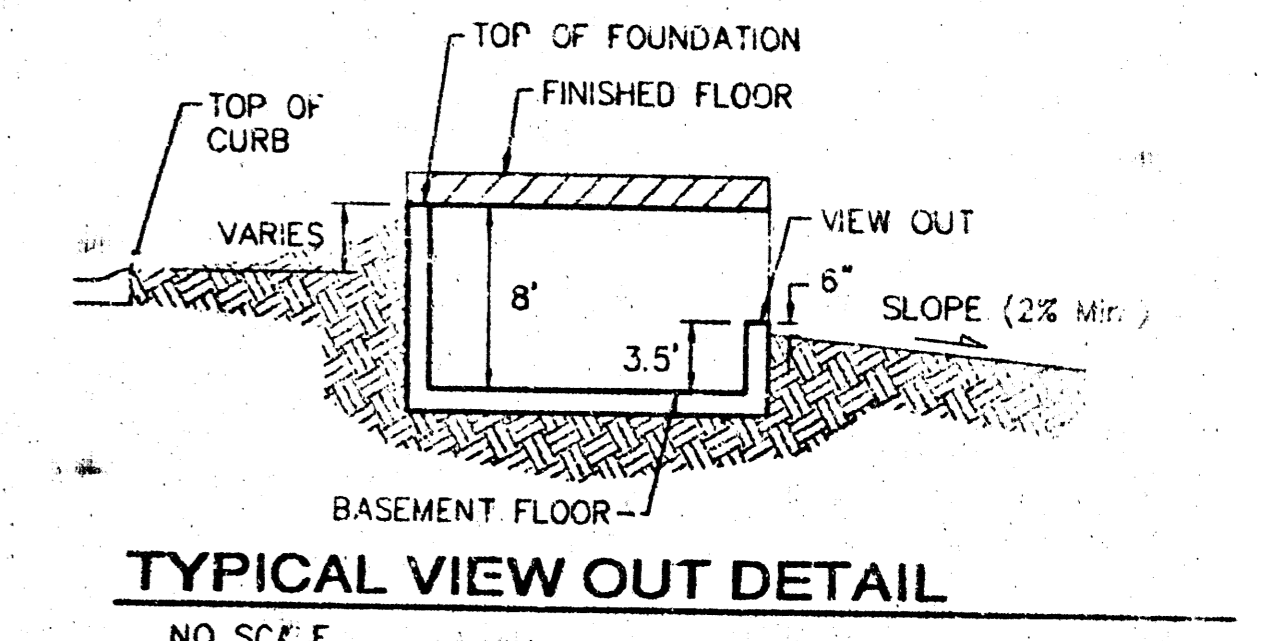
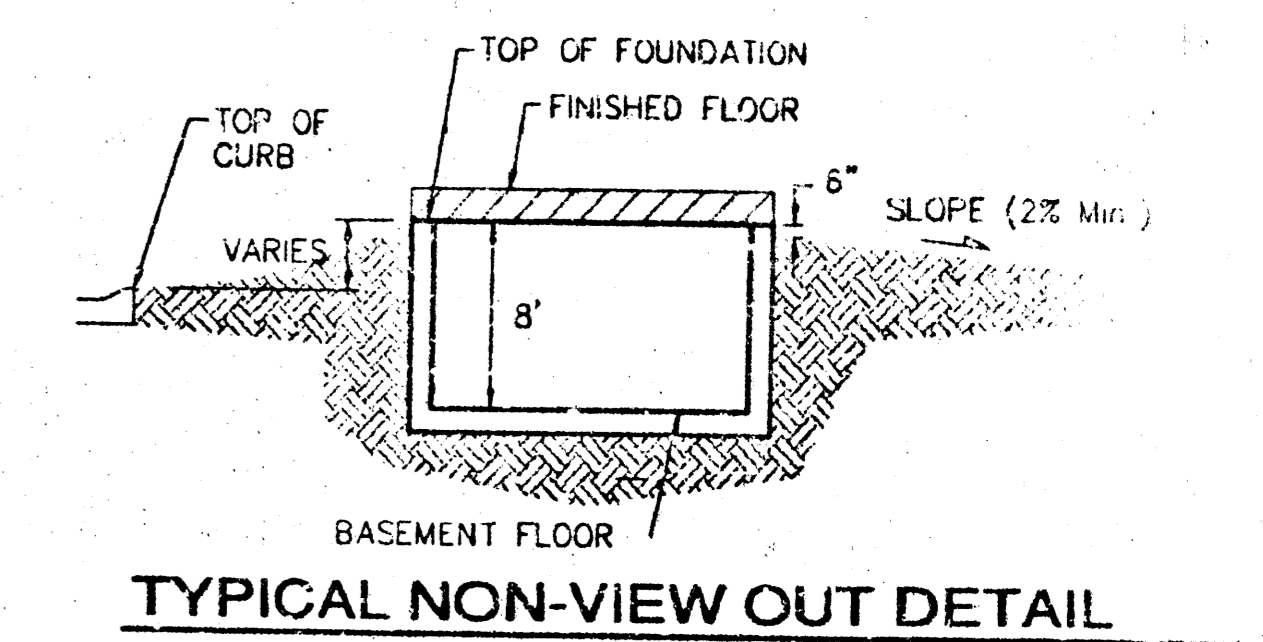
COUNTY "C" CUT, SOUTH HEADWALL,
 1/2 MILE WEST OF 127TH ST. EAST
 ON 37TH STREET NORTH
 ELEV. = 186.83 (CITY DATUM), 1373.23 NGVD

TOP OF IRON - SE COR. SE 1/4 SEC. 3,
 TWP. 27-S, R-2-E, (127TH ST. EAST &
 21ST ST. NORTH)
 ELEV. = 198.01 (CITY DATUM), 1385.41 NGVD



MINIMUM BUILDING PAD ELEVATIONS FOR LOWEST OPENING TO THE STRUCTURES

LOT(S)	BLOCK	ELEVATION CITY DATUM	NGVD
14,15,16,22,23	C	196.5	1383.9
35,36,38,39,50	C	196.5	1383.9
1-8	I	186.0	1373.4
13	L	194.5	1381.9



NOTES:
 Proposed Top of Foundation Elevations Are Shown On Plans. Contractor to Set Finished Floor Elevations.
 All Street Elevations Shown on Plans Are for Top of Curb (Full-Height). Typically Roll Curbs Are Lowered By (0.25) Feet.
 This Grading Plan is Designed with View-Outs & Walk-Outs.

Lot dimensions have been omitted on this plan, refer to the recorded plat for this information.

THE FAIRMONT
MASTER GRADING PLAN
 WICHITA, KANSAS

BAUGHMAN COMPANY P.A.
 ENGINEERING, SURVEYING, & PLANNING
 316-262-7271 • 315 ELLIS • WICHITA, KANSAS 67202

PROJECT NUMBER: _____ SHEET: **4**

DESIGN: _____ DRAWN: BLC APPROVED: _____ DATE: 20FEB2002 SCALE: NOTE