

THE FIRST CREDIT UNION ADDITION
(Drainage)

SKETCH PLAT THE FIRST CREDIT UNION ADDITION

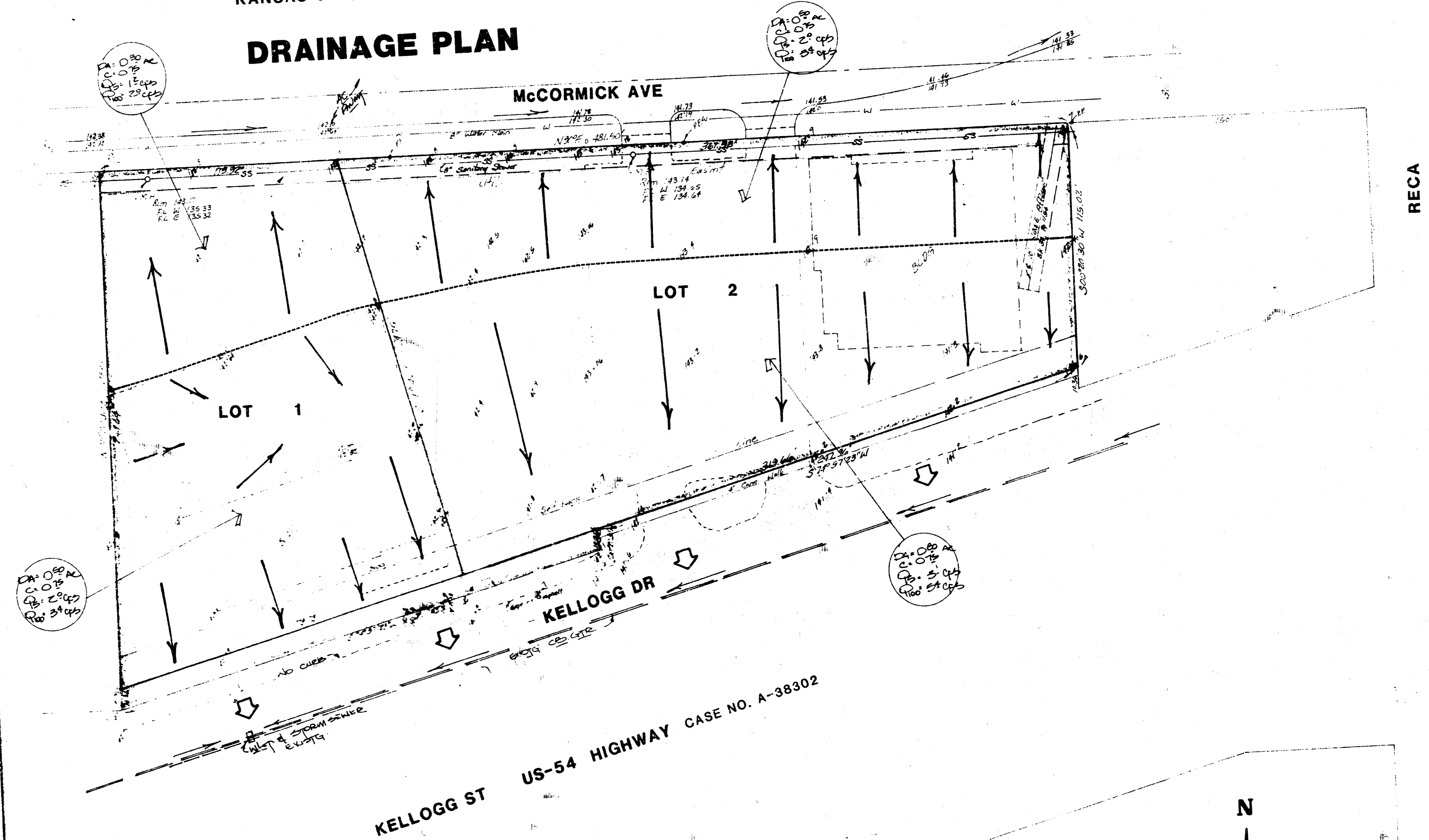
PART OF LOTS 16 AND 17 FAIRLAWN ACRES AND
LOT 1 KANSAS FEDERAL CREDIT UNION ADDITION

MIDAMERICAN CREDIT UNION
KANSAS CREDIT UNION LEAGUE

GARY ATKINS, PRES.
DENNIS HOFTS, PRES.

McCormick paving
ends at Recca. Kellogg
ends into Recca
electrical power

DRAINAGE PLAN



KELLOGG ST US-54 HIGHWAY CASE NO. A-38302

N

1" = 30'
ELECT. CITY PLAN

Drainage Notes

Lot 1 (0.80 acres) and Lot 2 (1.3 acres) are commercial lots with a runoff factor of 0.75 used for the sites. Presently parts of both lots are developed with buildings or parking lots as indicated. The lots drain both south to Kellogg Drive access road which drains west to inlets and storm sewer locations, and the lot also drains north to McCormick Ave. which drains east to the end of the pavement at Recca. From the end of the pavement at Recca, runoff discharges into a small borrow ponding lake. McCormick will be paved sometime in the future and all the local drainage will be discharged into a storm sewer at that time.

Runoff from these lots will continue to drain to the streets thru either drives or flumes as is necessary for the future. No drainage requirements will be required by this plat at this time.

BAUGHMAN COMPANY, P.A.
SURVEYING & ENGINEERING
312-262-7271 • 330 LAURA • WILMOTA, KANSAS 67111