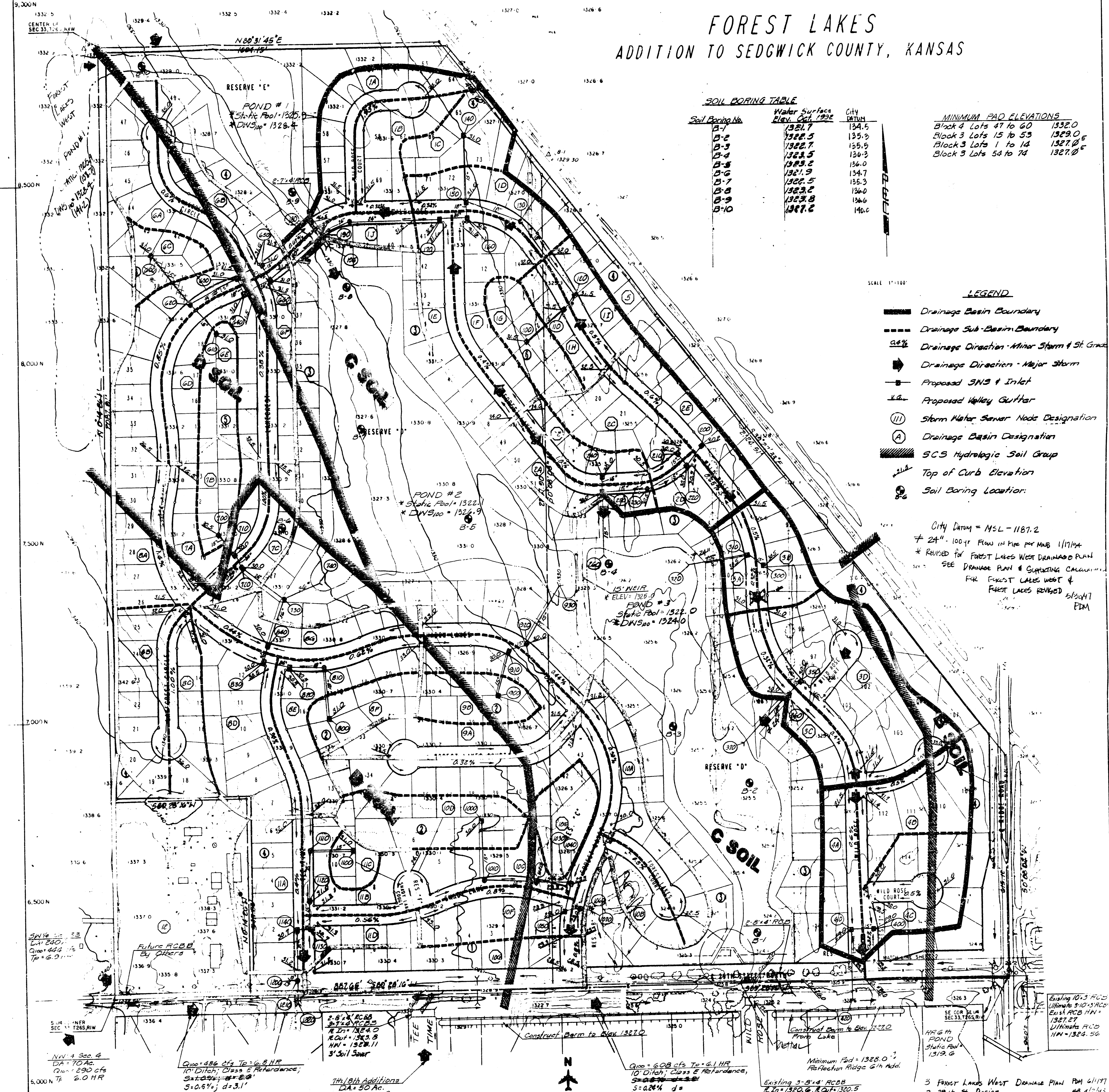


FOREST LAKES ADDITION TO SEDGWICK COUNTY, KANSAS



SOIL BORING TABLE

Soil Boring No.	Water Surface Elev. Oct. 1932	CITY DATUM
B-1	1321.7	134.5
B-2	1322.5	135.3
B-3	1322.7	135.5
B-4	1323.5	136.3
B-5	1323.5	136.0
B-6	1321.5	134.7
B-7	1322.5	135.5
B-8	1322.8	136.0
B-9	1322.8	136.6
B-10	1327.2	140.0

MINIMUM PAO ELEVATIONS

Block 4 Lots 47 to 60	1320.0
Block 3 Lots 15 to 53	1329.0
Block 3 Lots 1 to 14	1327.0
Block 3 Lots 54 to 74	1327.0

SCALE 1"=100'

LEGEND

- Drainage Basin Boundary
- Drainage Sub-Basin Boundary
- Drainage Direction - Minor Storm & St. Grad.
- Drainage Direction - Major Storm
- Proposed SWS & Inlet
- Proposed Valley Gutter
- Storm Water Sewer Node Designation
- Drainage Basin Designation
- SCS Hydrologic Soil Group
- Top of Curb Elevation
- Soil Boring Location

City Datum = MSL - 1187.2
 * 24" 100 ft Flow in Pipe per MMB 1/17/94
 * REVISED FOR FOREST LAKES WEST DRAINAGE PLAN
 SEE DRAINAGE PLAN & COMPUTING CALCULATIONS FOR FOREST LAKES WEST & FOREST LAKES REVISED 5/20/07 PDM

5/4" INER SEC 11 1265.11W
 NN 4 Sec 4 DA 710 AC Q100 424 cfs Tp = 6.0 HR

Q100 = 486 cfs To = 6.8 HR
 10" Ditch, Class E Performance, Sat. 0.2%; d = 3.1'

1/8" Bld Additions DA = 50 AC Q100 = 207 cfs Tp = 6.0 HR

Q100 = 608 cfs To = 6.1 HR
 10" Ditch, Class E Performance, Sat. 0.2%; d = 3.1'

Minimum Pao = 1325.0
 Perfection Ridge 6th Add.

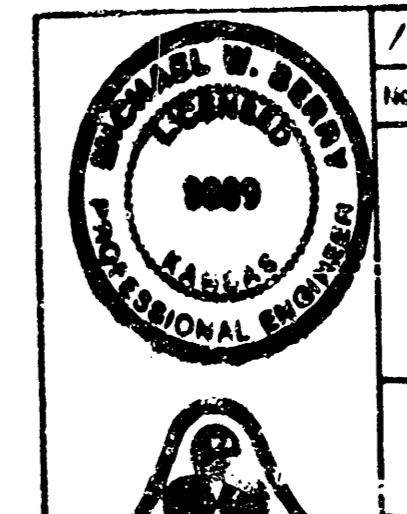
Existing 10" 5' PCD
 2.5" 1320.6, R.O.U. = 1320.5
 H.N. = 1326.92

3 Forest Lakes West Drainage Plan PM 4/1/97
 2 29th St. Design AB 4/2/95
 1 Supplemental Drainage Study 5/20/07

TOPOGRAPHIC MAP OF LANDS LOCATED IN
 SE QUARTER SECTION 11, T26S, R11E,
 SEDGWICK COUNTY, KANSAS

CLIPPING & LINDSEY PING
 PROFESSIONAL ENGINEERING CONSULTANTS, P.A.
 208 S. WILSON ST., WICHITA, KS 67202

0 100 200 300
 1" = 100'

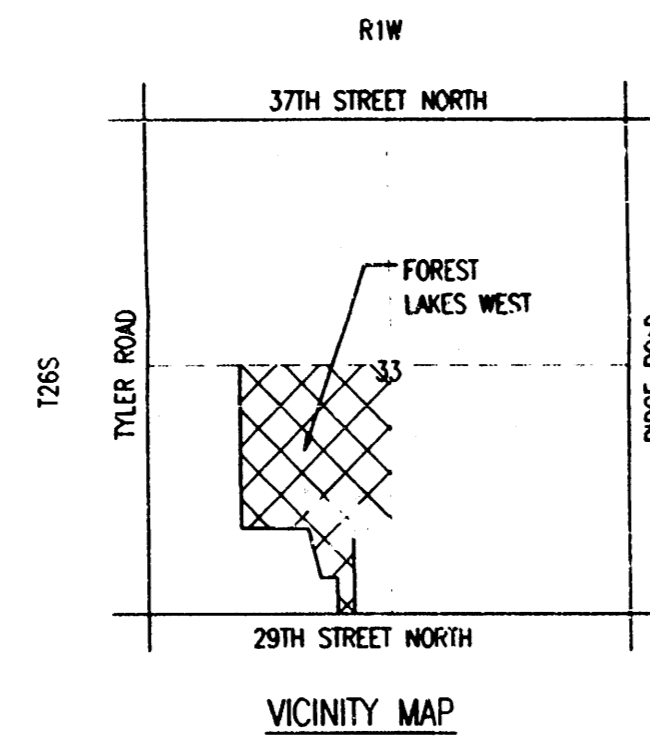


DRAINAGE PLAN FOREST LAKES

PROFESSIONAL ENGINEERING CONSULTANTS, P.A.
 WICHITA, KANSAS

FOUR CORNER LOT GRADING PLAN FOR
FOREST LAKES WEST
 AN ADDITION TO WICHITA, SEDGWICK COUNTY, KANSAS
 DEVELOPER: BOOTHE AND SCHELLENBERG

= IRON SET
 SCALE: 1"=100'
 2-14-97
 TOPOGRAPHY DATE: JANUARY, 1997
 B.M. - CHECKED "G" ON N.E. CORNER OF EAST HEADHILL
 OF RCB UNDER RIDGE ROAD AT 200' NORTH OF
 EAST 1/4 CORNER, SEC. 4, T27S, R1W
 ELEV. = 1328.45 CITY DATUM
 ELEV. = 1325.64 M.S.L.
 B.M. - RAILROAD SPIKE IN POWER POLE, NORTHWEST
 SUBSTATION ADDITION
 ELEV. = 1347.14 M.S.L.



CITY DATUM USED FOR ALL ELEVATIONS.
 MEAN SEA LEVEL = CITY DATUM + 1187.4
 THIS PLAN ASSUMES 3 5/8" ROLL CURB & GUTTER.
 WALK GRADE AT 0.5' ABOVE TOP OF CURB UNLESS NOTED.
 SEE STREET DESIGN PLANS FOR MORE DETAILED & UPDATED STREET GRADDES.
 SEE SANITARY SEWER PLANS FOR MORE DETAILED & UPDATED FLOWLINE DATA.

LEGEND

- S W — STORM SEWER AND INLET
- S M — STORM SEWER AND MANHOLE
- S P — PRIVATE STORM SEWER AND INLET (BY OWNER)
- S S — PROPOSED SANITARY SEWER
- S W — PROPOSED WATERLINES
- (V) VIEWOUT BASEMENT
- (W) WALKOUT BASEMENT
- (P) POSSIBLE VIEWOUT BASEMENT
- (PW) POSSIBLE WALKOUT BASEMENT
- (F) FULL FOUNDATION
- (A) 4 CORNER LOT ELEVATION (ADD 100 FOR CITY DATUM)
- H.P. HIGH POINT
- * MATCH EXISTING
- ℓ FLOW LINE (DITCH)
- TC TOP OF CURB

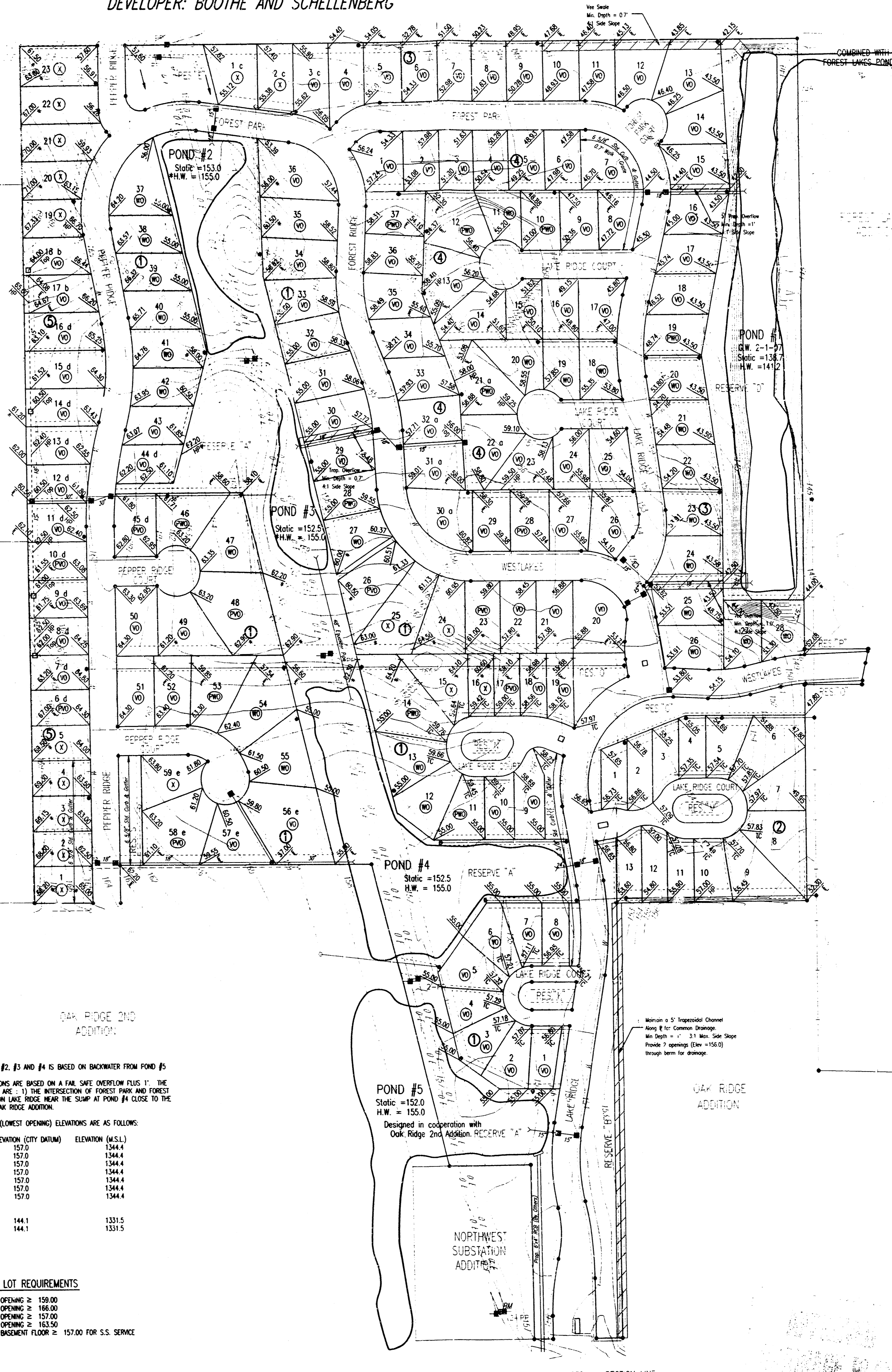
* HIGH WATER FOR PONDS #2, #3 AND #4 IS BASED ON BACKWATER FROM POND #5
 MOST JANUARY PWD ELEVATIONS ARE BASED ON A FIVE SAFE OVERFLOW PLUS 1' THE
 LOCATION OF THESE POINTS ARE: 1) THE INTERSECTION OF FOREST PARK AND FOREST
 RIDGE, 2) TOP OF CURB ON LAKE RIDGE NEAR THE SWMP AT POND #4 CLOSE TO THE
 NORTH WEST CORNER OF OAK RIDGE ADDITION.

ESTABLISHED MINIMUM PWD (LOWEST OPENING) ELEVATIONS ARE AS FOLLOWS:

BLOCK	LOTS	ELEVATION (CITY DATUM)	ELEVATION (M.S.L.)
BLOCK 1	LOTS 1 THROUGH 8	157.0	1344.4
	LOTS 25 THROUGH 36	157.0	1344.4
	LOTS 9 THROUGH 14	157.0	1344.4
	LOTS 54 THROUGH 56	157.0	1344.4
	LOT 47	157.0	1344.4
	LOTS 37 THROUGH 41	157.0	1344.4
	LOT 48	157.0	1344.4
BLOCK 3	LOTS 13 THROUGH 25	144.1	1331.5
	LOTS 27 AND 28	144.1	1331.5

ADDITIONAL LOT REQUIREMENTS

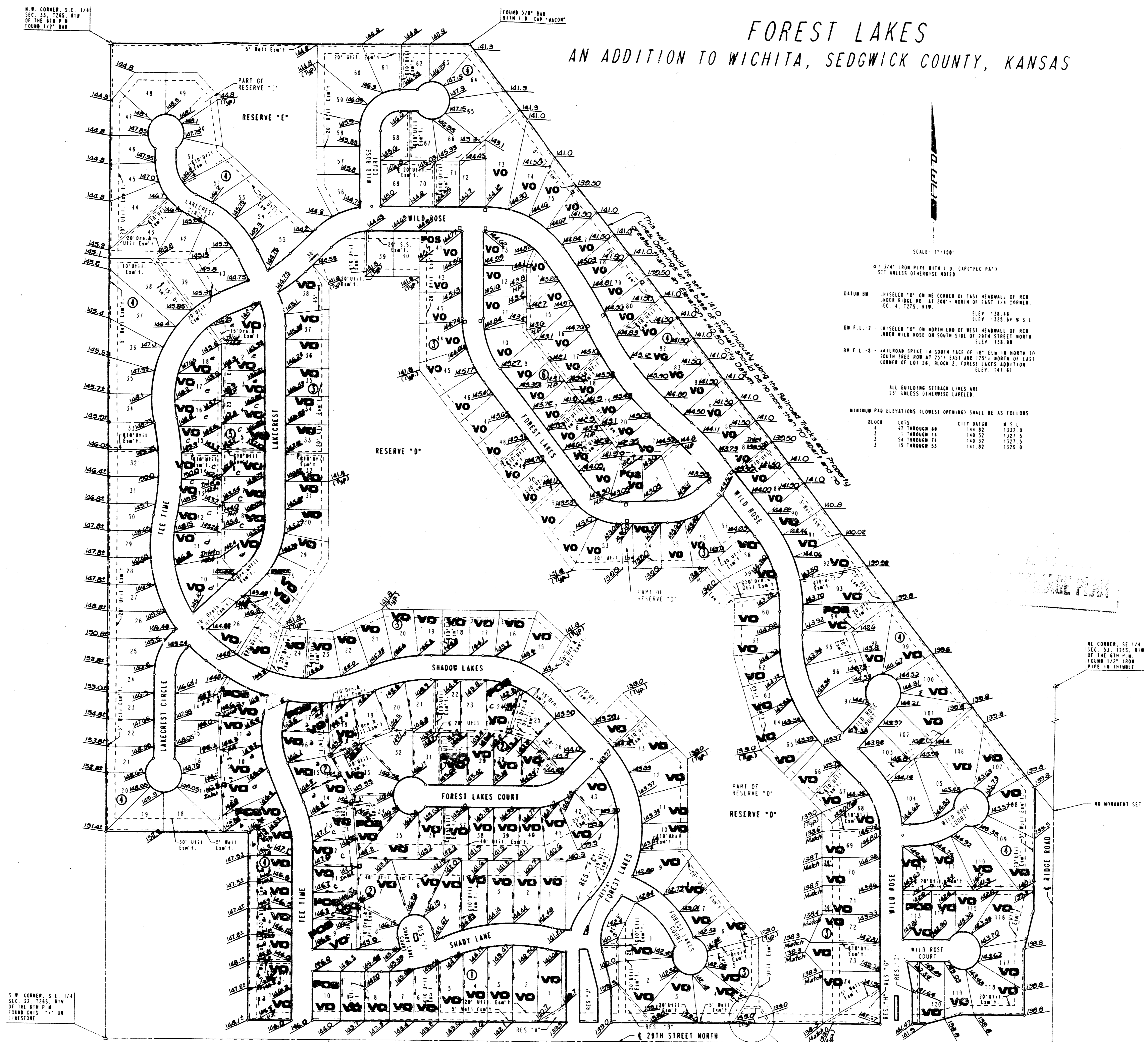
- o - MIN. OPENING ≥ 159.00
- b - MIN. OPENING ≥ 166.00
- e - MIN. OPENING ≥ 157.00
- d - MIN. OPENING ≥ 163.50
- e - MIN. BASEMENT FLOOR ≥ 157.00 FOR S.S. SERVICE



© 29TH STREET NORTH = SECTION LINE

FOREST LAKES

AN ADDITION TO WICHITA, SEDGWICK COUNTY, KANSAS



SCALE 1"=100'

0" 1/4" IRON PIPE WITH 1/2" CAP (REG. PA.)
S.I. UNLESS OTHERWISE NOTED

DATUM BM - CHISELED "D" ON NE CORNER OF EAST HEADWALL OF RCB UNDER RIDGE RD AT 200' NORTH OF EAST 1/4 CORNER, SEC. 33, T26S, R17W ELEV. 1326.46

BM F.L. 1 - CHISELED "D" ON NORTH END OF WEST HEADWALL OF RCB UNDER WILD ROSE ON SOUTH SIDE OF 20TH STREET NORTH ELEV. 1325.84 M.S.L.

BM F.L. 2 - RAILROAD SPIKE IN SOUTH FACE OF 18" ELM IN NORTH TO SOUTH TREE ROW AT 25' EAST AND 125' NORTH OF EAST CORNER OF LOT 28, BLOCK 2, FOREST LAKES ADDITION ELEV. 141.81

ALL BUILDING SETBACK LINES ARE 5' UNLESS OTHERWISE LABELED

MINIMUM PAD ELEVATIONS (CLOSEST OPENING) SHALL BE AS FOLLOWS:

BLOCK	LOTS	CITY DATUM	M.S.L.
4	1 THROUGH 68	144.82	1332.0
5	1 THROUGH 14	140.32	1327.5
3	15 THROUGH 74	140.32	1327.5
5	15 THROUGH 53	141.82	1328.0

S.W. CORNER, S.E. 1/4 SEC. 33, T26S, R17W OF THE 6TH 2" W FOUND THIS MARK ON LIMESTONE

N.E. CORNER, S.E. 1/4 SEC. 33, T26S, R17W OF THE 6TH 2" W FOUND 1/2" IRON PIPE IN THIMBLE

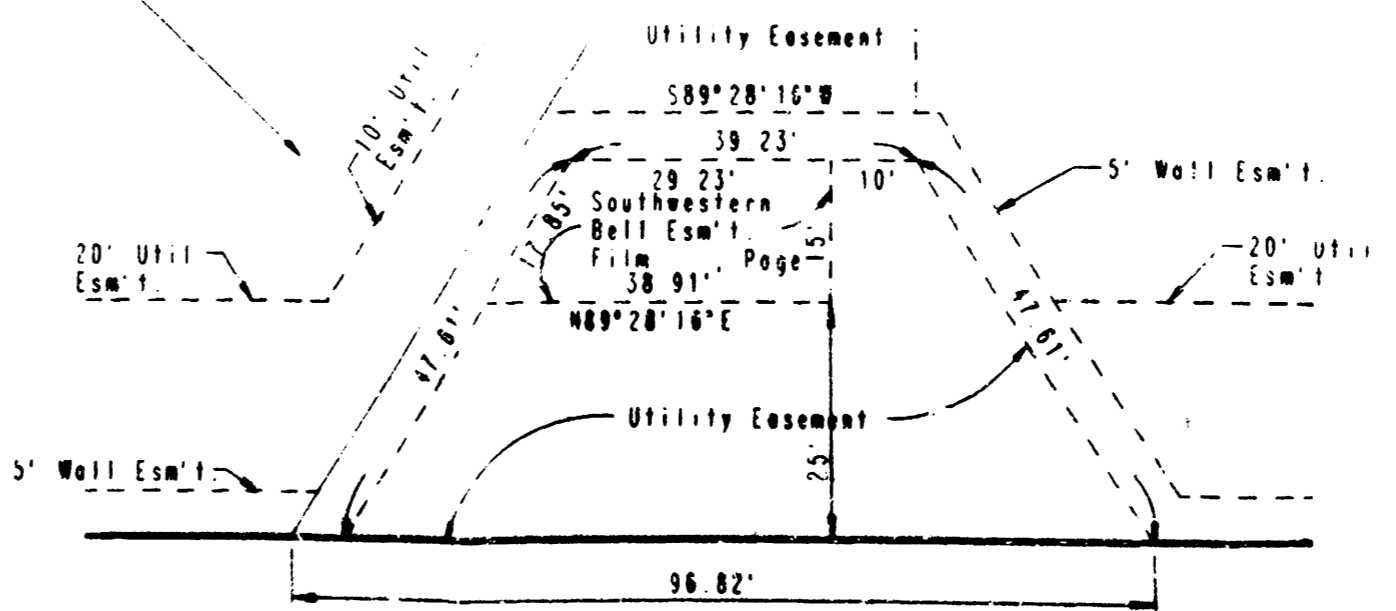
NO MINUMENT SET

VO - VIEWOUT
POB VO - POSSIBLE VIEWOUT

DETAILED DRAINAGE PLAN
PHASE 1, 7 & 8
PHASES 2&3
PHASE 4 REVISED

a = Low opening 146.5 or higher
b = Low opening 142.5 or higher
c = Low opening 148.0 or higher
d = Low opening 144.5 or higher
e = Low opening 139.5 or higher

SCALE 1"=100'



S.E. CORNER, S.E. 1/4 SEC. 33, T26S, R17W OF THE 6TH 2" W FOUND 5/8" IRON PIPE IN THIMBLE

Revised 8-7-97
Revised 8-15-98
Revised 9-11-99
Revised 1-23-99
Revised 5-30-99

DETAILED DRAINAGE PLAN