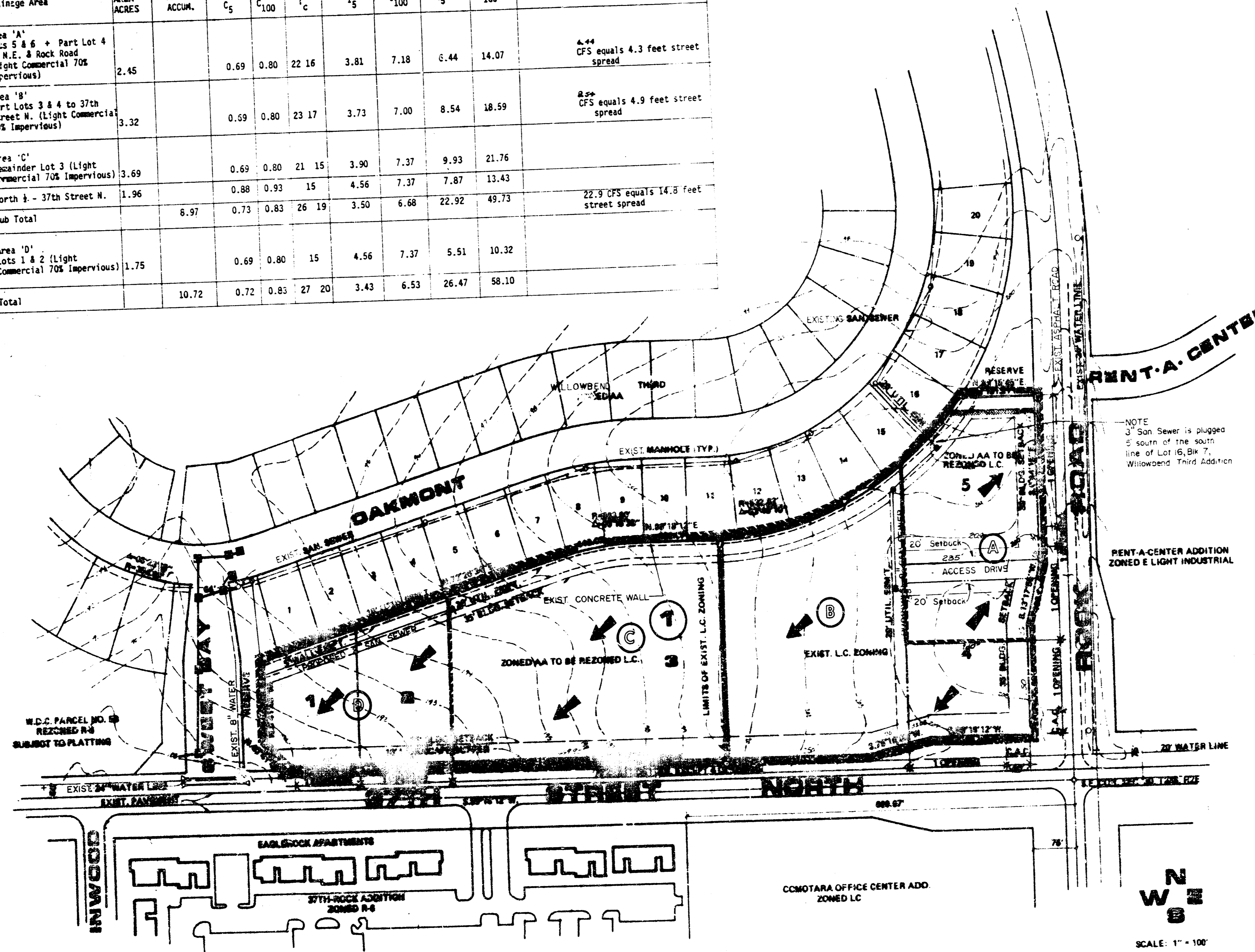


FRANK & JOHNNY'S ADDITION
(Drainage)

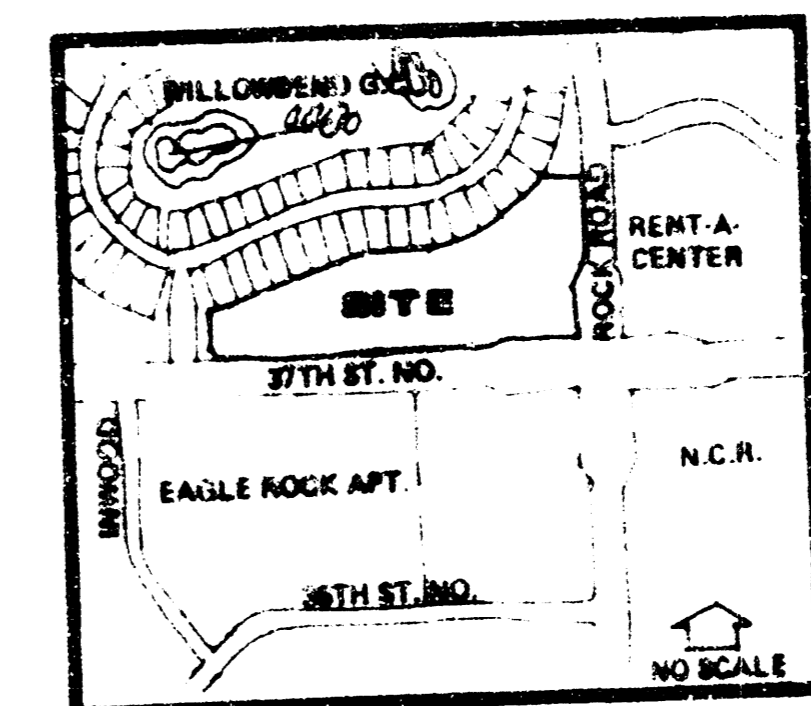
Drainage Area	AREA ACRES	AREA ACCUM.	C _s	C ₁₀₀	T _c	I _s	I ₁₀₀	Q _s	Q ₁₀₀	Comments
Area 'A' Lots 5 & 6 + Part Lot 4 to N.E. & Rock Road (Light Commercial 70% Impervious)	2.45		0.69	0.80	22.16	3.81	7.18	6.44	14.07	4.44 CFS equals 4.3 feet street spread
Area 'B' Part Lots 3 & 4 to 37th Street N. (Light Commercial 70% Impervious)	3.32		0.69	0.80	23.17	3.73	7.00	8.54	18.59	8.96 CFS equals 4.9 feet street spread
Area 'C' vacant Lot 3 (Light Commercial 70% Impervious)	3.69		0.69	0.80	21.15	3.90	7.37	9.93	21.76	
North 1/2 - 37th Street N.	1.96		0.88	0.93	15	4.56	7.37	7.87	13.43	
Sub Total	6.97		0.73	0.83	26.19	3.50	6.68	22.92	49.73	22.9 CFS equals 14.3 feet street spread
Area 'D' Lots 1 & 2 (Light Commercial 70% Impervious)	1.75		0.69	0.80	15	4.56	7.37	5.51	10.32	
Total	10.72		0.72	0.83	27.20	3.43	6.53	26.47	58.10	



NOTES:

BENCHMARK: CITY STD. 44' S. AND 48' W. OF CEN
37TH ST. NO AND ROCK ROAD. ELEV. 204.11'
SEE C.U.P. D.P. 156 FOR MASONRY WALL AND L.P.

NOTE
3" San Sewer is plugged
5' south of the south
line of Lot 16, Blk 7,
Willowbend Third Addition



LOCATION MAP

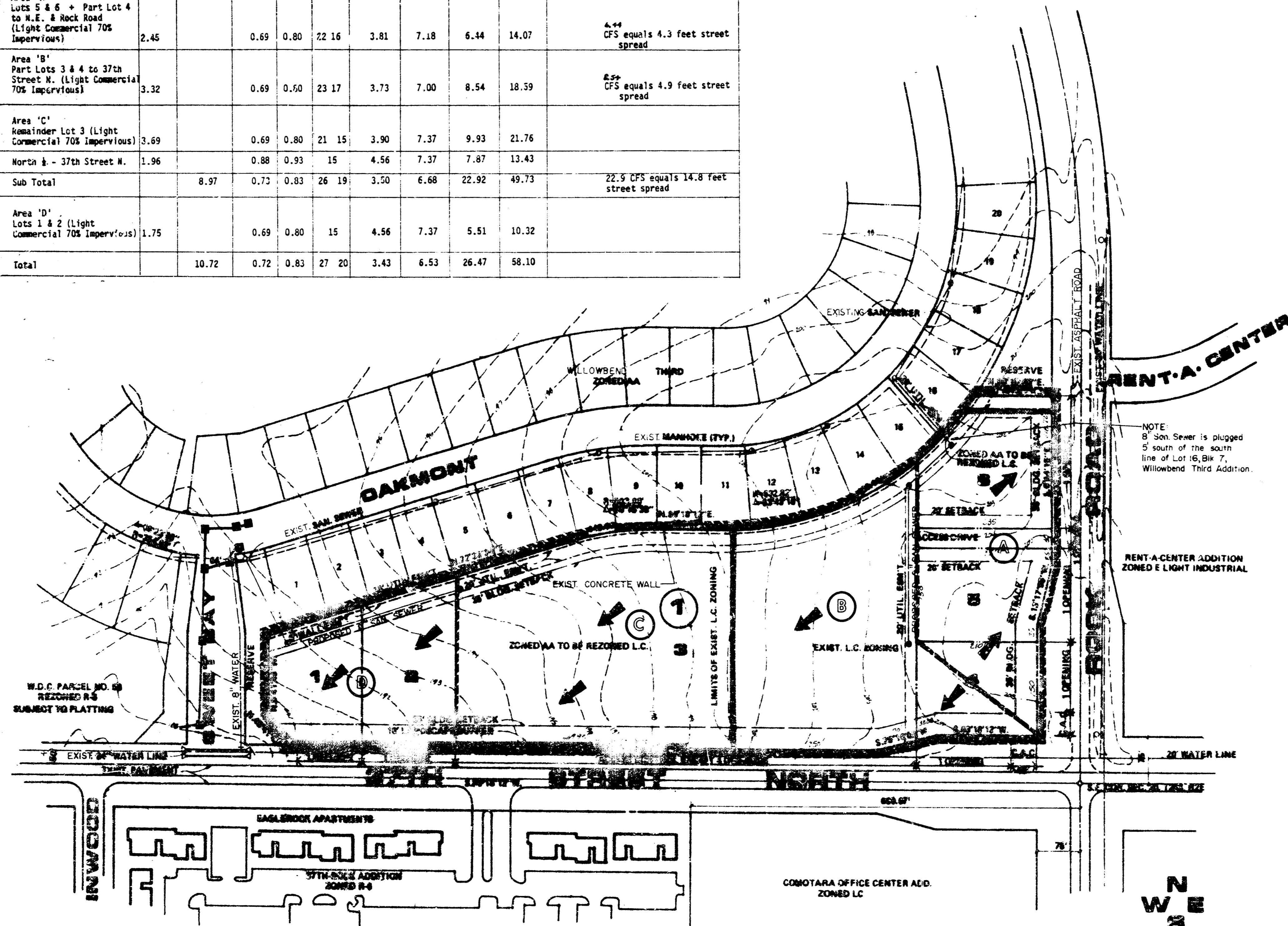
DRAINAGE AND UTILITY PLAN FOR

FRANK & JOHNNY'S ADD.

OWNER: WOODLAND DEVELOPMENT COMPANY, 181 NORTH WASH. SUITE 202, WICHITA, KS 67202

LILL G. YUNG DESIGN
 216 W. 10TH ST. NORTH, WICHITA, KS 67202
 sheet title
 PRELIMINARY PLAN
 project
 FRANK & JOHNNY'S ADDITION

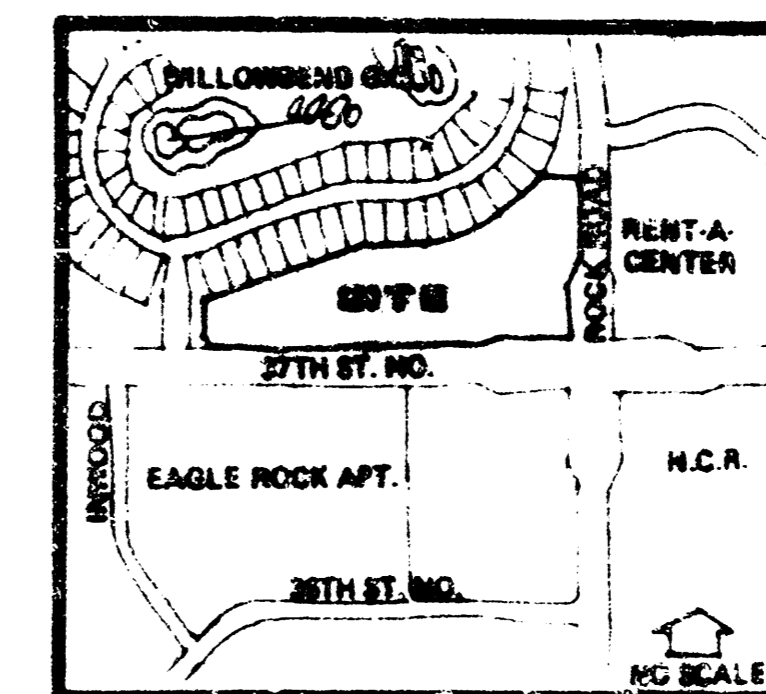
Drainage Area	AREA ACRES	AREA ACCUM.	C _s	C ₁₀₀	T _c	I _s	I ₁₀₀	Q _s	Q ₁₀₀	Comments
Area 'A' Lots 5 & 6 + Part Lot 4 to N.E. + Rock Road (Light Commercial 70S Impervious)	2.45		0.69	0.80	22.16	3.81	7.18	6.44	14.07	4.49 CFS equals 4.3 feet street spread
Area 'B' Part Lots 3 & 4 to 37th Street N. (Light Commercial 70S Impervious)	3.32		0.69	0.50	23.17	3.73	7.00	8.54	18.39	8.59 CFS equals 4.9 feet street spread
Area 'C' Remainder Lot 3 (Light Commercial 70S Impervious)	3.69		0.69	0.80	21.15	3.90	7.37	9.93	21.76	
North 1/2 - 37th Street N.	1.96		0.88	0.93	15	4.56	7.37	7.87	13.43	
Sub Total	8.97		0.73	0.83	26.19	3.50	6.68	22.92	49.73	22.9 CFS equals 14.8 feet street spread
Area 'D' Lots 1 & 2 (Light Commercial 70S Impervious)	1.75		0.69	0.80	15	4.56	7.37	5.51	10.32	
Total	10.72		0.72	0.83	27.20	3.43	6.53	26.47	58.10	



NOTES:

BENCH MARK: CITY STD. 44' S. AND 48' W. OF CENTER LINE OF
37TH ST. NO. AND ROCK ROAD. ELEV. 284.11
SEE C.U.P. D.P. 185 FOR MASONRY WALL AND LANDSCAPE BUFFER REQUIREMENTS.

NOTE:
B' San Sewer is plugged
5' south of the south
line of Lot 16, Blk. 7.
Willowbend Third Addition.



LOCATION MAP

DRAINAGE AND UTILITY PLAN FOR

FRANK & JOHNNY'S ADD.

FILED: W/00N AND NEW/000000/000000/000000/000000/000000/000000/000000/000000/000000/000000

Bill G. Yung Design
1811 E. 25TH STREET, NORTH, WICHITA, KS 67220

date: NOV. 14, 1988
rev: P-037

sheet title: PRELIMINARY PLAN
project: FRANK & JOHNNY'S ADDITION