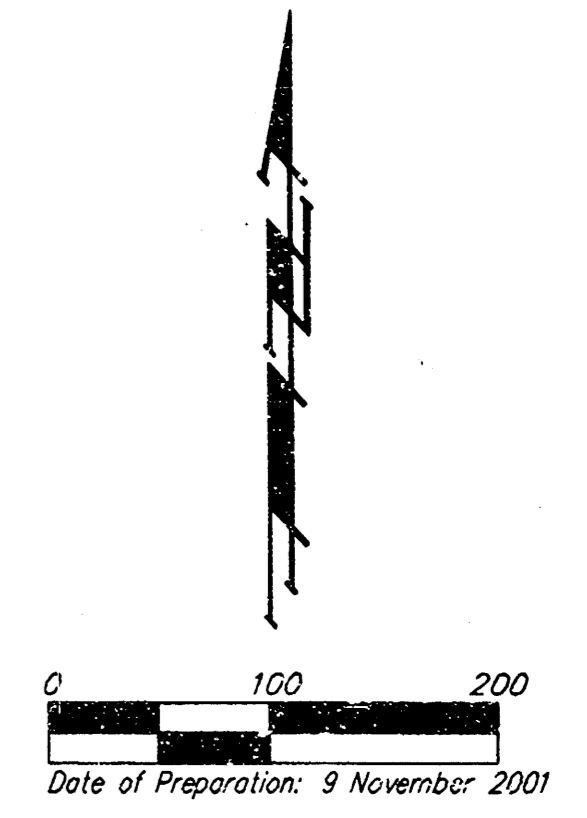


DRAINAGE PLAN GRAY'S 5TH ADDITION WICHITA, SEDGWICK COUNTY, KANSAS



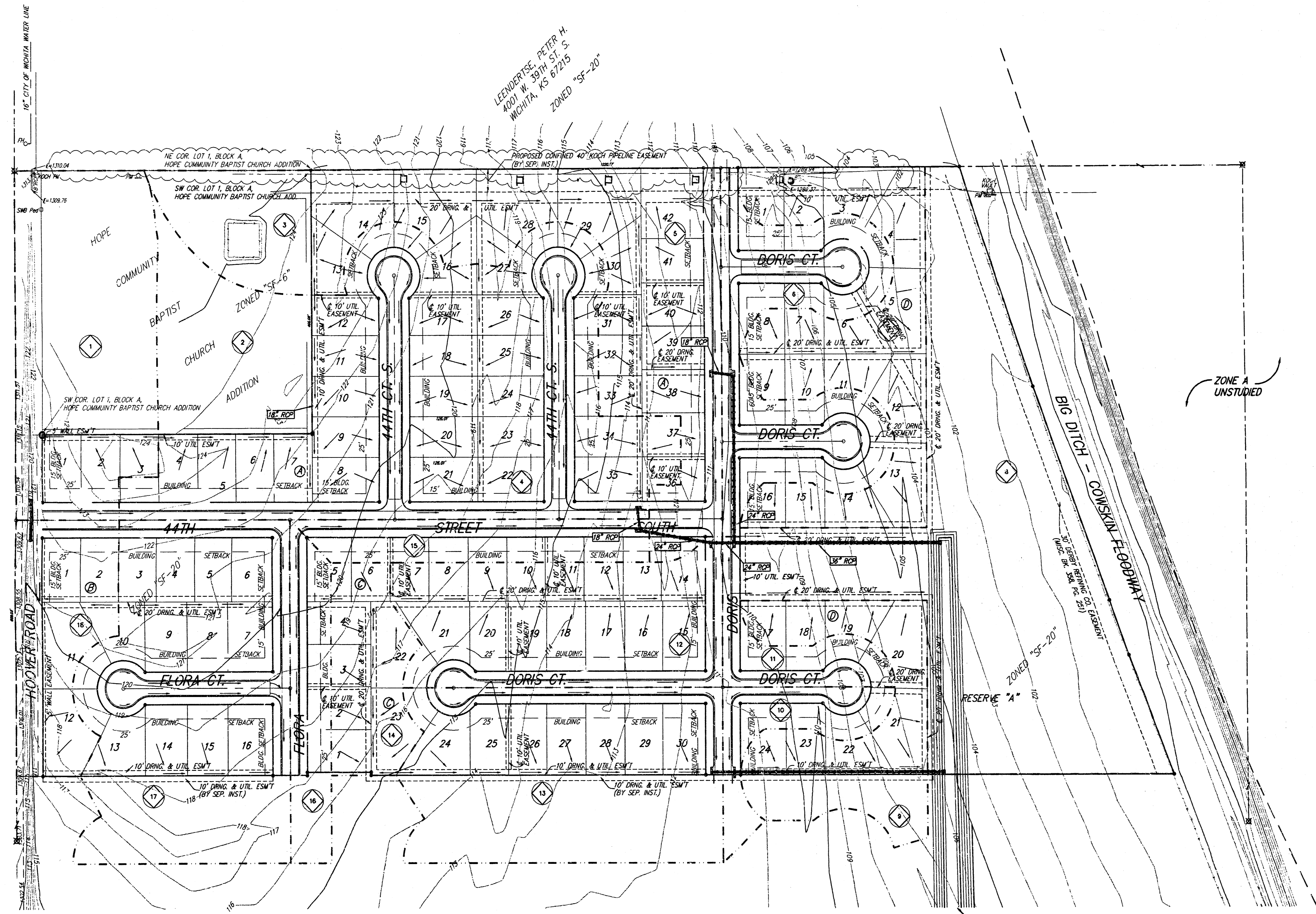
- = #4 Rebar w/ "Baughman" cap (Set)
- ⊗ = Section cor. (Found)
- = 1/2" iron (Found)
- ⊙ = #5 Rebar (Found)
- (M) = Measured
- (D) = Described
- (P) = Plotted
- (C) = Calculated

BENCHMARK:
City c/s 41.80' north and 69.00' east of centerline of Hoover and Wackerlin.
Elev = 1308.62 NGVD29 (121.22 City Datum)

NOTE:
A master grading plan for drainage has been developed for this subdivision and is on file with the City of Wichita, Kansas. All drainage easements, rights-of-ways, or reserves shall remain at established grades or as modified with the approval of the City Engineer of the City of Wichita, Kansas. No obstructions which impede the flow of this drainage system be allowed.

| Lot | Block | Elevation | |
|-------|-------|------------|--------|
| | | City Datum | NGVD29 |
| 4, 5 | D | 105.6 | 129.0 |
| 12-21 | D | 105.6 | 129.0 |

| Basin ID | Area acres | Runoff Coefficient | | | Peak Flowrate | | |
|----------|------------|--------------------|------|--------|---------------|------|--------|
| | | 2-yr | 5-yr | 100-yr | 2-yr | 5-yr | 100-yr |
| 1 | 3.7 | 0.42 | 0.44 | 0.59 | 6.0 | 7.4 | 16 |
| 2 | 1.9 | 0.42 | 0.44 | 0.59 | 3.1 | 3.8 | 8.3 |
| 3 | 1.2 | 0.42 | 0.44 | 0.59 | 1.9 | 1.4 | 5.2 |
| 4 | 7.6 | 0.42 | 0.44 | 0.59 | 13 | 16 | 34 |
| 5 | 4.6 | 0.42 | 0.44 | 0.59 | 7.4 | 9.2 | 20 |
| 6 | 2.7 | 0.42 | 0.44 | 0.59 | 4.3 | 5.4 | 12 |
| 7 | 3.0 | 0.42 | 0.44 | 0.59 | 4.5 | 6.0 | 13 |
| 8 | 7.5 | 0.42 | 0.44 | 0.59 | 12 | 15 | 33 |
| 9 | 2.1 | 0.42 | 0.44 | 0.59 | 3.4 | 4.2 | 9.1 |
| 10 | 0.8 | 0.42 | 0.44 | 0.59 | 1.3 | 1.6 | 3.5 |
| 11 | 0.7 | 0.42 | 0.44 | 0.59 | 1.1 | 1.4 | 3.0 |
| 12 | 3.2 | 0.42 | 0.44 | 0.59 | 5.1 | 6.4 | 14 |
| 13 | 4.2 | 0.42 | 0.44 | 0.59 | 6.5 | 8.4 | 18 |
| 14 | 1.2 | 0.42 | 0.44 | 0.59 | 1.9 | 2.4 | 5.2 |
| 15 | 1.1 | 0.42 | 0.44 | 0.59 | 1.8 | 2.2 | 4.8 |
| 16 | 1.0 | 0.42 | 0.44 | 0.59 | 1.6 | 2.0 | 4.3 |
| 17 | 5.1 | 0.42 | 0.44 | 0.59 | 8.2 | 10 | 22 |
| 18 | 1.7 | 0.42 | 0.44 | 0.59 | 2.7 | 3.4 | 7.4 |

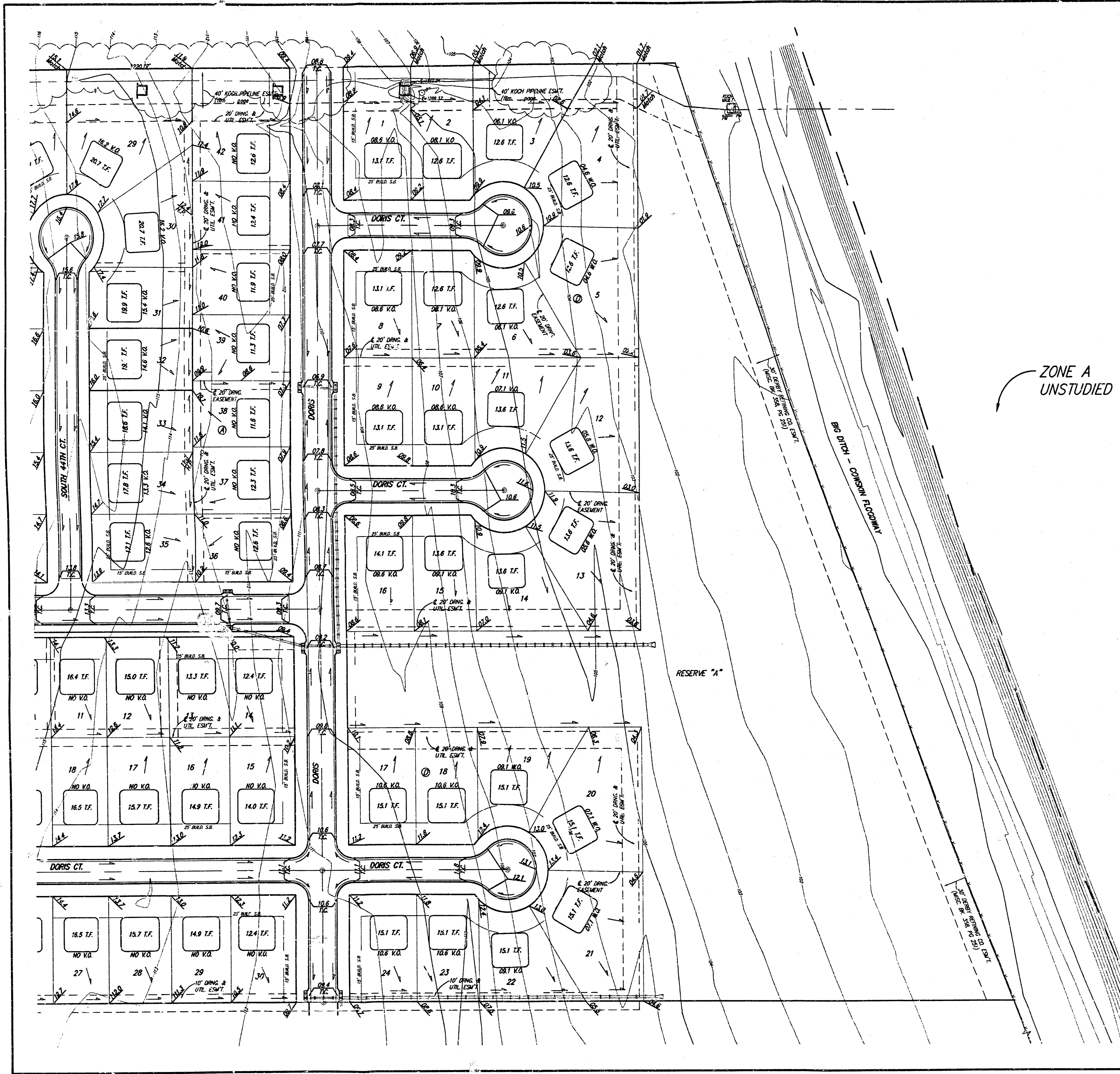


WALL, ALICE W. REVOCABLE TRUST
% PERCHIVAL J. KIRK, TRUSTEE
1531 N. RIDGEWOOD DR.
WICHITA, KS 67208
ZONED "SF-20"

LEENWERTSE, PETER H.
400 W. 39TH ST. S.
WICHITA, KS 67215
ZONED "SF-20"

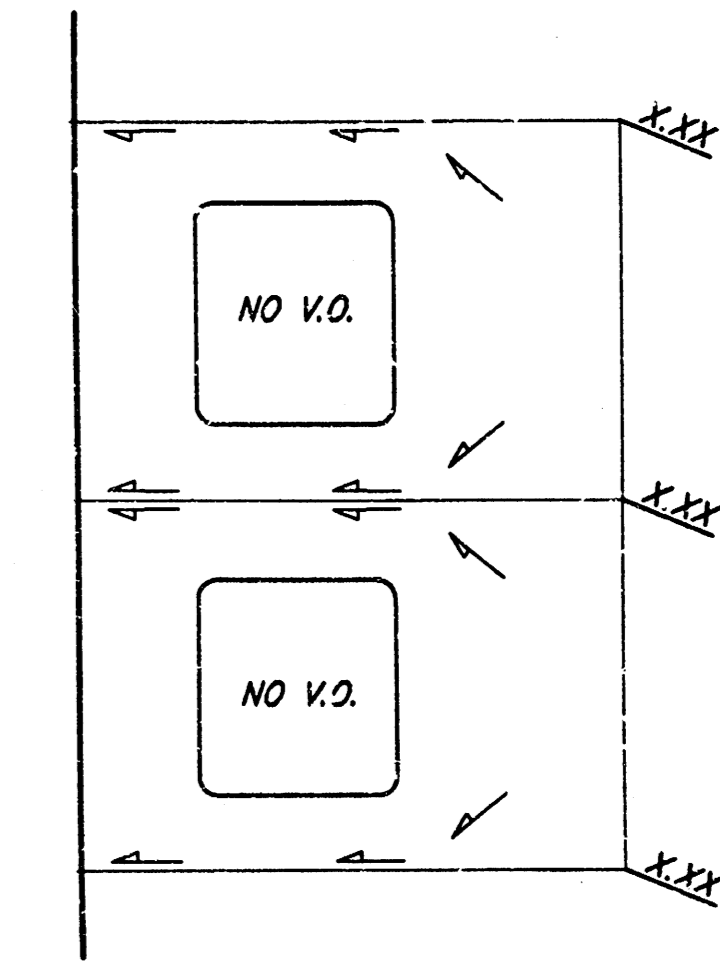
ZONE A
UNSTUDIED

Channel Section
to be constructed to
proposed crossing
at 47th St. South

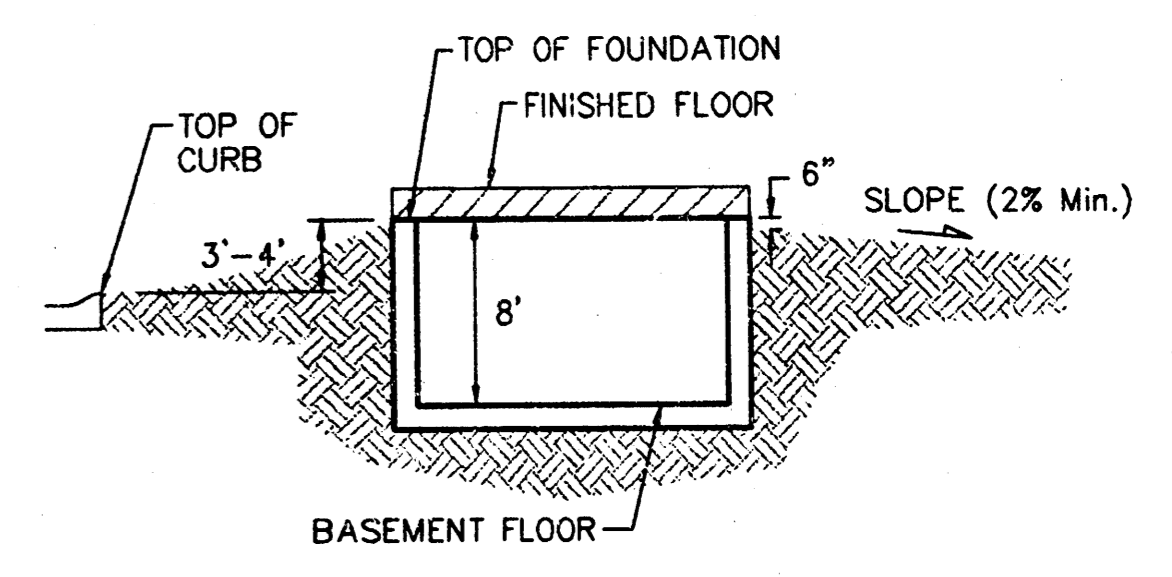


BENCHMARK:
 City Dis. - 41.60' North and 69.00' East of
 Intersection of Hoover and MacArthur.
 Elev. = 1308.62 NGVD29
 (= 121.22 City Datum)

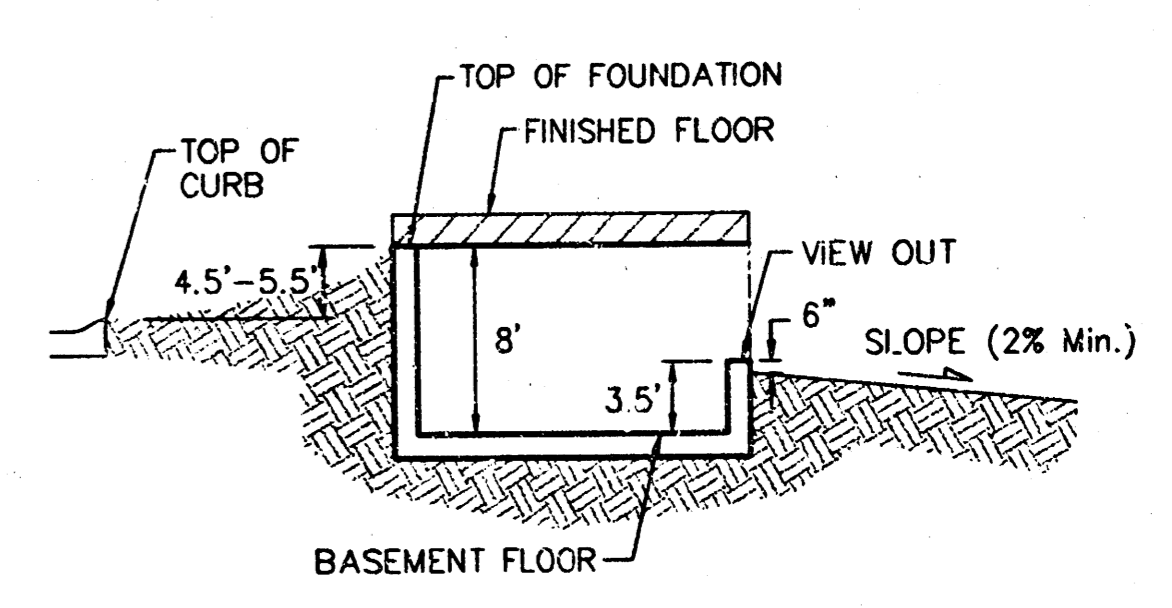
SCALE: 1" = 60'
 = Iron



TYPICAL LOT DRAINAGE FOR LOTS REQUIRING FLOW TO FRONT OF LOT
 NO SCALE



TYPICAL NON-VIEW OUT DETAIL
 NO SCALE



TYPICAL VIEW OUT DETAIL
 NO SCALE

**APPROVED
 DRAINAGE PLAN**

NOTES:
 Proposed Top of Foundation Elevations Are Shown On Plans. Contractor to Set Finished Floor Elevations.
 All Street Elevations Shown on Plans Are for Top of Curb (Full-Height).
 This Grading Plan is Designed with View-Outs. Elevations Shown at Rear of House (XX.X V.O.)
 Lot dimensions have been omitted on this plan, refer to the recorded plat for this information.

**GRAY'S 5TH ADDITION
 MASTER GRADING PLAN**

BAUGHMAN COMPANY P.A.
 ENGINEERING, SURVEYING, & PLANNING
 316-262-7271 • 315 ELLIS • WICHITA, KANSAS 67211

PROJECT NUMBER

| | | | | | |
|--------|-------|----------|-----------|-------|-------|
| DESIGN | DRAWN | APPROVED | DATE | SCALE | SHEET |
| NEW | BLG | | 15NOV2001 | NOTED | 22 |

OF 22 SHEETS