

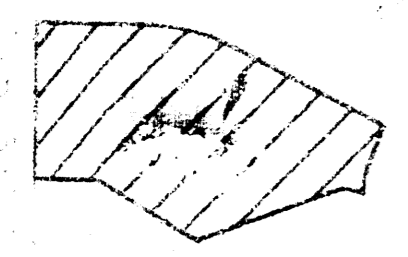
WATER LEVEL
127.6

WATER LEVEL
127.6

P. 7.10

**APPROVED
DRAINAGE PLAN**

Kenneth Hill
7/22/99



VICINITY MAP

NOTES:

- 1. The drainage system is designed to collect and convey runoff from the site to the street drainage system.
- 2. The drainage system is designed to collect and convey runoff from the site to the street drainage system.

LEGEND:

- 1. Stormwater collection system
- 2. Stormwater conveyance system
- 3. Street drainage system

BENCHMARKS:

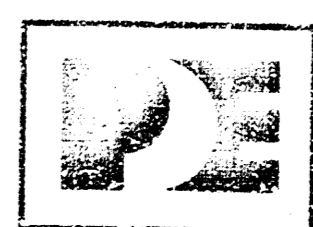
- 1. Benchmark 1
- 2. Benchmark 2

LOT SHADING PLAN - REVISED

HARBOR ISLE END ADDITION

TO WICHITA - SEDGWICK COUNTY, KANSAS

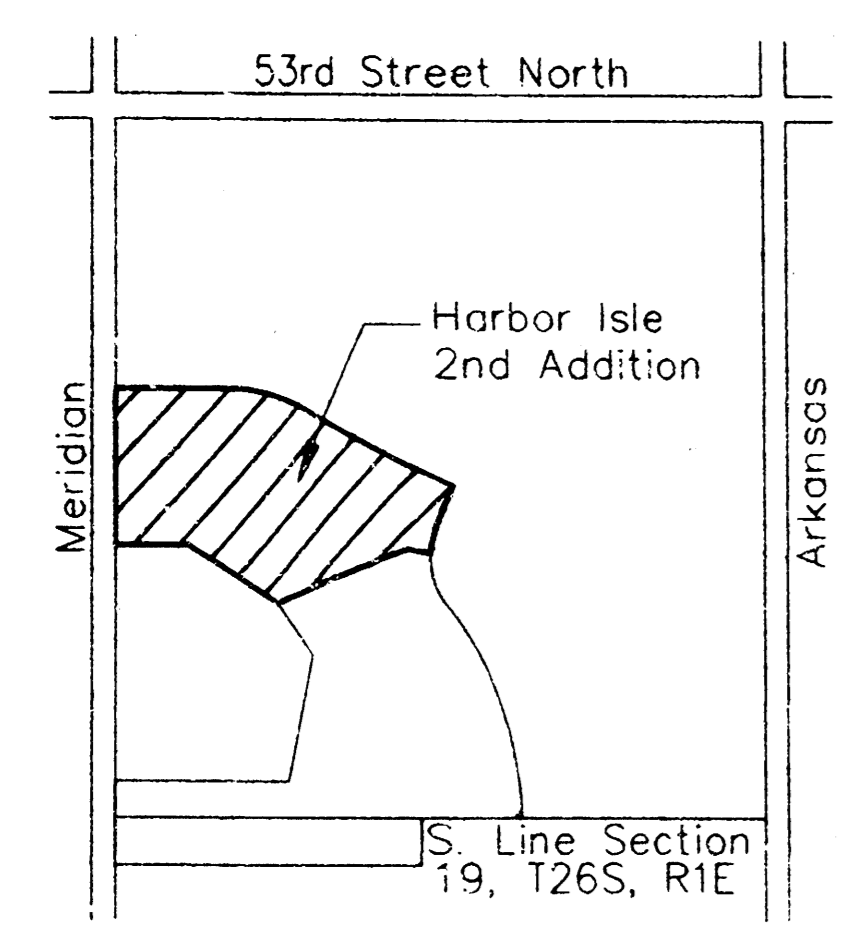
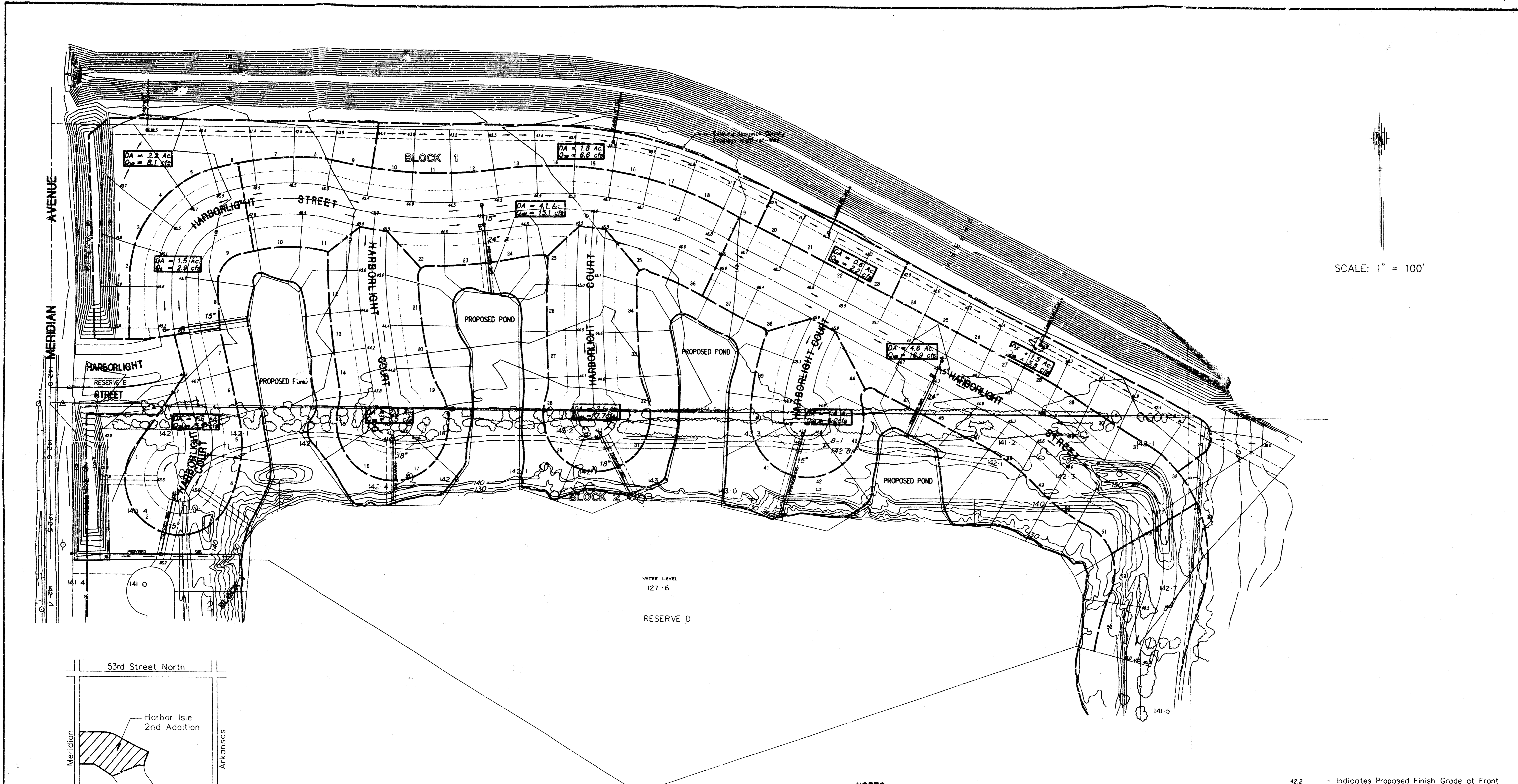
DATE: FEB. 1, 1998 REVISED 7/22/99



POE & ASSOCIATES OF KANSAS, INC.

HARBOR ISLE 2ND 7-28-99
Revised

\\poe\doc\199688-1\kump\1.dwg Tue Dec 23 09:46:21 1997 James Lebert - POE & ASSOCIATES OF KANSAS, INC.



WATER LEVEL
127.6
RESERVE D

NOTES:

1. The minimum low opening for homes built in this addition shall be 134.0 (City of Wichita Datum) or 1321.4 (MSL Datum)
2. The minimum basement floor elevation for homes built in this addition shall be 131.0 (City of Wichita Datum) or 1318.4 (MSL Datum)

- 42.2 - Indicates Proposed Finish Grade at Front Lot Corner. Subtract 0.5 feet for Top of Curb Grade.
- Indicates Drainage Path

BENCHMARK

1. "□" cut on southwest corner of north headwall at Meridian Avenue and Milro. Elev. 139.85 (City of Wichita Datum)

DRAINAGE PLAN

HARBOR ISLE 2ND ADDITION

TO WICHITA - SEDGWICK COUNTY, KANSAS

DATE: DECEMBER 22, 1997

POE & ASSOCIATES OF KANSAS, INC.
CONSULTING ENGINEERS
5940 E. Central Suite 200 ■ Wichita KS 67208 ■ 316/685-4114