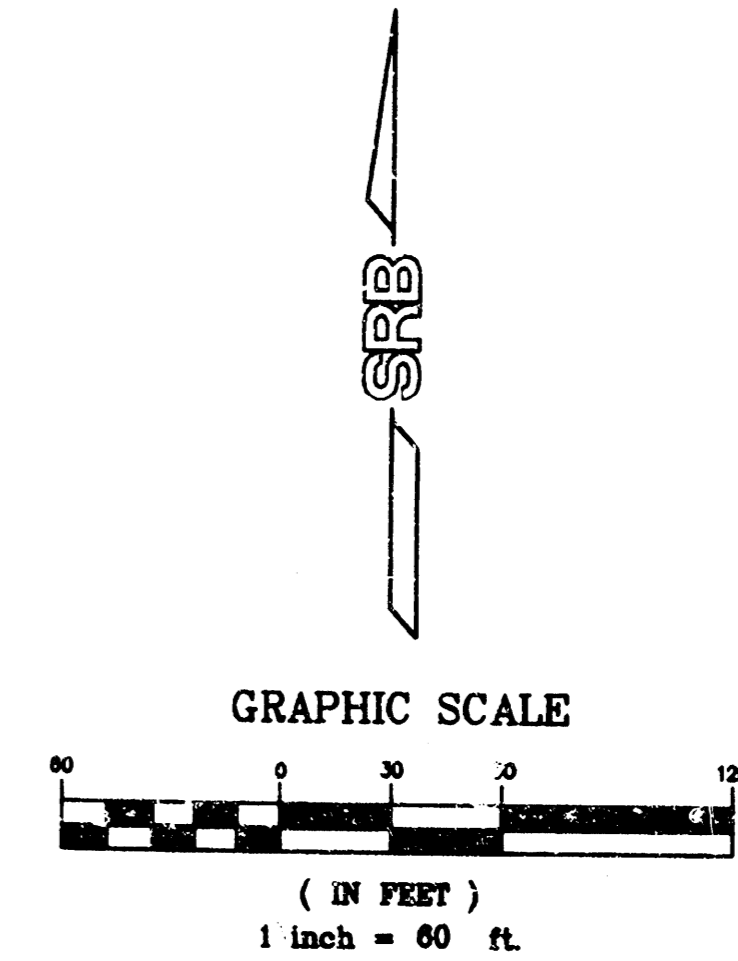
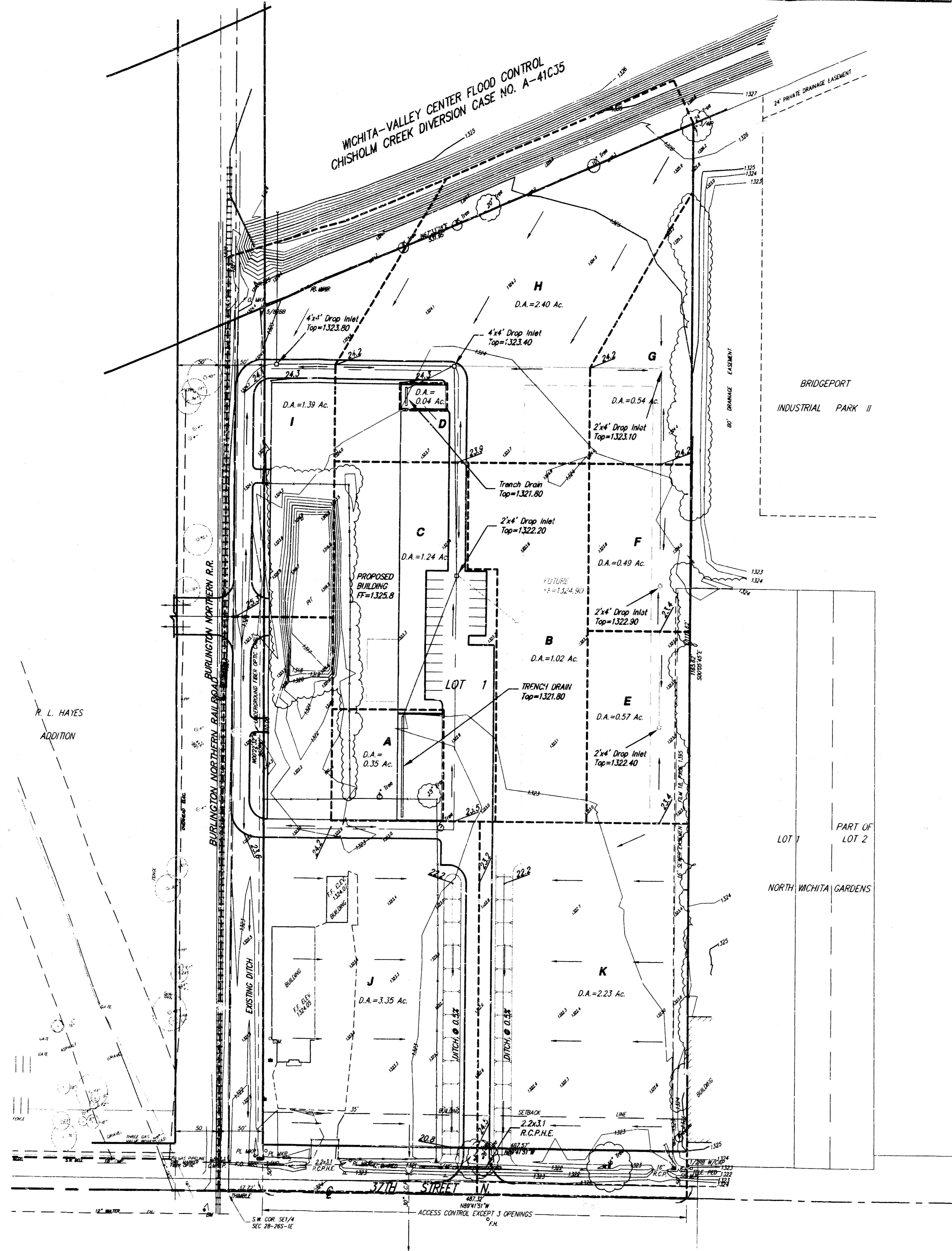


DRAINAGE PLAN

R. L. HAYES 2ND ADDITION

WICHITA, SEDGWICK COUNTY, KANSAS



BENCH MARK:
 City of Wichita Bench Mark. Conc. base for
 Railroad Signal, south side 37th St. N.
 19.6' south of ctr line 37th St. and 13.6'
 west of west rail of R.R.
 Elev.=1324.16 (NGVD)

NOTE:
 Costal Refining Pipelines are abandoned.
 Costal Pipeline Easement released on
 Film 1767 at page 530.

DRAINAGE DATA											
Area	Cum. Area	Tc	Soil Type "D"	CS	C100	IS	I100	QS	Q100	Pipe Size and Slope	Inlets
A	0.35	0.33	15	0.69	0.80	4.56	7.37	1.1	2.1	15" at 0.38%"	Trench
B	1.02	1.02	15	0.69	0.80	4.56	7.37	3.2	6.0	18" at 0.30%"	2'x4' D.I.
C	1.24	1.24	15	0.69	0.80	4.56	7.37	3.9	7.3	24" at 0.20%"	2'x4' D.I.
D	0.04	0.04	15	0.69	0.80	4.56	7.37	0.1	0.2	8" at 0.38%"	Trench
E	0.57	0.57	15	0.69	0.80	4.56	7.37	1.8	3.4	15" at 0.38%"	2'x4' D.I.
F	0.49	0.49	15	0.69	0.80	4.56	7.37	1.5	2.9	18" at 0.30%"	2'x4' D.I.
G	0.54	0.54	15	0.69	0.80	4.56	7.37	5.0	9.4	24" at 0.20%"	4'x4' D.I.
H	2.44	2.44	15	0.69	0.80	4.56	7.37	7.7	14.4	30" at 0.15%"	4'x4' D.I.
I	1.39	1.39	15	0.69	0.80	4.56	7.37	4.4	8.2	36" at 0.12%"	V-Ditch
J	3.35	3.35	15	0.69	0.80	4.56	7.37	10.5	19.8	V-Ditch	V-Ditch
K	2.23	2.23	15	0.69	0.80	4.56	7.37	7.0	13.1	V-Ditch	V-Ditch

Note: Basins J & K drain into V-ditches located on either side of the entrance from 37th St. N. to the 37th St. N. R.O.W.

TWO FILE: 01/01/95-B5
 PROJECT NO. 920100P

SRB 924 NORTH MAIN WICHITA, KANSAS 67203
 318-284-8008 FAX 284-4821
 http://www.srb.com/~srb E-mail: srb@talnet.com

SAVOY, RUGGLES & BOHM, P. A.
 ENGINEERING & SURVEYING

May 6, 1998