

DRAINAGE PLAN HIGHLAND SPRINGS 2ND ADDITION WICHITA, SEDGWICK COUNTY, KANSAS

JOE M. JACOBS TRUST
647 N. 135TH STREET WEST
WICHITA, KANSAS 67235

JOE M. JACOBS TRUST
647 N. 135TH STREET WEST
WICHITA, KANSAS 67235



016 - Site Flow
0.1A = 69 cc
0.1B = 32 cc
0.1C = 110 cc
0.1D = 180 cc

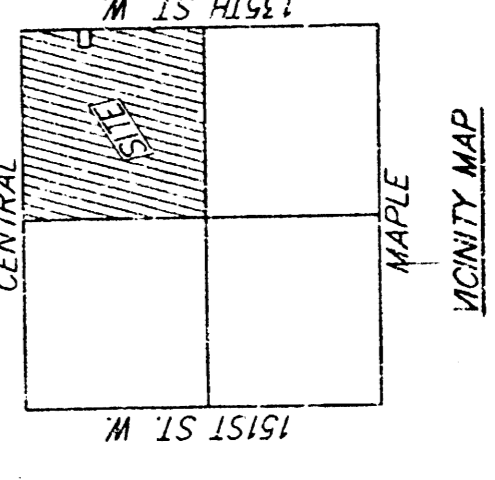
LAWRENCE EDWARD ALBERT TRUST
LAWRENCE EDWARD ALBERT TRUST

LAWRENCE EDWARD ALBERT TRUST
LAWRENCE EDWARD ALBERT TRUST

Drainage Area	Area	Flow	Basin	Basin	Basin	Basin	Basin	Basin	Basin
1	1.1	1.1	1.1	1.1	1.1	1.1	1.1	1.1	1.1
2	1.2	1.2	1.2	1.2	1.2	1.2	1.2	1.2	1.2
3	1.3	1.3	1.3	1.3	1.3	1.3	1.3	1.3	1.3
4	1.4	1.4	1.4	1.4	1.4	1.4	1.4	1.4	1.4
5	1.5	1.5	1.5	1.5	1.5	1.5	1.5	1.5	1.5
6	1.6	1.6	1.6	1.6	1.6	1.6	1.6	1.6	1.6
7	1.7	1.7	1.7	1.7	1.7	1.7	1.7	1.7	1.7
8	1.8	1.8	1.8	1.8	1.8	1.8	1.8	1.8	1.8
9	1.9	1.9	1.9	1.9	1.9	1.9	1.9	1.9	1.9
10	2.0	2.0	2.0	2.0	2.0	2.0	2.0	2.0	2.0

Drainage Area	Area	Flow	Basin	Basin	Basin	Basin	Basin	Basin	Basin
11	2.1	2.1	2.1	2.1	2.1	2.1	2.1	2.1	2.1
12	2.2	2.2	2.2	2.2	2.2	2.2	2.2	2.2	2.2
13	2.3	2.3	2.3	2.3	2.3	2.3	2.3	2.3	2.3
14	2.4	2.4	2.4	2.4	2.4	2.4	2.4	2.4	2.4
15	2.5	2.5	2.5	2.5	2.5	2.5	2.5	2.5	2.5
16	2.6	2.6	2.6	2.6	2.6	2.6	2.6	2.6	2.6
17	2.7	2.7	2.7	2.7	2.7	2.7	2.7	2.7	2.7
18	2.8	2.8	2.8	2.8	2.8	2.8	2.8	2.8	2.8
19	2.9	2.9	2.9	2.9	2.9	2.9	2.9	2.9	2.9
20	3.0	3.0	3.0	3.0	3.0	3.0	3.0	3.0	3.0

Drainage Area	Area	Flow	Basin	Basin	Basin	Basin	Basin	Basin	Basin
21	3.1	3.1	3.1	3.1	3.1	3.1	3.1	3.1	3.1
22	3.2	3.2	3.2	3.2	3.2	3.2	3.2	3.2	3.2
23	3.3	3.3	3.3	3.3	3.3	3.3	3.3	3.3	3.3
24	3.4	3.4	3.4	3.4	3.4	3.4	3.4	3.4	3.4
25	3.5	3.5	3.5	3.5	3.5	3.5	3.5	3.5	3.5
26	3.6	3.6	3.6	3.6	3.6	3.6	3.6	3.6	3.6
27	3.7	3.7	3.7	3.7	3.7	3.7	3.7	3.7	3.7
28	3.8	3.8	3.8	3.8	3.8	3.8	3.8	3.8	3.8
29	3.9	3.9	3.9	3.9	3.9	3.9	3.9	3.9	3.9
30	4.0	4.0	4.0	4.0	4.0	4.0	4.0	4.0	4.0



THE BAUGHMAN COMPANY P.A.
ENGINEERS, ARCHITECTS, PLANNERS