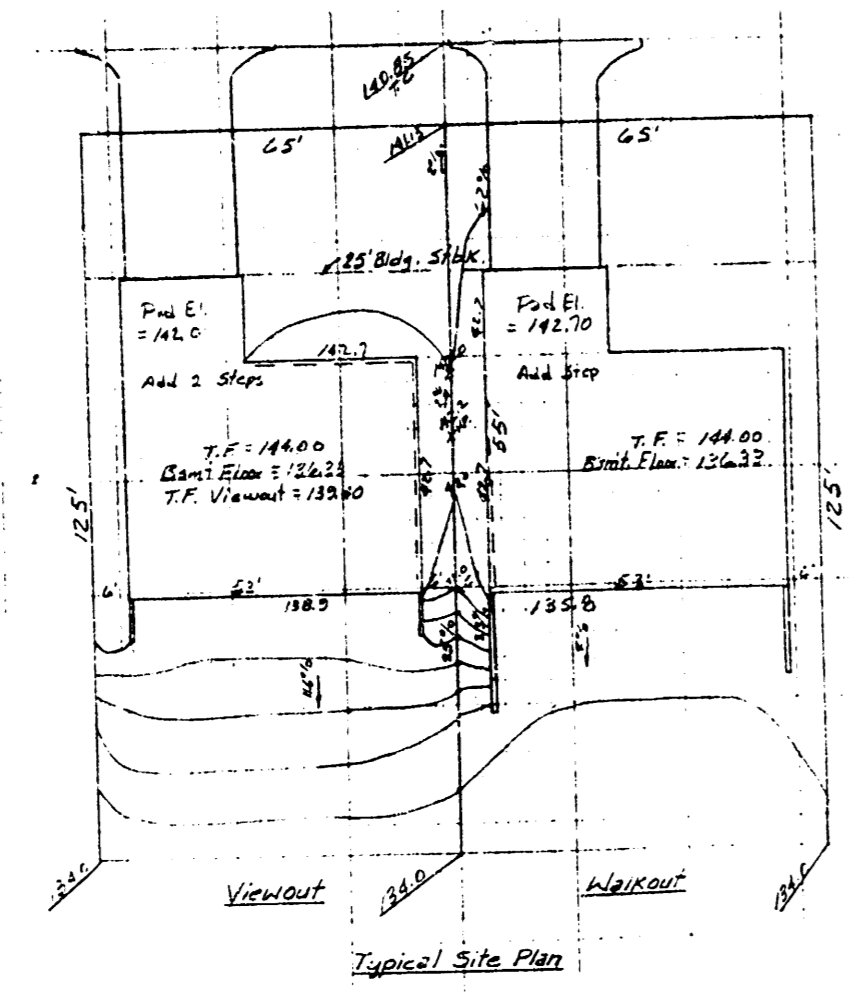
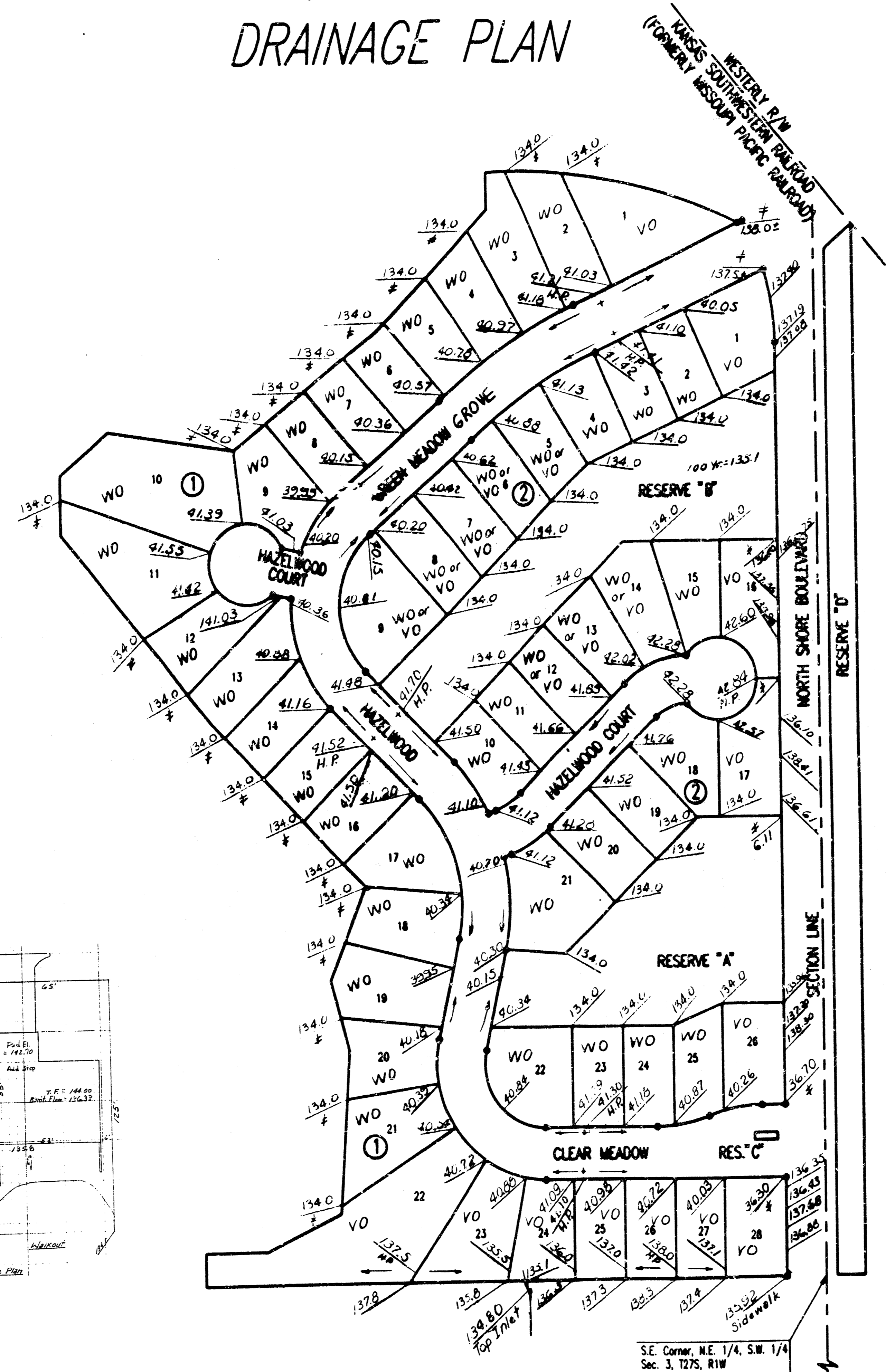
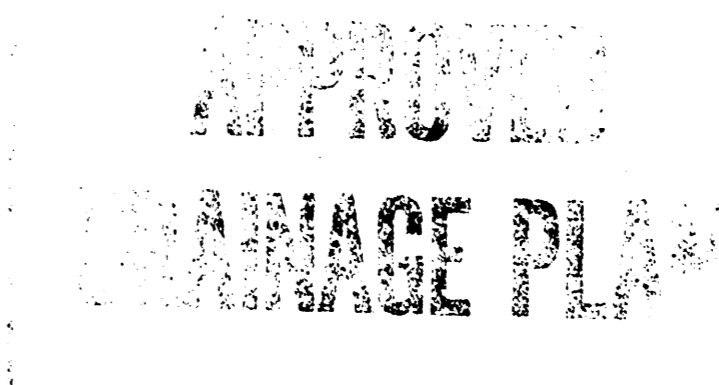


HORSESHOE BAY ADDITION TO WICHITA, SEDGWICK COUNTY, KANSAS DRAINAGE PLAN



SCALE: 1"=100'
 ● = IRON SET
 C.A.C. = COMPLETE ACCESS CONTROL
 B.S.L. = BUILDING SETBACK LINE
 BENCH MARK: CITY OF WICHITA BENCH MARK DISC, 30 FEET NORTH AND 37 FEET EAST OF THE INTERSECTION OF THE CENTERLINES OF MOORE AND 21ST ST., W.
 ELEV. = 1329.991 CITY DATUM
 LLFV = 1327.17 M.S.L.
 Elevations shown are walk grade.
 H.P. - High Point
 * - Match

NOTE: ELEVATIONS BASED ON C.O.W. DATUM
 M.S.L. DATUM = C.O.W. DATUM + 1187.18
 COMPUTATIONS BASED ON ROLLED CURB & GUTTER & MINIMUM WALK GRADE OF 0.3 FEET ABOVE TOP OF CURB



MINIMUM PAD (LOWEST OPENING) ELEVATION FOR THE FOLLOWING LOTS SHALL BE AS SHOWN BELOW:

LOTS	BLOCK	CITY DATUM	USE	M.S.L.
1 THROUGH 28	1	1329.991	1820	1322.810
1 THROUGH 28	2	1329.991	1820	1322.810

MINIMUM LOWEST FLOOR ELEVATION FOR THE FOLLOWING LOTS SHALL BE AS SHOWN BELOW:

LOTS	BLOCK	CITY DATUM	USE	M.S.L.
1 THROUGH 28	1	1329.991	1820	1322.810
1 THROUGH 28	2	1329.991	1820	1322.810

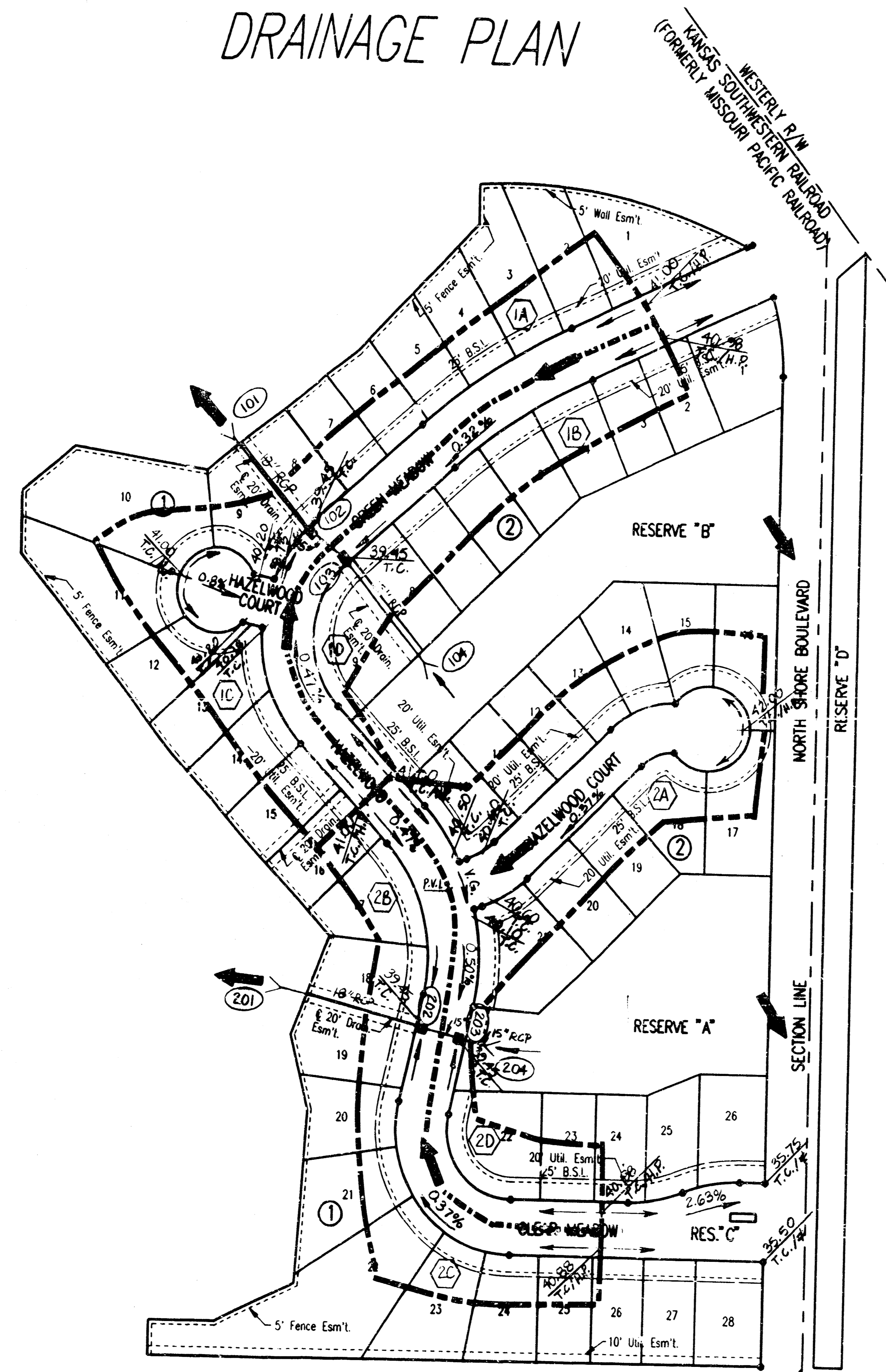
LOTS 5 THROUGH 9 & 12 THROUGH 14, BLOCK 2 CAN BE WALKOUTS IF TREES ARE NOT TO BE SAVED.

HORSESHOE BAY ADD'N
 REC'D
 11 JUNE 1999

S.E. Corner, N.E. 1/4, S.W. 1/4
 Sec. 3, T27S, R1W
 of the 6th P.M.

S.E. Corner, S.W. 1/4
 Sec. 3, T27S, R1W
 of the 6th P.M.

HORSESHOE BAY ADDITION TO WICHITA, SEDGWICK COUNTY, KANSAS DRAINAGE PLAN



SE Corner, N.E. 1/4, S.W. 1/4
Sec. 3, T27S, R1W
of the 6th P.M.

SE Corner, S.W. 1/4
Sec. 3, T27S, R1W
of the 6th P.M.



SCALE: 1"=100'
● = IRON SET

C.A.C. = COMPLETE ACCESS CONTROL
B.S.L. = BUILDING SETBACK LINE

BENCH MARK: CITY OF WICHITA BENCH MARK DISC, 30 FEET
NORTH AND 37 FEET EAST OF THE INTERSECTION OF THE
CENTERLINES OF HOOVER AND 21ST ST., N.
ELEV.=1327.17 CITY DATUM
ELEV.=1327.17 M.S.L.

LEGEND

- MAJOR BASIN BOUNDARY
- - - MINOR BASIN BOUNDARY
- MINOR STORM FLOW
- MAJOR STORM FLOW
- PROPOSED STORM SEWER & INLET
- PROPOSED STORM SEWER & MANHOLE
- ①A DRAINAGE BASIN IDENTIFIER
- ①O1 NODE IDENTIFIER
- T.C. TOP OF CURB ELEVATION
- H.P. HIGH POINT
- ≠ MATCH EXISTING

NOTE: ELEVATIONS BASED ON C.O.W. DATUM
M.S.L. DATUM = C.O.W. DATUM + 1187.2
COMPUTATIONS BASED ON ROLL CURB &
GUTTER, REINFORCED CONCRETE PIPE (n=0.013)
& MINIMUM WALK GRADE OF 0.3 FEET ABOVE
TOP OF CURB

MINIMUM PAD (LOWEST OPENING) ELEVATION FOR THE FOLLOWING LOTS
SHALL BE AS SHOWN BELOW:

LOTS	BLOCK	CITY DATUM	M.S.L.
1 THROUGH 28	1	137.5	1324.7
1 THROUGH 28	2	137.5	1324.7

MINIMUM LOWEST FLOOR ELEVATION FOR THE FOLLOWING LOTS SHALL BE AS
SHOWN BELOW:

LOTS	BLOCK	CITY DATUM	M.S.L.
1 THROUGH 28	1	136.3	1323.5
1 THROUGH 28	2	136.3	1323.5

