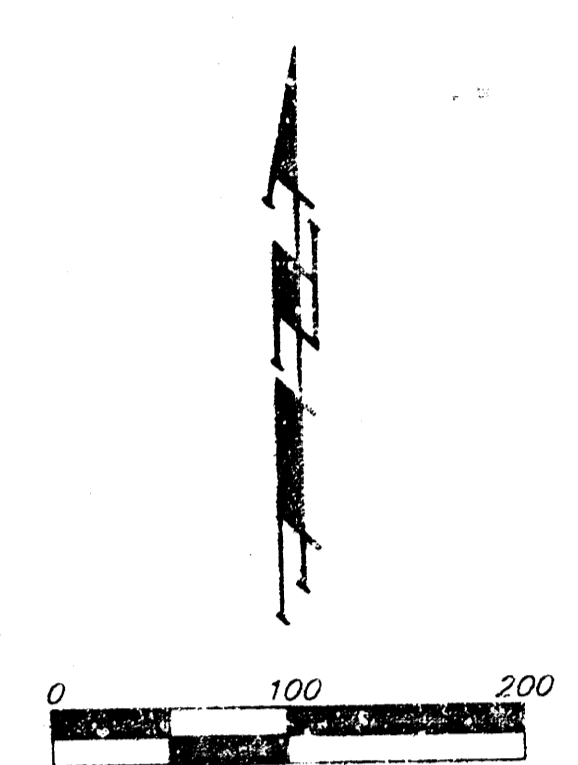


DRAINAGE PLAN HUNTERS RIDGE ADDITION WICHITA, SEDGWICK COUNTY, KANSAS

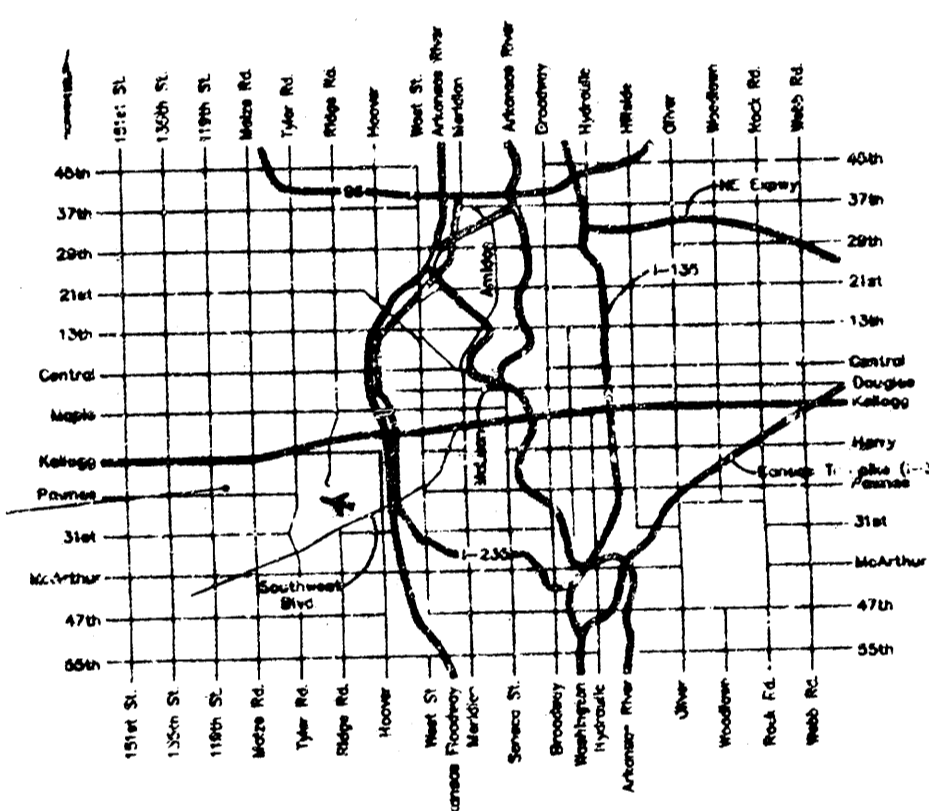


LEGEND

- CD = Cleanout
- CP = Cable TV Pedestal
- EB = Electric Box
- FH = Fire Hydrant
- Sign = Sign
- SMH = Sanitary Sewer Manhole
- T = Tree
- WV = Water Valve

--- SANITARY SEWER
--- WATER
--- GAS

Drainage Area	Area (acres)	C _s	C _m	T _c (min)	T _m (hr)	Q ₁ (cfs)	Q ₂ (cfs)	Q ₃ (cfs)
1	2.0	0.54	3.54	15	3.83	7.36	4.1	7.9
2	2.9	0.54	0.54	15	3.83	7.36	6.0	11.5
3	1.9	0.54	0.54	15	3.83	7.36	3.9	7.8
4	0.7	0.50	0.50	15	3.83	7.36	1.3	2.6
5	0.5	0.50	0.50	15	3.83	7.36	1.0	1.8
6	1.5	0.54	0.54	15	3.83	7.36	3.1	6.0
7	1.8	0.54	0.54	15	3.83	7.36	3.7	7.2
8	0.5	0.54	0.54	15	3.83	7.36	1.0	2.0
9	1.4	0.54	0.54	15	3.83	7.36	3.0	5.6
10	2.5	0.58	0.58	15	3.83	7.36	8.4	16.2
11	0.7	0.50	0.50	15	3.83	7.36	1.3	2.6
12	0.7	0.50	0.50	15	3.83	7.36	1.3	2.6
13	1.4	0.52	0.52	15	3.83	7.36	2.8	5.4



E. SEVERIN SCHMIDT
MAIL # KENNETH A. SCHMIDT
336 N FOUNTAIN
WICHITA, KS 67208
ZONED "SF-20"

JACOBS, LUCILLE E
REVOC LIV TRUST
135 N RICHMOND
WICHITA, KS 67203

OWNER:
GREYSTONE CONSTRUCTION INC.
ATTN: QUENTIN MOEDER
4729 N IRVING
WICHITA, KS 67209

BENCHMARK:
CON BENCH MARK DISC 1 1/2 MILE EAST OF 119TH ST
SOUTH SIDE OF PAWNEE 34 SOUTH OF CTR LINE
PAWNEE AND 6" WEST OF HEDGE ROW SOUTH
ELEV: 145.50

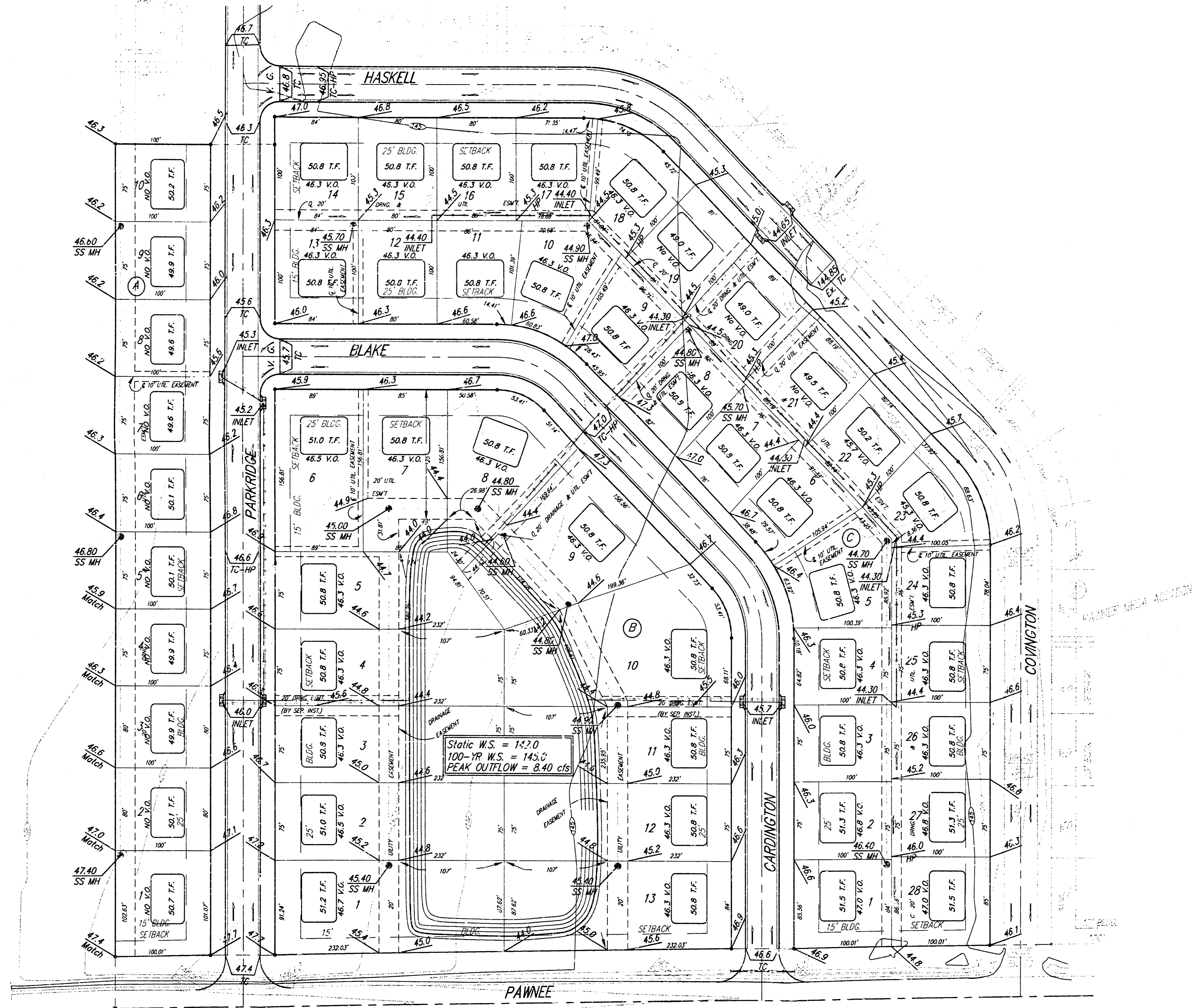
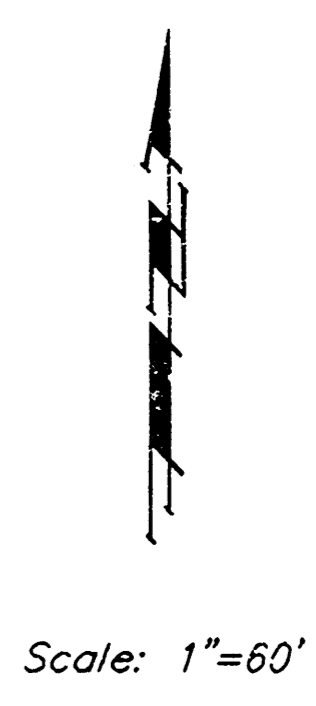
NOTE: The proposed drainage plan provided herein is a generally defined plan to follow for design. It is recognized and assumed that upon the final design of street and storm sewer improvements within this plat that the designer will modify or alter the general drainage plan as necessary in order to implement the installation of the improvements to obtain the most economical design and construction possible.

LEGAL:
A PLAT OF LOTS 1 THROUGH 28, BLOCK 9, AND LOTS 1 THROUGH 10, BLOCK 10, AND LOTS 1 THROUGH 25, BLOCK 11, TOGETHER WITH THAT PART OF PARRDRIDGE LYN. EAST OF AND ADJACENT TO LOTS 1 THROUGH 10 IN SAID BLOCK 10, AND THAT PART OF BLAKE AND CAROLINGTON LYING BETWEEN SAID BLOCKS 9 AND 11, AND ALL OF BLAKE CE LYING IN SAID BLOCK 11, ALL AS PLATTED IN PAWNEE MESA ADDITION, AN ADDITION TO SEDGWICK COUNTY, KANSAS.

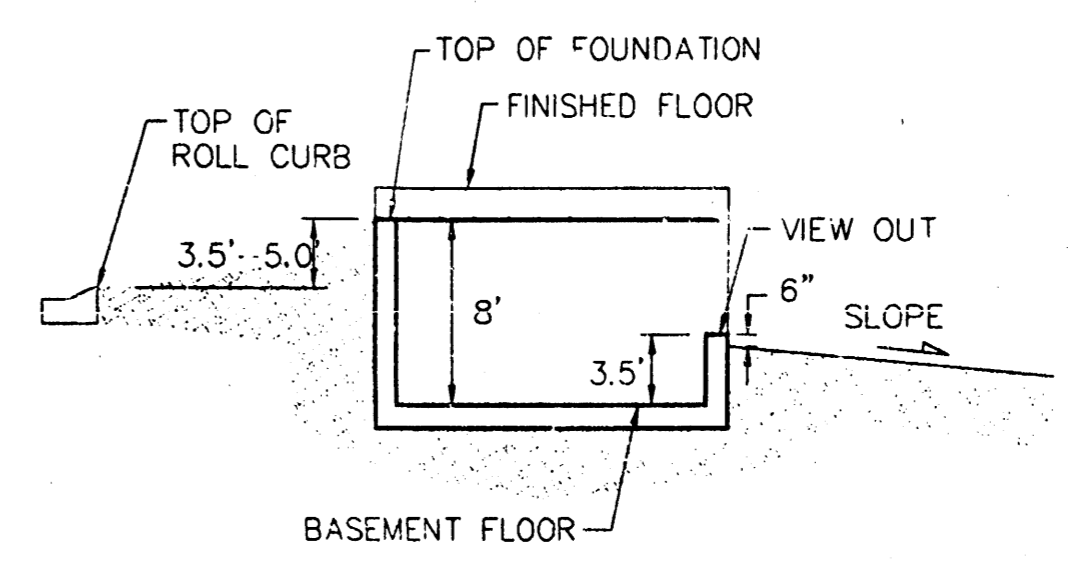
January 07, 1999

BAUGHMAN COMPANY P. A.
ENGINEERING, SURVEYING, & PLANNING
310-262-2274 • 310-262-2274 • WICHITA, KANSAS 67211

BENCHMARK:
 C.O.W. Benchmark disc 1/2 mi.
 east and 34' south of C of
 Pawnee and 119th St. W.
 (6' West of hedge row)
 Elev. = 145.50 (City Datum)



NOTE:
 Proposed top of foundation
 are shown on plans.
 Contractor to set finish floor elevation.
 All street elevations shown on plans
 are for top of curb (full height).
 View-out elevations are denoted as
 XXX V.O.



TYPICAL VIEW OUT
 NO SCALE

HUNTER'S RIDGE ADDITION
GRADING PLAN
 WICHITA, KANSAS

BAUGHMAN COMPANY P.A.
 ENGINEERING, SURVEYING, & PLANNING
 316-262-7271 • 315 ELLIS • WICHITA, KANSAS 67211

DESIGN NBW	DRAWN TMC	APPROVED	DATE 5-99	SCALE NOTED	SHEET 1 OF 1
---------------	--------------	----------	--------------	----------------	-----------------------

HUNTER'S RIDGE 99-02-E281