

DRAINAGE PLAN IVY CHRISTINE 2ND ADDITION

WICHITA, SEDGWICK COUNTY, KANSAS

The east 5 Acres of the West 15 Acres of the NW1/4 of the NE1/4 of Sec. 27, Twp. 27-S, R-1-W of the 6th P.M., Sedgwick County, Kansas, except the N1/2 thereof, and except the south 170 feet thereof.

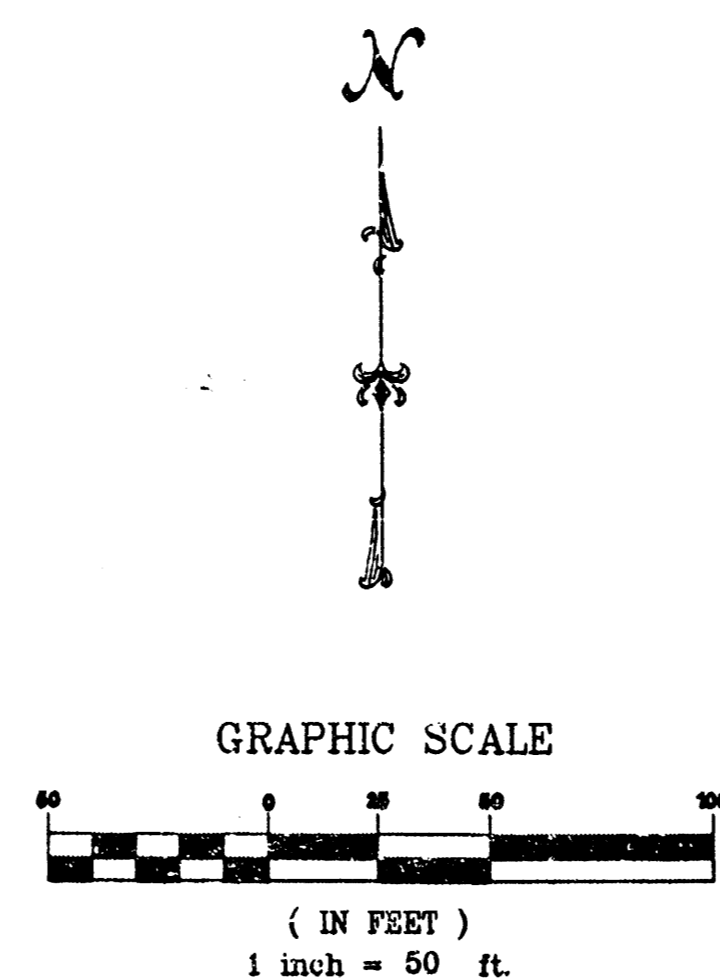
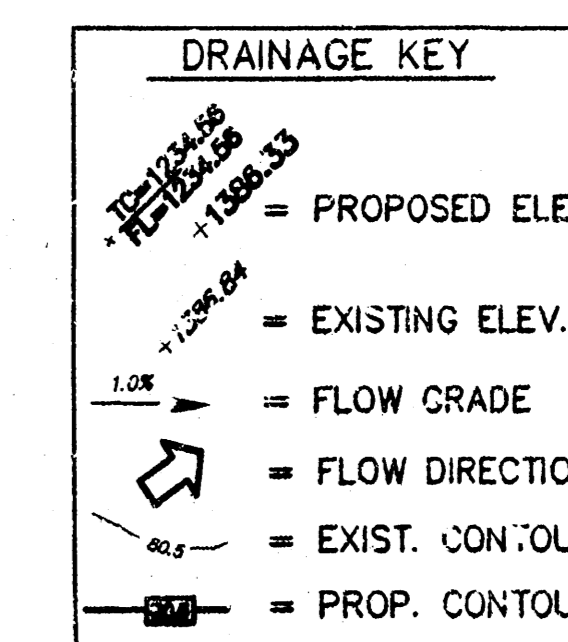
JAMES JAHANSOZ
118 S. MARS
WICHITA, KS 67209

PH 722-0608

GROSS SIZE
99,081.27 SQ. FT. ±
2.27 ACRES ±

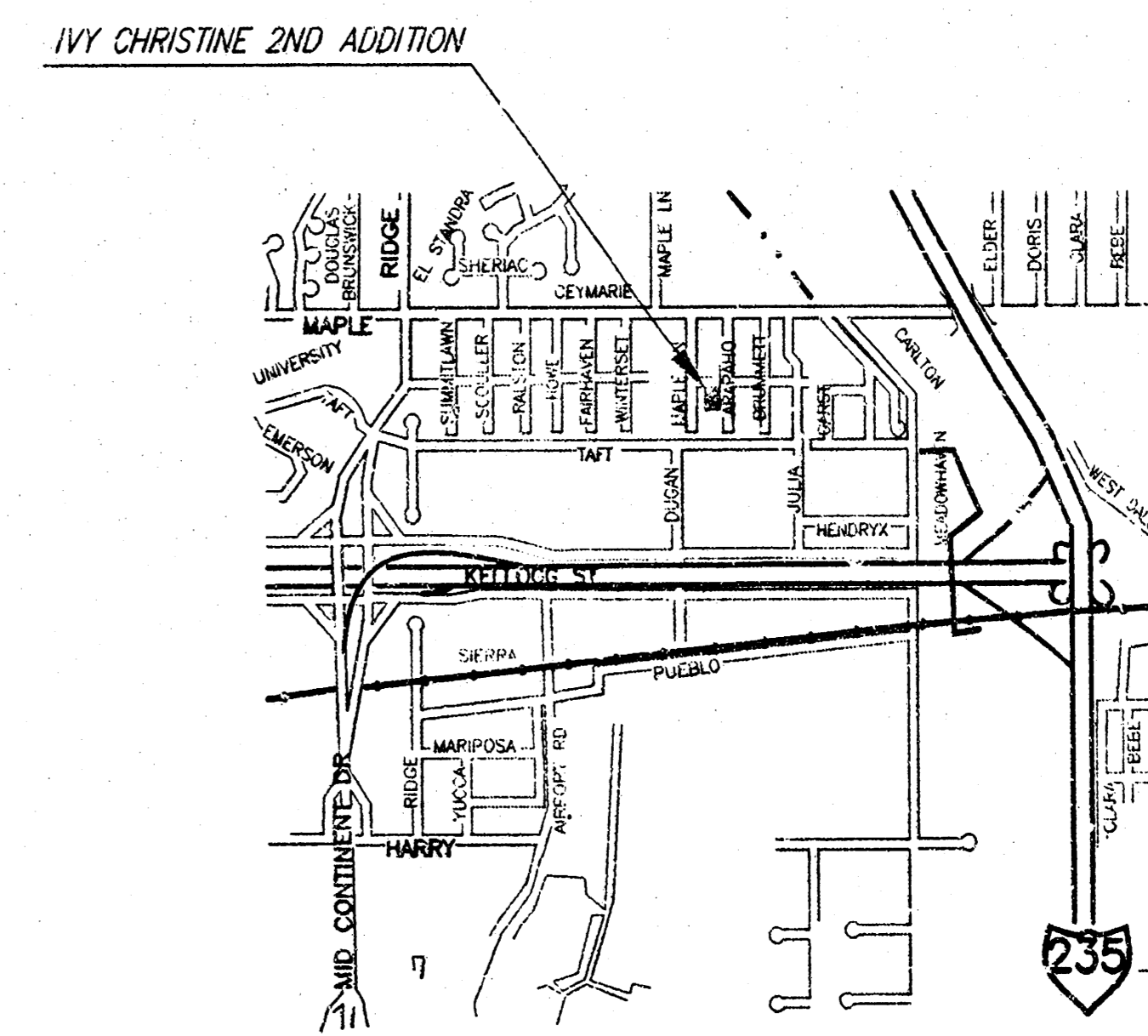
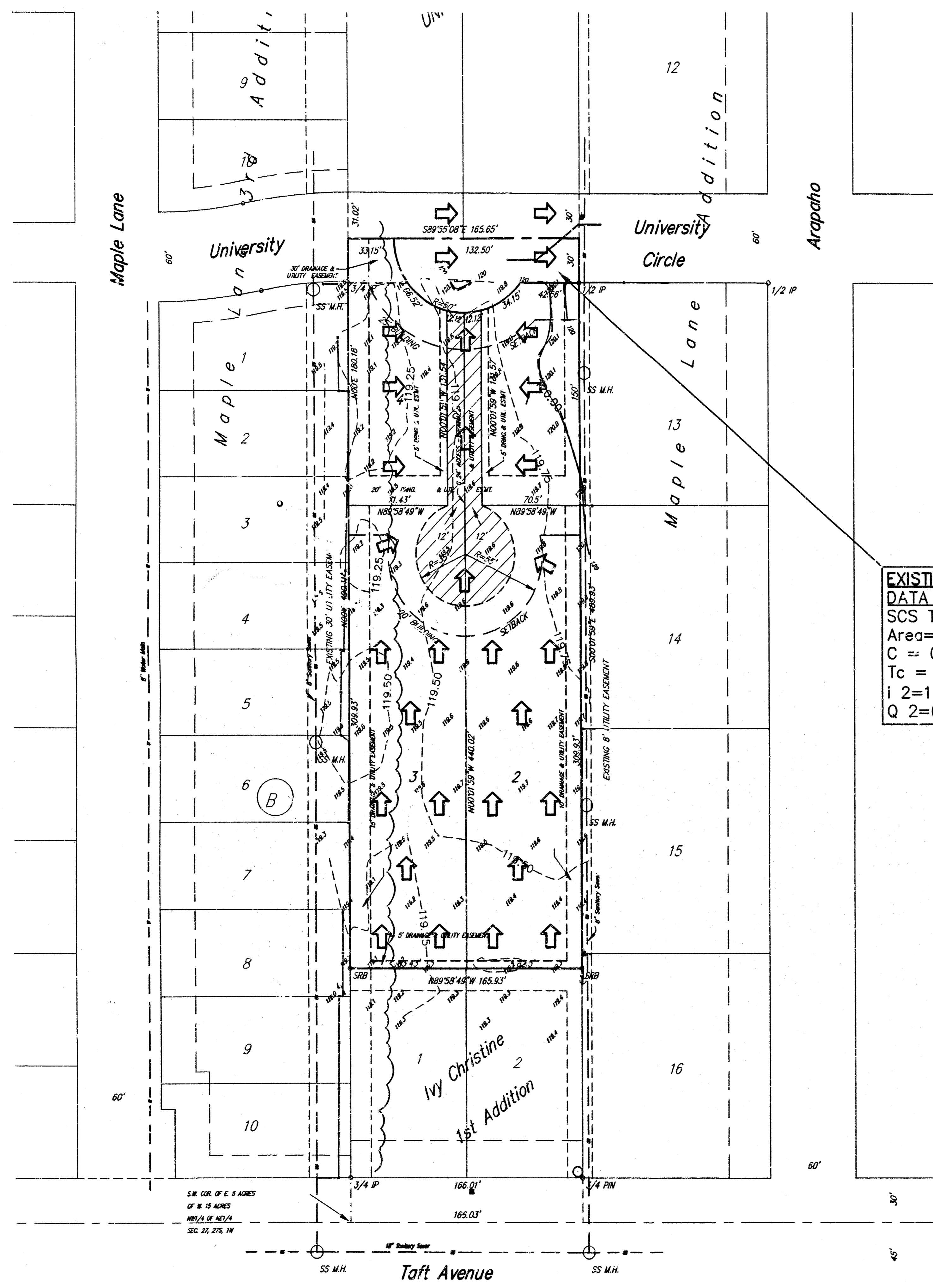
NET SIZE
80,491.28 SQ. FT. ±
1.85 ACRES ±

MINIMUM LOT SIZE
8,398.5 SQ. FT. ±

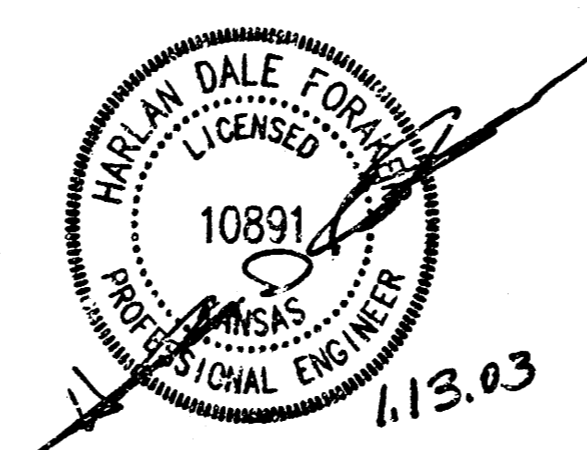


BENCH MARK:
RAILROAD SPIKE IN POWER POLE
15.8' S. OF S.W. COR. LOT 12, MAPLE LANE ADD.
ELEV. = 121.85 (CITY OF WICHITA DATUM)

EXISTING DRAINAGE DATA AREA	PROPOSED DRAINAGE DATA AREA
SCS Type B Soil	SCS Type B Soil
Area=2.27 acres	Area=2.27 acres
C = 0.16	C = 0.52
Tc = 60 min.	Tc = 41 min.
i 2=1.70"/hr.	i 2=2.18"/hr.
Q 2=0.6 cfs	Q 2=2.57 cfs



FLOOD ZONE
Subject property is in Zone B, as shown of Federal Emergency Management Agency (FEMA) Flood Insurance Rate Map (FIRM) for Wichita, Kansas, Community Panel Number 200328 0020 B, effective May 15, 1986.



DRAINAGE PLAN PREPARED BY:
CERTIFIED ENGINEERING DESIGN, P.A.

810 WEST DOUGLAS, SUITE C WICHITA, KANSAS 67203 PH: (316) 262-8808 FAX: (316) 262-1669	SHEET 1 TOTAL 1
---	--------------------

Savoy Company, P.A.
Land Surveyors
335 S. Burdette, Suite 104, Wichita, KS 67202
PH (316) 266-0999
FAX (316) 266-9279
www.savoy.com