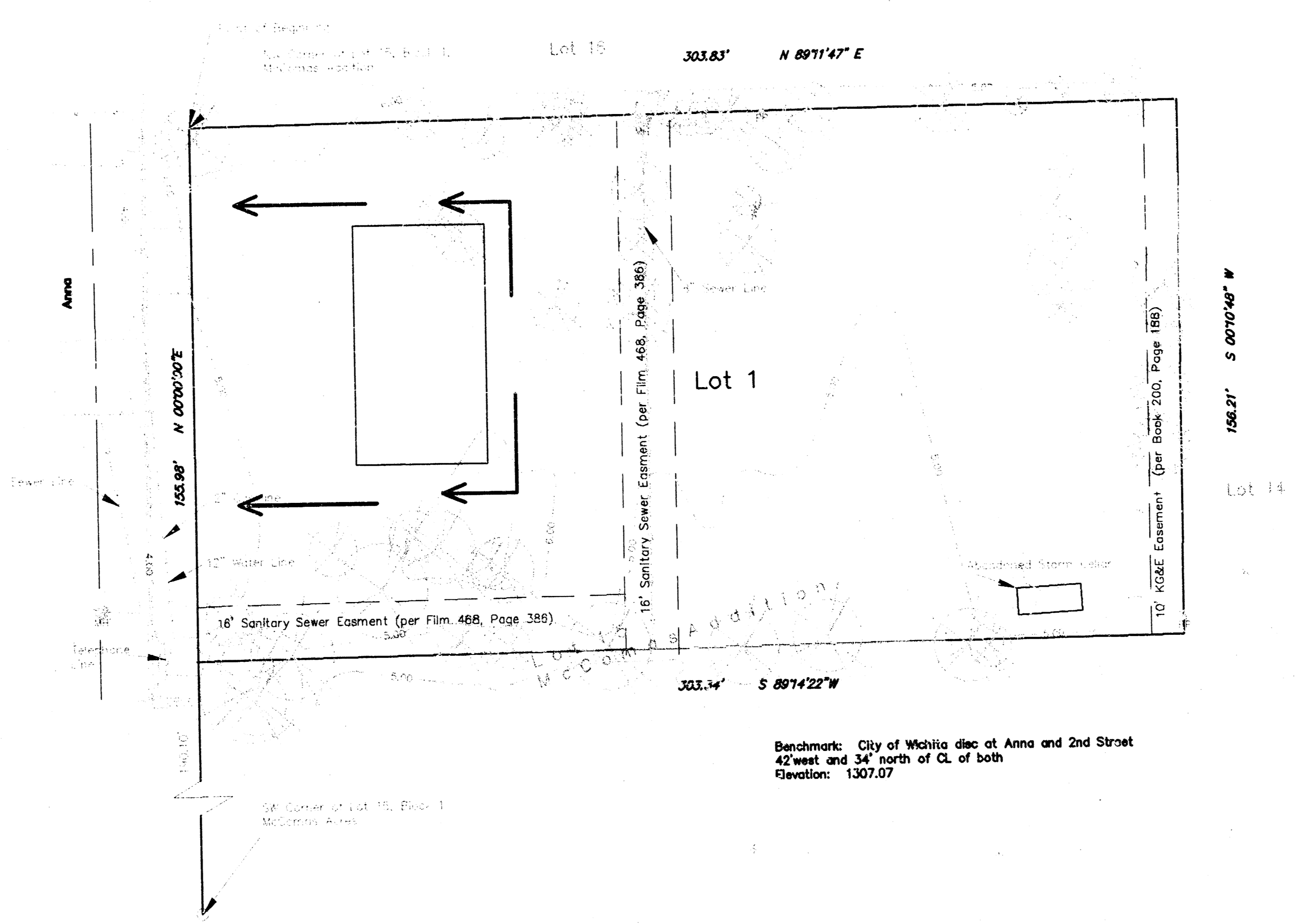
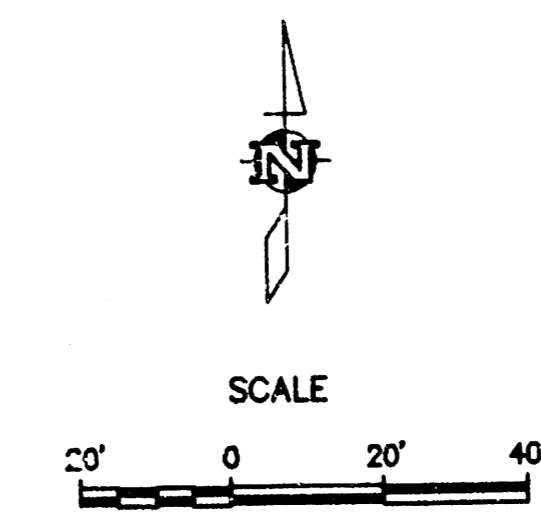


**DRAINAGE PLAN  
JAMES ADDITION  
WICHITA, SEDGWICK COUNTY, KANSAS**



Benchmark: City of Wichita disc at Anna and 2nd Street  
42 west and 34 north of CL of both  
Elevation: 1307.07

**NOTE:**  
Drainage west of the sanitary sewer line, 0.50 acres, will drain to Anna Street. The property east of the sanitary sewer line will continue to follow existing drainage patterns. Should the property east of the sanitary sewer develop, it will drain to the east with the total drainage to Anna being detained to limit the peak runoff to that not exceeding that of a 3/4 acre lot.

