

SKETCH PLAT

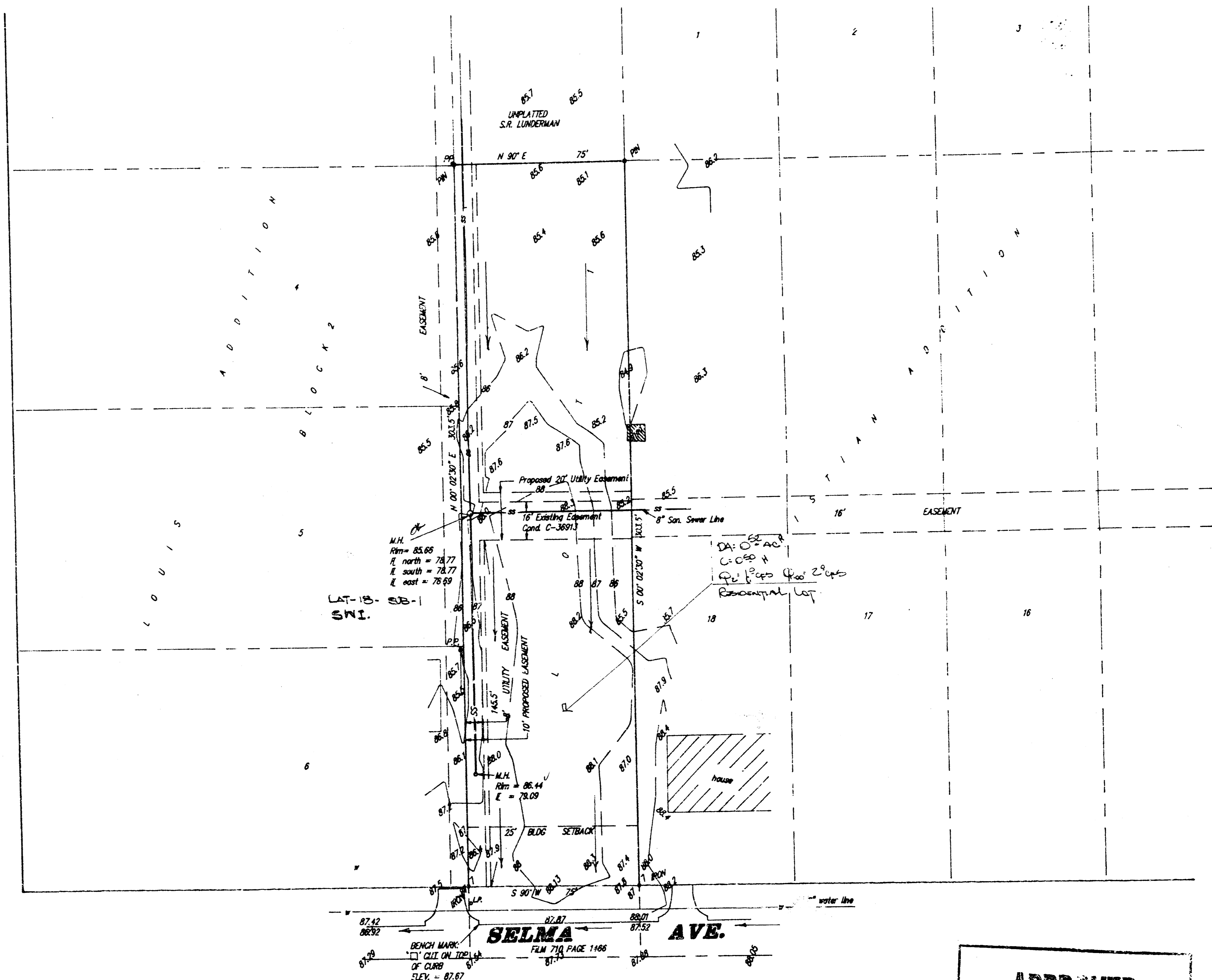
M. AND S. JONES ADDITION

A TRACT IN THE W1/2 OF THE NE1/4 OF THE NE1/4 OF SEC. 16, TWP. 28-S, R-1-E
OF THE 6TH P.M., SEDGWICK COUNTY, KANSAS

OWNER: S.R. LUNDERMAN



ELLIS AVE.



M.H.
Rim = 85.68
E north = 78.77
E south = 78.77
E west = 78.69
LAT-13
SW-1

DA: C-2-AC
C-2-25
C-2-25
R-2-25
R-2-25

BENCH MARK
CITE ON THE
OF CURB
ELEV. = 87.67

SELMA AVE.

*Not realistic
to drain all
to front.*

**APPROVED
DRAINAGE PLAN**

DRAINAGE PLAN