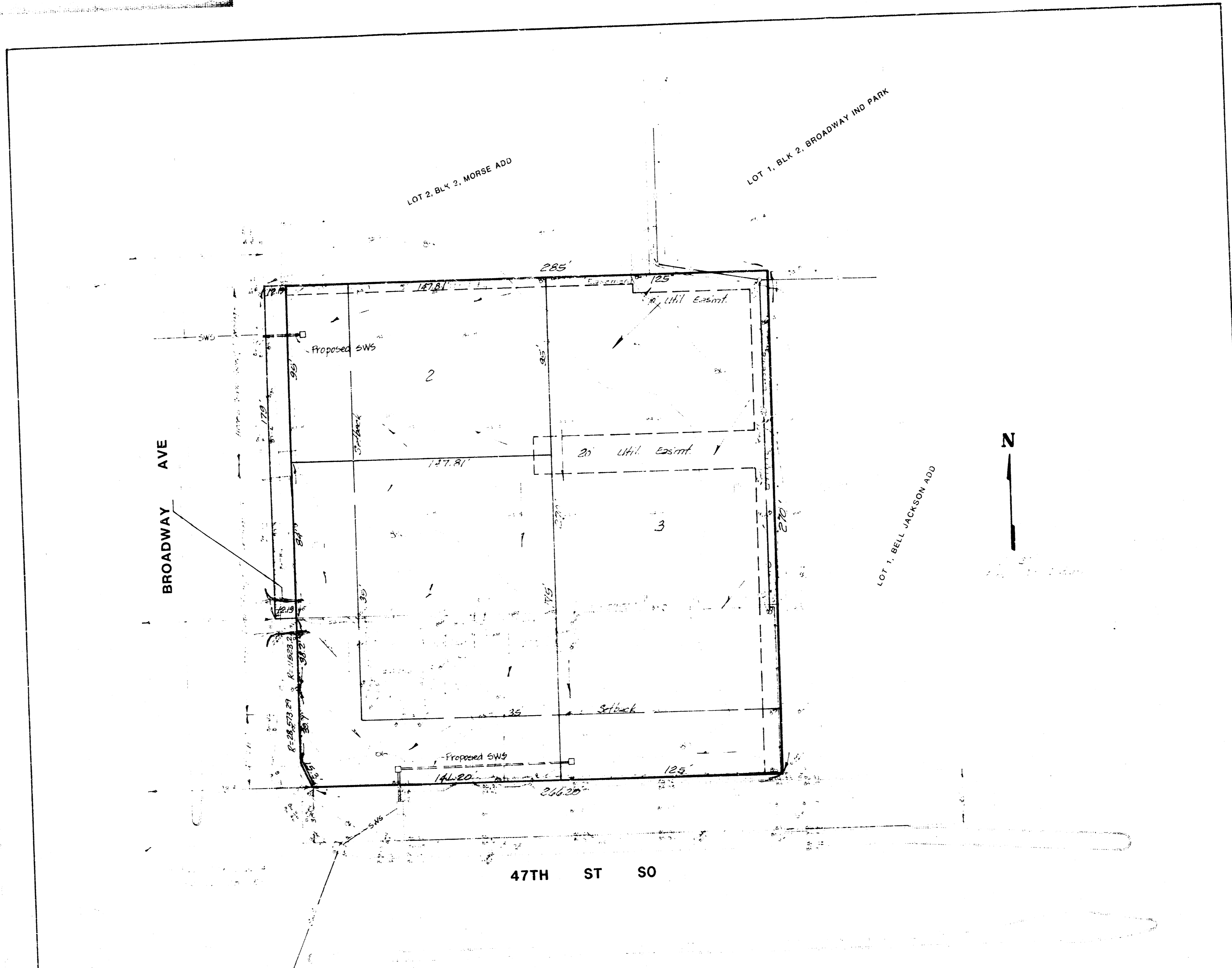


K B K'S



DRAINAGE CONCEPT
 PRELIMINARY PLAT
K. B. K.'S ADDITION

LOT 3, MORSE ADDITION AND A TRACT
 IN THE SW 1/4 OF SEC 16, 28-S, 1-E

HERB KRUMSICK

BAUGHMAN COMPANY, P.A.
 SURVEYING & ENGINEERING
 316 262-7271 • 315 FLEET • 2701 N. KANSAS ST.