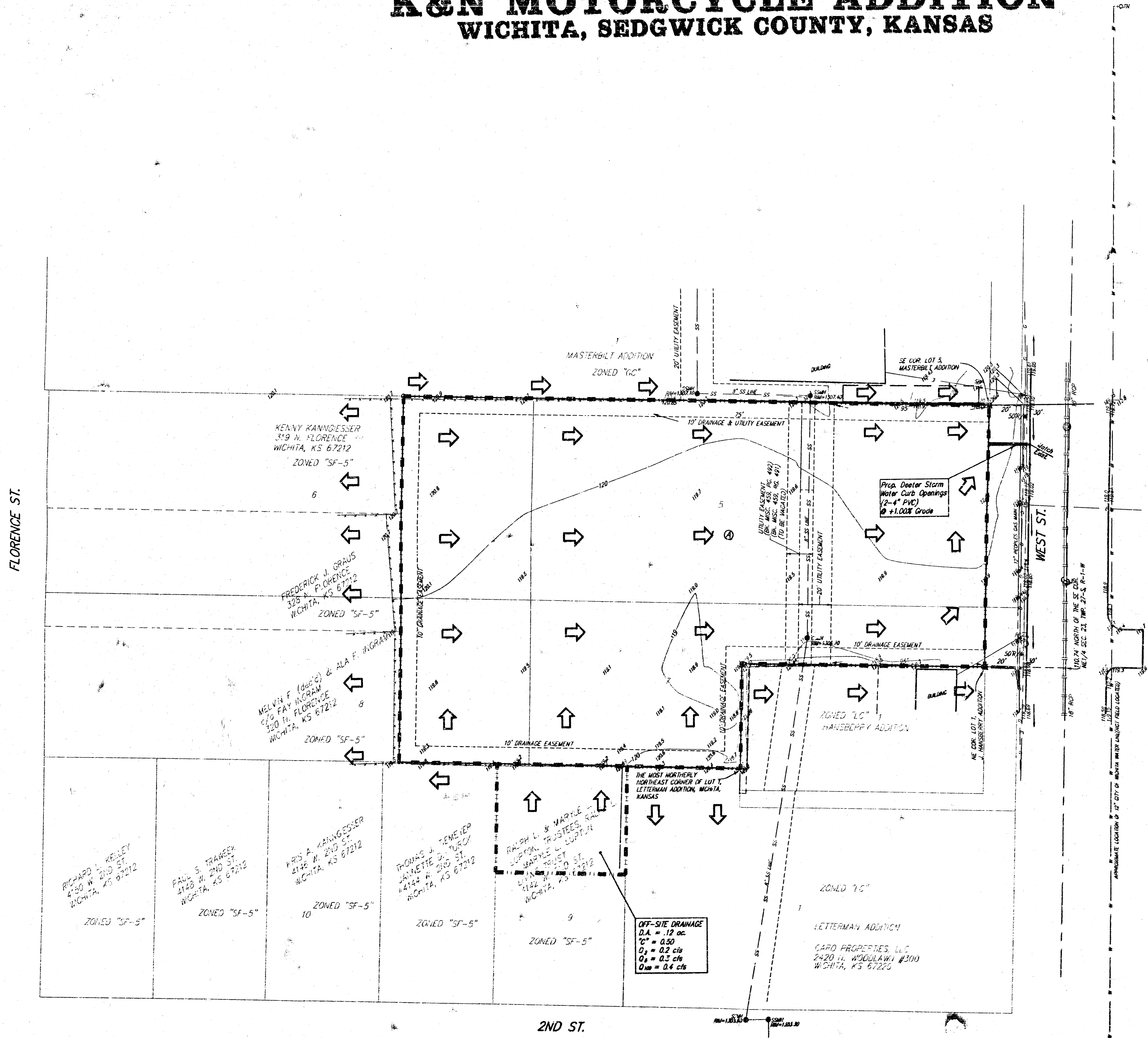


DRAINAGE PLAN

K&N MOTORCYCLE ADDITION

WICHITA, SEDGWICK COUNTY, KANSAS



0 30 60

DATE OF PREPARATION: 28 JANUARY 2002
DATE OF TOPOGRAPHY: 2 JANUARY 2002
CONTOUR INTERVALS = 1.00'

- ⊕ = #1 REBAR W/ "BAUGHMAN" CAP (FOUND)
- ⊖ = #1 REBAR W/ "BAUGHMAN" CAP (SET)
- ⊙ = #1 REBAR W/ "TILLS" CAP (FOUND)
- ⊗ = 1/2" IRON (FOUND)
- = 3/4" IRON (FOUND)
- ⊠ = "K" NAIL & SHINER IN STUMP (FOUND)

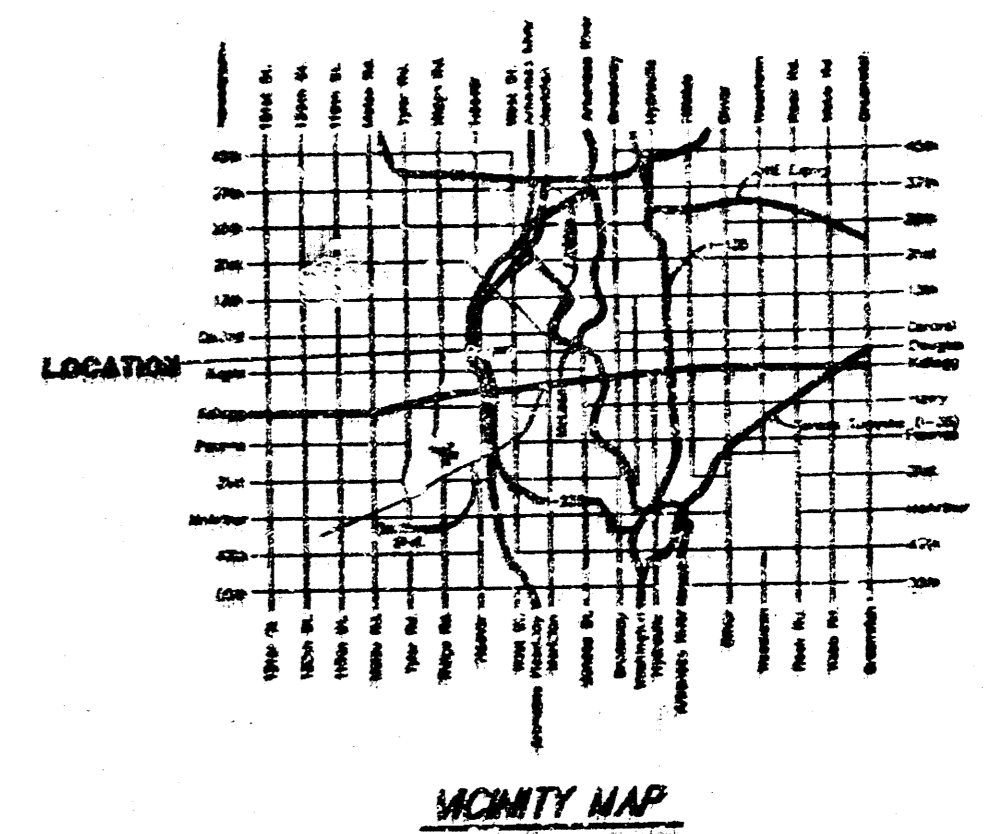
(M) = MEASURED
(D) = DESCRIBED
(P) = PLATED
(C) = CALCULATED

⊠ = Power Pole
⊠ = Sign
⊠ = Fire Hydrant
⊠ = Sanitary Sewer Manhole
⊠ = Guy Anchor

BENCHMARK:
COW BENCHMARK, SW CORNER WEST ST. & 2ND ST.
ELEV. = 118.87 CITY DATUM (1306.27 NGVD29)

- DRAINAGE NOTES:**
- The soil type per Soil Survey of Sedgwick County is Urban Land - Canadian Complex. The hydrologic classification for these soils are a B.
 - This parcel of land is located in a Federal Emergency Management Agency (FEMA) Zone B per FIRM Map 20032B 0025B, Effective Date May 15, 1986.

DRAINAGE AREA	EXISTING CONDITIONS		DEVELOPED CONDITIONS	
	1.58 acres	1.58 acres	1.58 acres	1.58 acres
Tc	15 min.	15 min.	15 min.	15 min.
i - 2 yr	3.83 in/hr	3.83 in/hr	3.83 in/hr	3.83 in/hr
i - 5 yr	4.96 in/hr	4.96 in/hr	4.96 in/hr	4.96 in/hr
i - 100 yr	7.37 in/hr	7.37 in/hr	7.37 in/hr	7.37 in/hr
Qc - 2 yr	0.52	0.52	0.52	0.52
Qc - 5 yr	0.54	0.54	0.54	0.54
Qc - 100 yr	0.63	0.63	0.63	0.63
Q2 - 2 yr	3.1 cfs	3.1 cfs	3.1 cfs	3.1 cfs
Q2 - 5 yr	3.9 cfs	3.9 cfs	3.9 cfs	3.9 cfs
Q2 - 100 yr	7.9 cfs	7.9 cfs	7.9 cfs	7.9 cfs



OFF-SITE DRAINAGE
D.A. = .12 ac
C = 0.50
Q₂ = 0.2 cfs
Q₅ = 0.2 cfs
Q₁₀₀ = 0.4 cfs