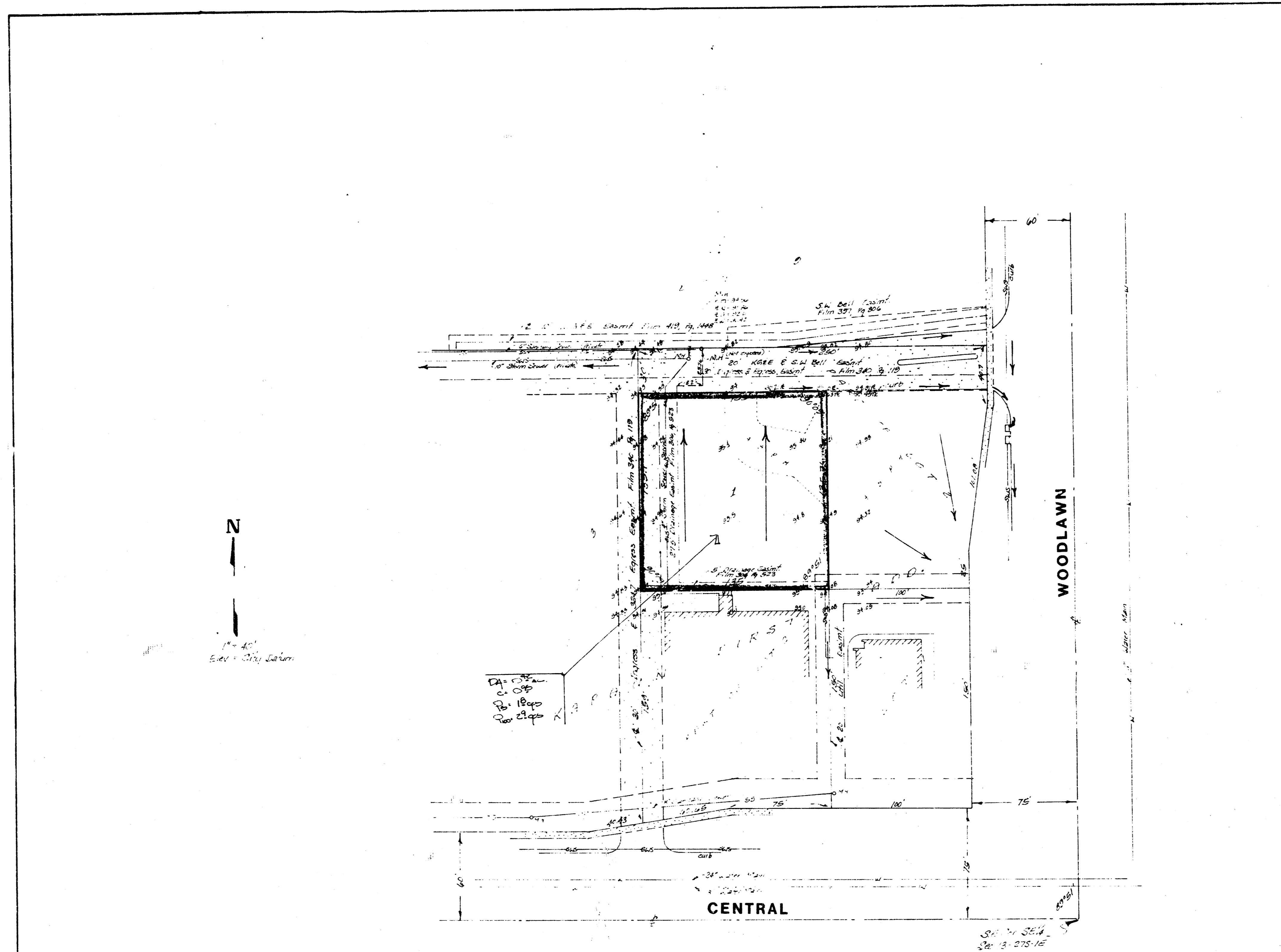


KAPAUN FIFTH ADDITION  
(DRAINAGE)



SKETCH PLAT  
**KAPAUN FIFTH ADDITION**

PART OF LOT 2, KAPAUN FIRST  
ADDITION TO WICHITA, KANSAS

CARL CHUZY

DRAINAGE NOTES

The proposed one lot plat is for commercial development. The lot will drain north to an ingress-egress easement which is of the same ownership. Runoff from the lot will discharge north into the ingress-egress easement and then either east to Woodlawn and storm sewers along Woodlawn or west and into storm sewers located some distance away from this site.

DRAINAGE PLAN

**BAUGHMAN COMPANY, P.A.**  
SURVEYING & ENGINEERING  
316262-7271 • 315 ELLIS • WICHITA, KANSAS 67211

12 Jan 1988