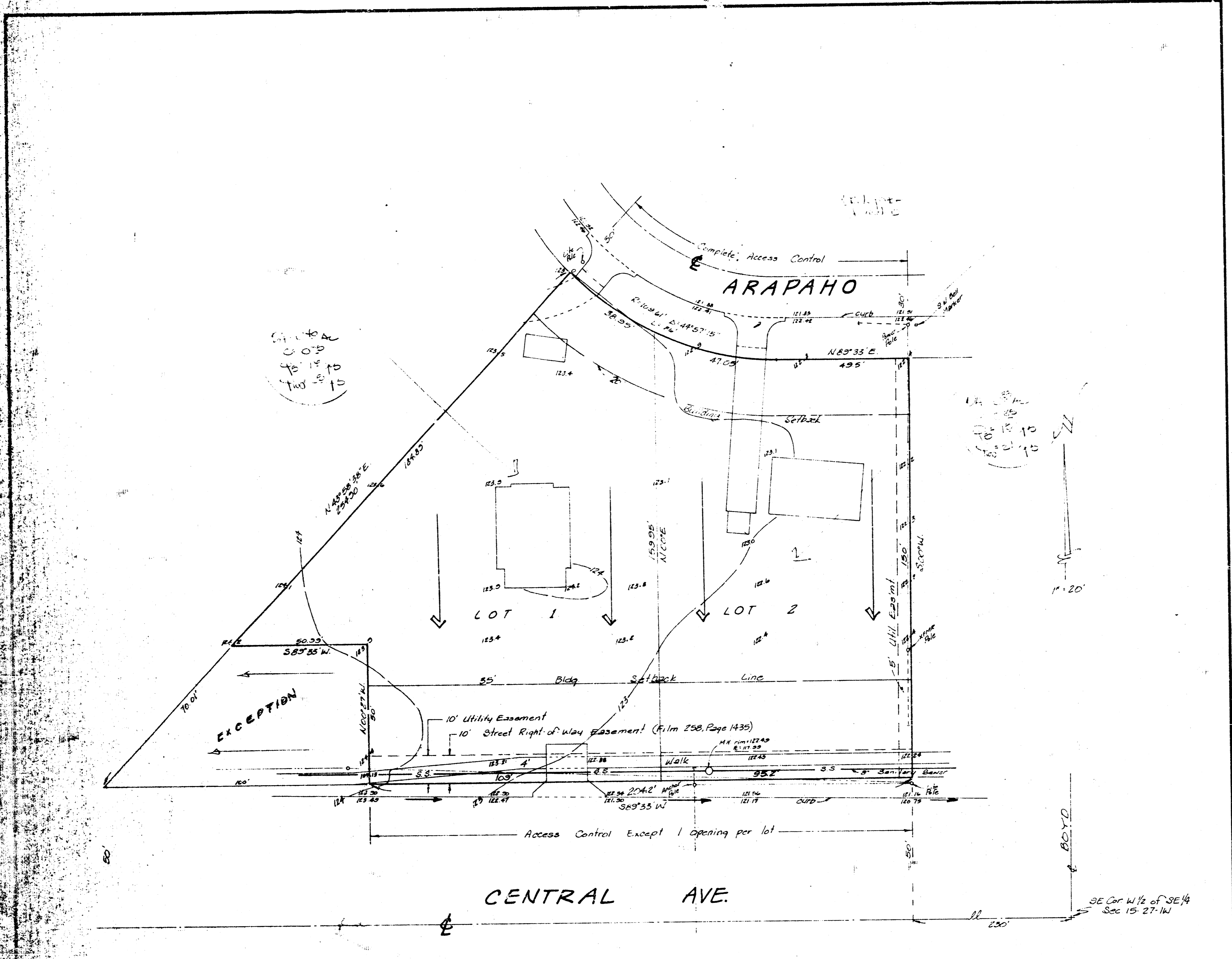


KELLEY-SHAM ADDITION
(Drainage)
(Was Kelley Addition)



SKETCH PLAT
KELLEY ADDITION

LOTS 3 AND 4, EXCEPT THE WEST 100 FEET OF THE SOUTH 50 FEET BLOCK A,
WEST CENTRAL GARDENS THIRD ADDITION

OWNER: STEPHEN R. KELLEY
STEPHEN R. SHAW

**DRAINAGE
PLAN**

The commercial lots will be redeveloped and graded to
sufficiently to Central Ave. which is paved with storm sewer
to be located near the Big Ditch. Central Ave. drain east as
shown. Discharge to the street from the developed lots
to be through driveway's or ditches.

RECEIVED
NOV 25 1986
DESIGN DIVISION

BAUGHMAN COMPANY, P.A.
SURVEYING & ENGINEERING
314-266-7271 • 315 ELLIS • WICHITA, KANSAS 67211

Nov 20 1986