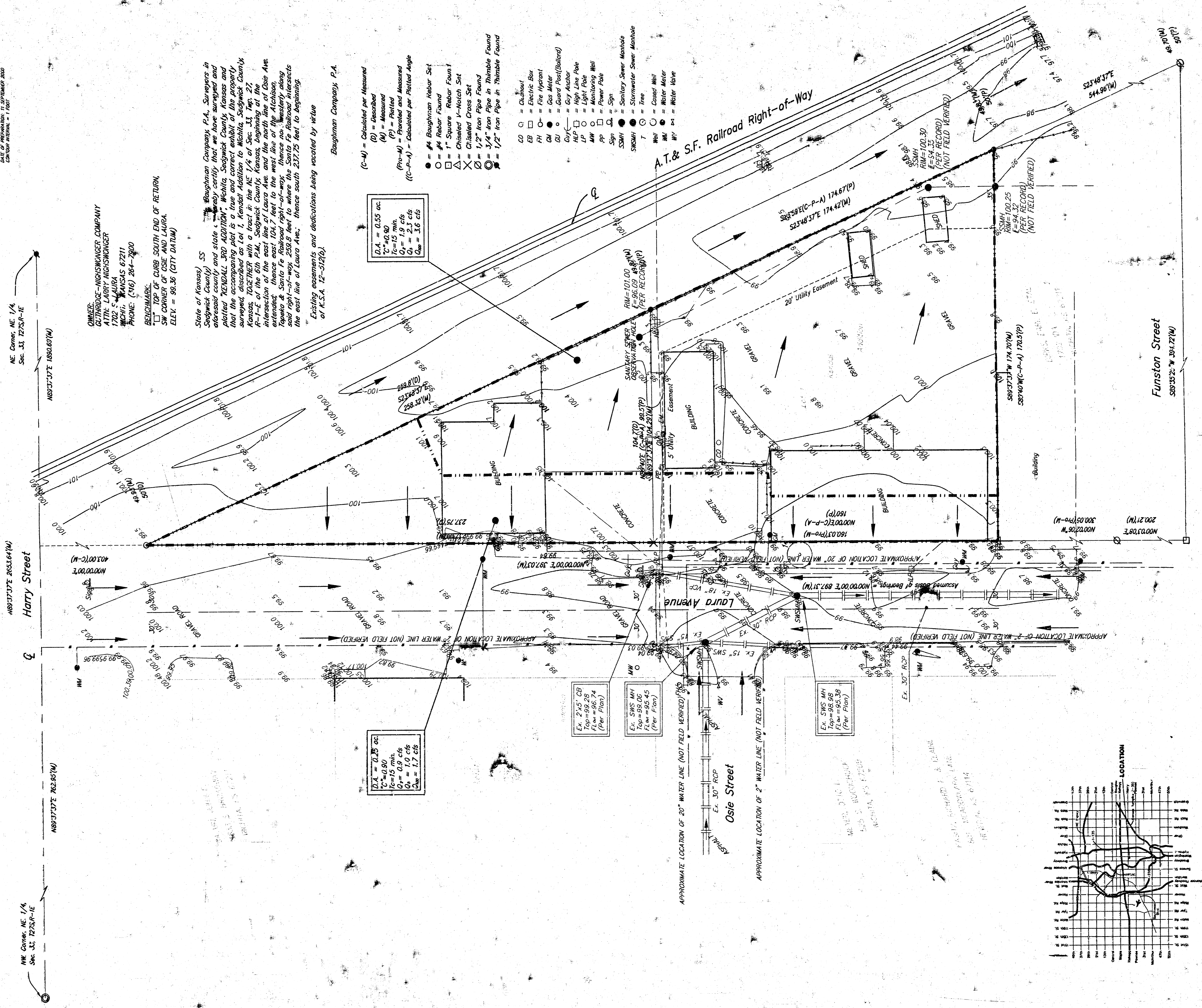
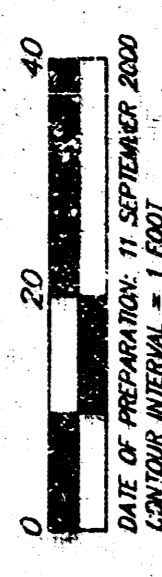


DRAINAGE PLAN

KENDALL 3RD ADDITION

WICHITA, SEDGWICK COUNTY, KANSAS



OWNER:
 CUTHRIDGE-HIGSHWAGER COMPANY
 ATTN: LARRY HIGSHWAGER
 1702 S. LAURA
 WICHITA, KANSAS 67211
 PHONE: (316) 264-2800

RECORDING:
 CLERK, CLERK SOUTH END OF RETURN,
 SW CORNER OF OSIE AND LAURA,
 ELEV. = 98.36 (CITY DATUM)

State of Kansas) SS
 Sedgwick County) Surveyors in
 and state of Kansas) and state of
 platted "KENDALL 3RD ADDITION",
 that the accompanying plat is a true
 surveyed, described as lot 1, Kendall
 Kansas, 102.7167' with a tract in the
 N 1/4 of the NE 1/4 of Sec. 33, T27N,
 R17E of the 1st P.M., Sedgwick County,
 Kansas, and the east line of the
 extension, thence east 104.7 feet to
 Tapewa & Santa Fe Railroad right-of-
 said right-of-way, 259.8 feet to where
 the east line of Laura Ave., thence
 south 237.75 feet to beginning.

Existing assessments and dedications being vacated by writ
 or K.S.A. 12-312(a).

BAUGHMAN COMPANY, P.A.
 1000 W. 10TH ST., SUITE 100
 WICHITA, KANSAS 67202
 PHONE: (316) 264-2800

- BAUGHMAN COMPANY, P.A.
- (C-M) = Calculated per Measured
 - (D) = Described
 - (M) = Measured
 - (P) = Platting
 - (Pro-M) = Proved and Measured
 - ((C-P-A)) = Calculated per Platting Angle
- = 4" Baughman Rebar Set
 - = 4" Rebar Found
 - = 1" Square Rebar Found
 - △ = Chiseled V-Notch Set
 - × = Chiseled Cross Set
 - = 1/2" Iron Pipe Found
 - = 3/4" Iron Pipe in Thimble Found
 - = 1/2" Iron Pipe in Thimble Found

D.A. = 0.28 cfs
 V = 15 min
 Q₁ = 1.0 cfs
 Q₂ = 1.7 cfs

Ex. 24" CB
 Top = 99.29
 Flow = 96.74
 (Per Plan)

Ex. SMS MH
 Top = 99.06
 Flow = 95.45
 (Per Plan)

Ex. SMS MH
 Top = 98.96
 Flow = 95.86
 (Per Plan)

